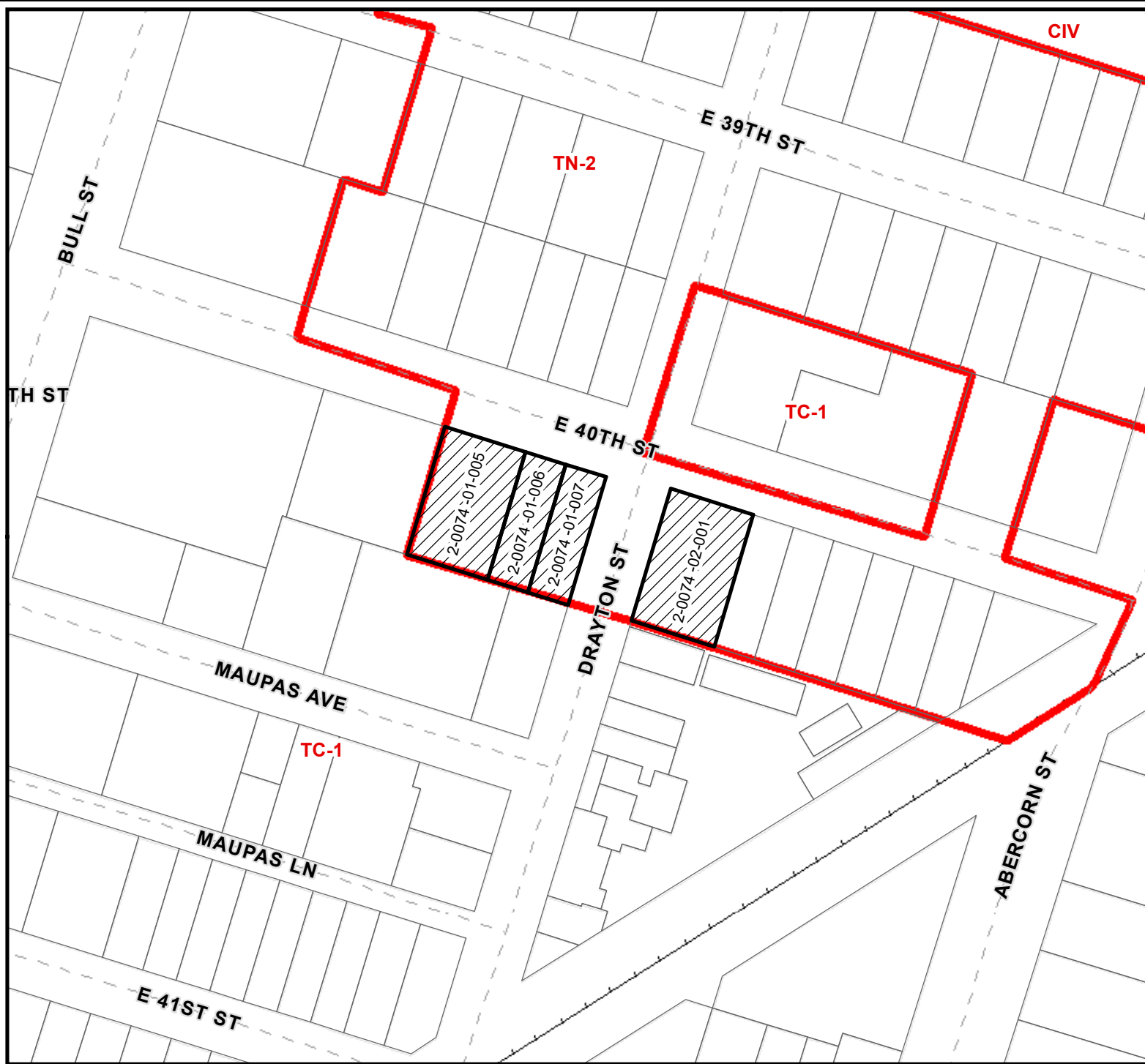


ZONING MAP

FILE # 18-005938-ZA
Aldermanic District: 2 (Durrence)
Commission District: 2 (Holmes)
Neighborhood: Thomas Square Area
PIN(s): See Map

Current property zoning(s)
TN-2
Proposed property zoning:
TC-1



THIS MAP IS A COMPILATION OF INFORMATION FROM VARIOUS SOURCES AND SCALES. IN MOST CASES THE INFORMATION HAS NOT BEEN FIELD VERIFIED. USE THIS MAP FOR GENERAL PLANNING PURPOSES ONLY.



1 inch = 100 feet

D

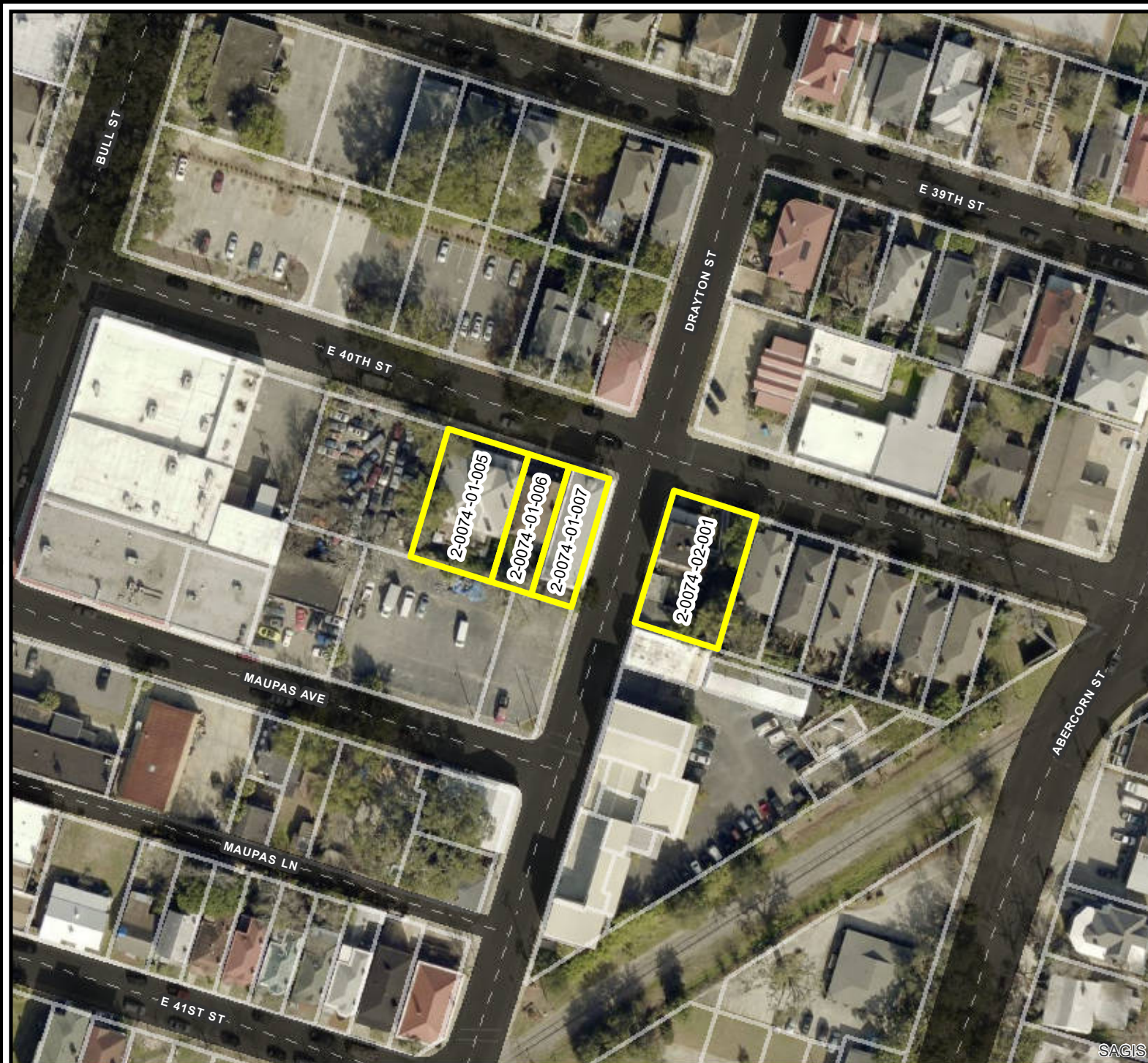


10/29/2018

CHATHAM COUNTY · SAVANNAH
METROPOLITAN PLANNING COMMISSION
110 E. STATE ST. SAVANNAH, GA 31412-8246 PHONE 912-651-1440

AERIAL MAP

FILE # 18-005938-ZA
Aldermanic District: 2 (Durrence)
Commission District: 2 (Holmes)
Neighborhood: Thomas
Square Area
PIN(s): See Map



THIS MAP IS A COMPILATION OF INFORMATION FROM VARIOUS SOURCES AND SCALES. IN MOST CASES THE INFORMATION HAS NOT BEEN FIELD VERIFIED. USE THIS MAP FOR GENERAL PLANNING PURPOSES ONLY.



1 inch = 100 feet

D



10/29/2018

CHATHAM COUNTY · SAVANNAH
METROPOLITAN PLANNING COMMISSION
110 E. STATE ST. SAVANNAH, GA 31412-8246 PHONE 912-651-1440