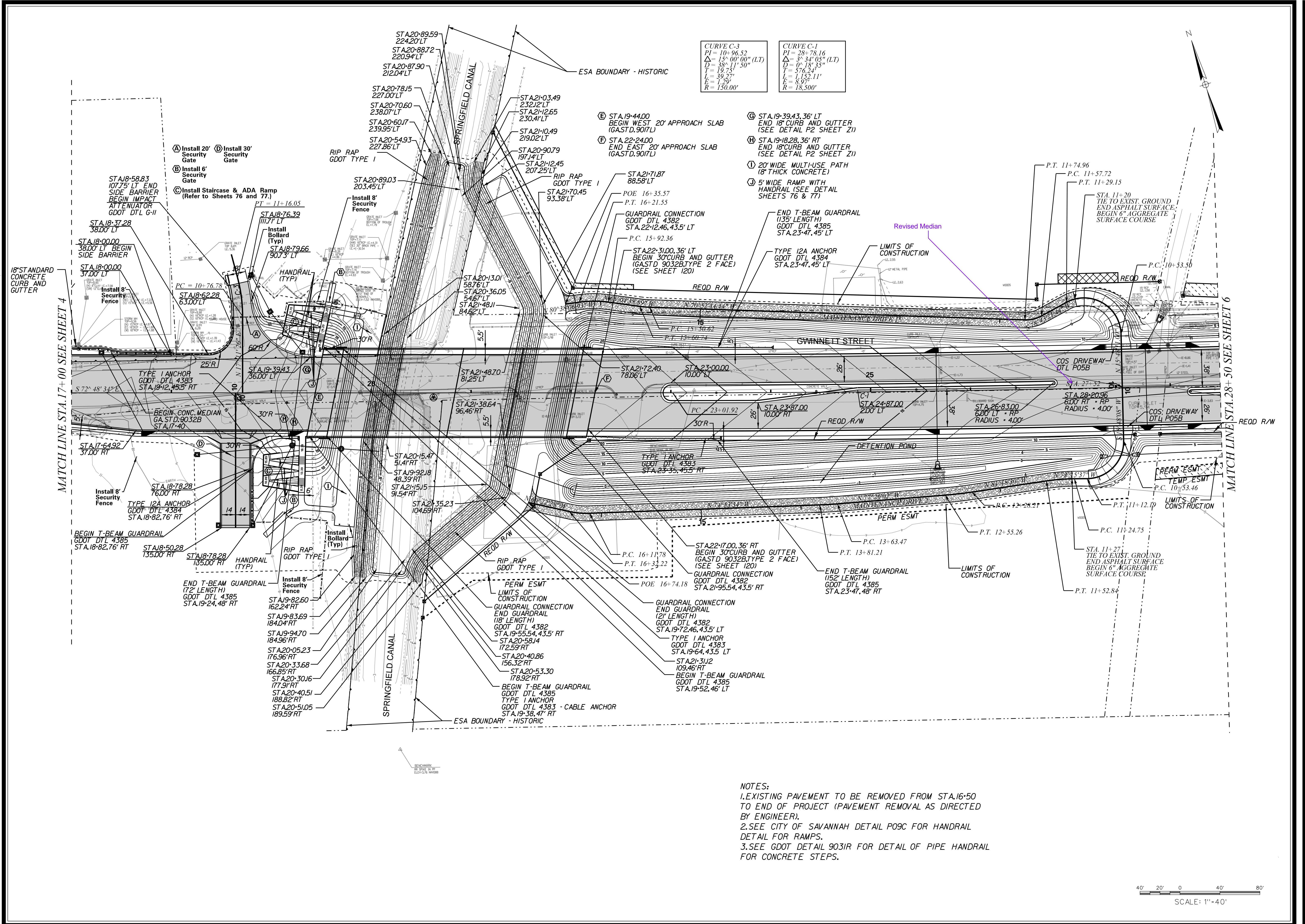


COPYRIGHT © 2016 ALL RIGHTS RESERVED. DRAWINGS MAY NOT BE REPRODUCED IN ANY FORM WITHOUT WRITTEN PERMISSION.



CURVE C-3 $PI = 10+96.52$ $\Delta = 15^{\circ}00'00'' (LT)$ $D = 38^{\circ}11'50''$ $T = 19.75'$ $L = 39.27'$ $E = 1.79'$ $R = 150.00'$	CURVE C-1 $PI = 28+78.16$ $\Delta = 3^{\circ}34'03'' (LT)$ $D = 0^{\circ}18'33''$ $T = 576.24'$ $L = 1,152.11'$ $E = 8.97'$ $R = 18,500'$
---	---

NOTES:
 1. EXISTING PAVEMENT TO BE REMOVED FROM STA.16+50 TO END OF PROJECT (PAVEMENT REMOVAL AS DIRECTED BY ENGINEER).
 2. SEE CITY OF SAVANNAH DETAIL P09C FOR HANDRAIL DETAIL FOR RAMPS.
 3. SEE GDOT DETAIL 9031R FOR DETAIL OF PIPE HANDRAIL FOR CONCRETE STEPS.



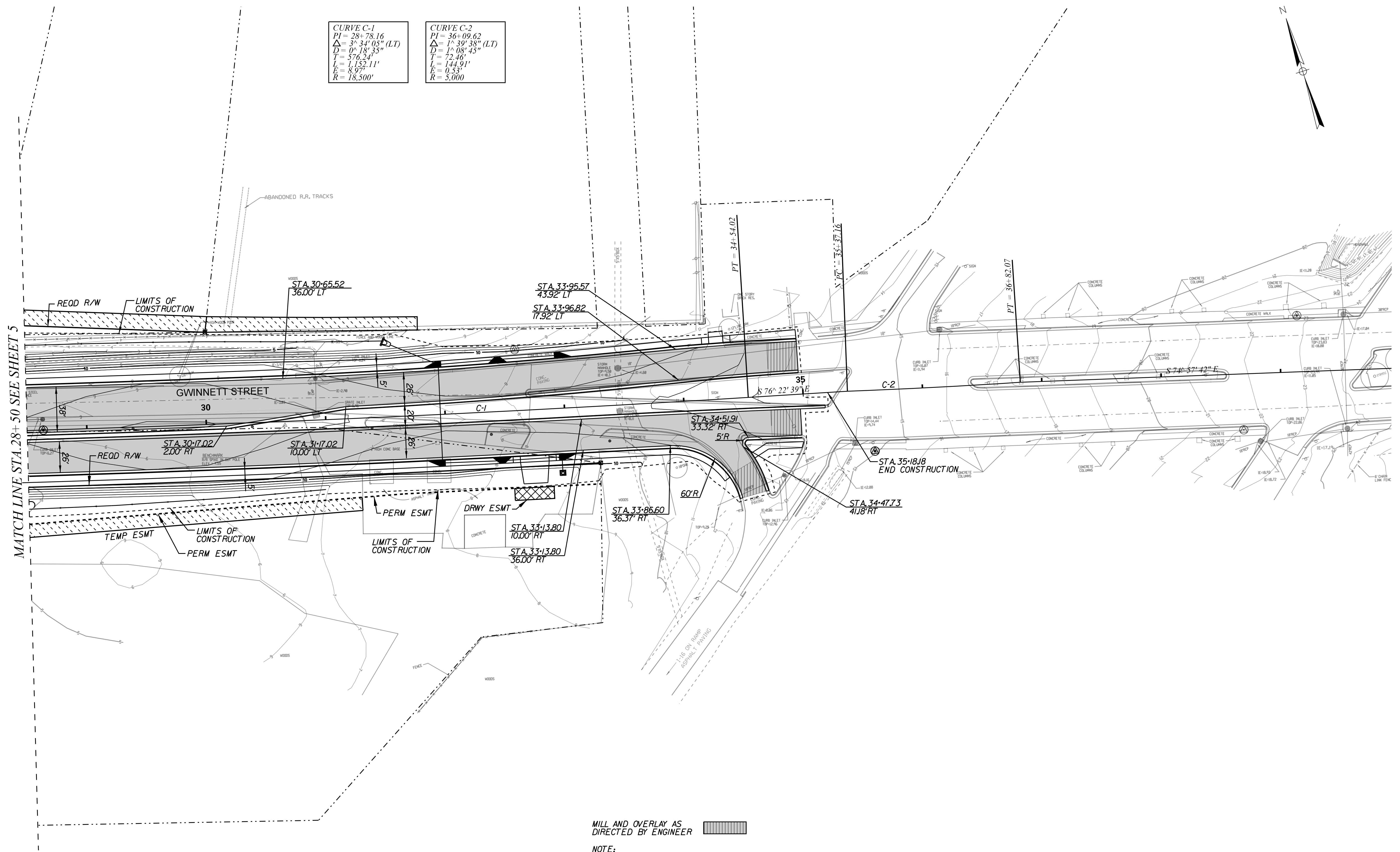
HUSSEY GAY BELL
Established 1958
 329 COMMERCIAL DRIVE, SAVANNAH, GA 31406 / T: 912.354.4626

REVISIONS:
 REVISED REQUIRED R/W ON RT 2-7-2018
 REVISED, MEDIAN OPENING STA. 27+52
 8-1-2019

DESIGNED JKN	DRAWN LDM	CHECKED CVP
DATE: JAN 2018		
JOB NO. 104251600		
SCALE: 1"=40'		

WEST GWINNETT STREET RECONSTRUCTION
 FOR
 CITY OF SAVANNAH
 ROADWAY CONSTRUCTION PLAN

DRAWING NUMBER
5

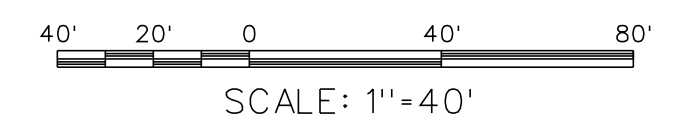


CURVE C-1	CURVE C-2
PI = 28+78.16	PI = 36+09.62
Δ = 3° 34' 03" (LT)	Δ = 1° 39' 38" (LT)
D = 0° 18' 35"	D = 1° 08' 45"
T = 576.24'	T = 72.46'
L = 1,152.11'	L = 144.91'
E = 8.97'	E = 0.53'
R = 18,500'	R = 5,000'

MATCH LINE STA. 28+50 SEE SHEET 5

MILL AND OVERLAY AS DIRECTED BY ENGINEER

NOTE:
EXISTING PAVEMENT TO BE REMOVED FROM STA. 16+50 TO END OF PROJECT (PAVEMENT REMOVAL AS DIRECTED BY ENGINEER).



HUSSEY GAY BELL
Established 1958
329 COMMERCIAL DRIVE, SAVANNAH, GA 31406 / T: 912.354.4626

REVISIONS:

DESIGNED	DESIGNED	DESIGNED
JKN	LDM	CVP
DATE: JAN 2018		
JOB NO. 104251600		
SCALE: 1"=40'		

DESIGNED	DESIGNED	DESIGNED
JKN	LDM	CVP
DATE: JAN 2018		
JOB NO. 104251600		
SCALE: 1"=40'		

WEST GWINNETT STREET RECONSTRUCTION
FOR
CITY OF SAVANNAH
ROADWAY CONSTRUCTION PLAN

DRAWING NUMBER

6