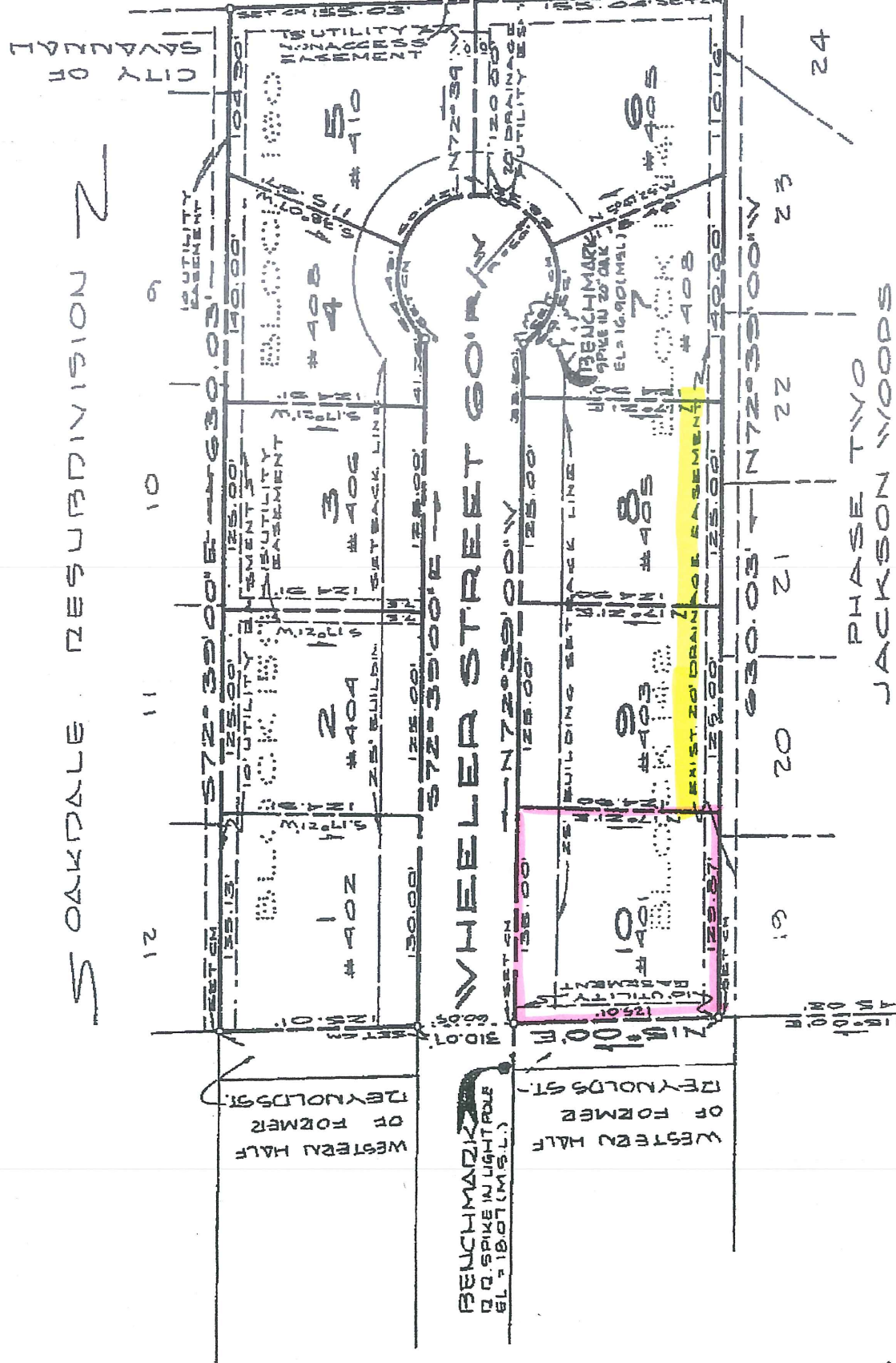


ANDOVER DRIVE 100' R/W
 (FORMERLY ATLANTIC AVENUE)
 NOT OPEN
 S15°00'00"N 310.07'



S OAKDALE RESUBDIVISION 2

PHASE TWO JACKSON WOODS

JACKSON BLVD. 60' R/W

5' DE
 172°33'00"E 572'-33'-00" E
 65'-35'-00" EXIST. CM
 0'-0"-0" EXIST. CM