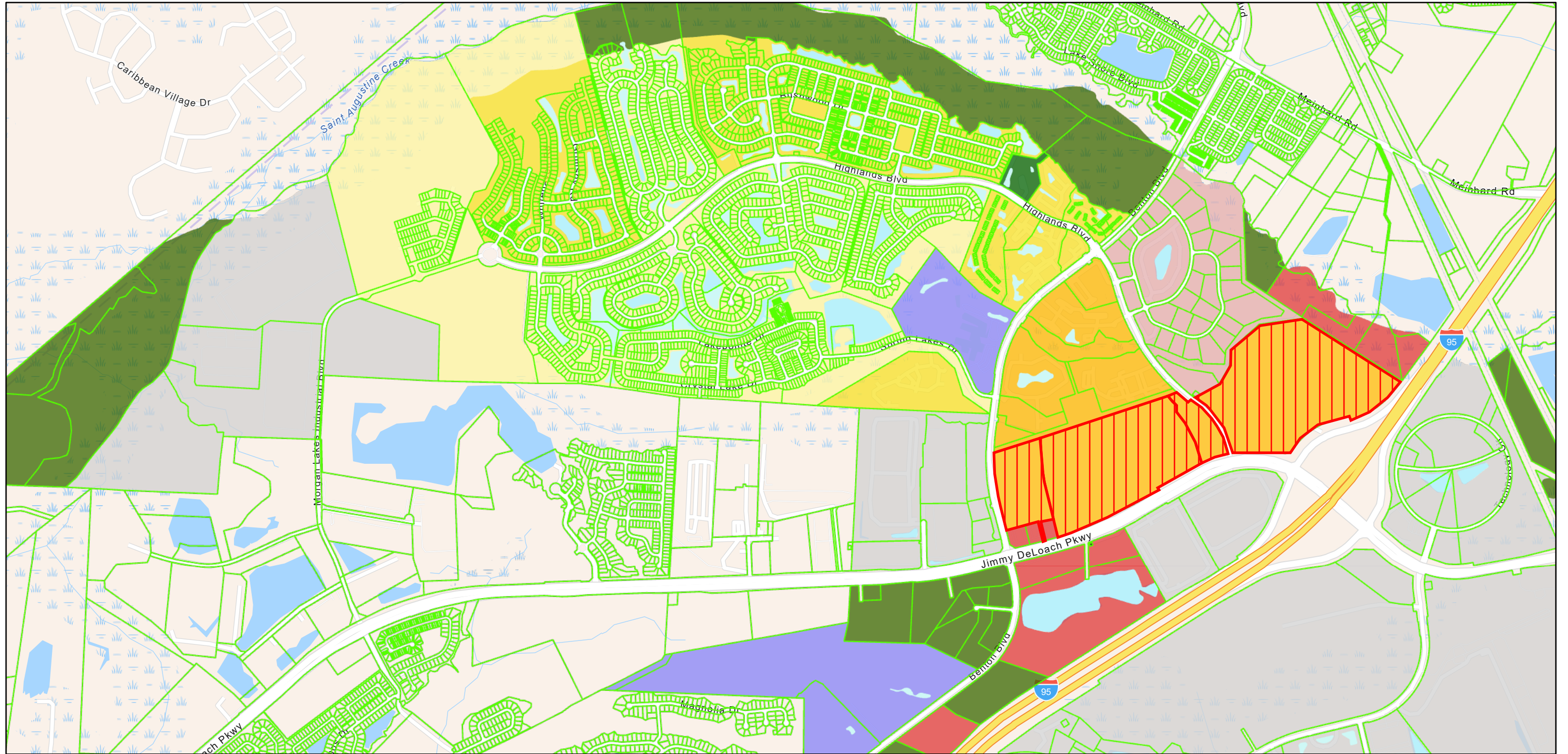


SAGIS Map Viewer



11/12/2024, 12:15:32 PM

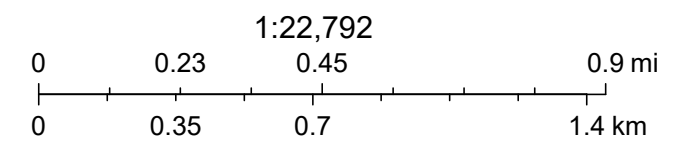
Future Landuse

- Commercial- Neighborhood
- Commercial- Suburban
- Commercial- Regional
- Residential- Suburban Single Family

- Residential- Single Family
- Residential- General
- Industry- Light
- Civic/Institutional
- Transportation/Communication/Utilit

- Parks/Recreation
- Conservation
- Open Water
- Historic Zoning (Prior to Sept 1, 2019)
- Property Boundaries (Parcels)

- Planned Development
- FLUM amendment areas



Savannah Area GIS, Esri, TomTom, Garmin, SafeGraph, GeoTechnologies, Inc, METI/NASA, USGS, EPA, NPS, US Census Bureau, USDA, USFWS, SAGIS, Chatham County Board of Assessors, SAGIS