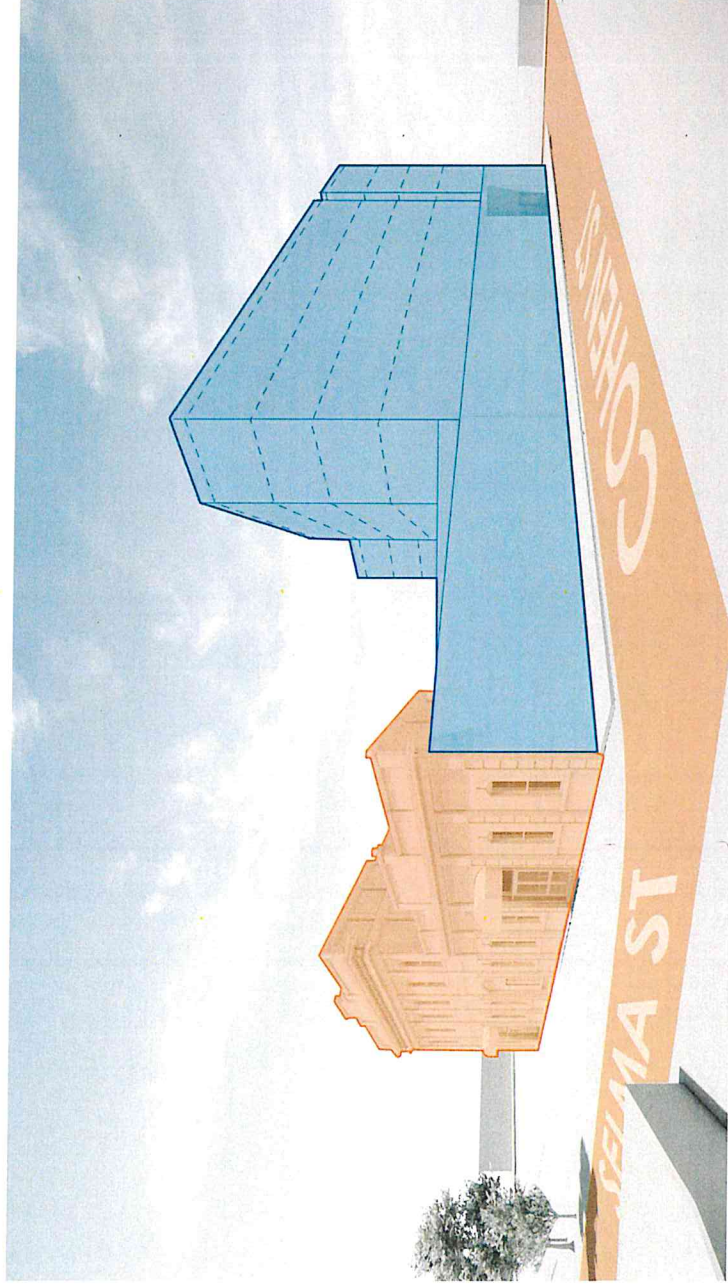


SAVANNAH STATION HOTEL

601 COHEN STREET, SAVANNAH GA, 31401

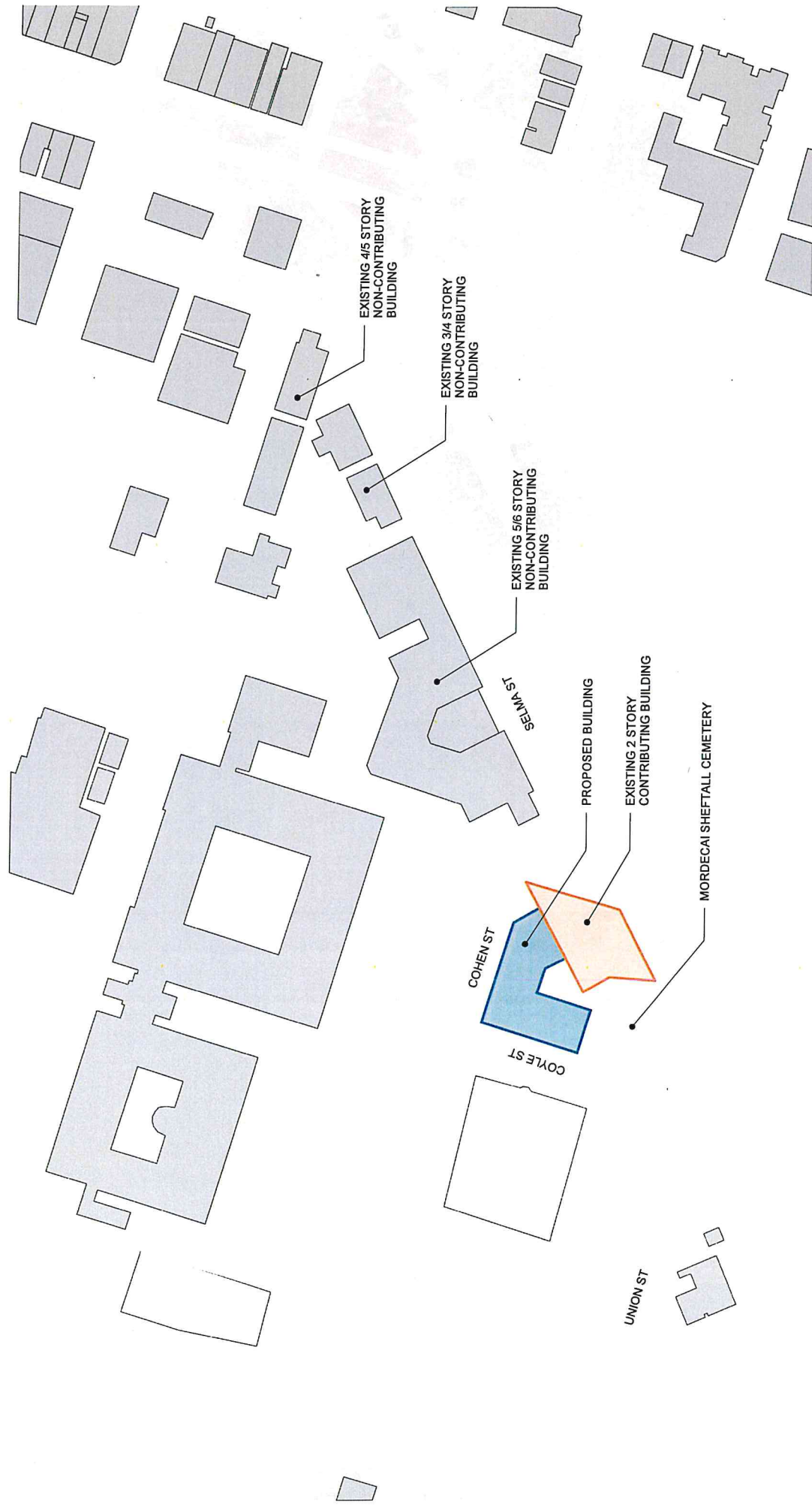
PIN #20045 14001



LYNCH
associates
architects

PRELIMINARY DESIGN

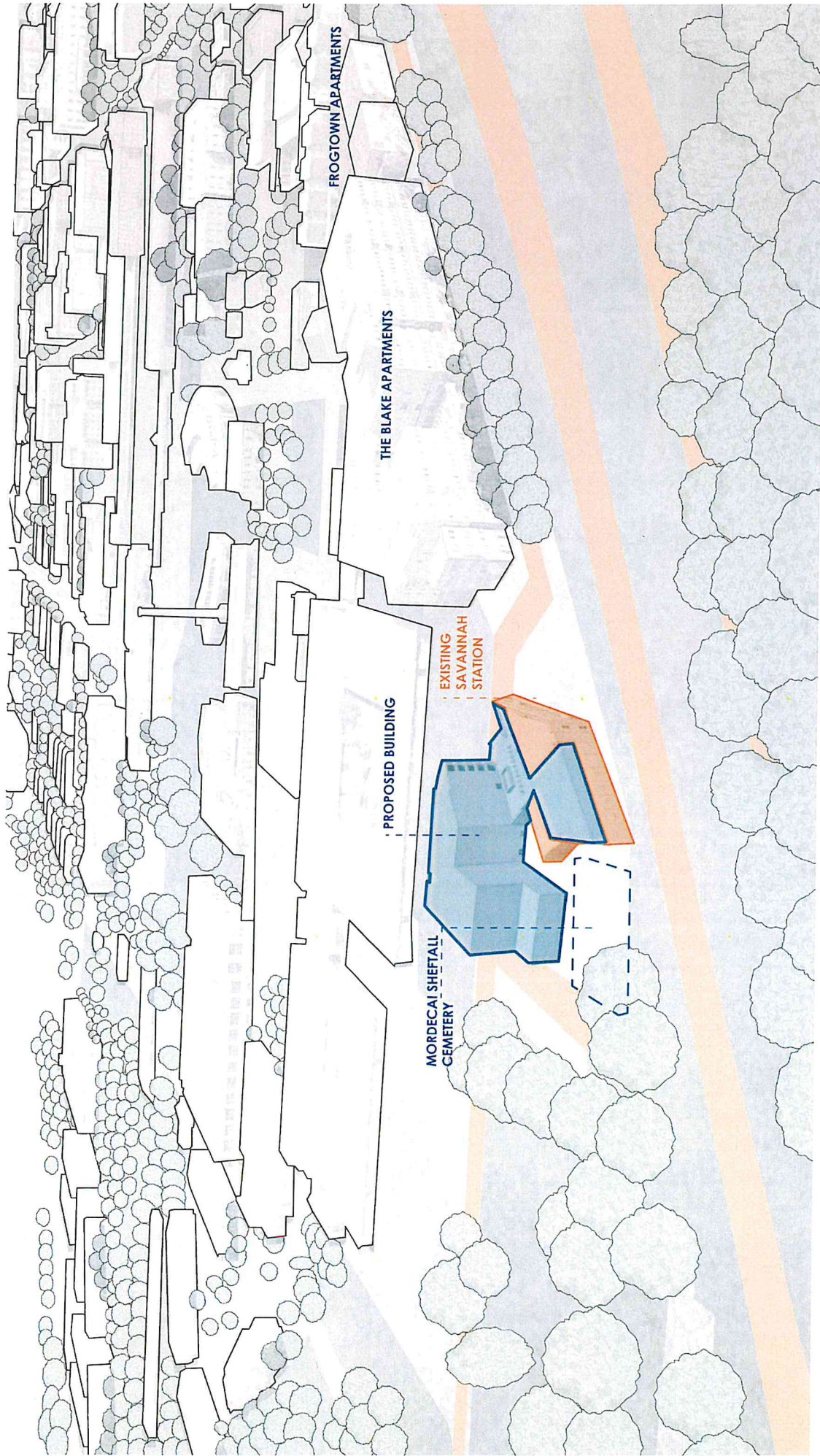
8.20.2024



LYNCH | **LOCATION PLAN**
 SAVANNAH STATION HOTEL
 601 COHEN STREET, SAVANNAH GA, 31401

LYNCH
 associates
 architects

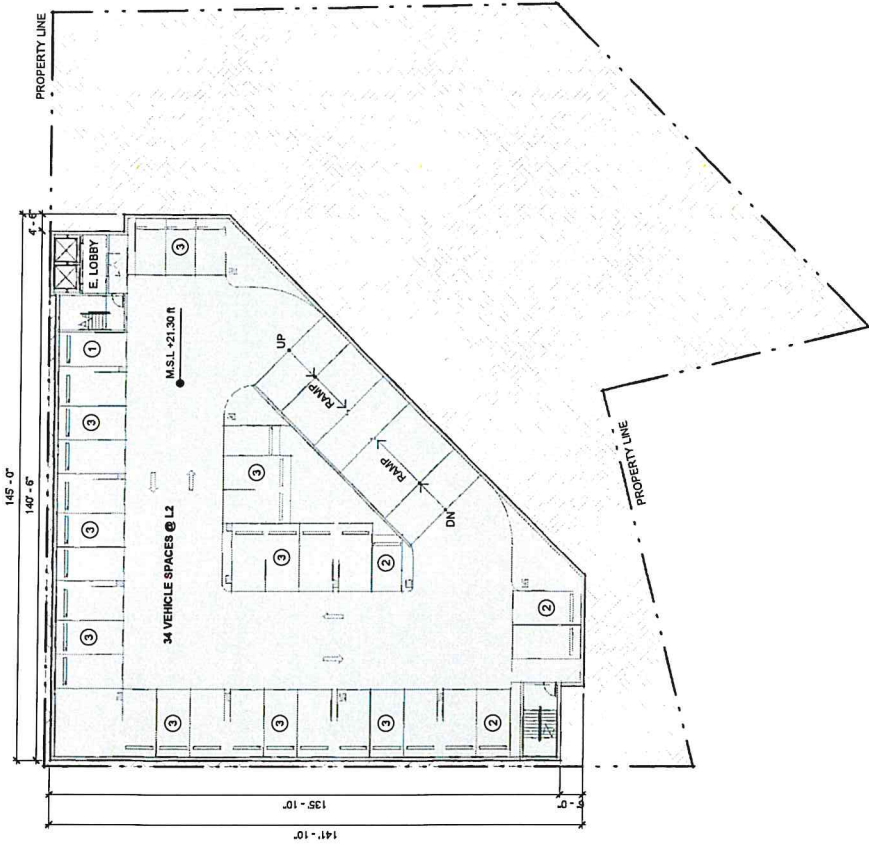




8.20.2024

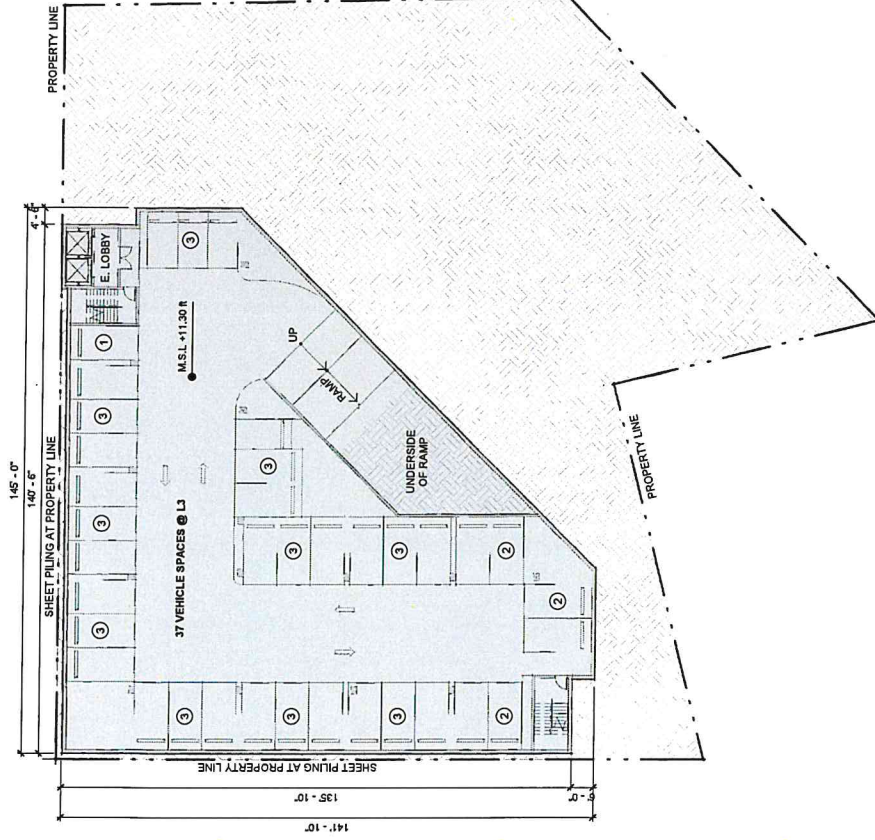
A2





PARKING GARAGE - BASEMENT LEVEL 2

SCALE: 1/32" = 1'-0"



PARKING GARAGE - BASEMENT LEVEL 3



8.20.2024

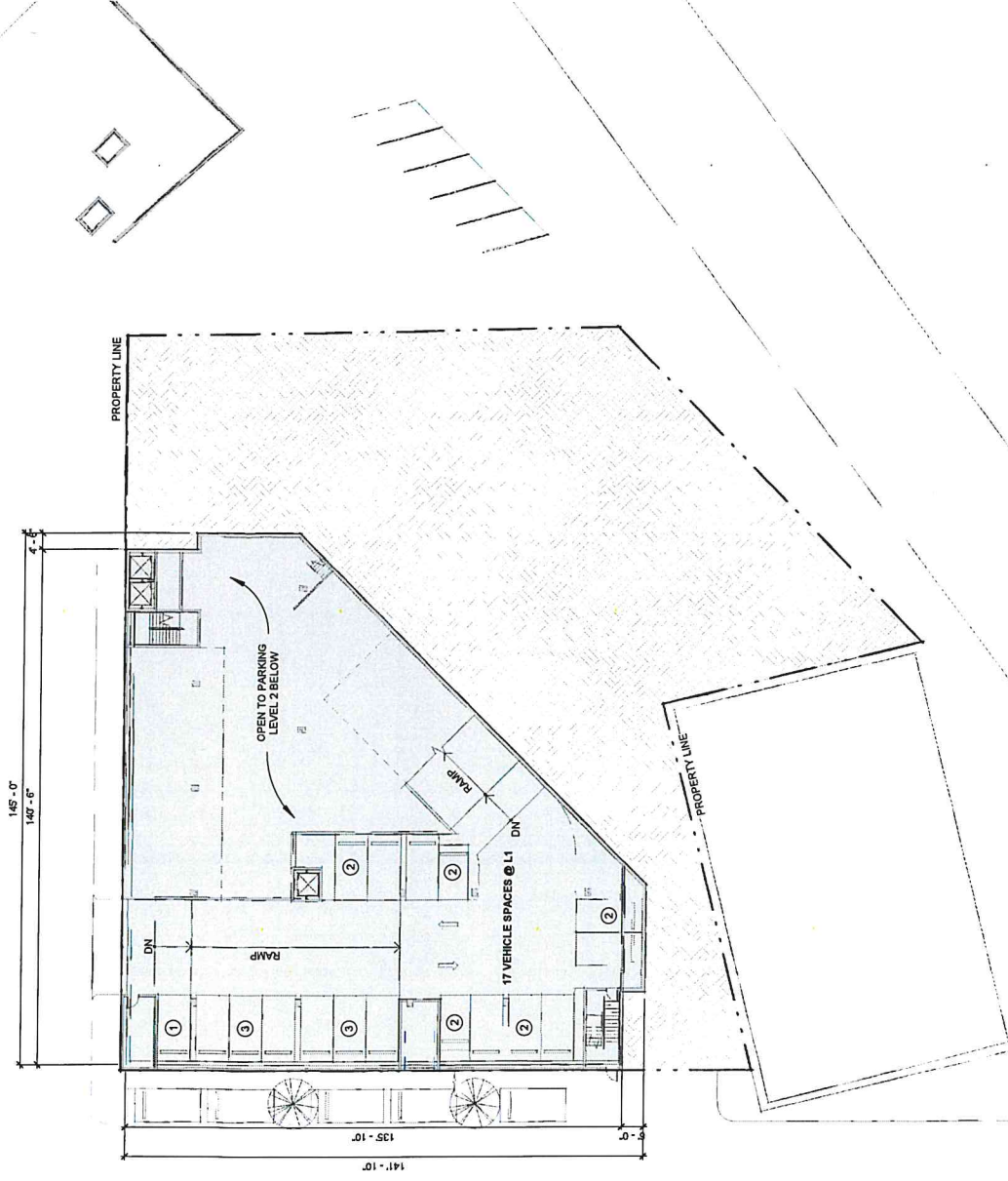
A3

LYNCH | PARKING GARAGE FLOOR PLANS

SAVANNAH STATION HOTEL
601 COHEN STREET, SAVANNAH GA, 31401

associates
architects





PARKING GARAGE - BASEMENT LEVEL 1

SCALE: 1/32" = 1'-0"



LYNCH
associates
architects

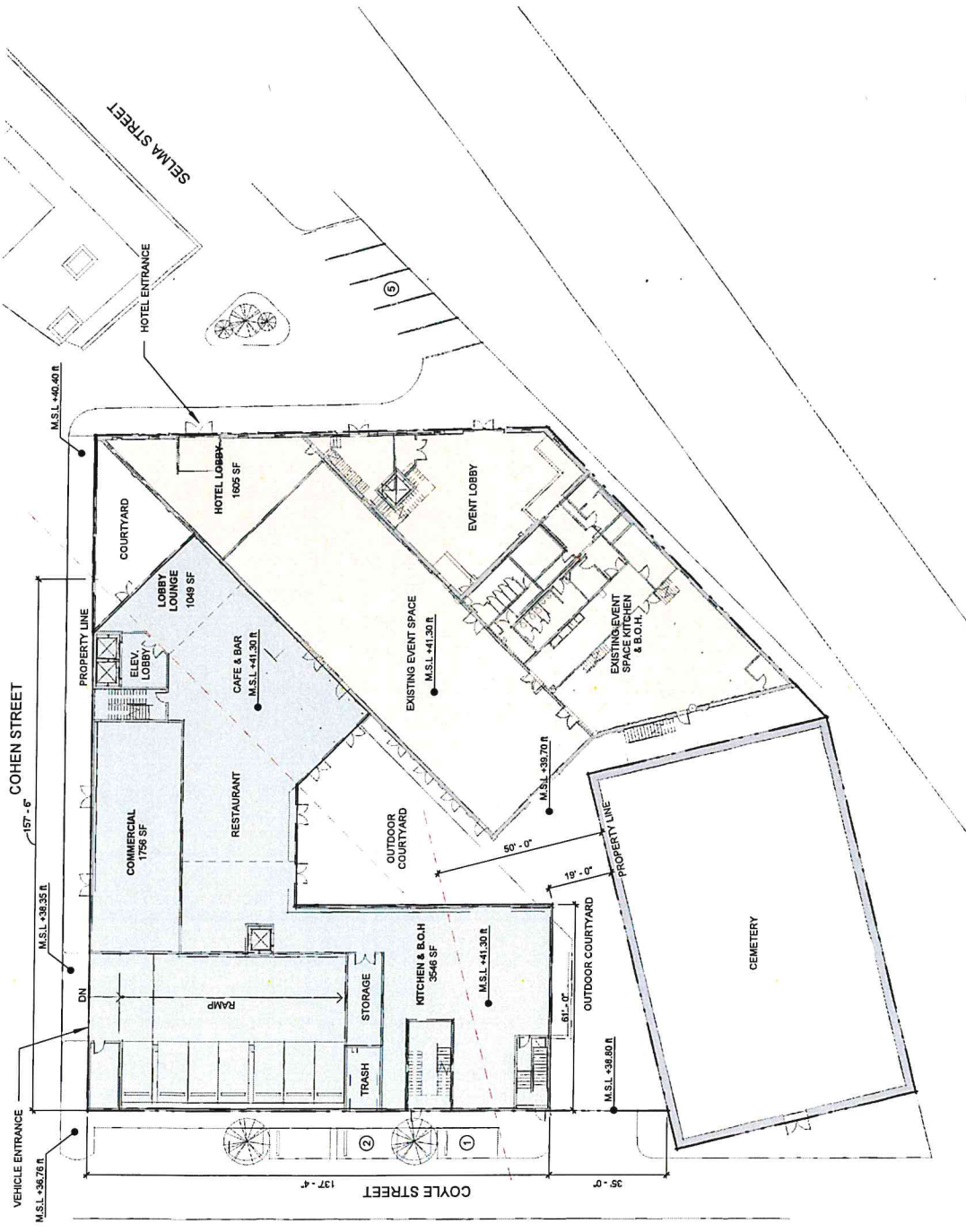
PARKING GARAGE FLOOR PLAN

SAVANNAH STATION HOTEL
601 COHEN STREET, SAVANNAH GA, 31401



8.20.2024

A4

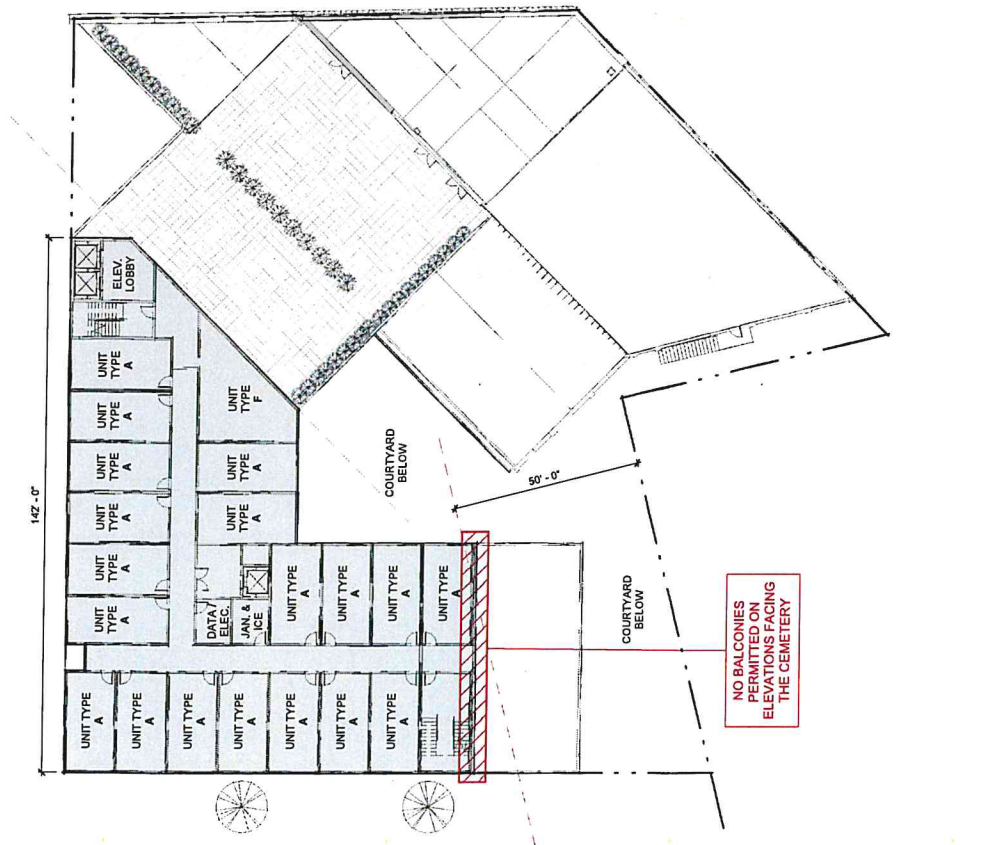


FIRST FLOOR PLAN
 SCALE: 1/32" = 1'-0"

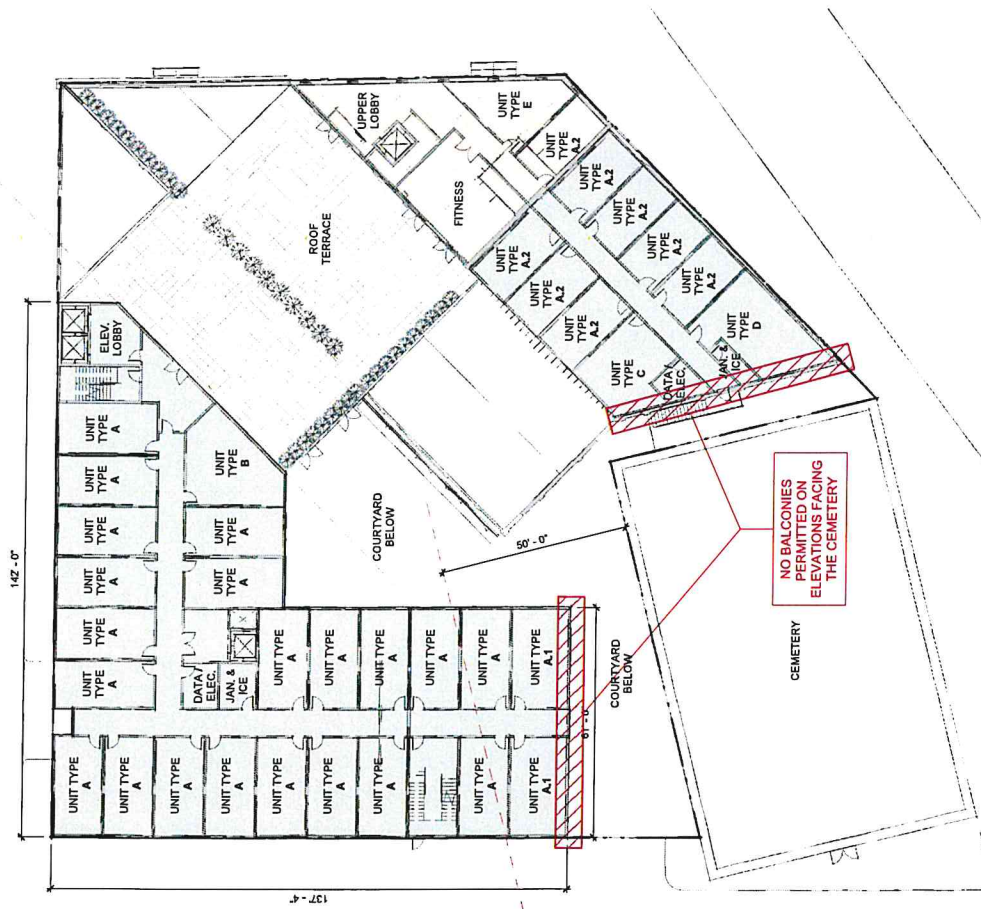
LYNCH | **FIRST FLOOR PLAN**
associates | SAVANNAH STATION HOTEL
architects | 601 COHEN STREET, SAVANNAH GA, 31401

8.20.2024

A5

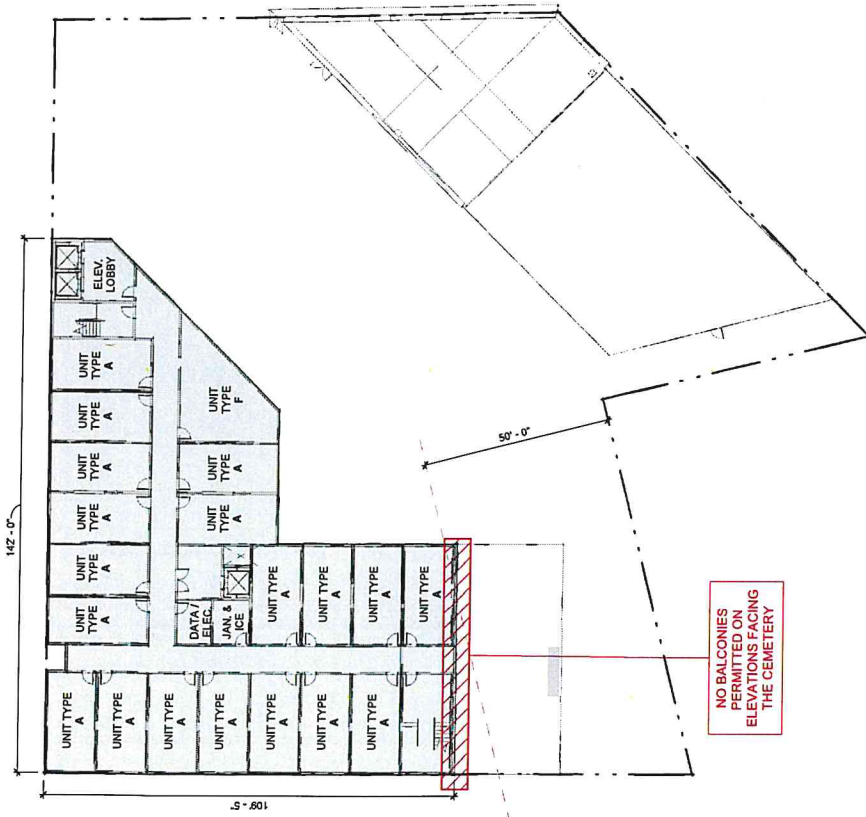


THIRD FLOOR PLAN



SECOND FLOOR PLAN

SCALE: 1/32" = 1'-0"



NO BALCONIES
PERMITTED ON
ELEVATIONS FACING
THE CEMETERY

FOURTH - FIFTH FLOOR PLAN

SCALE: 1/32" = 1'-0"

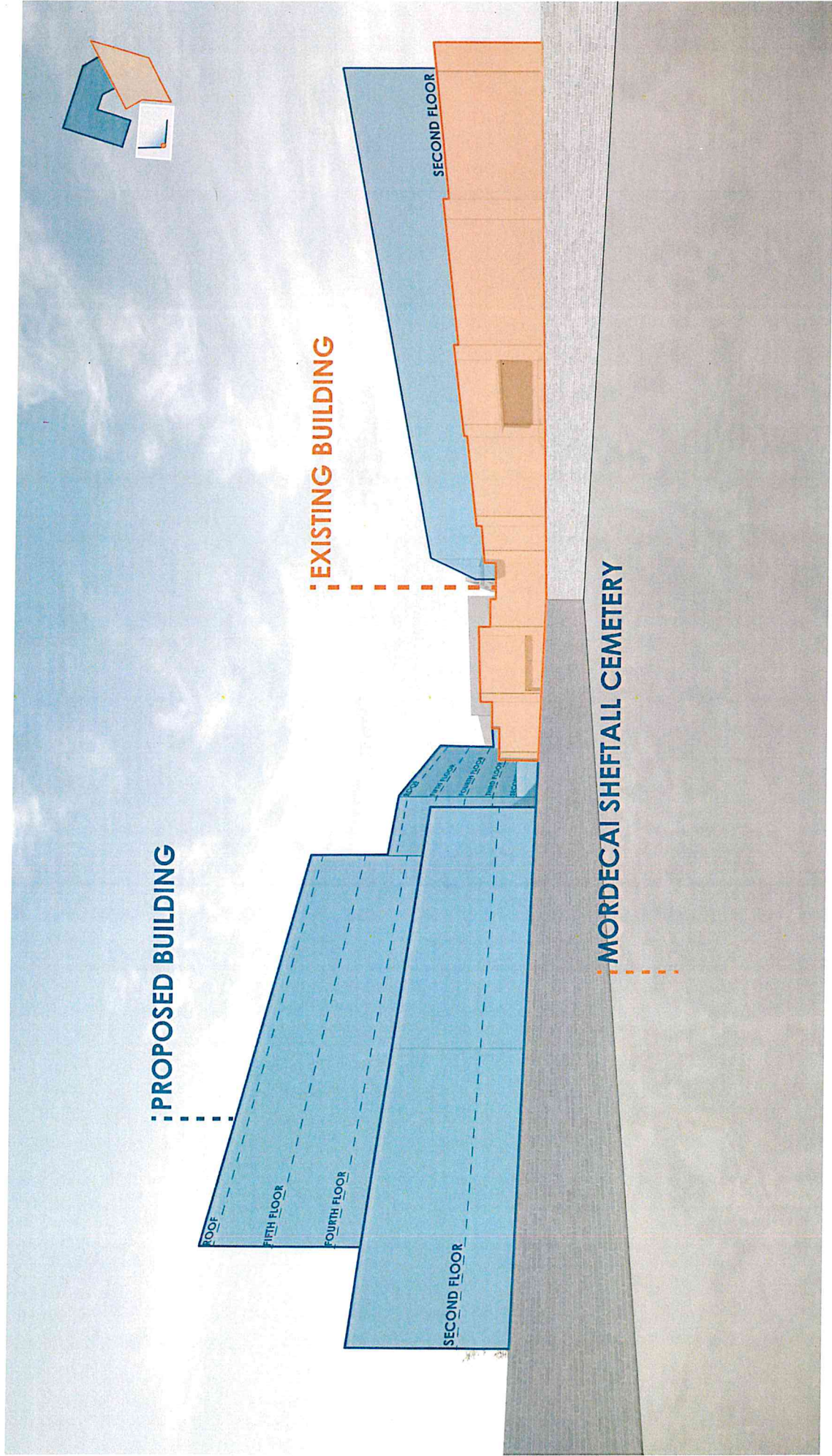


LYNCH
associates
architects

FLOOR PLANS
SAVANNAH STATION HOTEL
601 COHEN STREET, SAVANNAH GA, 31401

8.20.2024

A7



LYNCH | **PERSPECTIVE VIEW**

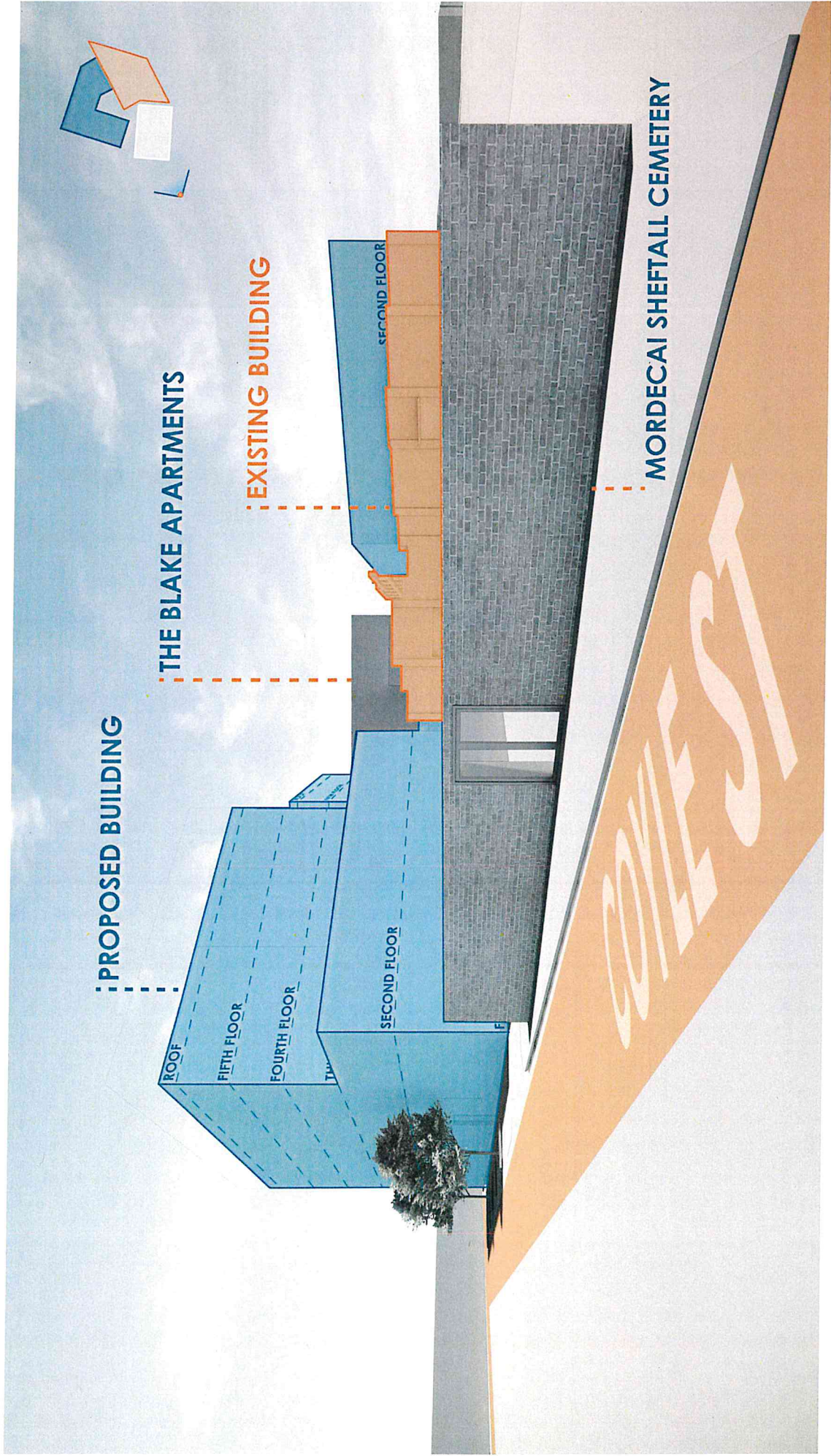
SAVANNAH STATION HOTEL
601 COHEN STREET, SAVANNAH GA, 31401

LYNCH
associates
architects



8.20.2024

A8



LYNCH | **PERSPECTIVE VIEW**

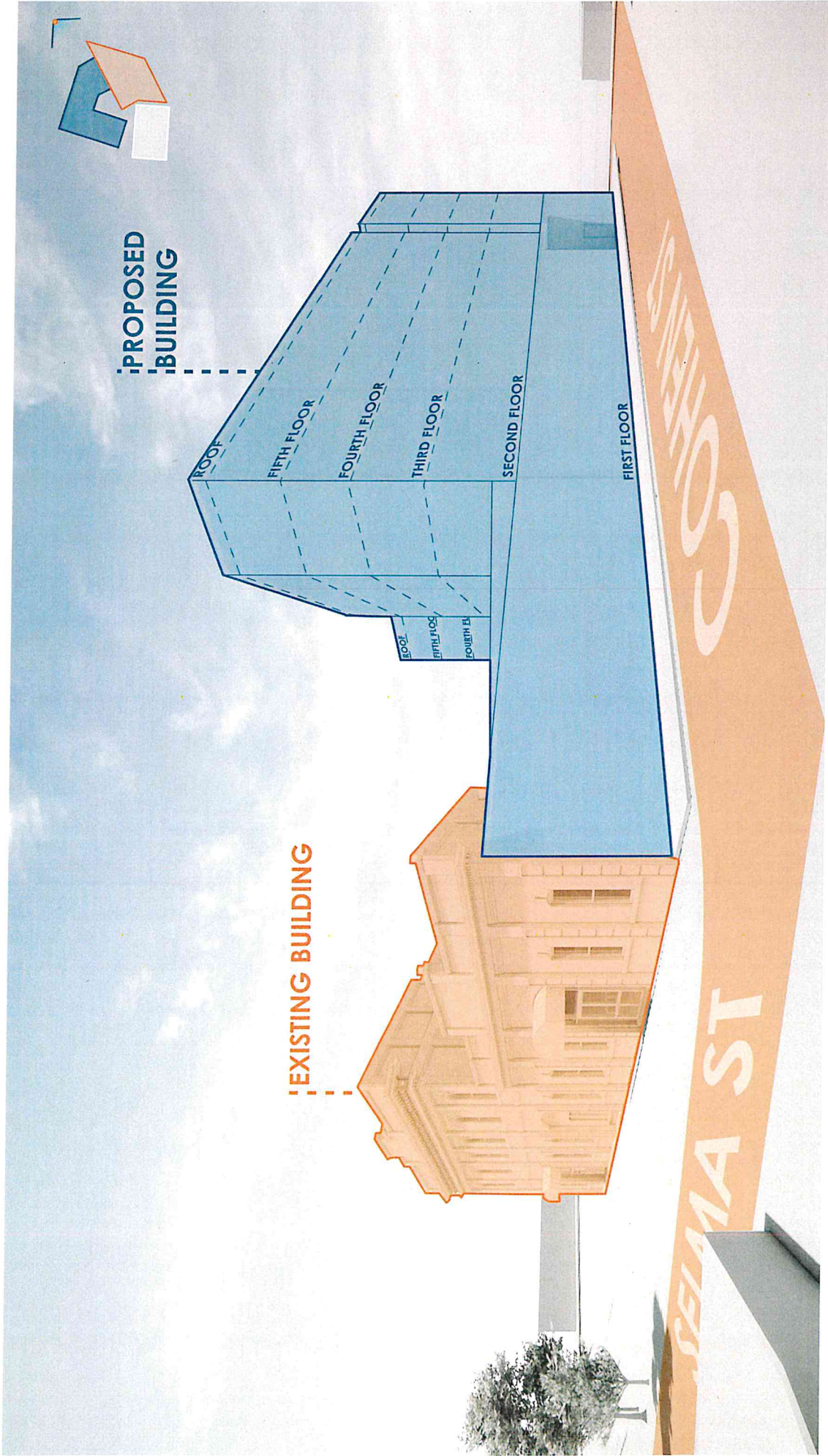
SAVANNAH STATION HOTEL
601 COHEN STREET, SAVANNAH GA, 31401

LYNCH
associates
architects



8.20.2024

A9



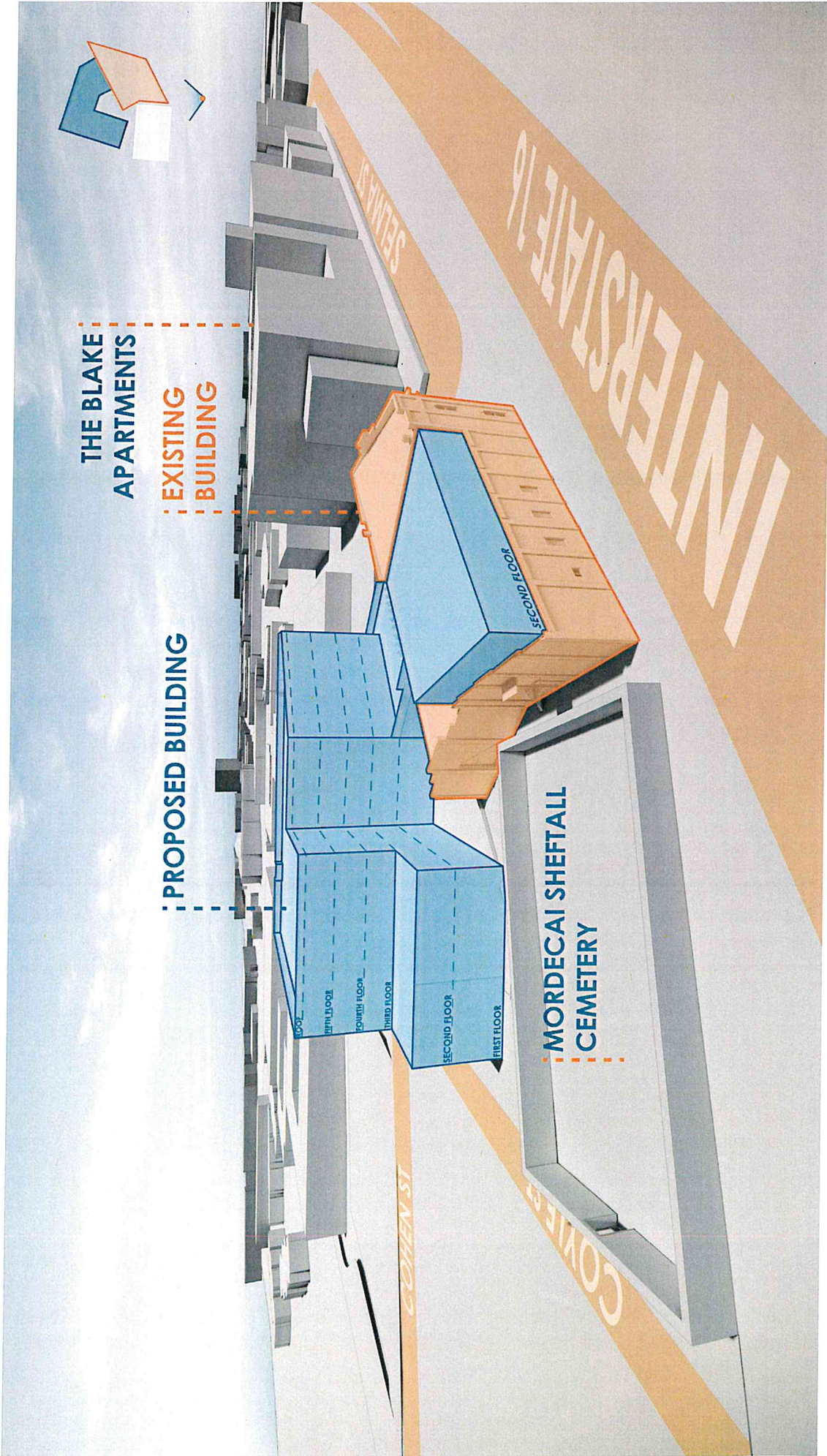
LYNCH | **PERSPECTIVE VIEW**
associates
architects

SAVANNAH STATION HOTEL
601 COHEN STREET, SAVANNAH GA, 31401

8.20.2024

A10

La₂



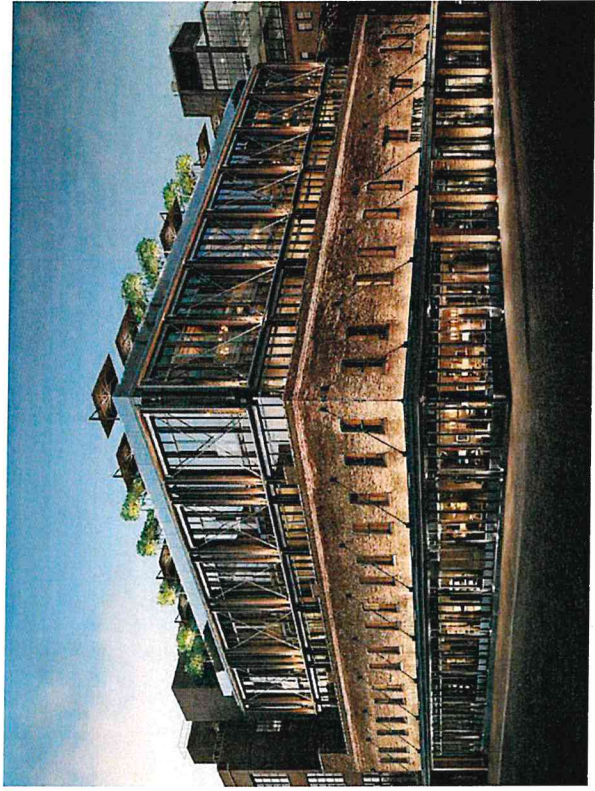
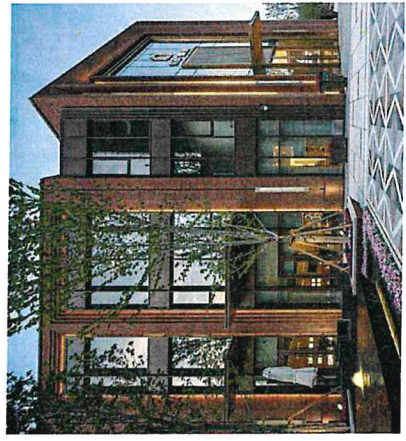
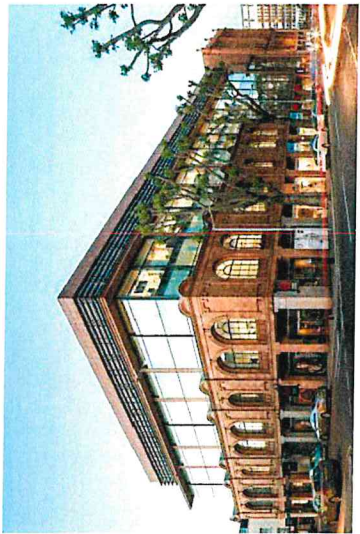
LYNCH | **PERSPECTIVE VIEW**
associates
architects

8.20.2024

A11



SAVANNAH STATION HOTEL
 601 COHEN STREET, SAVANNAH GA, 31401



INSPIRATION
 SAVANNAH STATION HOTEL
 601 COHEN STREET, SAVANNAH GA, 31401

LYNCH
 associates
 architects



8.20.2024

A12