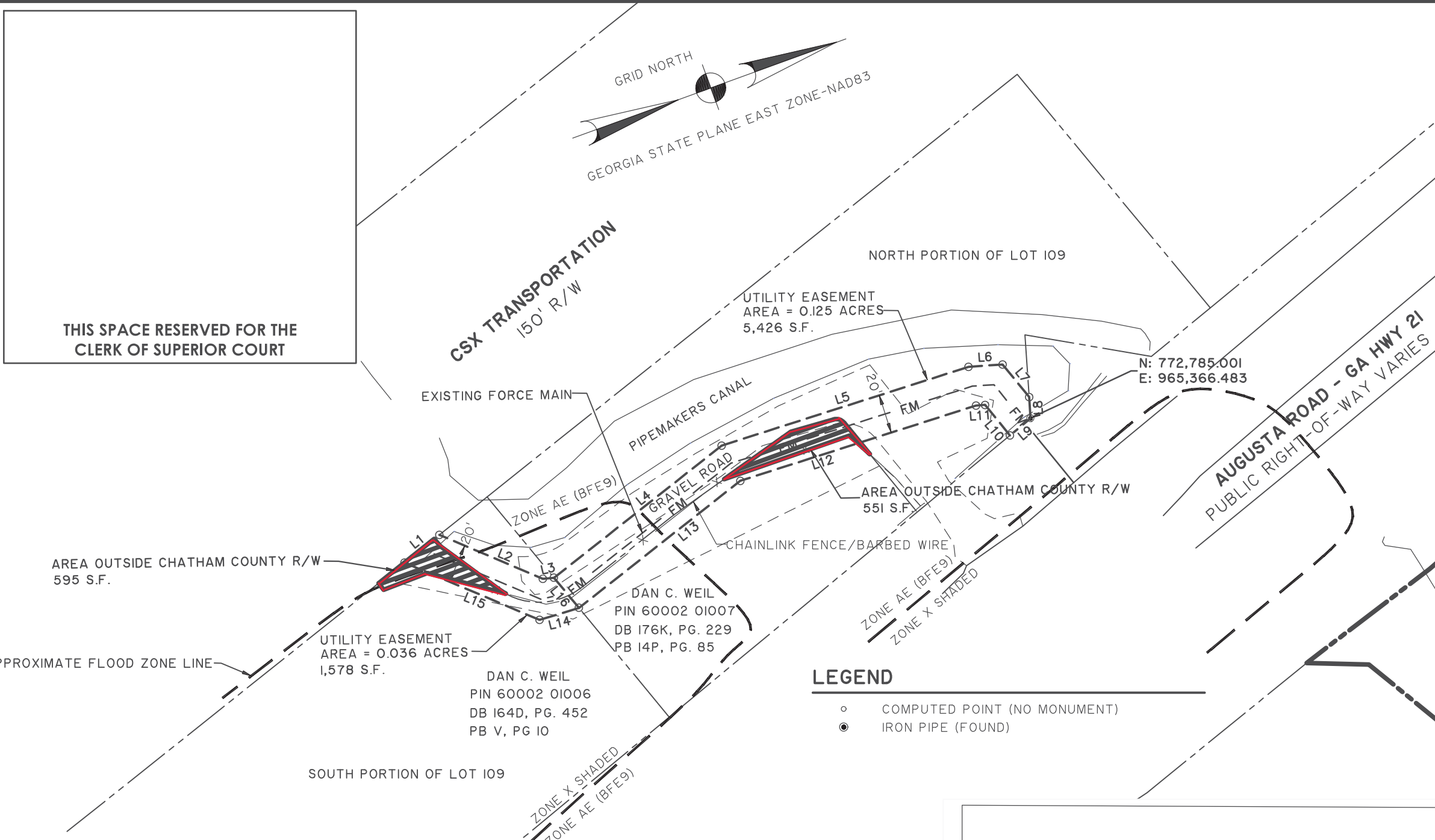


Z:\27788\27788-0000\Survey\DWG\27788.0000sp01-CC Easement.dwg -- Aug 9, 2023 -- 7:47:51 AM



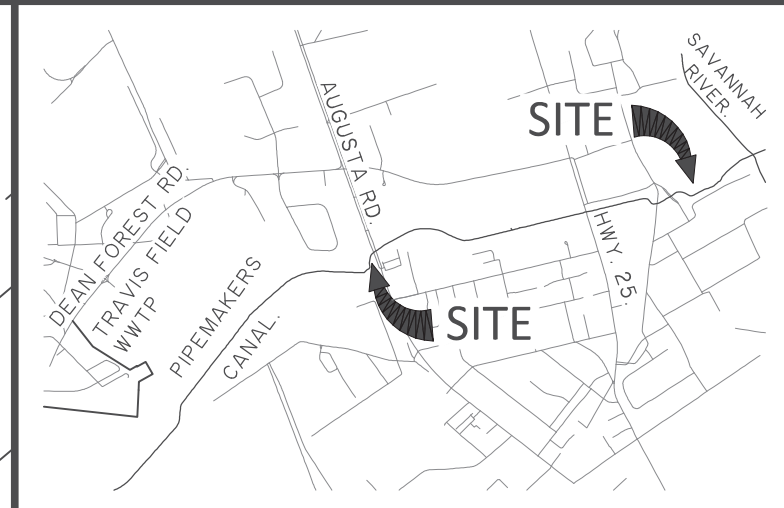
LEGEND

- COMPUTED POINT (NO MONUMENT)
- IRON PIPE (FOUND)

LINE TABLE		
LINE	BEARING	LENGTH
L1	N 18°34'02" W	22.75'
L2	N 42°59'00" E	57.45'
L3	N 15°01'25" E	5.73'
L4	N 18°16'17" W	109.04'
L5	N 02°16'40" E	132.45'
L6	N 16°02'56" E	17.43'
L7	N 70°49'01" E	21.44'
L8	S 73°49'45" E	10.93'
L9	S 19°36'02" E	13.68'
L10	S 70°49'01" W	20.09'
L11	S 16°02'56" W	4.66'
L12	S 02°16'40" W	126.41'
L13	S 18°16'17" E	104.95'
L14	S 03°13'21" W	21.07'
L15	S 42°59'00" W	74.91'
L16	N 70°23'52" E	20.01'

NOTES

- FIELD EQUIPMENT USED FOR THIS SURVEY: GEOMAX ZOOM90 R2
- THE FIELD DATA UPON WHICH THIS MAP OR PLAT IS BASED HAS A CLOSURE RATIO OF 1 FOOT IN 146,712 FEET, AN ANGULAR ERROR OF 5" PER ANGLE POINT, AND WAS ADJUSTED USING THE COMPASS RULE METHOD.
- THIS PLAT HAS A PRECISION OF ONE FOOT IN 41,976.
- COORDINATES AND DIRECTIONS ARE BASED ON GEORGIA STATE PLANE COORDINATE SYSTEM (NAD83), EAST ZONE.
- ACCORDING TO F.I.R.M. MAP NO. I305IC, PANEL 0135H, EFFECTIVE 8/16/2018, THE PROPERTY SHOWN ON THIS PLAT LIES IN ZONES AE (BFE9) AND X SHADED.
- WETLANDS THAT MAY EXIST ON THE PROPERTY ARE UNDER THE JURISDICTION OF THE CORPS OF ENGINEERS AND/OR THE DEPARTMENT OF NATURAL RESOURCES. LOT OWNERS AND THE DEVELOPER ARE SUBJECT TO PENALTY BY LAW FOR DISTURBANCE TO THESE PROTECTED AREAS WITHOUT PROPER PERMIT AND APPROVAL.
- THE POSITION OF UNDERGROUND UTILITIES SHOWN ON THIS DRAWING IS BASED UPON THE LOCATION OF SURFACE APPURTENANCES AND/OR SURFACE MARKINGS AND SHOULD BE CONSIDERED APPROXIMATE. THE EXACT LOCATION, SIZE, TYPE AND DEPTH OF UNDERGROUND UTILITIES SHOWN HEREON OR ANY OTHER UTILITIES THAT MAY EXIST, CAN ONLY BE DETERMINED VIA AN EXCAVATION OF THE UTILITY.



This document and all reproducible copies of this document are the property of Thomas & Hutton. Reproduction of this document is not permitted without written consent of Thomas & Hutton unless this document becomes a matter of public record. ALTERATIONS TO THIS DOCUMENT ARE NOT PERMITTED.

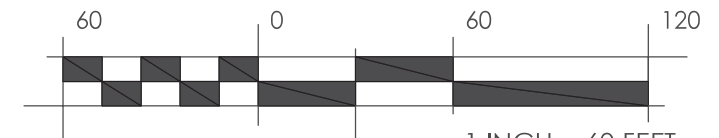
EXHIBIT
TRAVIS FIELD WATER RECLAMATION FACILITY FORCE MAIN
BEING PORTIONS OF LOT 109 INDUSTRIAL CITY GARDENS

8TH G.M. DISTRICT, GARDEN CITY
CHATHAM COUNTY, GEORGIA
prepared for
MAYOR AND ALDERMAN OF THE
CITY OF SAVANNAH



50 Park of Commerce Way
Savannah, GA 31405 • 912.234.5300

www.thomasandhutton.com



plat	drawn	reviewed	field	crew
02/16/23	BW	WCP	02/08/23	MB
job 27788.0000			SHEET 1 OF 1	