

AERIAL MAP

File: 24-001759-ZA
File: 24-001813-ZA (FLUM)
Address: 1421 and 1425 W. Gwinnett St.
Savannah, Ga
Aldermanic District: 1 - Lanier
Commission District: 8 - Adams
Neighborhood: See Map
Property ID: PIN: 20050 16021 & 022

* Newly annexed parcels may need
Aldermanic & County Commission District
determination

Date: 12/18/2024



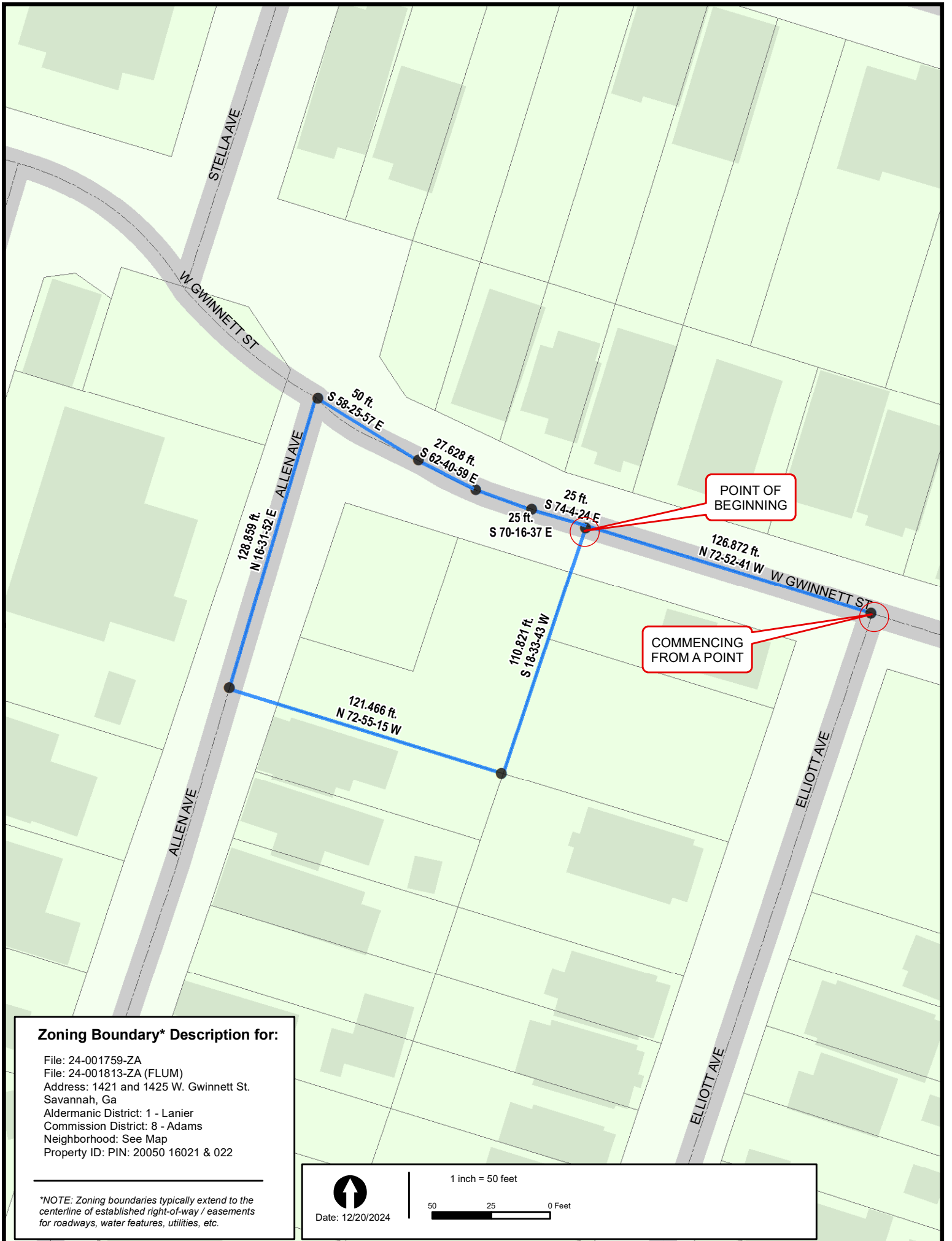
CHATHAM COUNTY - SAVANNAH
METROPOLITAN PLANNING COMMISSION
110 E. STATE ST. SAVANNAH, GA 31412-8246 PHONE 912-651-1440

THIS MAP IS A COMPILATION OF INFORMATION FROM VARIOUS SOURCES AND SCALES. IN MOST CASES THE INFORMATION HAS NOT BEEN FIELD VERIFIED. USE THIS MAP FOR GENERAL PLANNING PURPOSES ONLY.



1 inch = 100 feet

D



Zoning Boundary* Description for:

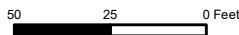
File: 24-001759-ZA
 File: 24-001813-ZA (FLUM)
 Address: 1421 and 1425 W. Gwinnett St.
 Savannah, Ga
 Aldermanic District: 1 - Lanier
 Commission District: 8 - Adams
 Neighborhood: See Map
 Property ID: PIN: 20050 16021 & 022

*NOTE: Zoning boundaries typically extend to the centerline of established right-of-way / easements for roadways, water features, utilities, etc.



Date: 12/20/2024

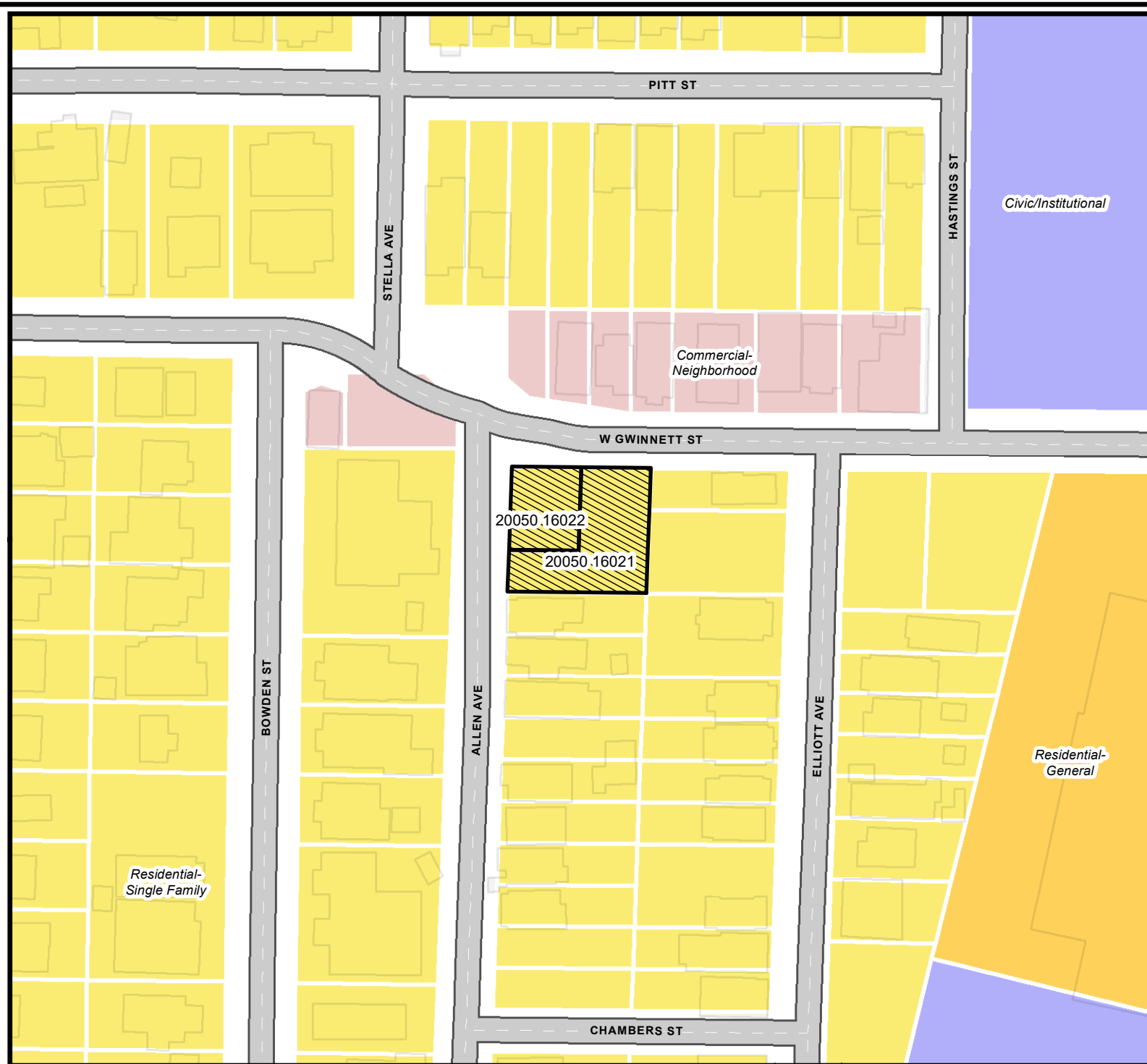
1 inch = 50 feet



FUTURE LAND USE

File: 24-001759-ZA
 File: 24-001813-ZA (FLUM)
 Address: 1421 and 1425 W. Gwinnett St.
 Savannah, Ga
 Aldermanic District: 1 - Lanier
 Commission District: 8 - Adams
 Neighborhood: See Map
 Property ID: PIN: 20050 16021 & 022

* Newly annexed parcels may need Aldermanic & County Commission District determination



- Commercial- Neighborhood
- Residential- Single Family
- Residential- General
- Civic/Institutional

Date: 12/18/2024



CHATHAM COUNTY - SAVANNAH
METROPOLITAN PLANNING COMMISSION
 110 E. STATE ST. SAVANNAH, GA 31412-8246 PHONE 912-651-1440

THIS MAP IS A COMPILATION OF INFORMATION FROM VARIOUS SOURCES AND SCALES. IN MOST CASES THE INFORMATION HAS NOT BEEN FIELD VERIFIED. USE THIS MAP FOR GENERAL PLANNING PURPOSES ONLY.



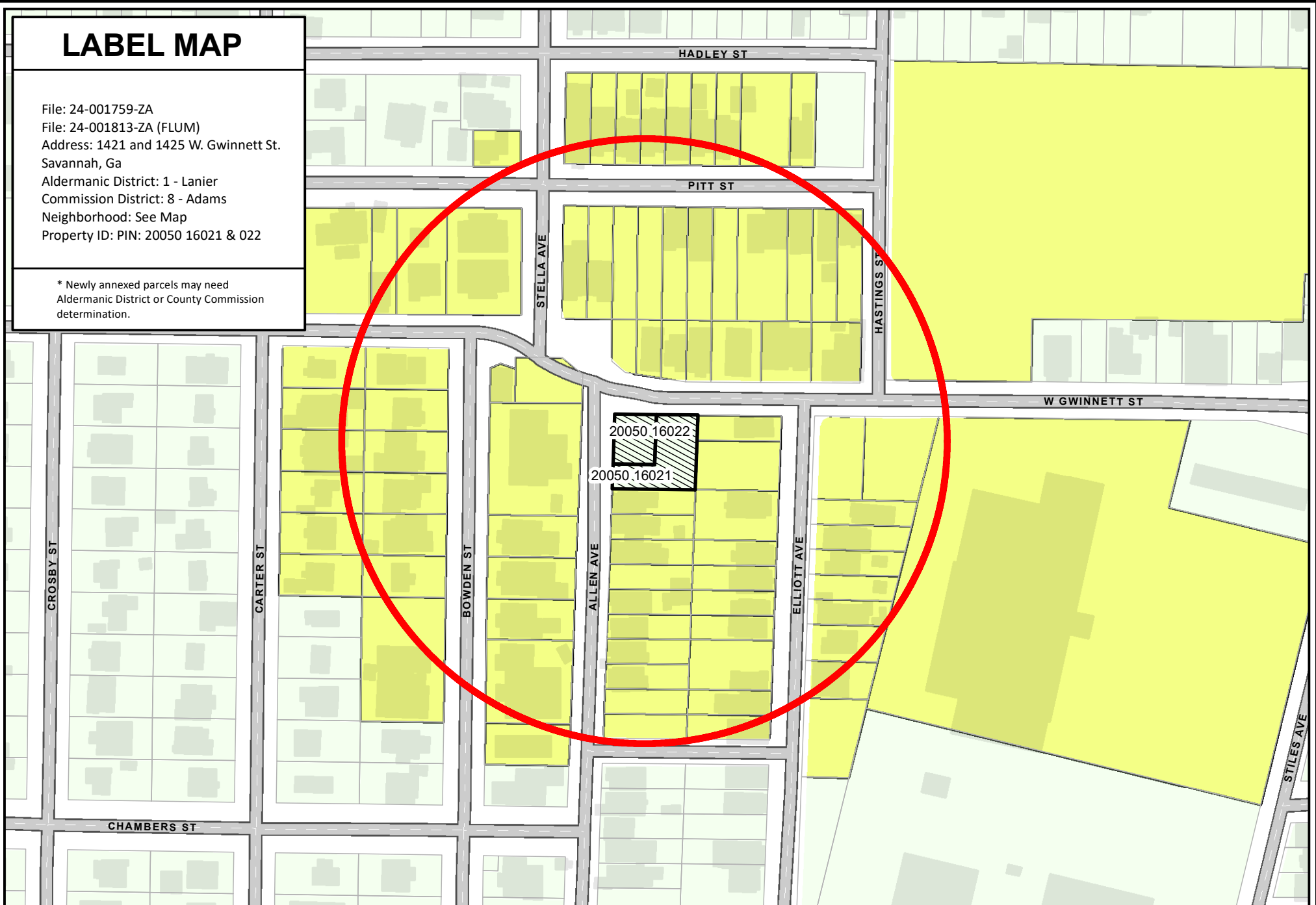
1 inch = 100 feet

D

LABEL MAP

File: 24-001759-ZA
File: 24-001813-ZA (FLUM)
Address: 1421 and 1425 W. Gwinnett St.
Savannah, Ga
Aldermanic District: 1 - Lanier
Commission District: 8 - Adams
Neighborhood: See Map
Property ID: PIN: 20050 16021 & 022

* Newly annexed parcels may need
Aldermanic District or County Commission
determination.



THIS MAP IS A COMPILATION OF INFORMATION FROM VARIOUS SOURCES AND SCALES. IN MOST CASES THE INFORMATION HAS NOT BEEN FIELD VERIFIED.
USE THIS MAP FOR GENERAL PLANNING PURPOSES ONLY.



Date: 12/18/2024

1 inch = 150 feet



CHATHAM COUNTY - SAVANNAH
METROPOLITAN PLANNING COMMISSION
110 E. STATE ST. SAVANNAH, GA 31412-8246 PHONE 912-651-1440

VICINITY MAP

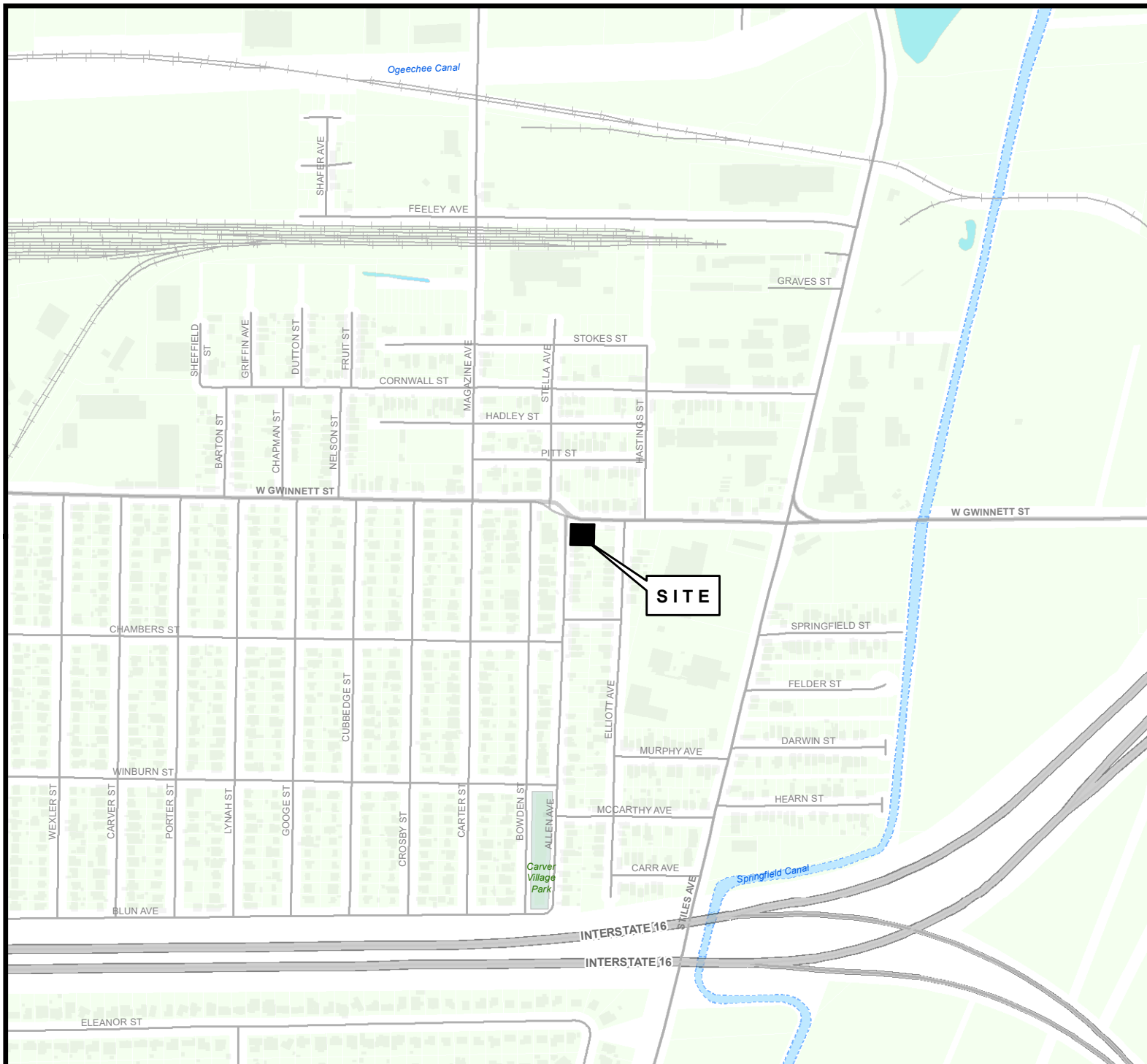
File: 24-001759-ZA
 File: 24-001813-ZA (FLUM)
 Address: 1421 and 1425 W. Gwinnett St.
 Savannah, Ga
 Aldermanic District: 1 - Lanier
 Commission District: 8 - Adams
 Neighborhood: See Map
 Property ID: PIN: 20050 16021 & 022

* Newly annexed parcels may need
 Aldermanic & County Commission District
 determination

Date: 12/18/2024



CHATHAM COUNTY - SAVANNAH
METROPOLITAN PLANNING COMMISSION
 110 E. STATE ST. SAVANNAH, GA 31412-8246 PHONE 912-651-1440



THIS MAP IS A COMPILATION OF INFORMATION FROM VARIOUS SOURCES AND SCALES. IN MOST CASES THE INFORMATION HAS NOT BEEN FIELD VERIFIED. USE THIS MAP FOR GENERAL PLANNING PURPOSES ONLY.



1 inch = 600 feet

D

ZONING MAP

WITH TAX PARCELS

File: 24-001759-ZA
File: 24-001813-ZA (FLUM)
Address: 1421 and 1425 W. Gwinnett St.
Savannah, Ga
Aldermanic District: 1 - Lanier
Commission District: 8 - Adams
Neighborhood: See Map
Property ID: PIN: 20050 16021 & 022

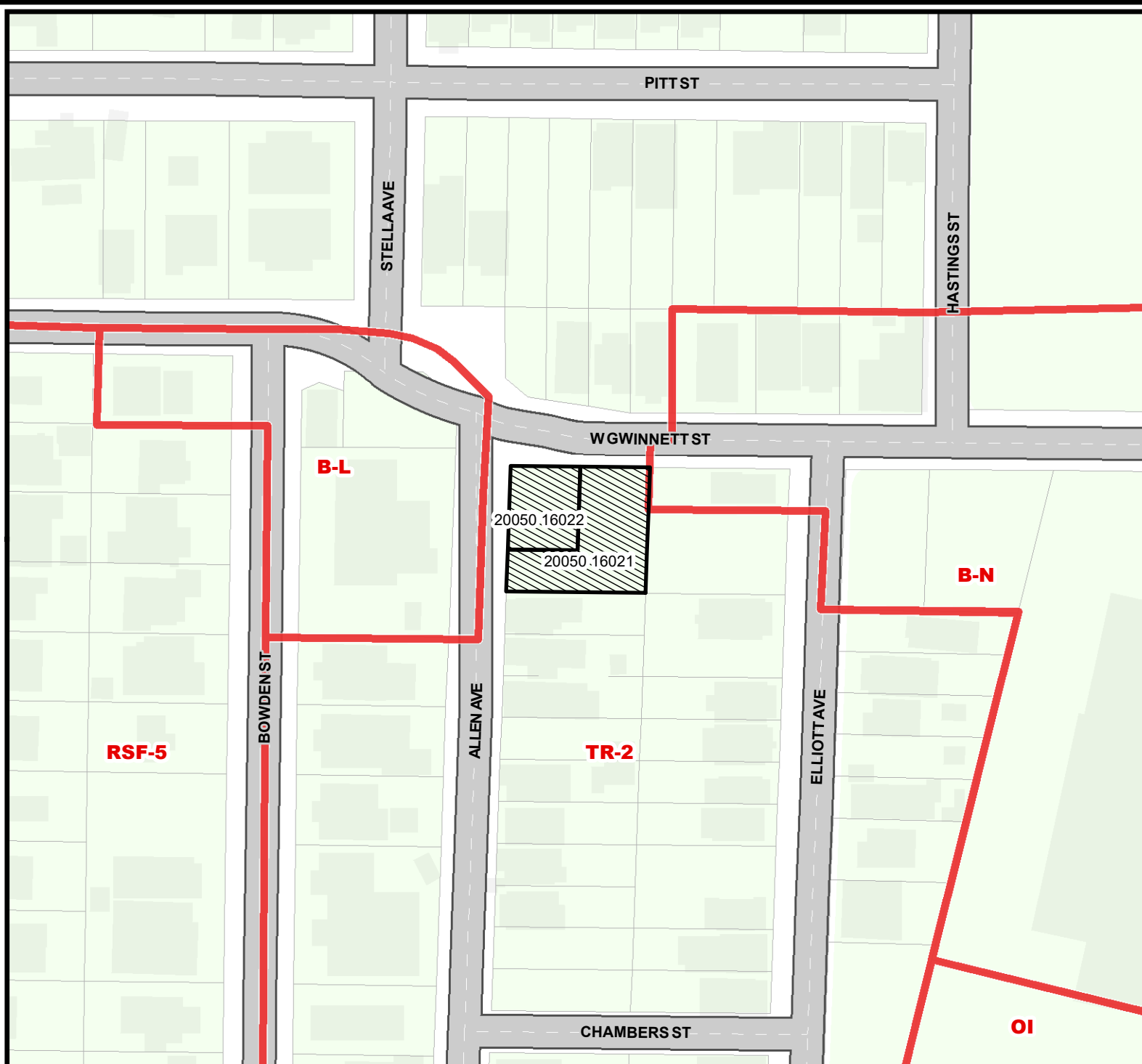
* Newly annexed parcels may need
Aldermanic & County Commission District
determination

 ZONING

Date: 12/18/2024



CHATHAM COUNTY - SAVANNAH
METROPOLITAN PLANNING COMMISSION
110 E. STATE ST. SAVANNAH, GA 31412-8246 PHONE 912-651-1440



THIS MAP IS A COMPILATION OF INFORMATION FROM VARIOUS SOURCES AND SCALES. IN MOST CASES THE INFORMATION HAS NOT BEEN FIELD VERIFIED. USE THIS MAP FOR GENERAL PLANNING PURPOSES ONLY.



1 inch = 100 feet

D