

# TAX MAP

File: 24-001104-ZA  
Address: Various  
Savannah, Ga  
Aldermanic District: 2 - Leggett  
Commission District: 2 - Hodge (Rivers)  
Neighborhood: See Map  
Property ID: PIN 20074 07006 & ,006



THIS MAP IS A COMPILATION OF INFORMATION FROM VARIOUS SOURCES AND SCALES. IN MOST CASES THE INFORMATION HAS NOT BEEN FIELD VERIFIED. USE THIS MAP FOR GENERAL PLANNING PURPOSES ONLY.



1 inch = 50 feet

D

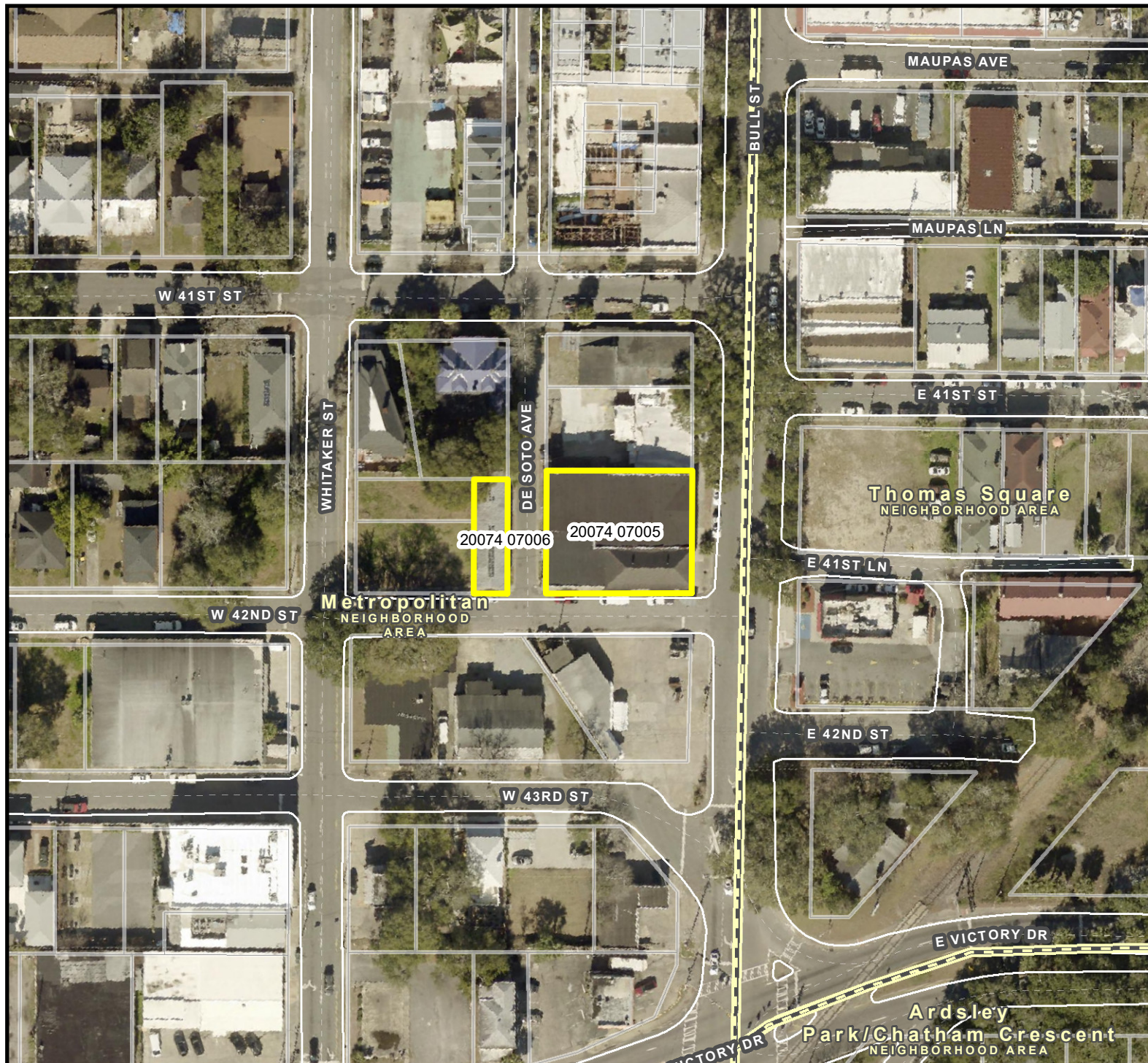


Date: 3/1/2024

CHATHAM COUNTY - SAVANNAH  
**METROPOLITAN PLANNING COMMISSION**  
110 E. STATE ST. SAVANNAH, GA 31412-8246 PHONE 912-651-1440

# AERIAL MAP

File: 24-001104-ZA  
Address: Various  
Savannah, Ga  
Aldermanic District: 2 - Leggett  
Commission District: 2 - Hodge (Rivers)  
Neighborhood: See Map  
Property ID: PIN 20074 07006 & ,006



THIS MAP IS A COMPILATION OF INFORMATION FROM VARIOUS SOURCES AND SCALES. IN MOST CASES THE INFORMATION HAS NOT BEEN FIELD VERIFIED. USE THIS MAP FOR GENERAL PLANNING PURPOSES ONLY.



1 inch = 100 feet

D

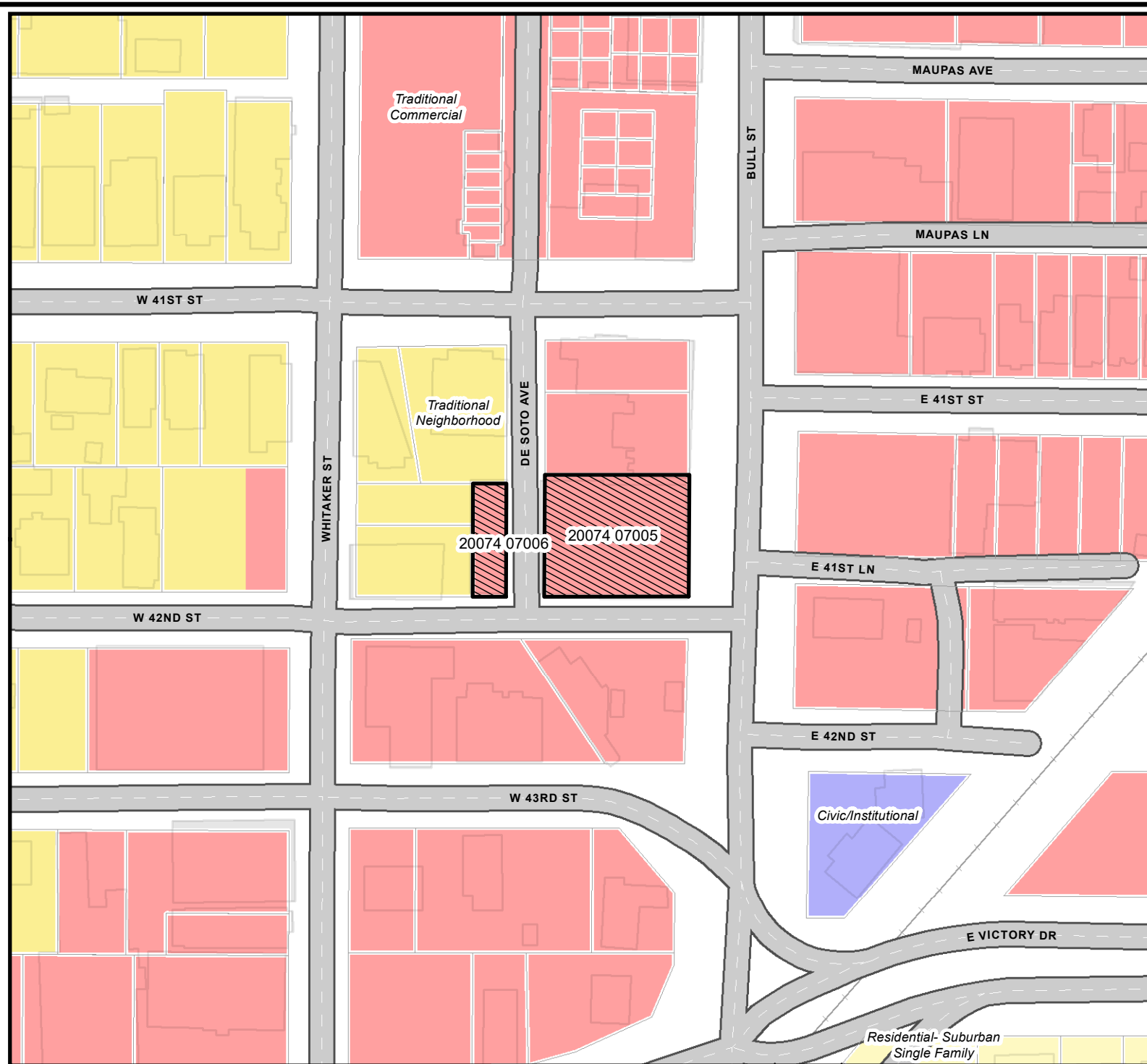
Date: 3/1/2024



CHATHAM COUNTY - SAVANNAH  
**METROPOLITAN PLANNING COMMISSION**  
110 E. STATE ST. SAVANNAH, GA 31412-8246 PHONE 912-651-1440

# FUTURE LAND USE

File: 24-001104-ZA  
 Address: Various  
 Savannah, Ga  
 Aldermanic District: 2 - Leggett  
 Commission District: 2 - Hodge (Rivers)  
 Neighborhood: See Map  
 Property ID: PIN 20074 07006 & ,006



- Traditional Commercial
- Traditional Neighborhood
- Residential- Suburban Single Family
- Civic/Institutional

Date: 3/1/2024



CHATHAM COUNTY - SAVANNAH  
**METROPOLITAN PLANNING COMMISSION**  
 110 E. STATE ST. SAVANNAH, GA 31412-8246 PHONE 912-651-1440

THIS MAP IS A COMPILATION OF INFORMATION FROM VARIOUS SOURCES AND SCALES. IN MOST CASES THE INFORMATION HAS NOT BEEN FIELD VERIFIED. USE THIS MAP FOR GENERAL PLANNING PURPOSES ONLY.

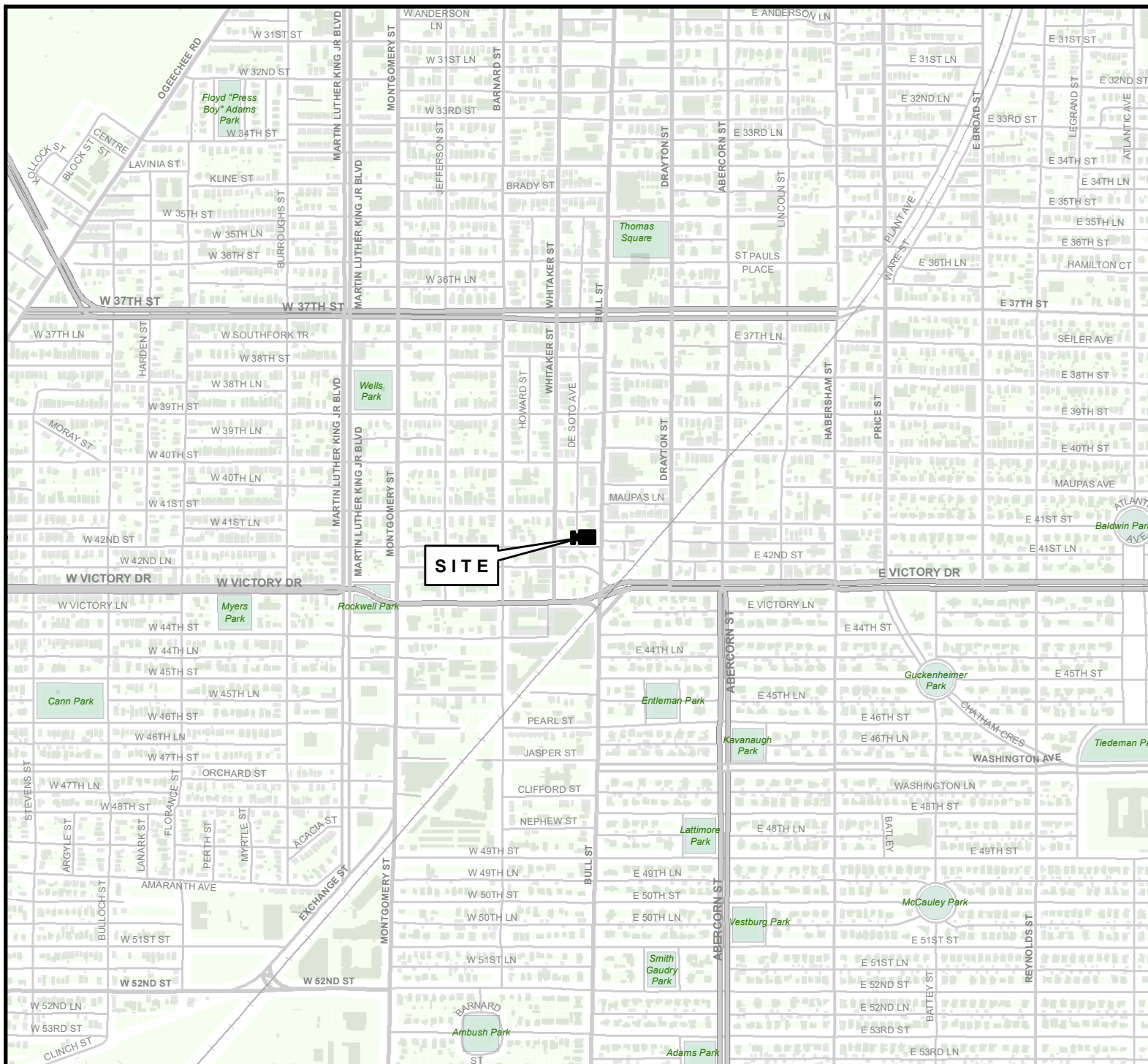


1 inch = 100 feet

D

# VICINITY MAP

File: 24-001104-ZA  
 Address: Various  
 Savannah, Ga  
 Aldermanic District: 2 - Leggett  
 Commission District: 2 - Hodge (Rivers)  
 Neighborhood: See Map  
 Property ID: PIN 20074 07006 & ,006



**SITE**

THIS MAP IS A COMPILATION OF INFORMATION FROM VARIOUS SOURCES AND SCALES. IN MOST CASES THE INFORMATION HAS NOT BEEN FIELD VERIFIED. USE THIS MAP FOR GENERAL PLANNING PURPOSES ONLY.



1 inch = 900 feet

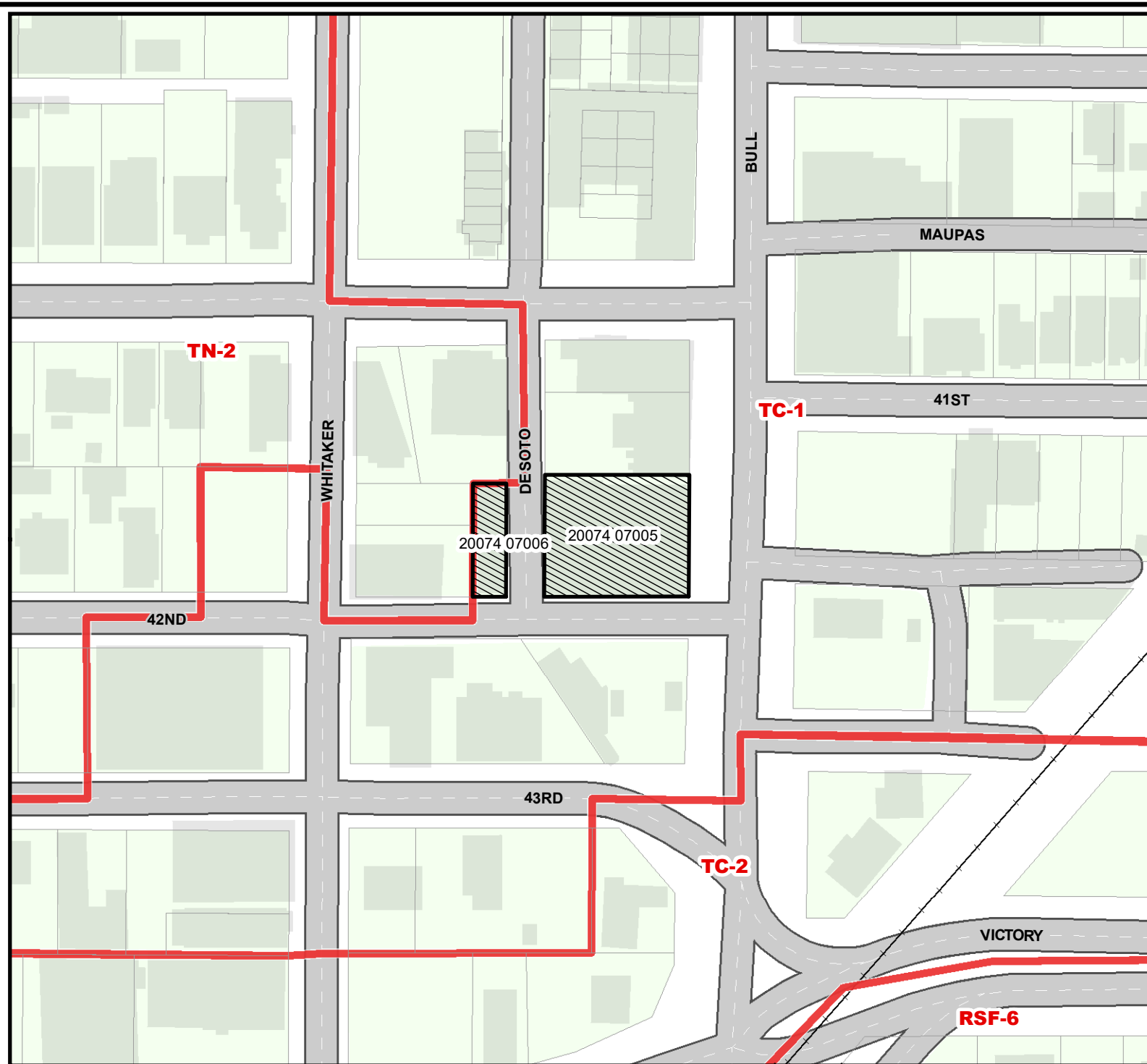
CHATHAM COUNTY - SAVANNAH  
**METROPOLITAN PLANNING COMMISSION**  
 110 E. STATE ST. SAVANNAH, GA 31412-8246 PHONE 912-651-1440



Date: 3/1/2024

# ZONING MAP

File: 24-001104-ZA  
Address: Various  
Savannah, Ga  
Aldermanic District: 2 - Leggett  
Commission District: 2 - Hodge (Rivers)  
Neighborhood: See Map  
Property ID: PIN 20074 07006 & ,006



THIS MAP IS A COMPILATION OF INFORMATION FROM VARIOUS SOURCES AND SCALES. IN MOST CASES THE INFORMATION HAS NOT BEEN FIELD VERIFIED. USE THIS MAP FOR GENERAL PLANNING PURPOSES ONLY.



1 inch = 100 feet

D

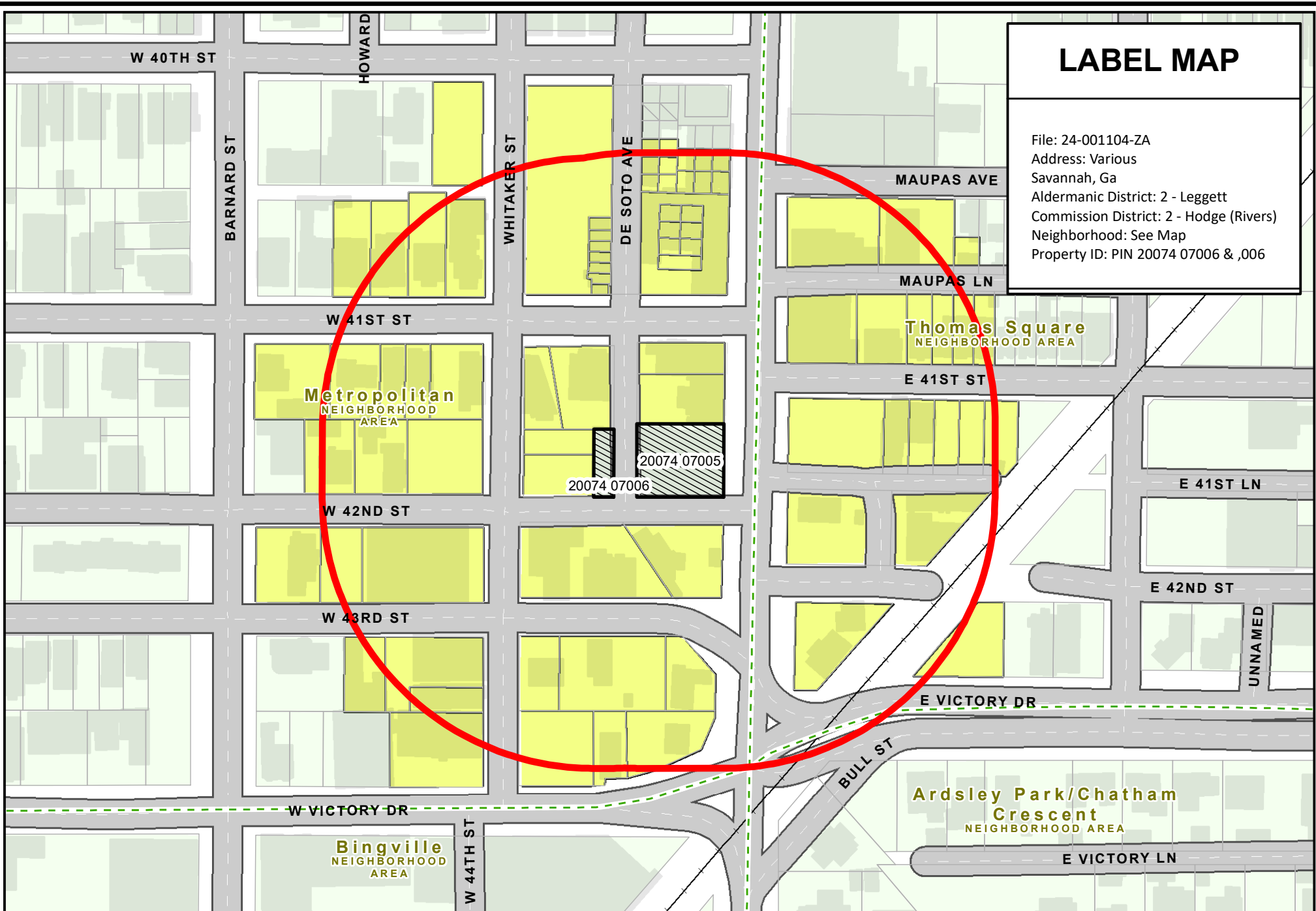


Date: 3/1/2024

CHATHAM COUNTY - SAVANNAH  
**METROPOLITAN PLANNING COMMISSION**  
110 E. STATE ST. SAVANNAH, GA 31412-8246 PHONE 912-651-1440

# LABEL MAP

File: 24-001104-ZA  
Address: Various  
Savannah, Ga  
Aldermanic District: 2 - Leggett  
Commission District: 2 - Hodge (Rivers)  
Neighborhood: See Map  
Property ID: PIN 20074 07006 & ,006



THIS MAP IS A COMPILATION OF INFORMATION FROM VARIOUS SOURCES AND SCALES. IN MOST CASES THE INFORMATION HAS NOT BEEN FIELD VERIFIED.  
**USE THIS MAP FOR GENERAL PLANNING PURPOSES ONLY.**



Date: 2/29/2024

1 inch = 150 feet



CHATHAM COUNTY - SAVANNAH  
**METROPOLITAN PLANNING COMMISSION**  
110 E. STATE ST. SAVANNAH, GA 31412-8246 PHONE 912-651-1440