

AERIAL MAP

File: 25-005241-ZA
Address: 4700 Waters Ave.
Savannah, Ga
Aldermanic District: 3 - Wilder-Bryan
Commission District: 2 - Hodge
Neighborhood: See Map
Property ID: Multiple (see petition file)

NOTES:

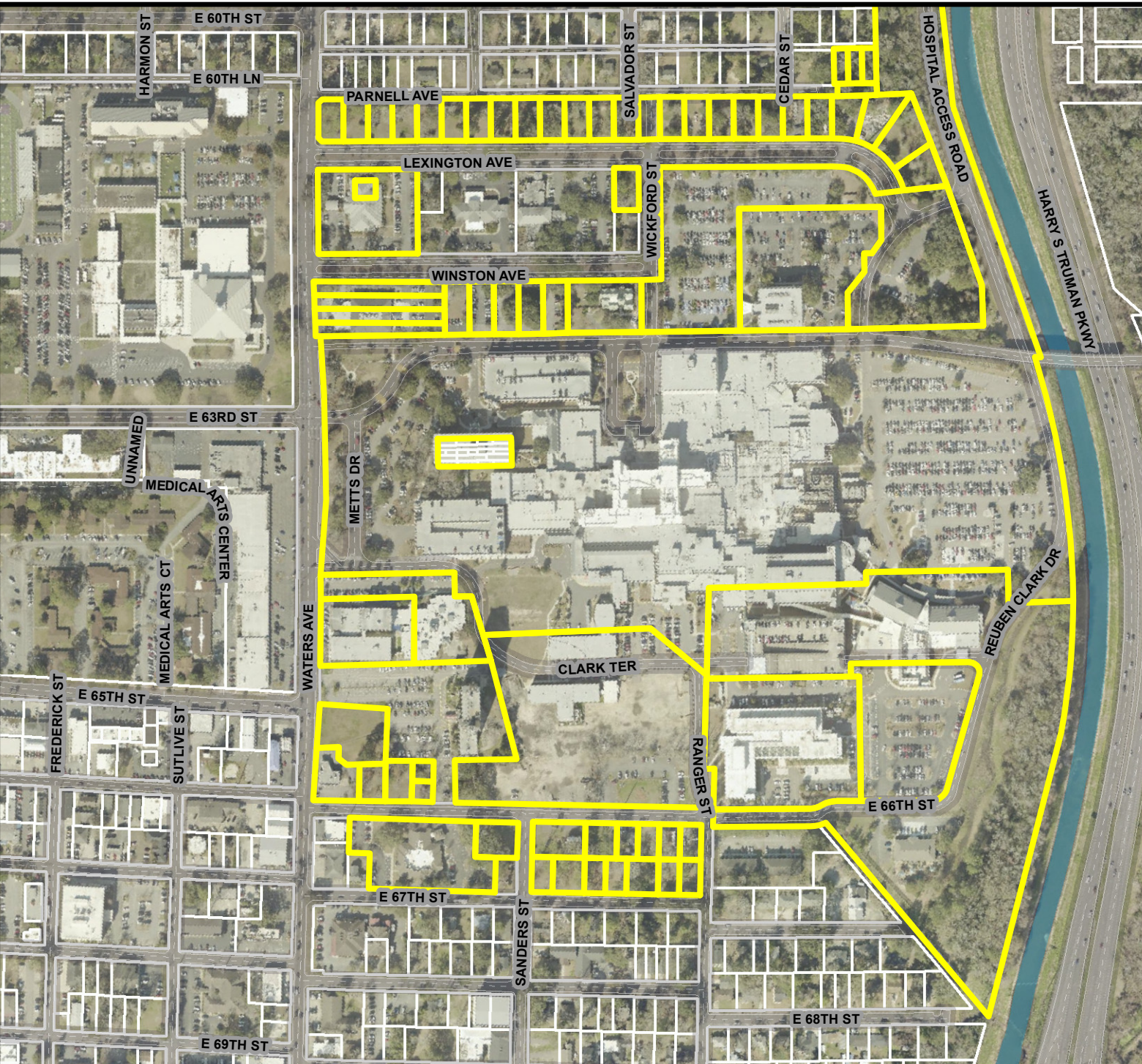
See original petition file for more details regarding specific petition property boundary delineations

* Newly annexed parcels may need Aldermanic & County Commission District determination

Date: 10/30/2025



CHATHAM COUNTY - SAVANNAH
METROPOLITAN PLANNING COMMISSION
110 E. STATE ST. SAVANNAH, GA 31412-8246 PHONE 912-651-1440



THIS MAP IS A COMPILATION OF INFORMATION FROM VARIOUS SOURCES AND SCALES. IN MOST CASES THE INFORMATION HAS NOT BEEN FIELD VERIFIED. USE THIS MAP FOR GENERAL PLANNING PURPOSES ONLY.



1 inch = 400 feet

D

FUTURE LAND USE

File: 25-005241-ZA
Address: 4700 Waters Ave.
Savannah, Ga
Aldermanic District: 3 - Wilder-Bryan
Commission District: 2 - Hodge
Neighborhood: See Map
Property ID: Multiple (see petition file)

NOTES:

See original petition file for more details regarding specific petition property boundary delineations

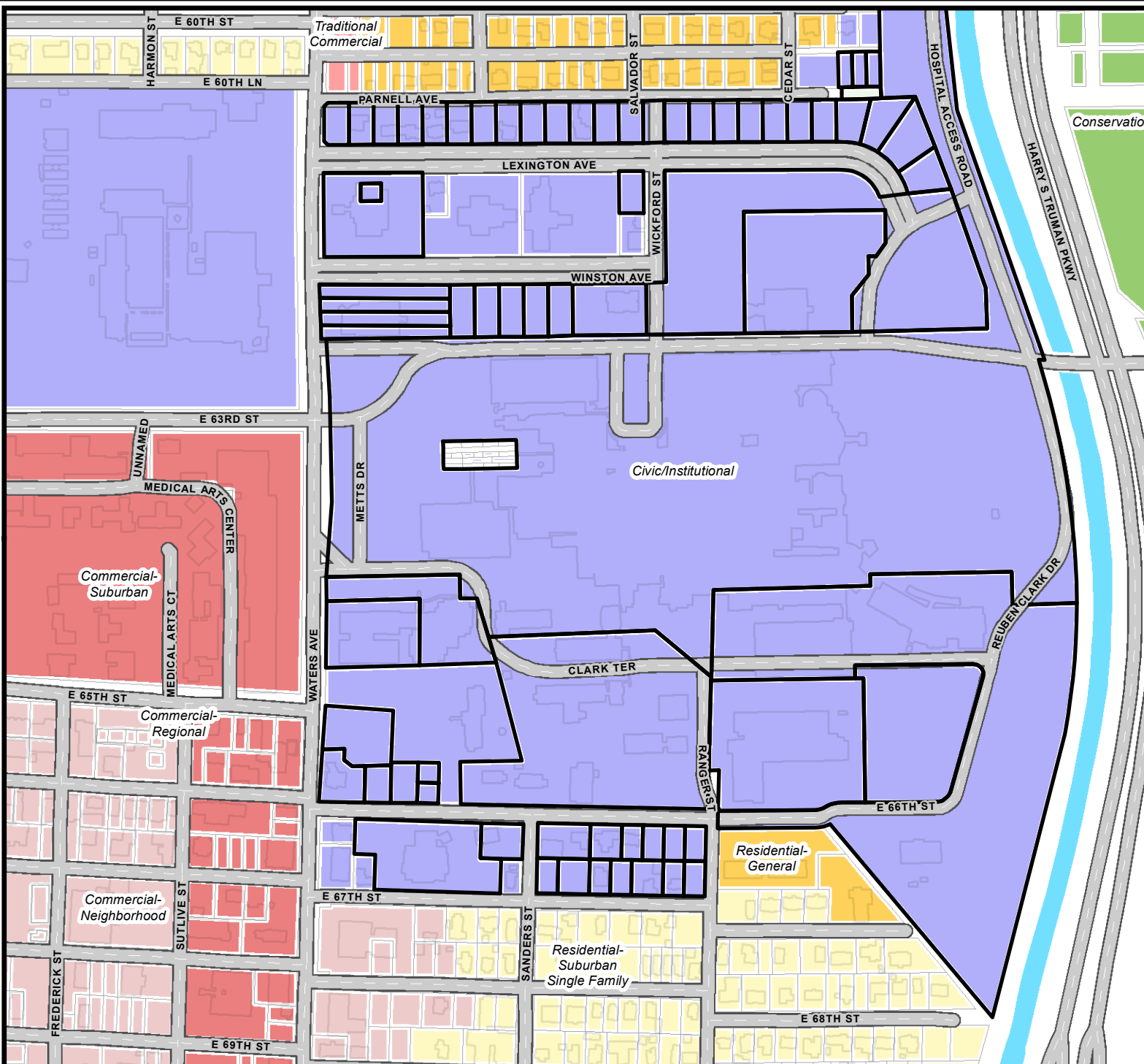
* Newly annexed parcels may need Aldermanic & County Commission District determination

- Traditional Commercial
- Commercial- Neighborhood
- Commercial- Suburban
- Commercial- Regional
- Residential- Suburban Single Family
- Residential- General
- Civic/Institutional
- Conservation

Date: 10/30/2025



CHATHAM COUNTY - SAVANNAH
METROPOLITAN PLANNING COMMISSION
110 E. STATE ST. SAVANNAH, GA 31412-8246 PHONE 912-651-1440



THIS MAP IS A COMPILATION OF INFORMATION FROM VARIOUS SOURCES AND SCALES. IN MOST CASES THE INFORMATION HAS NOT BEEN FIELD VERIFIED. USE THIS MAP FOR GENERAL PLANNING PURPOSES ONLY.



1 inch = 400 feet

D

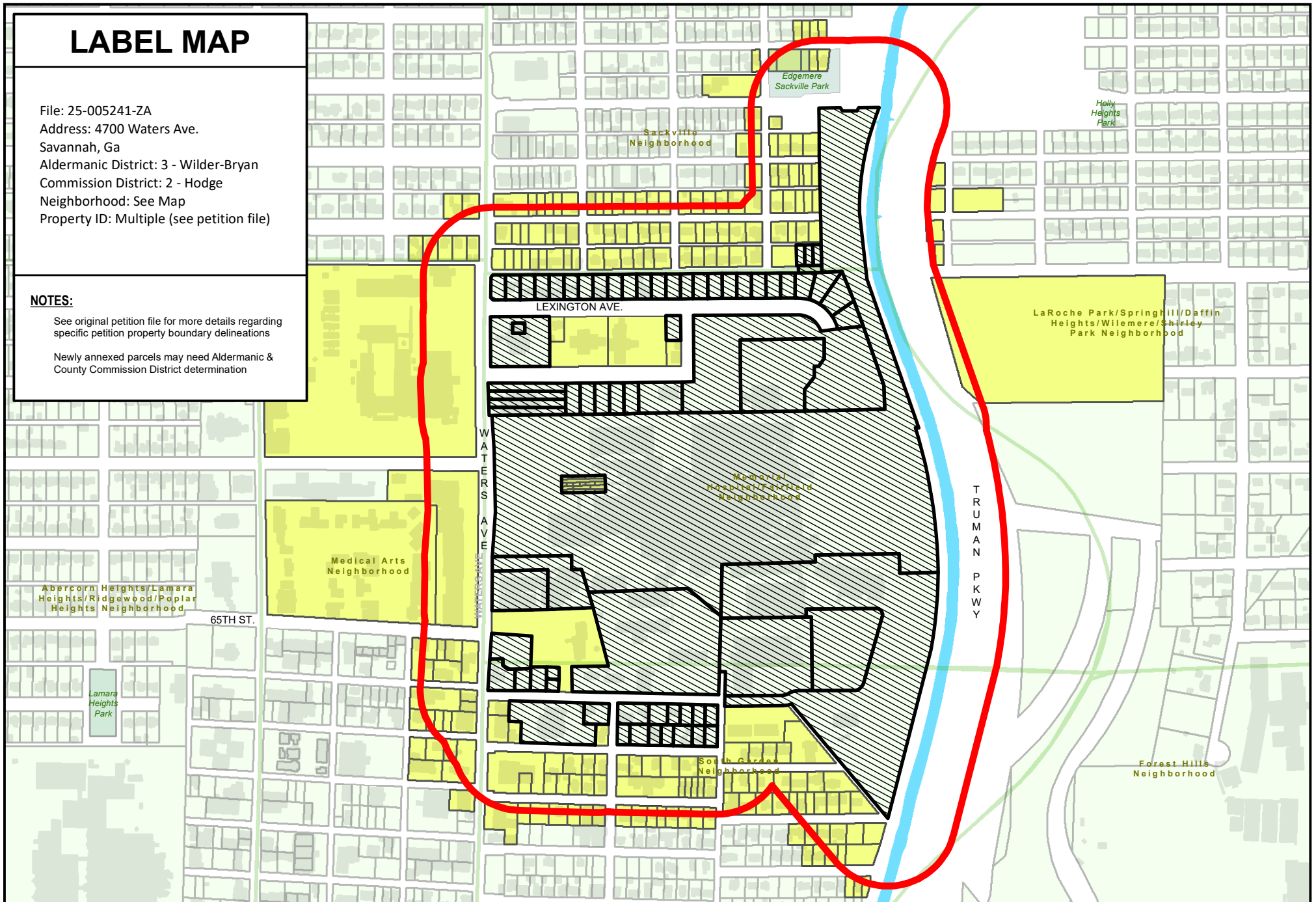
LABEL MAP

File: 25-005241-ZA
Address: 4700 Waters Ave.
Savannah, Ga
Aldermanic District: 3 - Wilder-Bryan
Commission District: 2 - Hodge
Neighborhood: See Map
Property ID: Multiple (see petition file)

NOTES:

See original petition file for more details regarding specific petition property boundary delineations

Newly annexed parcels may need Aldermanic & County Commission District determination



THIS MAP IS A COMPILATION OF INFORMATION FROM VARIOUS SOURCES AND SCALES. IN MOST CASES THE INFORMATION HAS NOT BEEN FIELD VERIFIED.
USE THIS MAP FOR GENERAL PLANNING PURPOSES ONLY.



Date: 10/30/2025

1 inch = 600 feet



CHATHAM COUNTY - SAVANNAH

METROPOLITAN PLANNING COMMISSION

110 E. STATE ST. SAVANNAH, GA 31412-8246 PHONE 912-651-1440

File: 25-005241-ZA
Address: 4700 Waters Ave.
Savannah, Ga
Aldermanic District: 3 - Wilder-Bryan
Commission District: 2 - Hodge
Neighborhood: See Map
Property ID: Multiple (see petition file)

File: 25-005241-ZA
Address: 4700 Waters Ave.
Savannah, Ga
Aldermanic District: 3 - Wilder-Bryan
Commission District: 2 - Hodge
Neighborhood: See Map
Property ID: Multiple (see petition file)

See original petition file for more details regarding specific petition property boundary delineations

* Newly annexed parcels may need Aldermanic & County Commission District determination

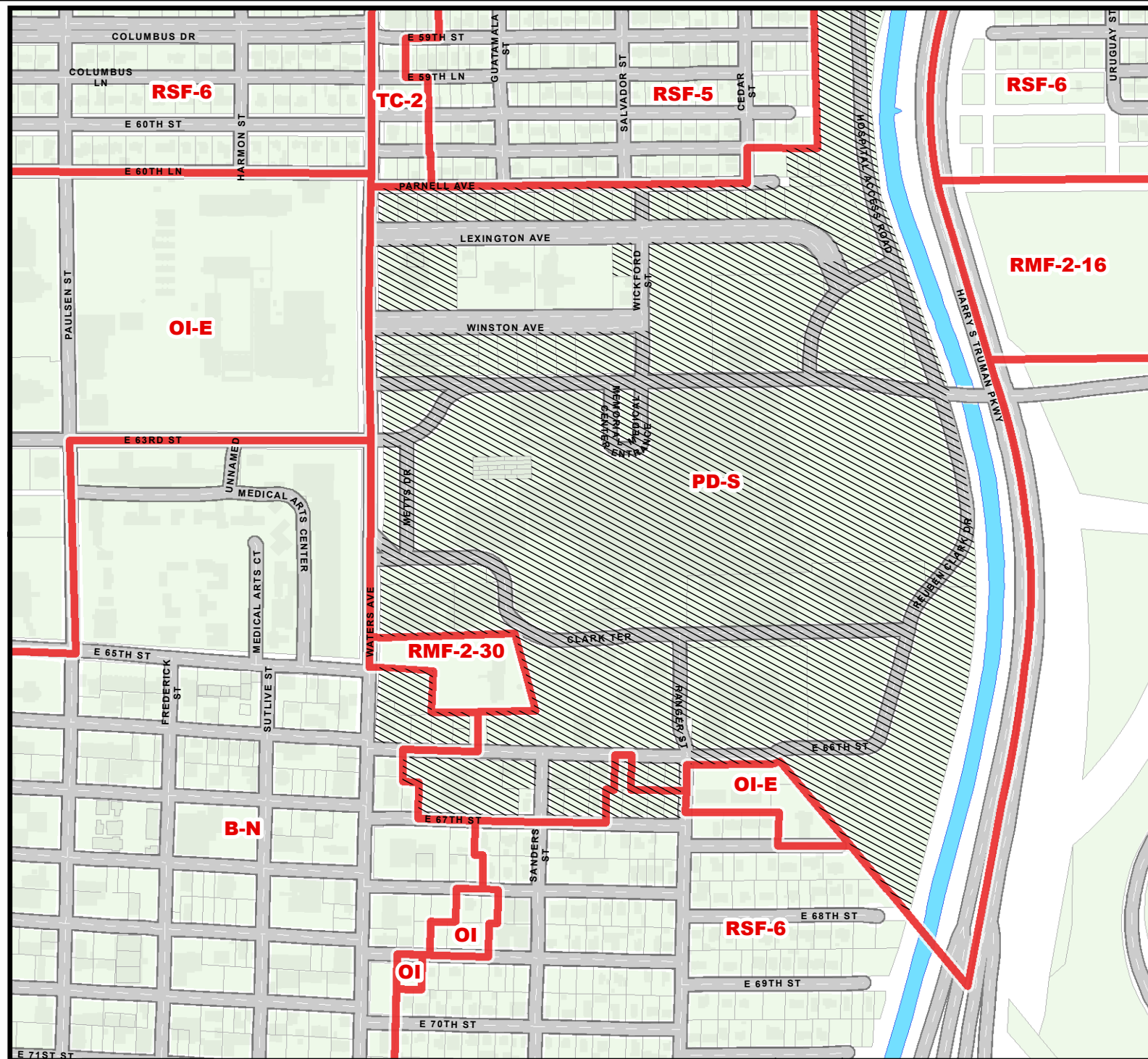
The seal of the Metropolitan Planning Council (MPC) is a circular emblem. It features the text "METROPOLITAN PLANNING COUNCIL" around the top inner edge and "CHICAGO COUNTY, ILLINOIS" around the bottom inner edge. In the center, the letters "mpc" are written in a bold, lowercase, sans-serif font.

CHATHAM COUNTY - SAVANNAH
METROPOLITAN PLANNING COMMISSION
 110 E. STATE ST. SAVANNAH, GA 31412-8246 PHONE 912-651-1440

THIS MAP IS A COMPILATION OF INFORMATION FROM VARIOUS SOURCES AND SCALES. IN MOST CASES THE INFORMATION HAS NOT BEEN FIELD VERIFIED. USE THIS MAP FOR GENERAL PLANNING PURPOSES ONLY.



1 inch = 2,000 feet



ZONING MAP

WITH TAX PARCELS

File: 25-005241-ZA
Address: 4700 Waters Ave.
Savannah, Ga
Aldermanic District: 3 - Wilder-Bryan
Commission District: 2 - Hodge
Neighborhood: See Map
Property ID: Multiple (see petition file)

NOTES:

See original petition file for more details regarding specific petition property boundary delineations

* Newly annexed parcels may need Aldermanic & County Commission District determination

 ZONING

Date: 10/30/2025



CHATHAM COUNTY - SAVANNAH
METROPOLITAN PLANNING COMMISSION
110 E. STATE ST. SAVANNAH, GA 31412-8246 PHONE 912-651-1440

THIS MAP IS A COMPILATION OF INFORMATION FROM VARIOUS SOURCES AND SCALES. IN MOST CASES THE INFORMATION HAS NOT BEEN FIELD VERIFIED. USE THIS MAP FOR GENERAL PLANNING PURPOSES ONLY.



1 inch = 500 feet