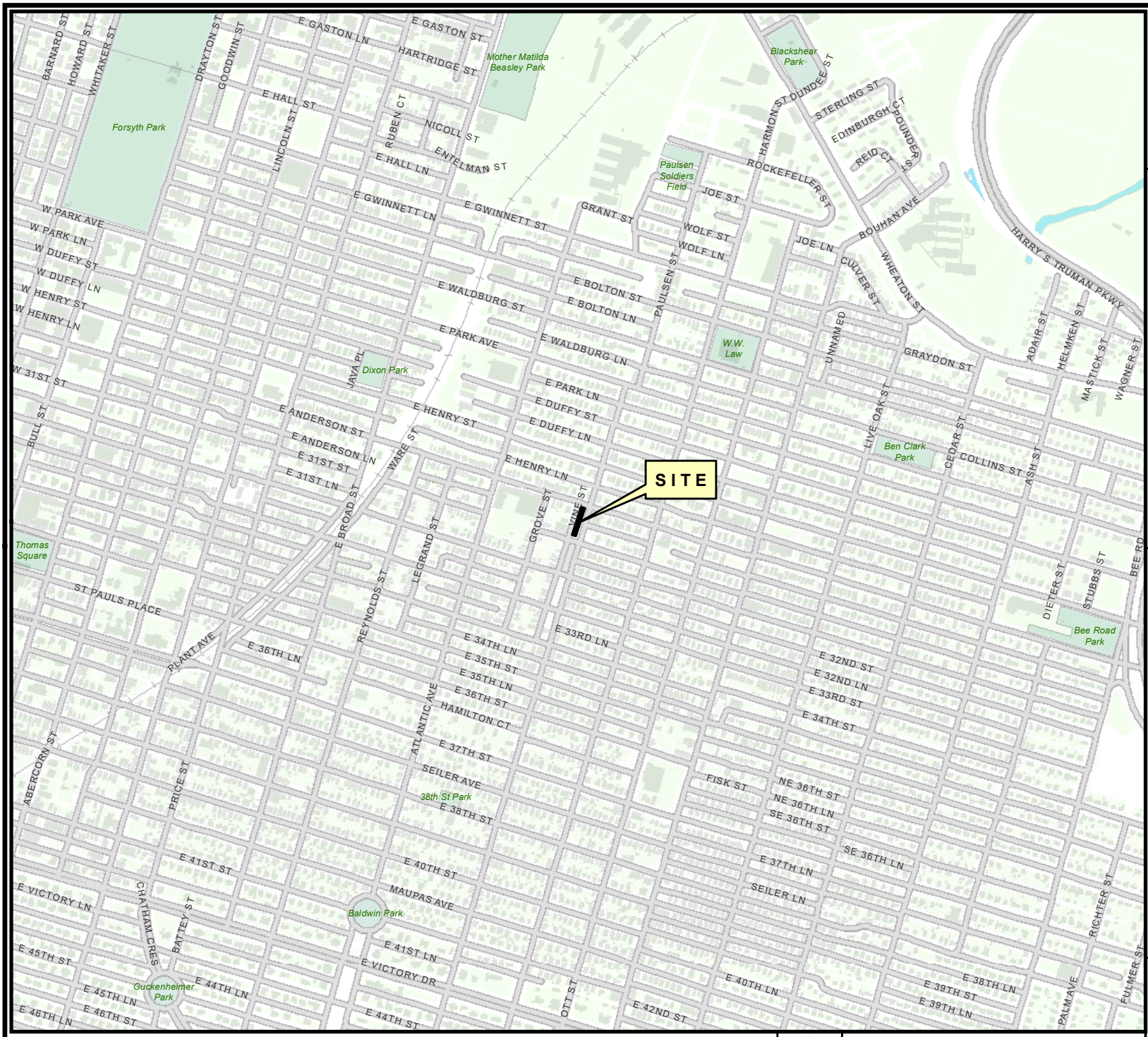


VICINITY MAP

File: 22-005905-ZA
Address: 1401 Paulsen Street
Savannah, Ga
Aldermanic District: 2 - Leggett
Commission District: 2 - Rivers
Neighborhood: See Map
Property ID: See Map

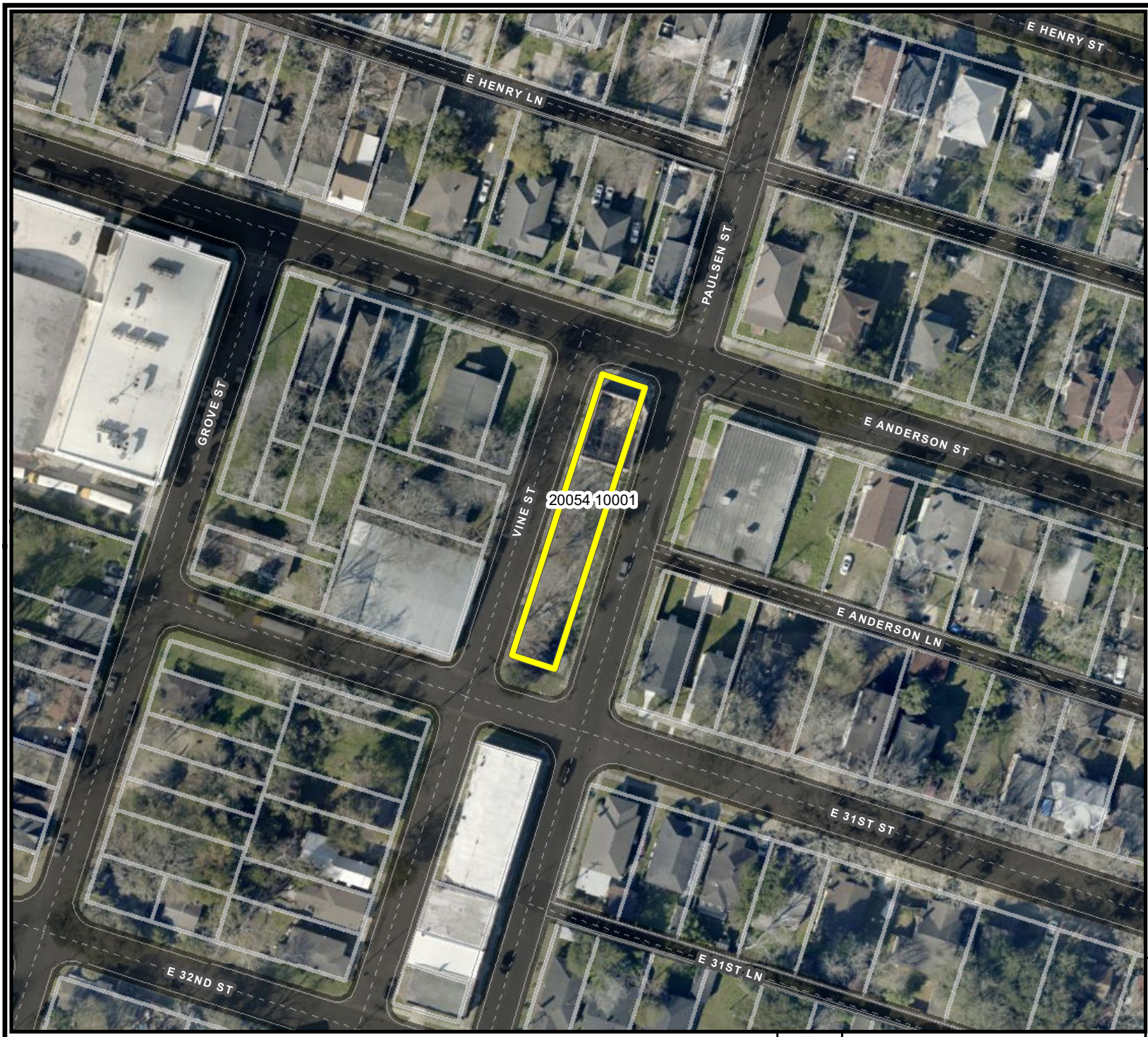


SITE

THIS MAP IS A COMPILATION OF INFORMATION FROM VARIOUS SOURCES AND SCALES. IN MOST CASES THE INFORMATION HAS NOT BEEN FIELD VERIFIED. USE THIS MAP FOR GENERAL PLANNING PURPOSES ONLY.



1 inch = 1,000 feet



AERIAL MAP

File: 22-005905-ZA
Address: 1401 Paulsen Street
Savannah, Ga
Aldermanic District: 2 - Leggett
Commission District: 2 - Rivers
Neighborhood: See Map
Property ID: See Map

20054 10001

Date: 12/22/2022



CHATHAM COUNTY - SAVANNAH
METROPOLITAN PLANNING COMMISSION
110 E. STATE ST. SAVANNAH, GA 31412-8246 PHONE 912-651-1440

THIS MAP IS A COMPILATION OF INFORMATION FROM VARIOUS SOURCES AND SCALES. IN MOST CASES THE INFORMATION HAS NOT BEEN FIELD VERIFIED. USE THIS MAP FOR GENERAL PLANNING PURPOSES ONLY.



1 inch = 100 feet

D

TAX MAP

File: 22-005905-ZA
Address: 1401 Paulsen Street
Savannah, Ga
Aldermanic District: 2 - Leggett
Commission District: 2 - Rivers
Neighborhood: See Map
Property ID: See Map



THIS MAP IS A COMPILATION OF INFORMATION FROM VARIOUS SOURCES AND SCALES. IN MOST CASES THE INFORMATION HAS NOT BEEN FIELD VERIFIED. USE THIS MAP FOR GENERAL PLANNING PURPOSES ONLY.



1 inch = 100 feet



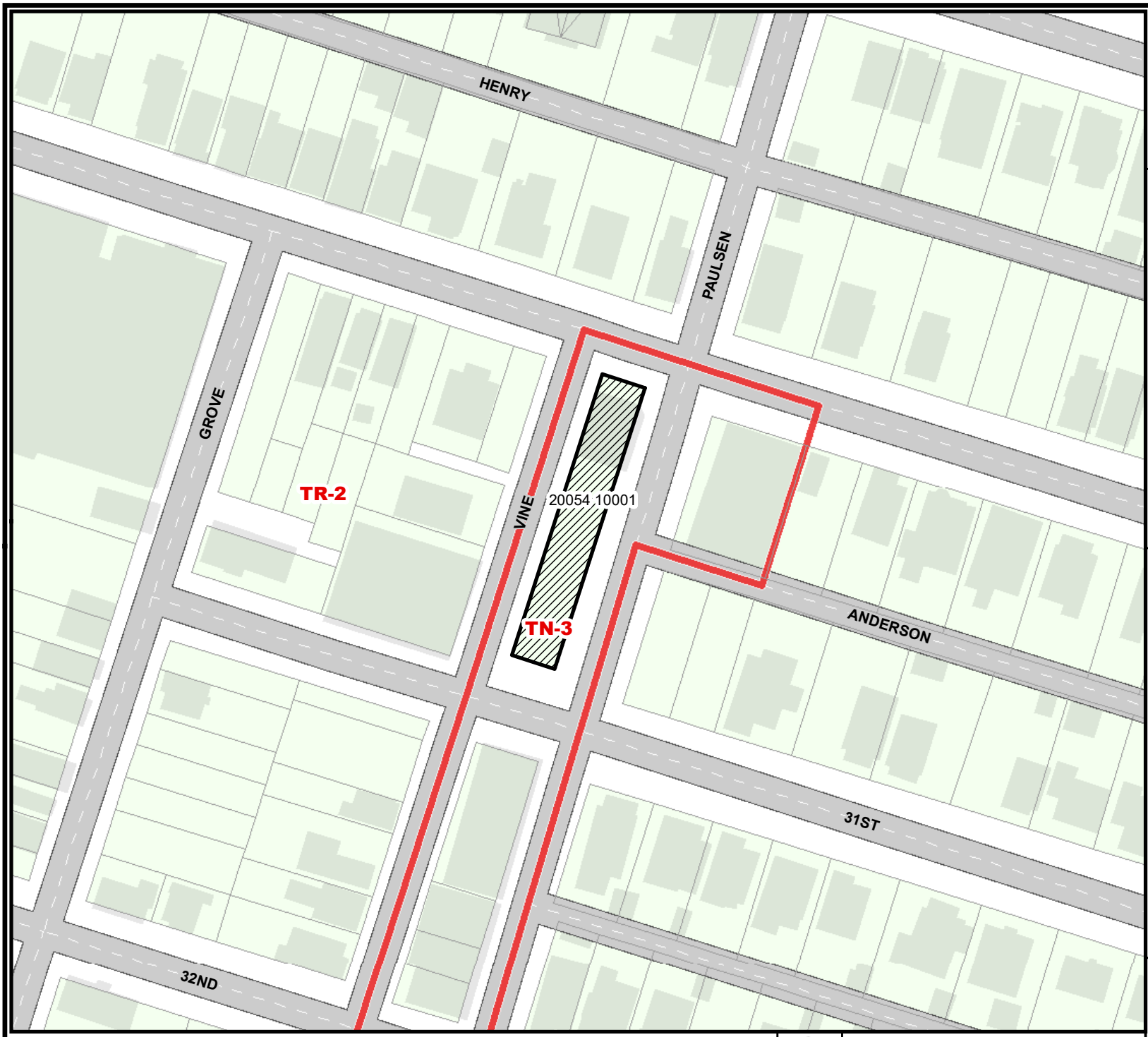
Date: 12/22/2022

CHATHAM COUNTY - SAVANNAH
METROPOLITAN PLANNING COMMISSION
110 E. STATE ST. SAVANNAH, GA 31412-8246 PHONE 912-651-1440

ZONING MAP

File: 22-005905-ZA
Address: 1401 Paulsen Street
Savannah, Ga
Aldermanic District: 2 - Leggett
Commission District: 2 - Rivers
Neighborhood: See Map
Property ID: See Map

Current Property Zoning
is Primarily
TN-3
Proposed Property Zoning:
TC-1



THIS MAP IS A COMPILATION OF INFORMATION FROM VARIOUS SOURCES AND SCALES. IN MOST CASES THE INFORMATION HAS NOT BEEN FIELD VERIFIED. USE THIS MAP FOR GENERAL PLANNING PURPOSES ONLY.



1 inch = 100 feet

D

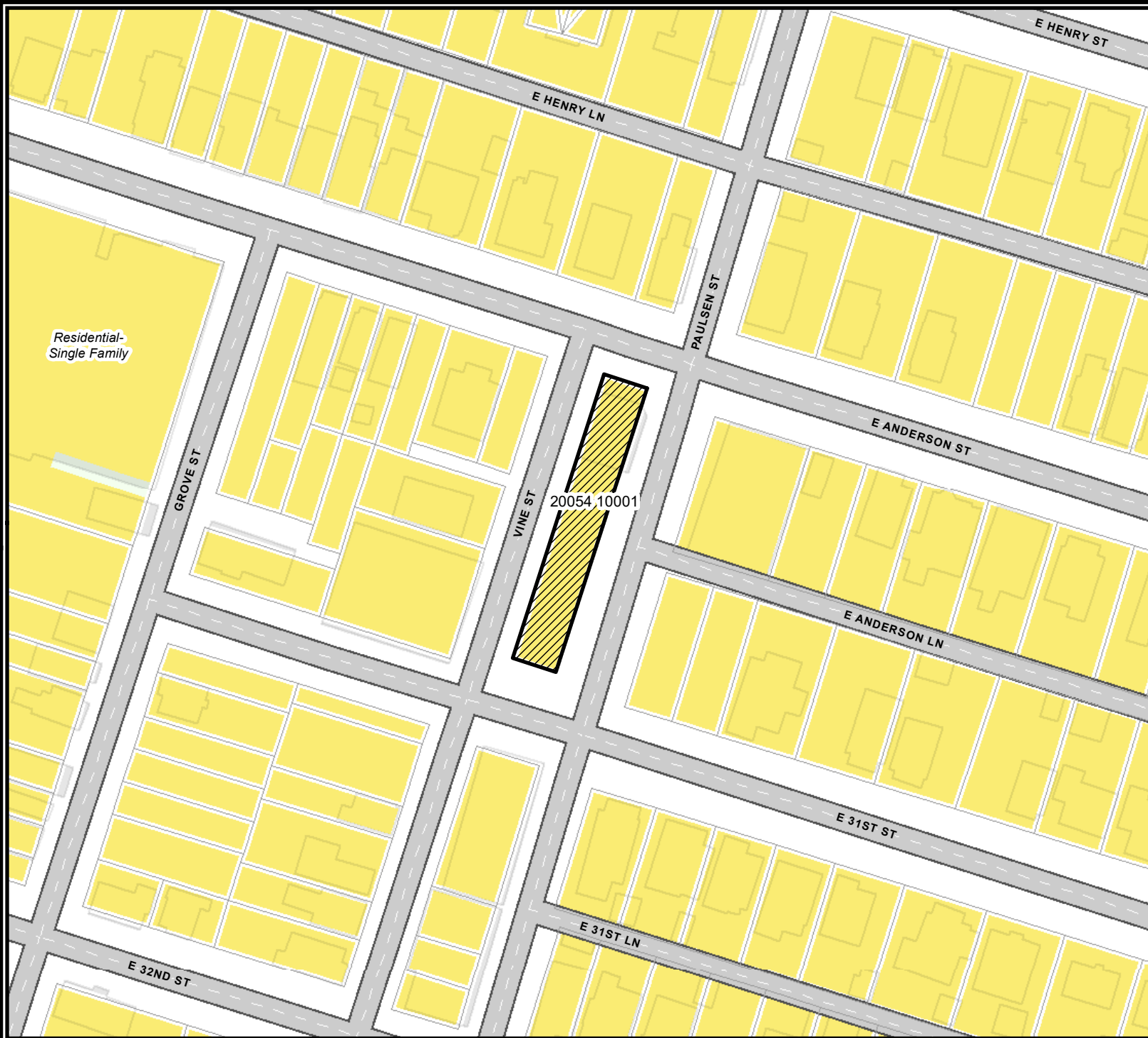


Date: 12/22/2022

CHATHAM COUNTY - SAVANNAH
METROPOLITAN PLANNING COMMISSION
110 E. STATE ST. SAVANNAH, GA 31412-8246 PHONE 912-651-1440

FUTURE LAND USE

File: 22-005905-ZA
Address: 1401 Paulsen Street
Savannah, Ga
Aldermanic District: 2 - Leggett
Commission District: 2 - Rivers
Neighborhood: See Map
Property ID: See Map



Residential- Single Family

Date: 12/22/2022



CHATHAM COUNTY - SAVANNAH
METROPOLITAN PLANNING COMMISSION
110 E. STATE ST. SAVANNAH, GA 31412-8246 PHONE 912-651-1440

THIS MAP IS A COMPILATION OF INFORMATION FROM VARIOUS SOURCES AND SCALES. IN MOST CASES THE INFORMATION HAS NOT BEEN FIELD VERIFIED. USE THIS MAP FOR GENERAL PLANNING PURPOSES ONLY.



1 inch = 100 feet

D