

AERIAL MAP

File: 25-004964-ZA (Zoning)
File: 25-004963-ZA (Land Use)
Address: 11750 Abercorn St.
Savannah, Ga
Aldermanic District: 6 - Purtee
Commission District: 6 - Whitely
Neighborhood: See Map
Property ID: 20755 01002

NOTES:

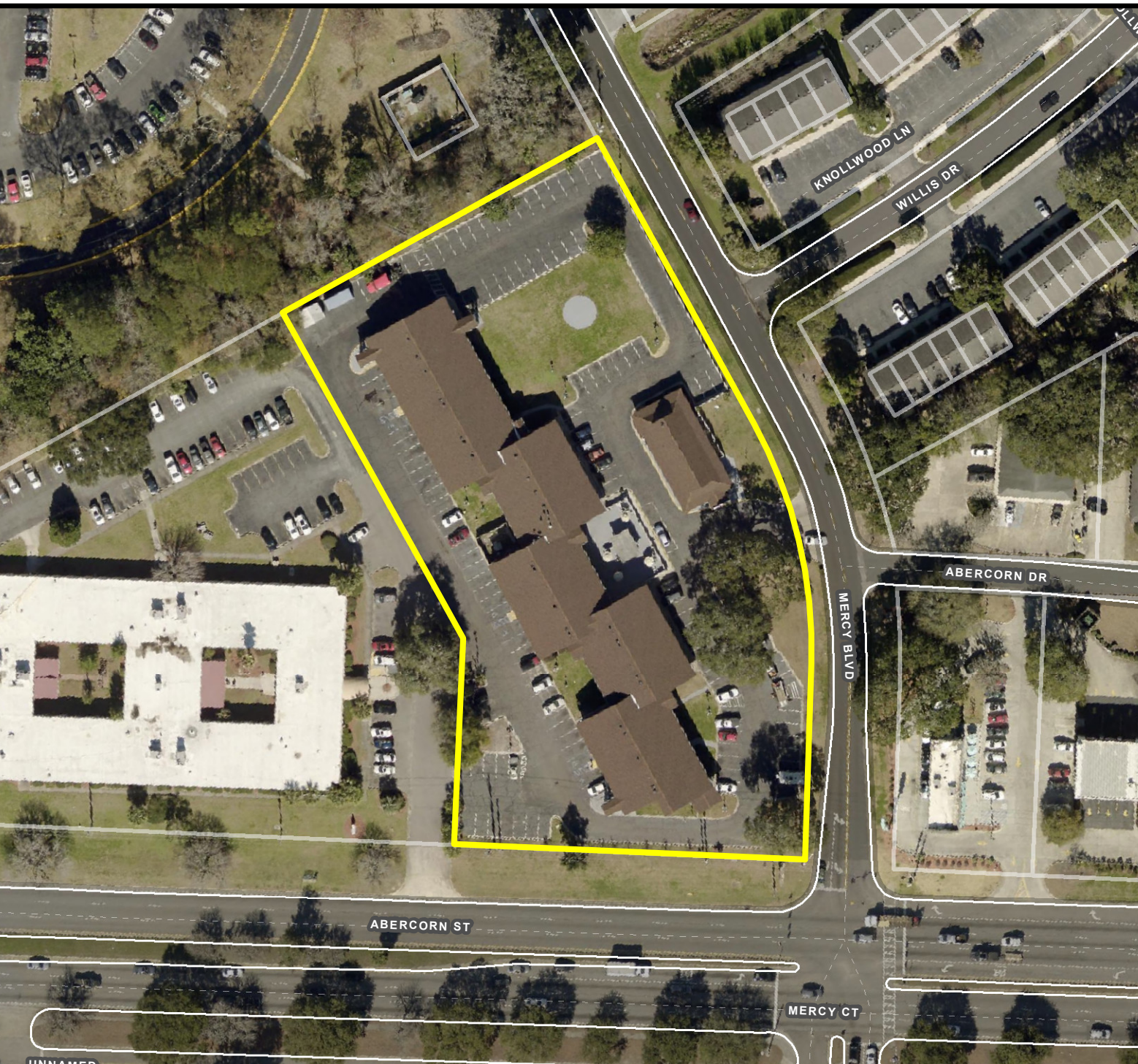
See original petition file for more details regarding specific petition property boundary delineations

* Newly annexed parcels may need Aldermanic & County Commission District determination

Date: 10/13/2025



CHATHAM COUNTY - SAVANNAH
METROPOLITAN PLANNING COMMISSION
110 E. STATE ST. SAVANNAH, GA 31412-8246 PHONE 912-651-1440



THIS MAP IS A COMPILATION OF INFORMATION FROM VARIOUS SOURCES AND SCALES. IN MOST CASES THE INFORMATION HAS NOT BEEN FIELD VERIFIED. USE THIS MAP FOR GENERAL PLANNING PURPOSES ONLY.



1 inch = 100 feet

FUTURE LAND USE

File: 25-004964-ZA (Zoning)
 File: 25-004963-ZA (Land Use)
 Address: 11750 Abercorn St.
 Savannah, Ga
 Aldermanic District: 6 - Purtee
 Commission District: 6 - Whitely
 Neighborhood: See Map
 Property ID: 20755 01002

NOTES:

See original petition file for more details regarding specific petition property boundary delineations

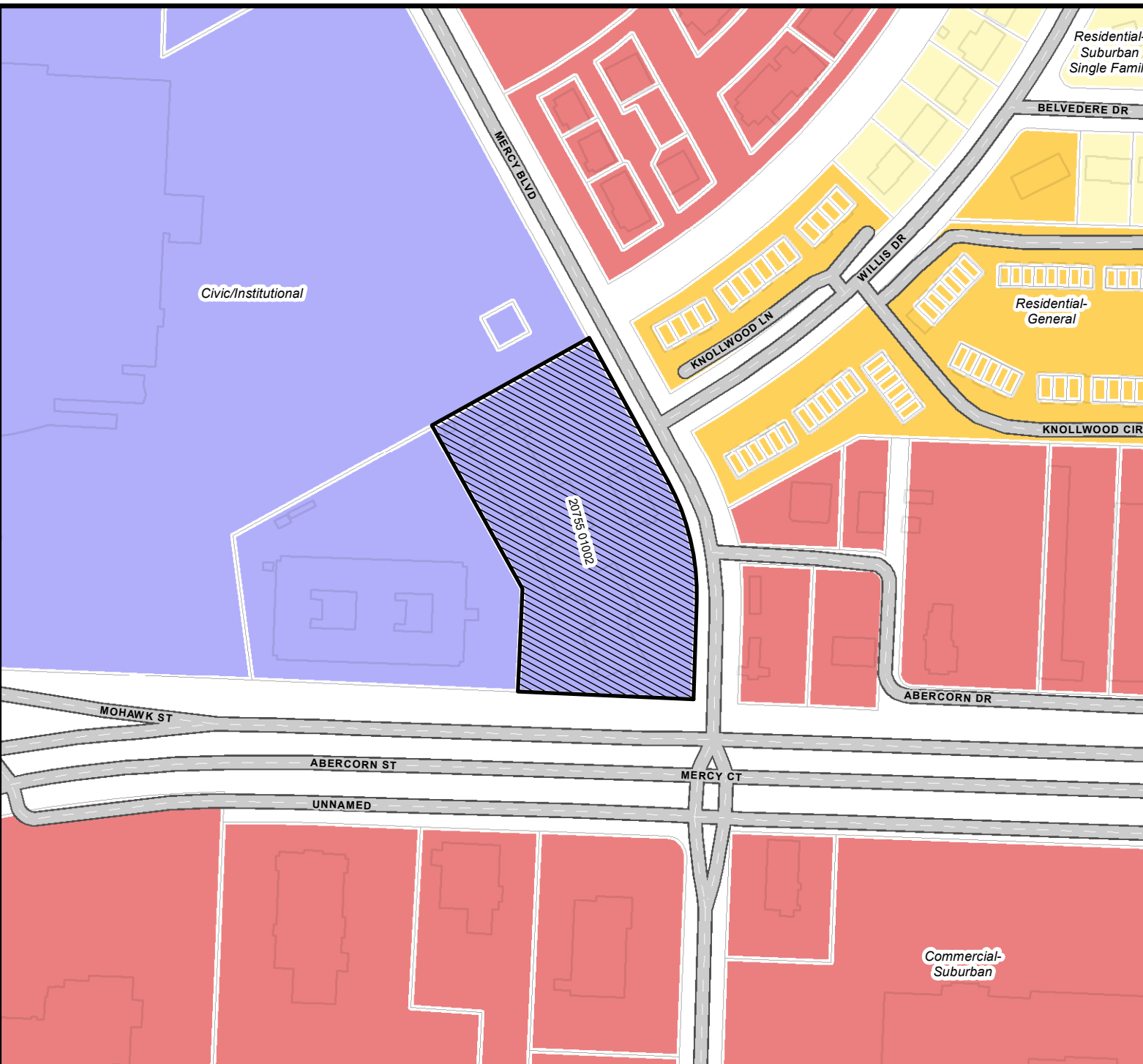
* Newly annexed parcels may need Aldermanic & County Commission District determination

Commercial- Suburban
 Residential- Suburban Single Family
 Residential- General
 Civic/Institutional

Date: 10/13/2025



CHATHAM COUNTY - SAVANNAH
METROPOLITAN PLANNING COMMISSION
 110 E. STATE ST. SAVANNAH, GA 31412-8246 PHONE 912-651-1440



THIS MAP IS A COMPILATION OF INFORMATION FROM VARIOUS SOURCES AND SCALES. IN MOST CASES THE INFORMATION HAS NOT BEEN FIELD VERIFIED. USE THIS MAP FOR GENERAL PLANNING PURPOSES ONLY.



1 inch = 200 feet

D

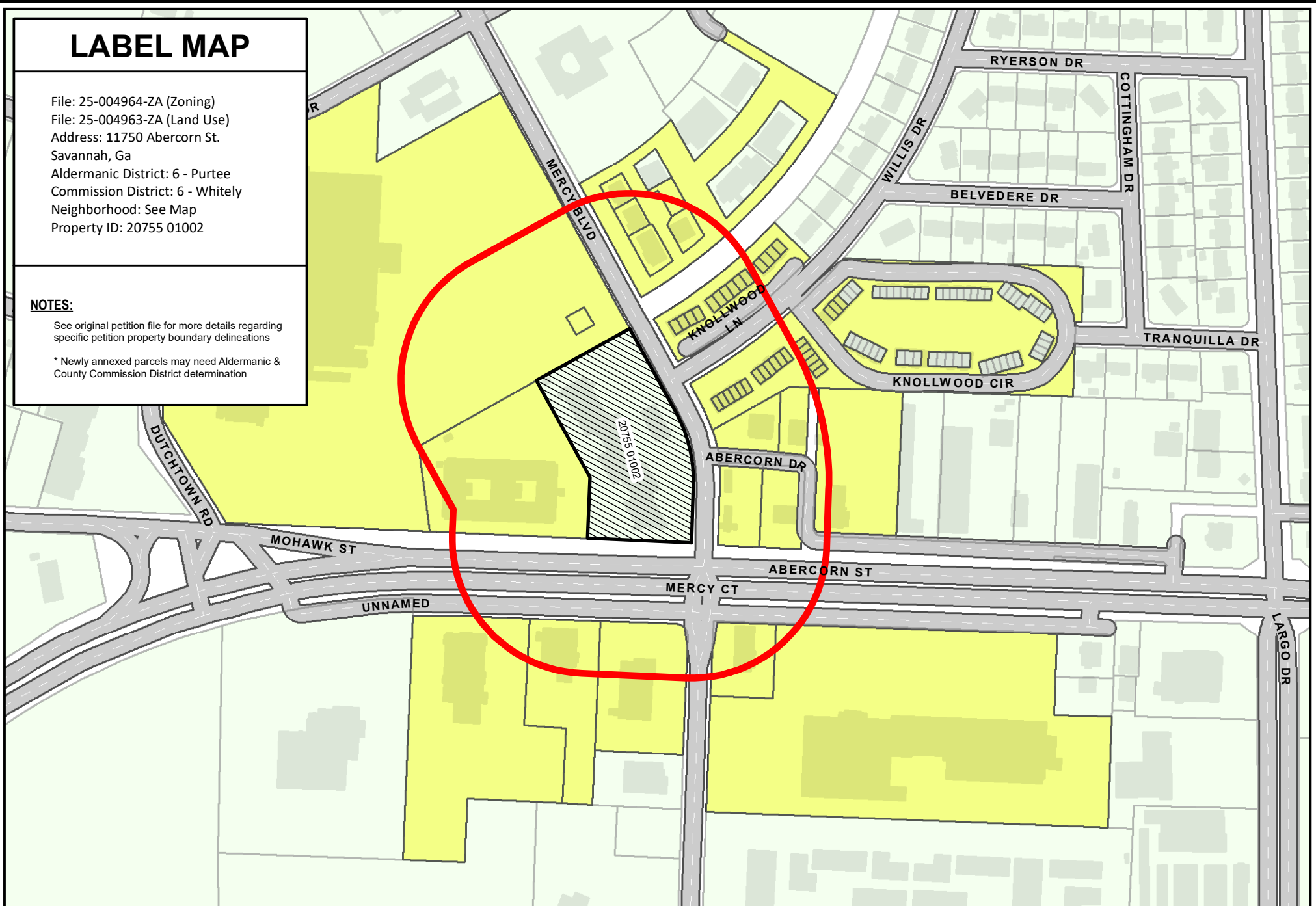
LABEL MAP

File: 25-004964-ZA (Zoning)
File: 25-004963-ZA (Land Use)
Address: 11750 Abercorn St.
Savannah, Ga
Aldermanic District: 6 - Purtee
Commission District: 6 - Whitely
Neighborhood: See Map
Property ID: 20755 01002

NOTES:

See original petition file for more details regarding specific petition property boundary delineations

* Newly annexed parcels may need Aldermanic & County Commission District determination



THIS MAP IS A COMPILATION OF INFORMATION FROM VARIOUS SOURCES AND SCALES. IN MOST CASES THE INFORMATION HAS NOT BEEN FIELD VERIFIED.
USE THIS MAP FOR GENERAL PLANNING PURPOSES ONLY.



Date: 10/13/2025

1 inch = 300 feet



CHATHAM COUNTY - SAVANNAH
METROPOLITAN PLANNING COMMISSION
110 E. STATE ST. SAVANNAH, GA 31412-8246 PHONE 912-651-1440

VICINITY MAP

File: 25-004964-ZA (Zoning)
File: 25-004963-ZA (Land Use)
Address: 11750 Abercorn St.
Savannah, Ga
Aldermanic District: 6 - Purtee
Commission District: 6 - Whitely
Neighborhood: See Map
Property ID: 20755 01002

NOTES:

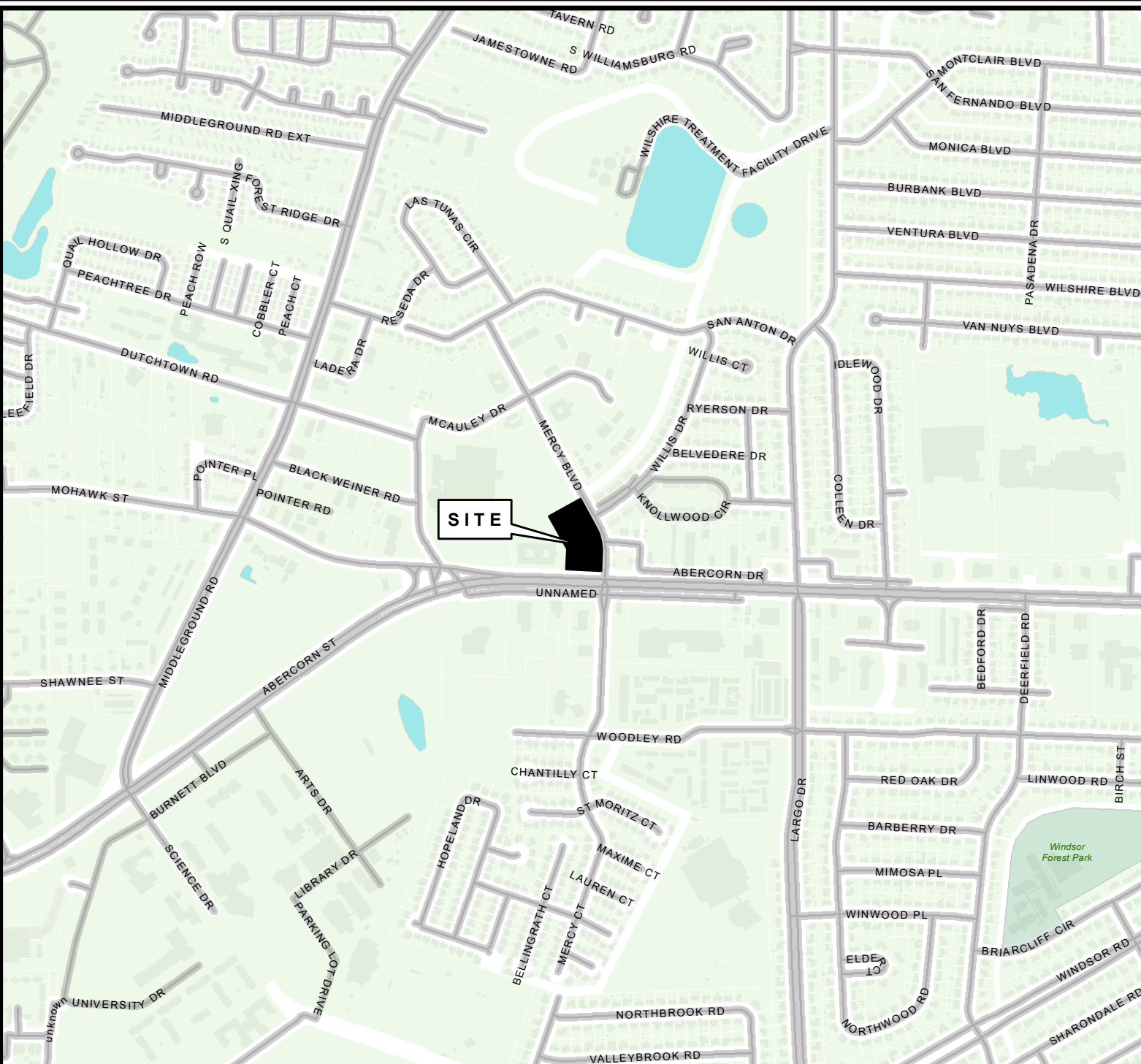
See original petition file for more details regarding specific petition property boundary delineations

* Newly annexed parcels may need Aldermanic & County Commission District determination

Date: 10/13/2025



CHATHAM COUNTY - SAVANNAH
METROPOLITAN PLANNING COMMISSION
110 E. STATE ST. SAVANNAH, GA 31412-8246 PHONE 912-651-1440



SITE

THIS MAP IS A COMPILATION OF INFORMATION FROM VARIOUS SOURCES AND SCALES. IN MOST CASES THE INFORMATION HAS NOT BEEN FIELD VERIFIED. USE THIS MAP FOR GENERAL PLANNING PURPOSES ONLY.



1 inch = 1,000 feet

D

ZONING MAP

WITH TAX PARCELS

File: 25-004964-ZA (Zoning)
File: 25-004963-ZA (Land Use)
Address: 11750 Abercorn St.
Savannah, Ga
Aldermanic District: 6 - Purtee
Commission District: 6 - Whitely
Neighborhood: See Map
Property ID: 20755 01002

NOTES:

See original petition file for more details regarding specific petition property boundary delineations

* Newly annexed parcels may need Aldermanic & County Commission District determination

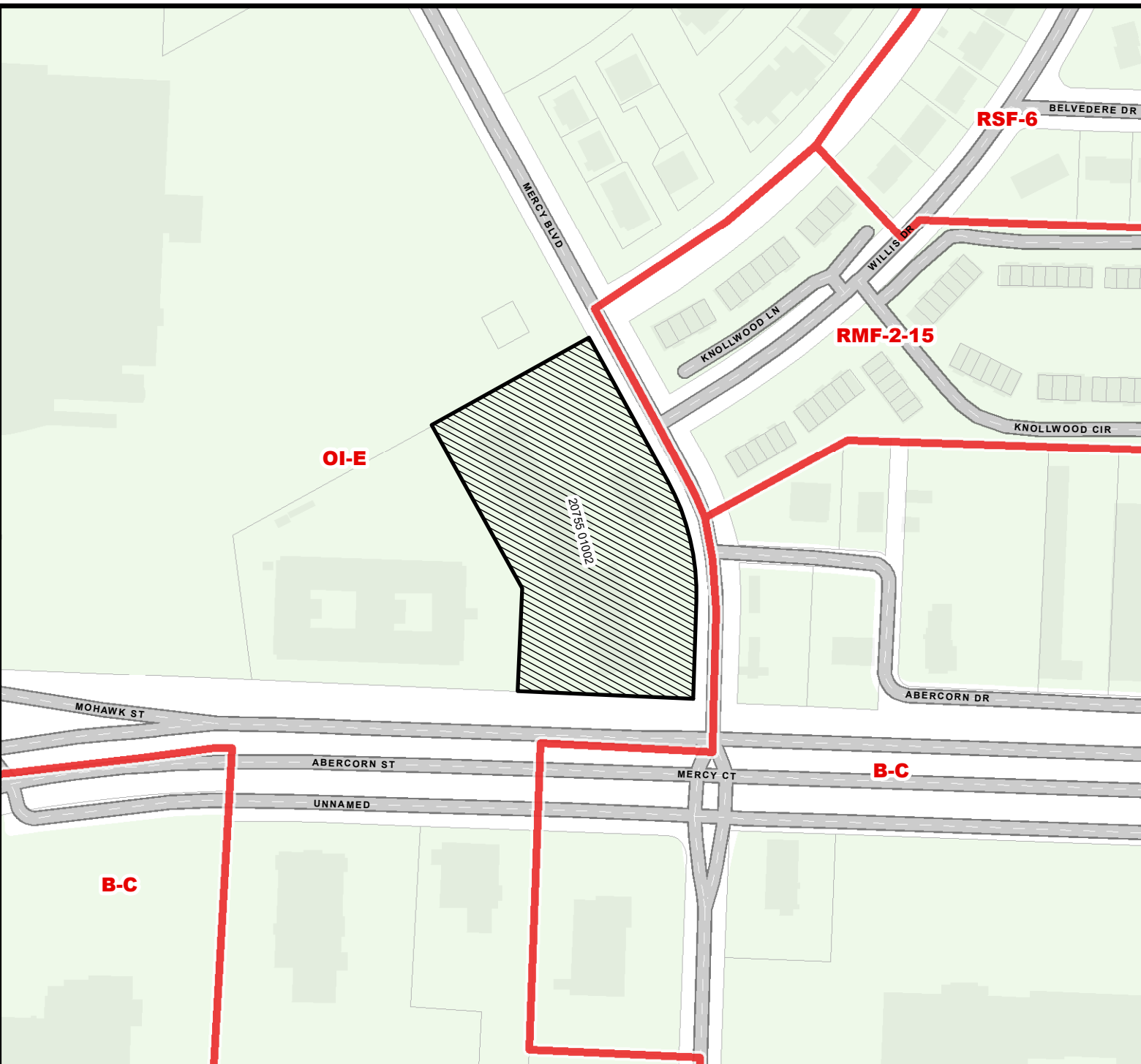


ZONING

Date: 10/13/2025



CHATHAM COUNTY - SAVANNAH
METROPOLITAN PLANNING COMMISSION
110 E. STATE ST. SAVANNAH, GA 31412-8246 PHONE 912-651-1440



THIS MAP IS A COMPILATION OF INFORMATION FROM VARIOUS SOURCES AND SCALES. IN MOST CASES THE INFORMATION HAS NOT BEEN FIELD VERIFIED. USE THIS MAP FOR GENERAL PLANNING PURPOSES ONLY.



1 inch = 200 feet

D