



# VICINITY MAP

File: 26-001606-ZA  
 Address: 11 W. Park Ave.  
 Savannah, Ga  
 Aldermanic District: 2 - Leggett  
 Commission District: 2 - Hodge  
 Neighborhood: See Map  
 Property ID: 20044 31013  
 Type: Zoning/Land Use

**NOTES:**  
 See original petition file for more details regarding specific petition property boundary delineations  
 \* Newly annexed parcels may need Aldermanic & County Commission District determination

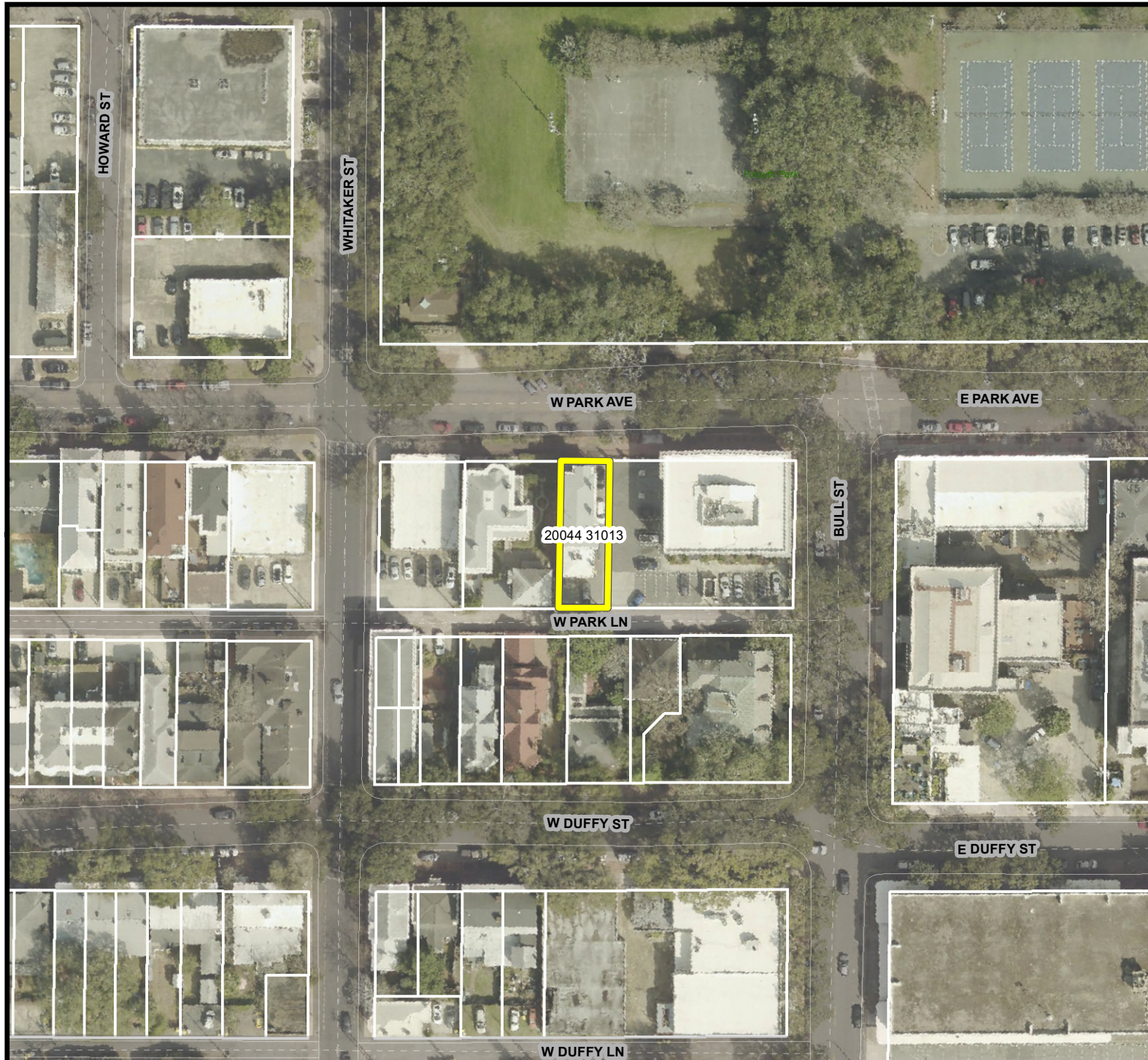
THIS MAP IS A COMPILATION OF INFORMATION FROM VARIOUS SOURCES AND SCALES. IN MOST CASES THE INFORMATION HAS NOT BEEN FIELD VERIFIED. USE THIS MAP FOR GENERAL PLANNING PURPOSES ONLY.



1 inch = 700 feet

# AERIAL MAP

File: 26-001606-ZA  
Address: 11 W. Park Ave.  
Savannah, Ga  
Aldermanic District: 2 - Leggett  
Commission District: 2 - Hodge  
Neighborhood: See Map  
Property ID: 20044 31013  
Type: Zoning/Land Use



## NOTES:

See original petition file for more details regarding specific petition property boundary delineations

\* Newly annexed parcels may need Aldermanic & County Commission District determination

THIS MAP IS A COMPILATION OF INFORMATION FROM VARIOUS SOURCES AND SCALES. IN MOST CASES THE INFORMATION HAS NOT BEEN FIELD VERIFIED. USE THIS MAP FOR GENERAL PLANNING PURPOSES ONLY.



1 inch = 100 feet

D

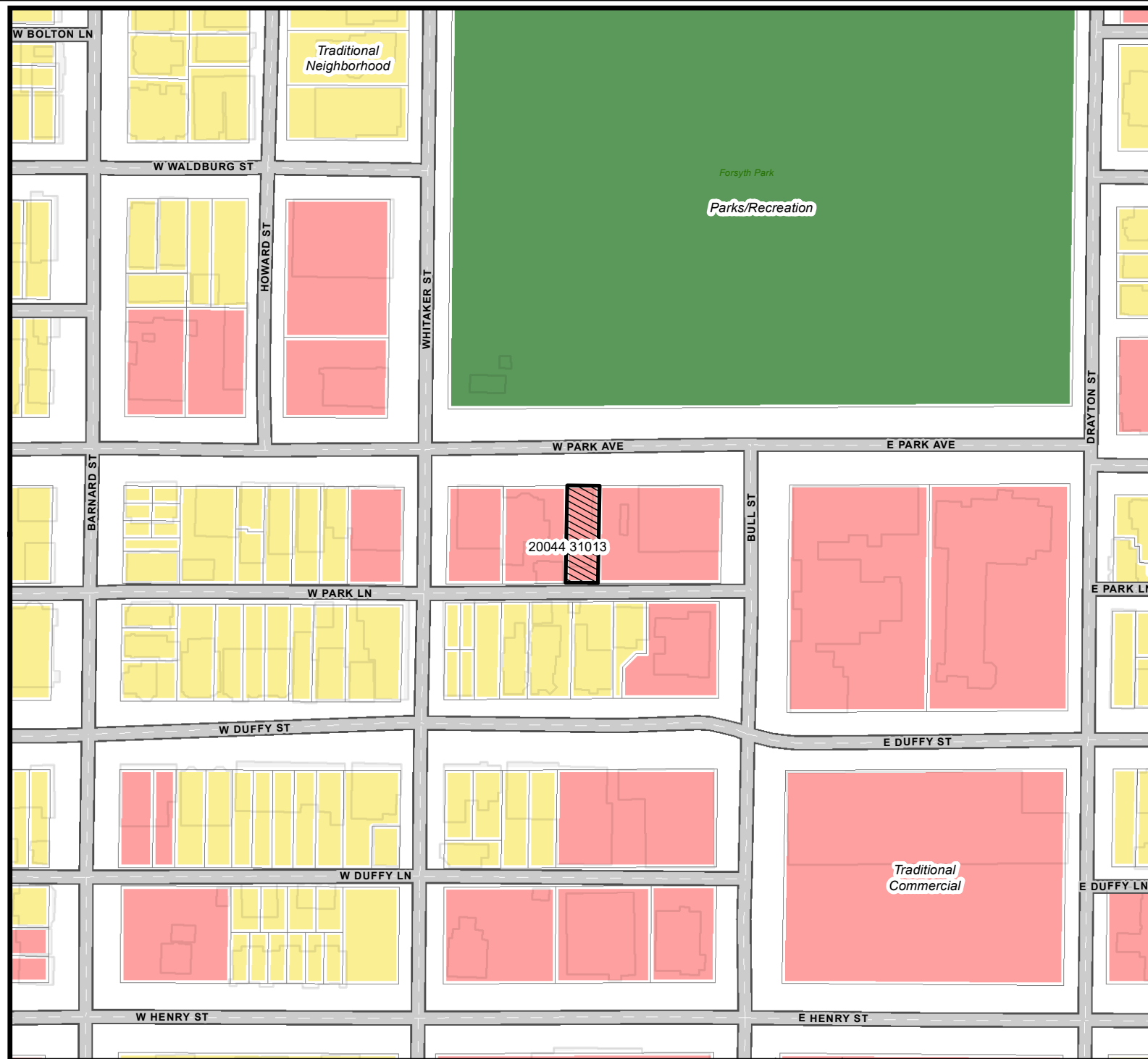


Date: 4/1/2026

CHATHAM COUNTY - SAVANNAH  
**METROPOLITAN PLANNING COMMISSION**  
110 E. STATE ST. SAVANNAH, GA 31412-8246 PHONE 912-651-1440

# FUTURE LAND USE

File: 26-001606-ZA  
 Address: 11 W. Park Ave.  
 Savannah, Ga  
 Aldermanic District: 2 - Leggett  
 Commission District: 2 - Hodge  
 Neighborhood: See Map  
 Property ID: 20044 31013  
 Type: Zoning/Land Use



**NOTES:**

See original petition file for more details regarding specific petition property boundary delineations

\* Newly annexed parcels may need Aldermanic & County Commission District determination

- Traditional Commercial
- Traditional Neighborhood
- Parks/Recreation

Date: 4/1/2026



CHATHAM COUNTY - SAVANNAH  
**METROPOLITAN PLANNING COMMISSION**  
 110 E. STATE ST. SAVANNAH, GA 31412-8246 PHONE 912-651-1440

THIS MAP IS A COMPILATION OF INFORMATION FROM VARIOUS SOURCES AND SCALES. IN MOST CASES THE INFORMATION HAS NOT BEEN FIELD VERIFIED. USE THIS MAP FOR GENERAL PLANNING PURPOSES ONLY.



1 inch = 150 feet

D

# ZONING MAP

WITH TAX PARCELS

File: 26-001606-ZA  
Address: 11 W. Park Ave.  
Savannah, Ga  
Aldermanic District: 2 - Leggett  
Commission District: 2 - Hodge  
Neighborhood: See Map  
Property ID: 20044 31013  
Type: Zoning/Land Use

### NOTES:

See original petition file for more details regarding specific petition property boundary delineations

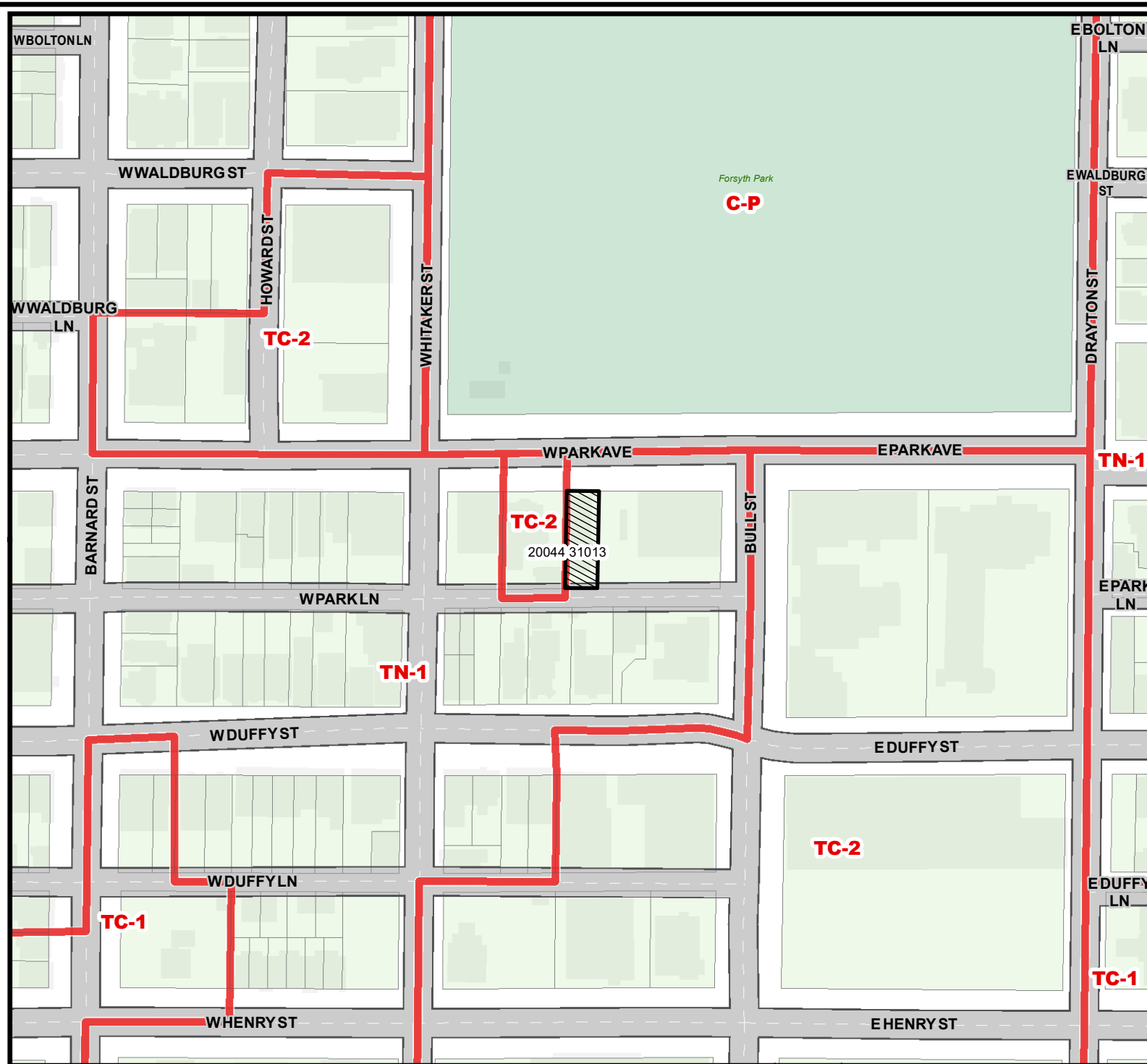
\* Newly annexed parcels may need Aldermanic & County Commission District determination

 ZONING

Date: 4/1/2026



CHATHAM COUNTY - SAVANNAH  
**METROPOLITAN PLANNING COMMISSION**  
110 E. STATE ST. SAVANNAH, GA 31412-8246 PHONE 912-651-1440



THIS MAP IS A COMPILATION OF INFORMATION FROM VARIOUS SOURCES AND SCALES. IN MOST CASES THE INFORMATION HAS NOT BEEN FIELD VERIFIED. USE THIS MAP FOR GENERAL PLANNING PURPOSES ONLY.



1 inch = 150 feet

D