

# AERIAL MAP

File: 25-003170-ZA (Zoning)  
File: 25-003226-ZA (Land Use)  
Address: 1103 E. 69th St.  
Savannah, Ga  
Aldermanic District: 3 - Wilder-Bryan  
Commission District: 2 - Hodge  
Neighborhood: See Map  
Property ID: 20114 19002

## NOTES:

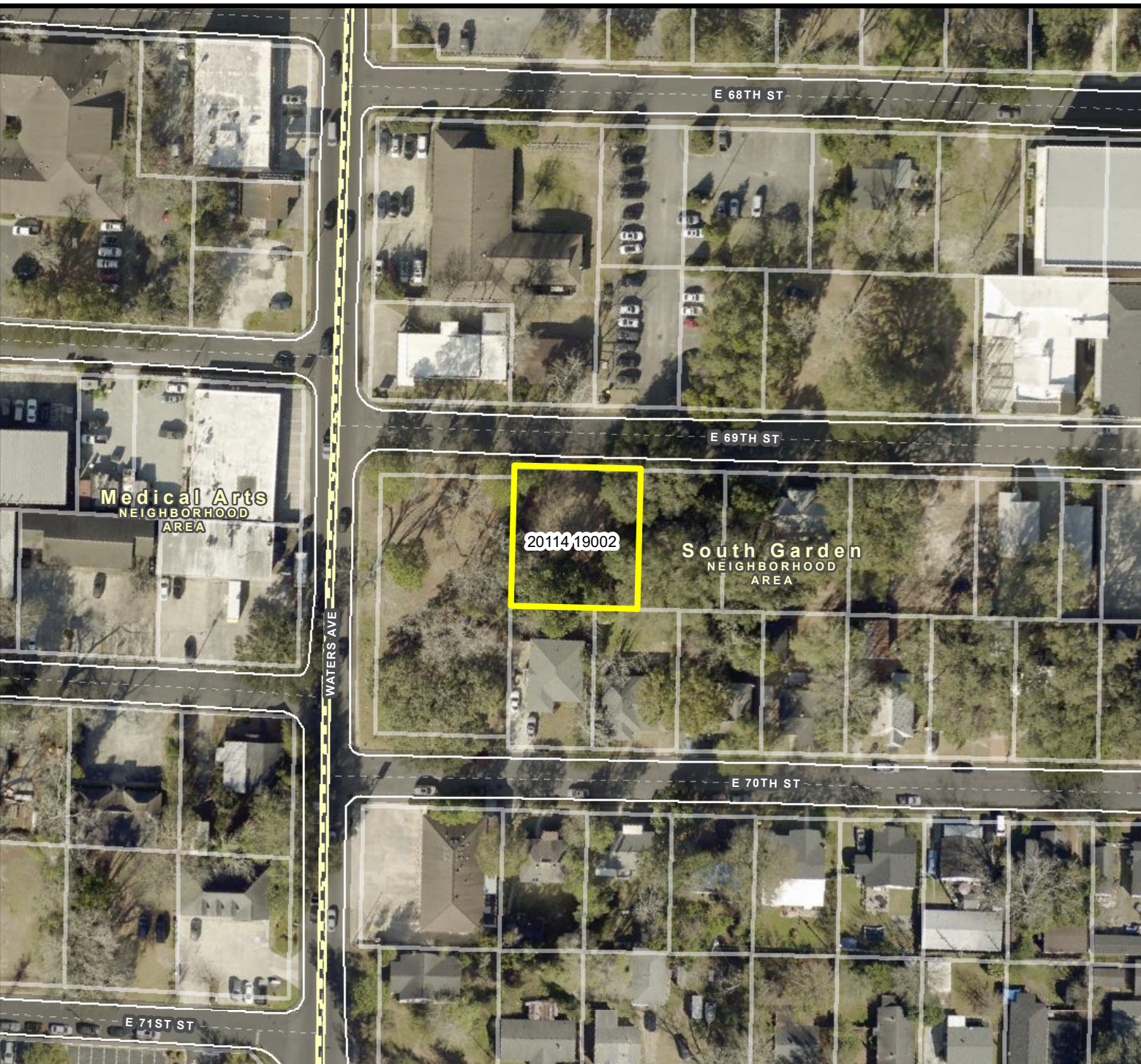
See original petition file for more details regarding specific petition property boundary delineations

\* Newly annexed parcels may need Aldermanic & County Commission District determination

Date: 6/25/2025



CHATHAM COUNTY - SAVANNAH  
**METROPOLITAN PLANNING COMMISSION**  
110 E. STATE ST. SAVANNAH, GA 31412-8246 PHONE 912-651-1440



THIS MAP IS A COMPILATION OF INFORMATION FROM VARIOUS SOURCES AND SCALES. IN MOST CASES THE INFORMATION HAS NOT BEEN FIELD VERIFIED. USE THIS MAP FOR GENERAL PLANNING PURPOSES ONLY.



1 inch = 100 feet

D

# FUTURE LAND USE

File: 25-003170-ZA (Zoning)  
 File: 25-003226-ZA (Land Use)  
 Address: 1103 E. 69th St.  
 Savannah, Ga  
 Aldermanic District: 3 - Wilder-Bryan  
 Commission District: 2 - Hodge  
 Neighborhood: See Map  
 Property ID: 20114 19002

## NOTES:

See original petition file for more details regarding specific petition property boundary delineations

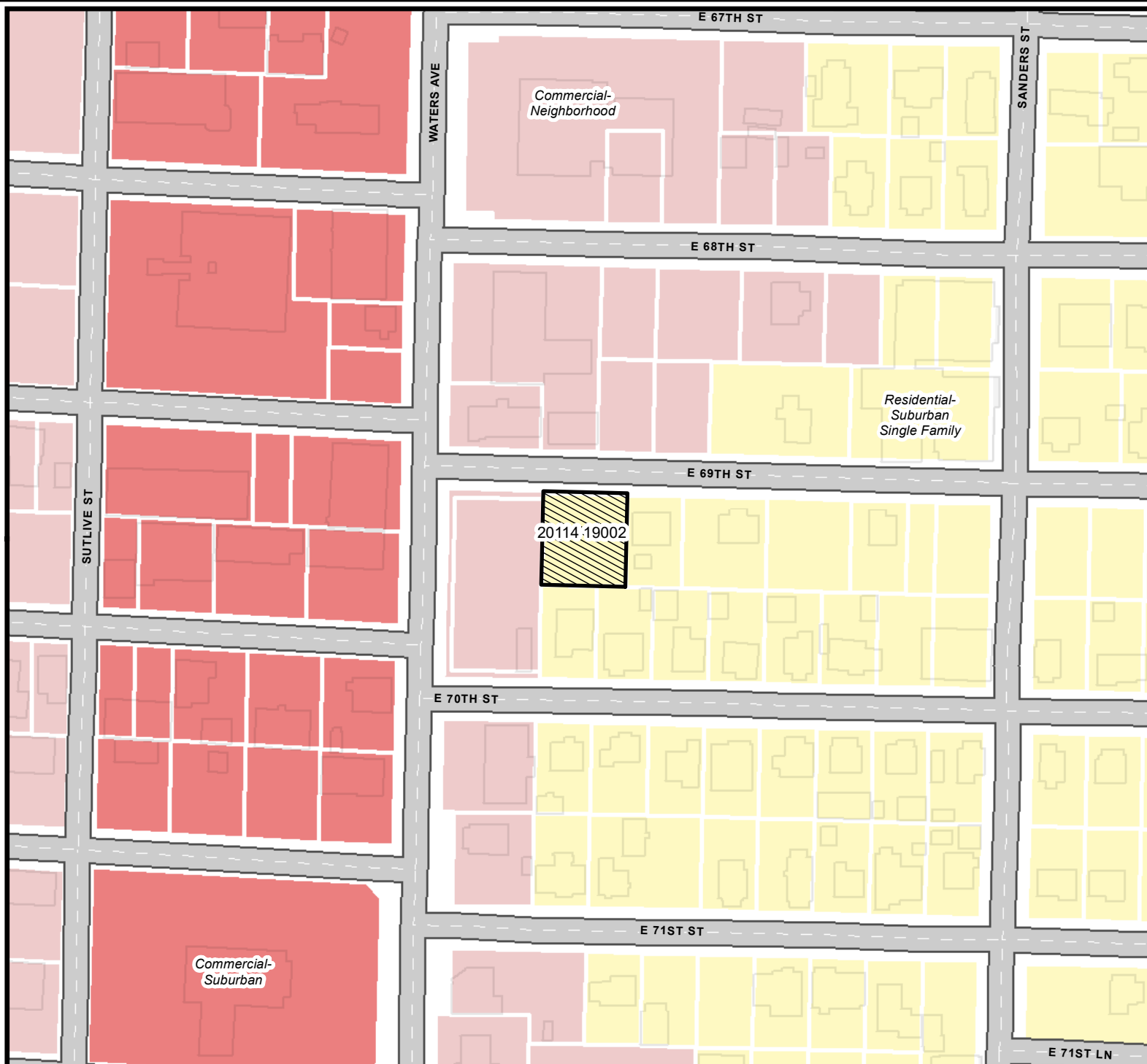
\* Newly annexed parcels may need Aldermanic & County Commission District determination

Commercial- Neighborhood  
 Commercial- Suburban  
 Residential- Suburban Single Family



Date: 6/25/2025

CHATHAM COUNTY - SAVANNAH  
**METROPOLITAN PLANNING COMMISSION**  
 110 E. STATE ST. SAVANNAH, GA 31412-8246 PHONE 912-651-1440



THIS MAP IS A COMPILATION OF INFORMATION FROM VARIOUS SOURCES AND SCALES. IN MOST CASES THE INFORMATION HAS NOT BEEN FIELD VERIFIED. USE THIS MAP FOR GENERAL PLANNING PURPOSES ONLY.



1 inch = 150 feet

D



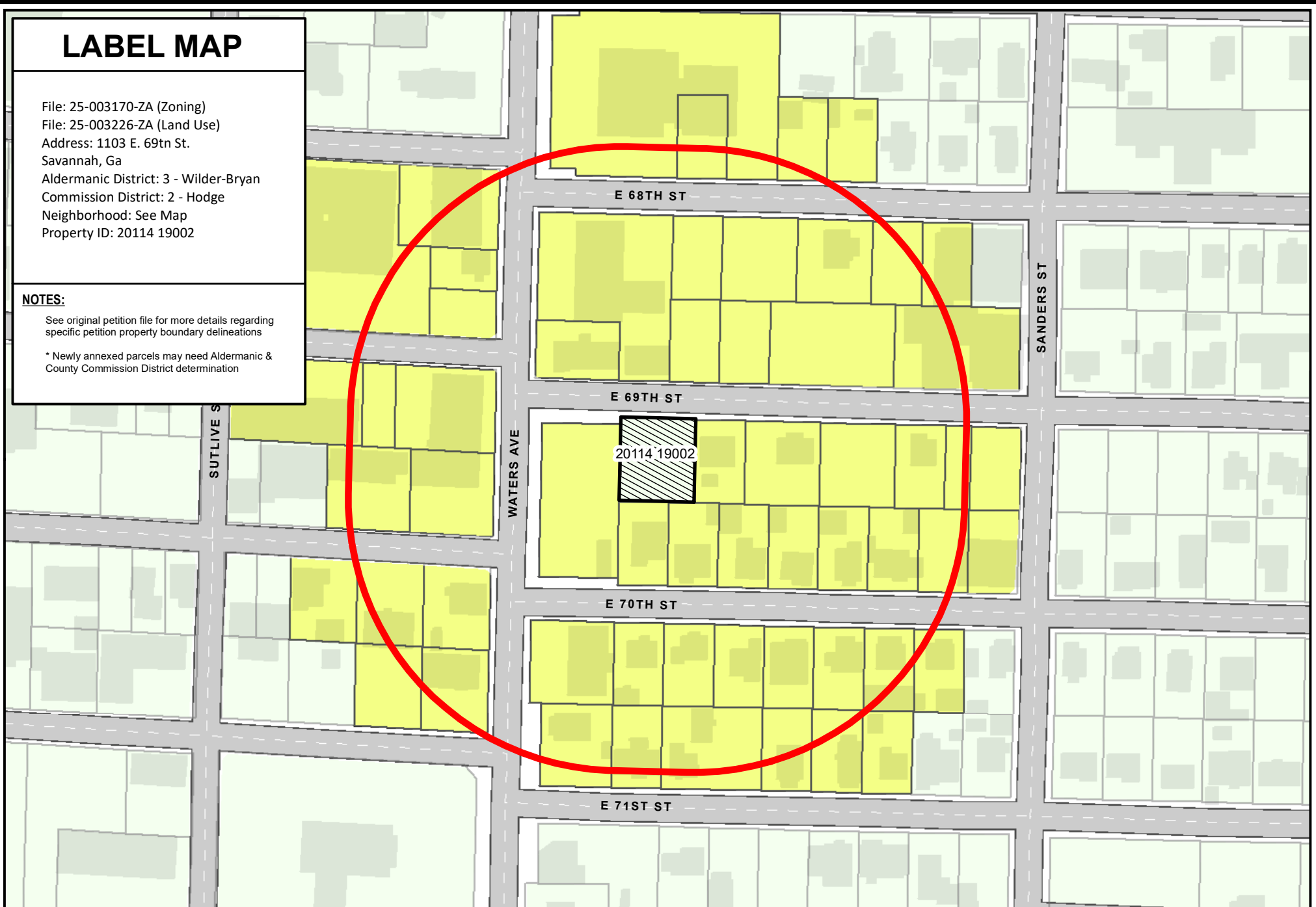
# LABEL MAP

File: 25-003170-ZA (Zoning)  
File: 25-003226-ZA (Land Use)  
Address: 1103 E. 69th St.  
Savannah, Ga  
Aldermanic District: 3 - Wilder-Bryan  
Commission District: 2 - Hodge  
Neighborhood: See Map  
Property ID: 20114 19002

## NOTES:

See original petition file for more details regarding specific petition property boundary delineations

\* Newly annexed parcels may need Aldermanic & County Commission District determination



THIS MAP IS A COMPILATION OF INFORMATION FROM VARIOUS SOURCES AND SCALES. IN MOST CASES THE INFORMATION HAS NOT BEEN FIELD VERIFIED.  
**USE THIS MAP FOR GENERAL PLANNING PURPOSES ONLY.**



1 inch = 150 feet



CHATHAM COUNTY - SAVANNAH  
**METROPOLITAN PLANNING COMMISSION**  
110 E. STATE ST. SAVANNAH, GA 31412-8246 PHONE 912-651-1440

File: 25-003170-ZA (Zoning)  
File: 25-003226-ZA (Land Use)  
Address: 1103 E. 69th St.  
Savannah, Ga  
Aldermanic District: 3 - Wilder-Bryan  
Commission District: 2 - Hodge  
Neighborhood: See Map  
Property ID: 20114 19002

See original petition file for more details regarding specific petition property boundary delineations

\* Newly annexed parcels may need Aldermanic & County Commission District determination

The seal of the Metropolitan Planning Council (MPC) is a circular emblem. It features the text "METROPOLITAN PLANNING COUNCIL" around the top inner edge and "CHICAGO COUNTY, ILLINOIS" around the bottom inner edge. In the center, the letters "mpc" are written in a bold, lowercase, sans-serif font.

**CHATHAM COUNTY - SAVANNAH**  
**METROPOLITAN PLANNING COMMISSION**  
 110 E. STATE ST. SAVANNAH, GA 31412-8246 PHONE 912-651-1440

THIS MAP IS A COMPILATION OF INFORMATION FROM VARIOUS SOURCES AND SCALES. IN MOST CASES THE INFORMATION HAS NOT BEEN FIELD VERIFIED. USE THIS MAP FOR GENERAL PLANNING PURPOSES ONLY.



1 inch = 1,000 feet

# ZONING MAP

WITH TAX PARCELS

File: 25-003170-ZA (Zoning)  
File: 25-003226-ZA (Land Use)  
Address: 1103 E. 69th St.  
Savannah, Ga  
Aldermanic District: 3 - Wilder-Bryan  
Commission District: 2 - Hodge  
Neighborhood: See Map  
Property ID: 20114 19002

## NOTES:

See original petition file for more details regarding specific petition property boundary delineations

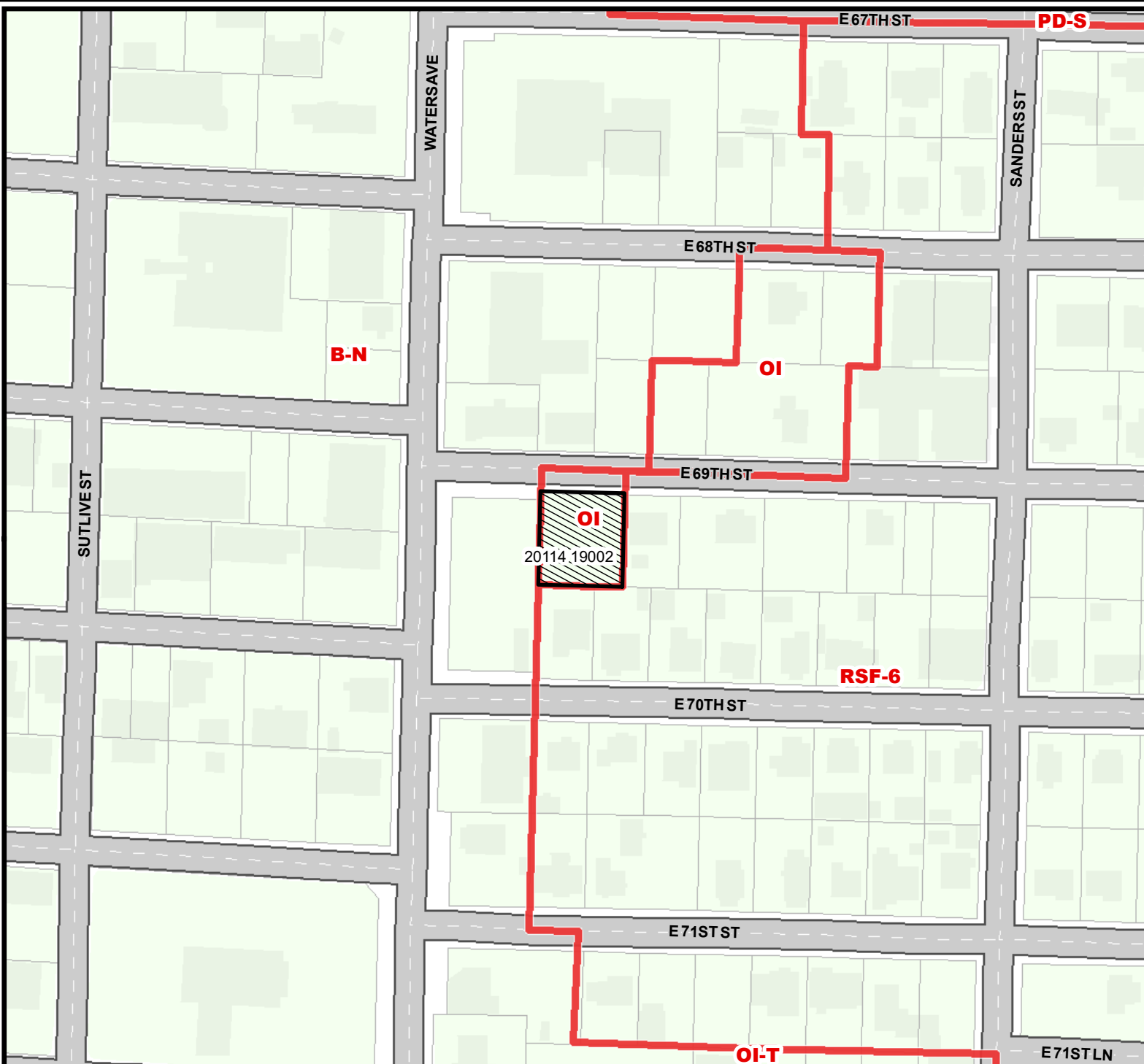
\* Newly annexed parcels may need Aldermanic & County Commission District determination

 ZONING



Date: 6/25/2025

CHATHAM COUNTY - SAVANNAH  
**METROPOLITAN PLANNING COMMISSION**  
110 E. STATE ST. SAVANNAH, GA 31412-8246 PHONE 912-651-1440



THIS MAP IS A COMPILATION OF INFORMATION FROM VARIOUS SOURCES AND SCALES. IN MOST CASES THE INFORMATION HAS NOT BEEN FIELD VERIFIED. USE THIS MAP FOR GENERAL PLANNING PURPOSES ONLY.



1 inch = 150 feet

D