

AERIAL MAP

File: 25-002526-ZA
Address: 0 Bull St, 12, 14, 16 E. 40th St.
Savannah, Ga
Aldermanic District: 2 - Leggett
Commission District: 2 - Hodge
Neighborhood: See Map
Property ID: 20065 39011,012,013,015

NOTES:

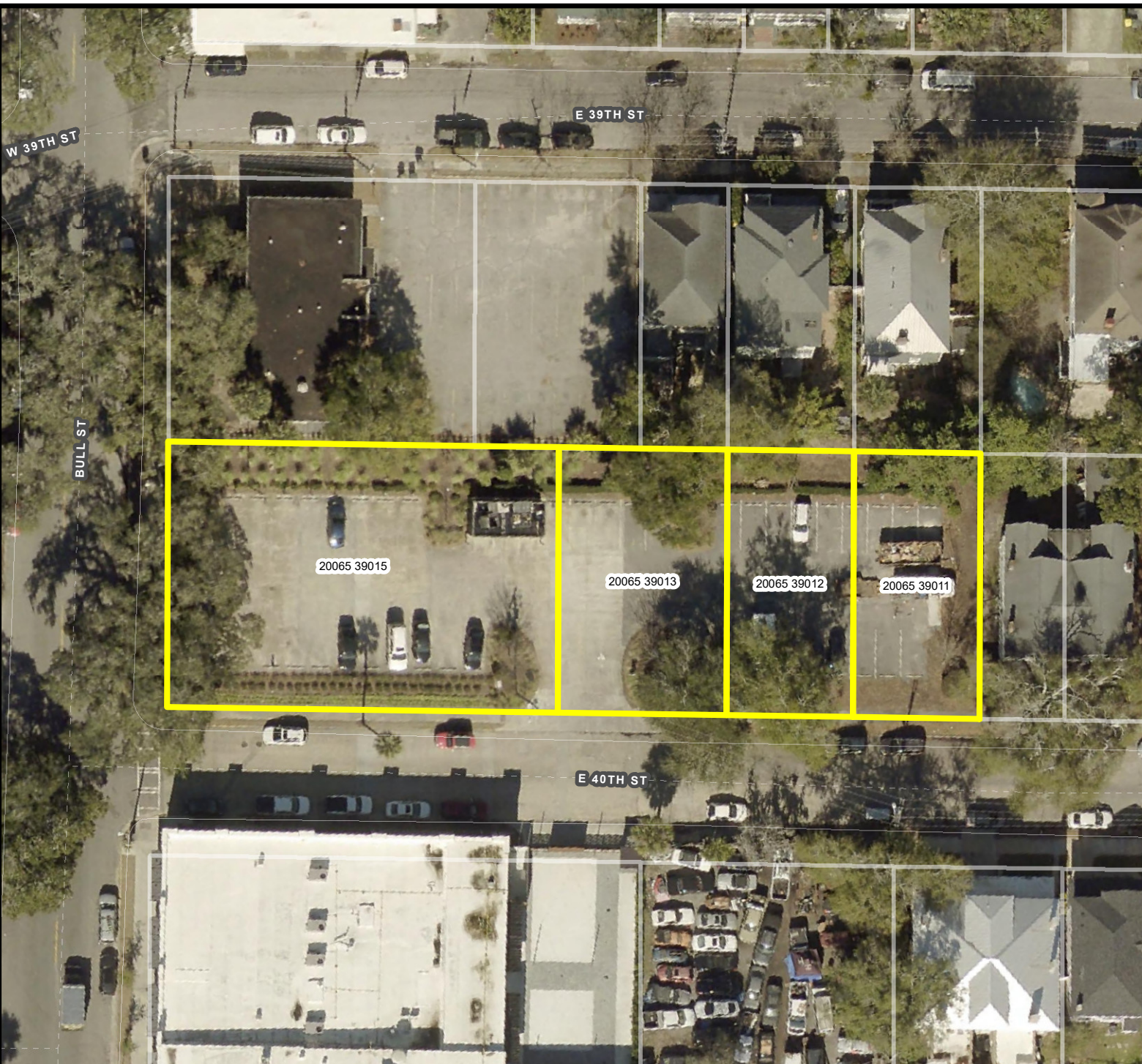
See original petition file for more details regarding specific petition property boundary delineations

* Newly annexed parcels may need Aldermanic & County Commission District determination

Date: 5/14/2025



CHATHAM COUNTY - SAVANNAH
METROPOLITAN PLANNING COMMISSION
110 E. STATE ST. SAVANNAH, GA 31412-8246 PHONE 912-651-1440



THIS MAP IS A COMPILATION OF INFORMATION FROM VARIOUS SOURCES AND SCALES. IN MOST CASES THE INFORMATION HAS NOT BEEN FIELD VERIFIED. USE THIS MAP FOR GENERAL PLANNING PURPOSES ONLY.



1 inch = 50 feet

D

FUTURE LAND USE

File: 25-002526-ZA
Address: 0 Bull St, 12, 14, 16 E. 40th St.
Savannah, Ga
Aldermanic District: 2 - Leggett
Commission District: 2 - Hodge
Neighborhood: See Map
Property ID: 20065 39011,012,013,015

NOTES:

See original petition file for more details regarding specific petition property boundary delineations

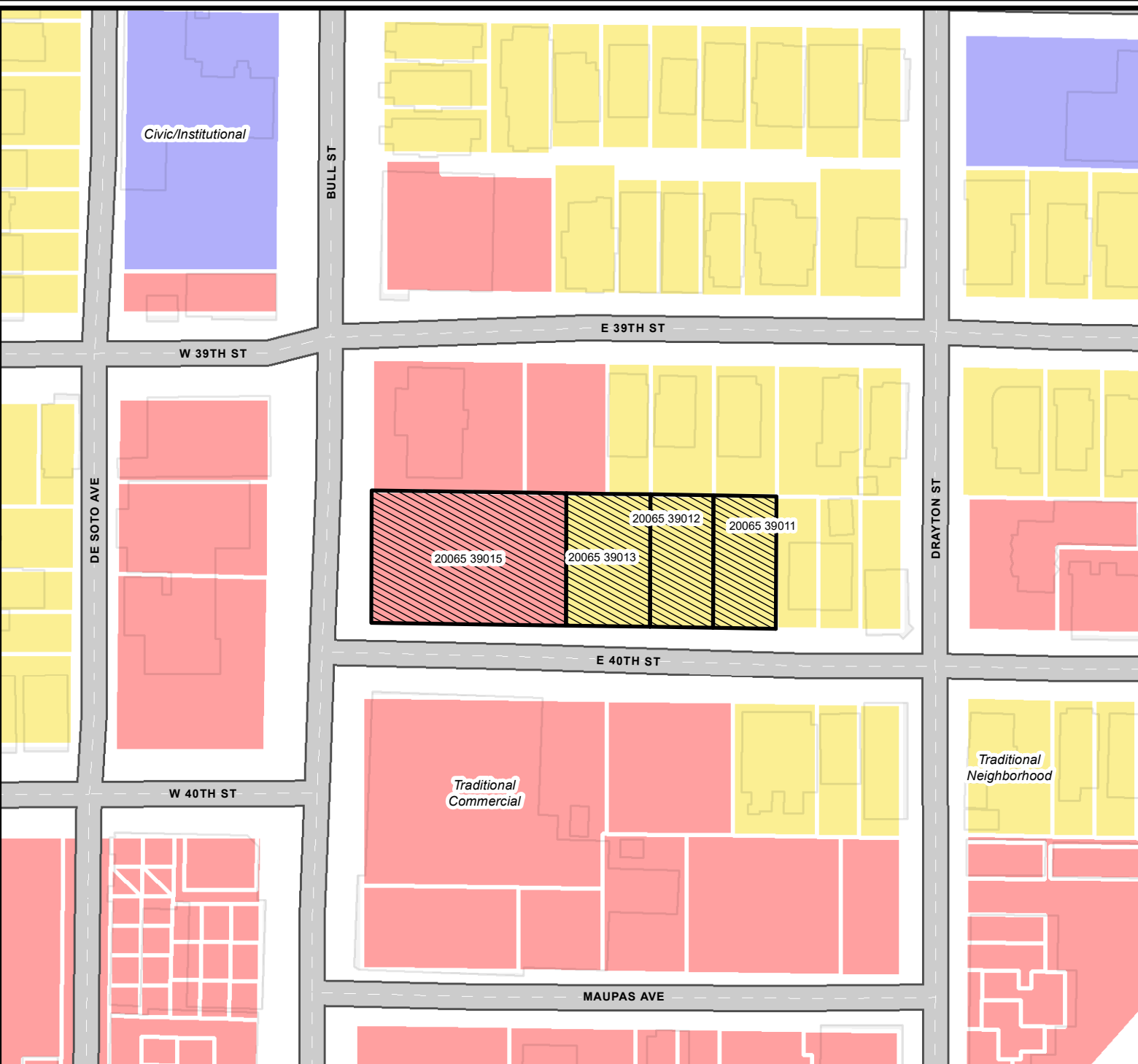
* Newly annexed parcels may need Aldermanic & County Commission District determination

Traditional Commercial
Traditional Neighborhood
Civic/Institutional

Date: 5/14/2025



CHATHAM COUNTY - SAVANNAH
METROPOLITAN PLANNING COMMISSION
110 E. STATE ST. SAVANNAH, GA 31412-8246 PHONE 912-651-1440



THIS MAP IS A COMPILATION OF INFORMATION FROM VARIOUS SOURCES AND SCALES. IN MOST CASES THE INFORMATION HAS NOT BEEN FIELD VERIFIED. USE THIS MAP FOR GENERAL PLANNING PURPOSES ONLY.



1 inch = 100 feet

D

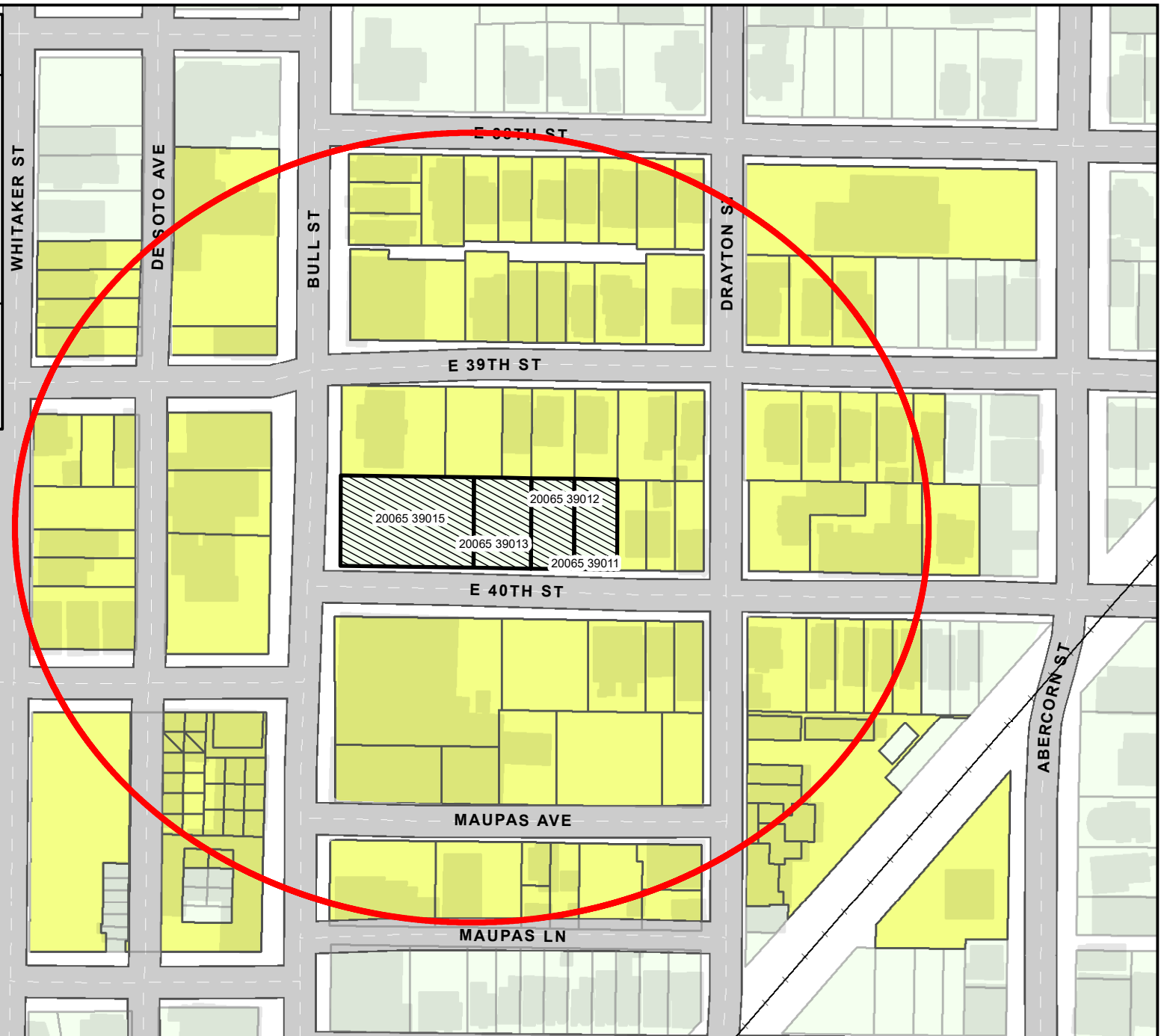
LABEL MAP

File: 25-002526-ZA
Address: 0 Bull St, 12, 14, 16 E. 40th St.
Savannah, Ga
Aldermanic District: 2 - Leggett
Commission District: 2 - Hodge
Neighborhood: See Map
Property ID: 20065 39011,012,013,015

NOTES:

See original petition file for more details regarding specific petition property boundary delineations

* Newly annexed parcels may need Aldermanic & County Commission District determination



THIS MAP IS A COMPILATION OF INFORMATION FROM VARIOUS SOURCES AND SCALES. IN MOST CASES THE INFORMATION HAS NOT BEEN FIELD VERIFIED.
USE THIS MAP FOR GENERAL PLANNING PURPOSES ONLY.



Date: 5/14/2025

1 inch = 150 feet



CHATHAM COUNTY - SAVANNAH
METROPOLITAN PLANNING COMMISSION
110 E. STATE ST. SAVANNAH, GA 31412-8246 PHONE 912-651-1440

VICINITY MAP

File: 25-002526-ZA
Address: 0 Bull St, 12, 14, 16 E. 40th St.
Savannah, Ga
Aldermanic District: 2 - Leggett
Commission District: 2 - Hodge
Neighborhood: See Map
Property ID: 20065 39011,012,013,015

NOTES:

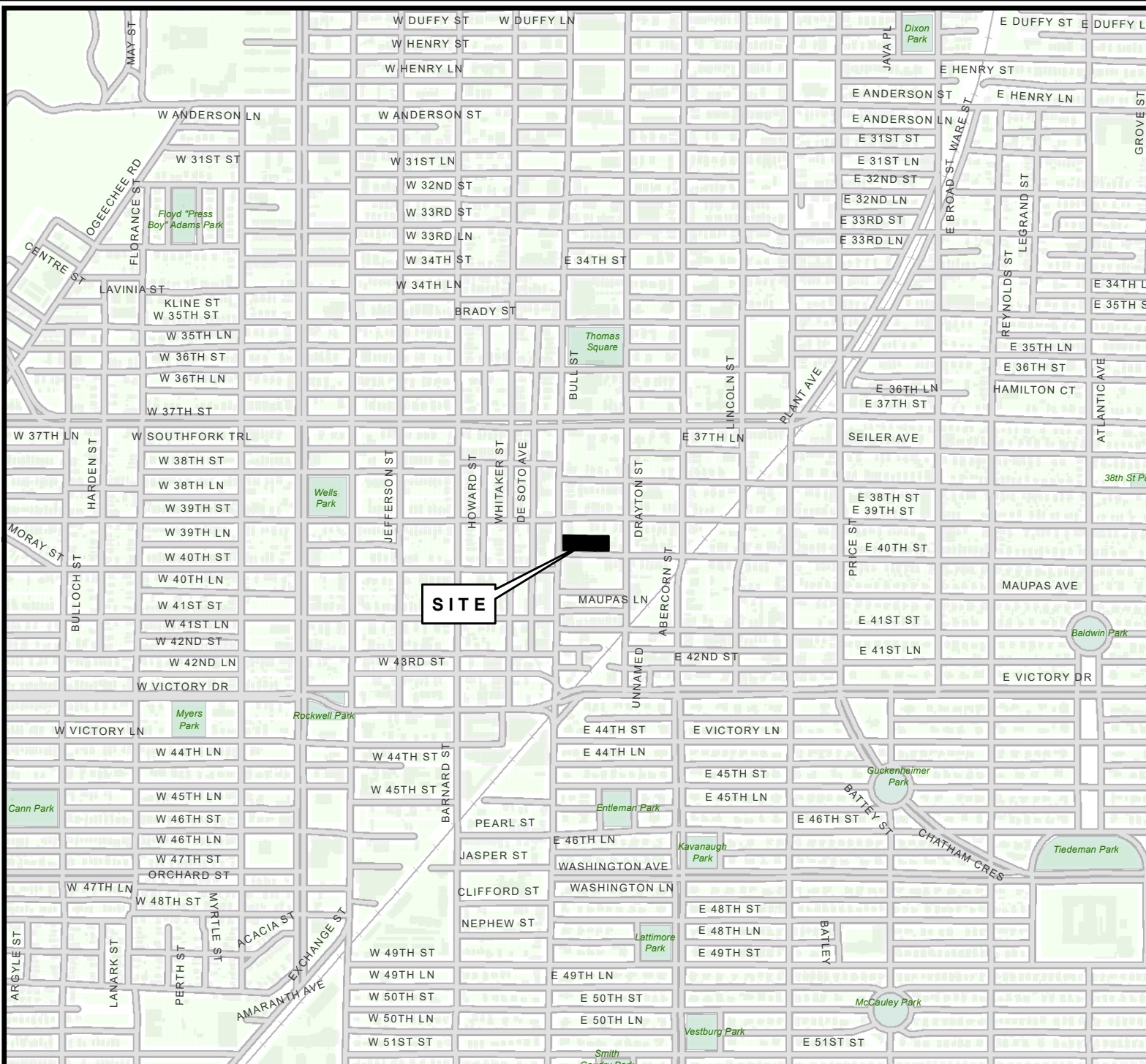
See original petition file for more details regarding specific petition property boundary delineations

* Newly annexed parcels may need Aldermanic & County Commission District determination

Date: 5/14/2025



CHATHAM COUNTY - SAVANNAH
METROPOLITAN PLANNING COMMISSION
110 E. STATE ST. SAVANNAH, GA 31412-8246 PHONE 912-651-1440

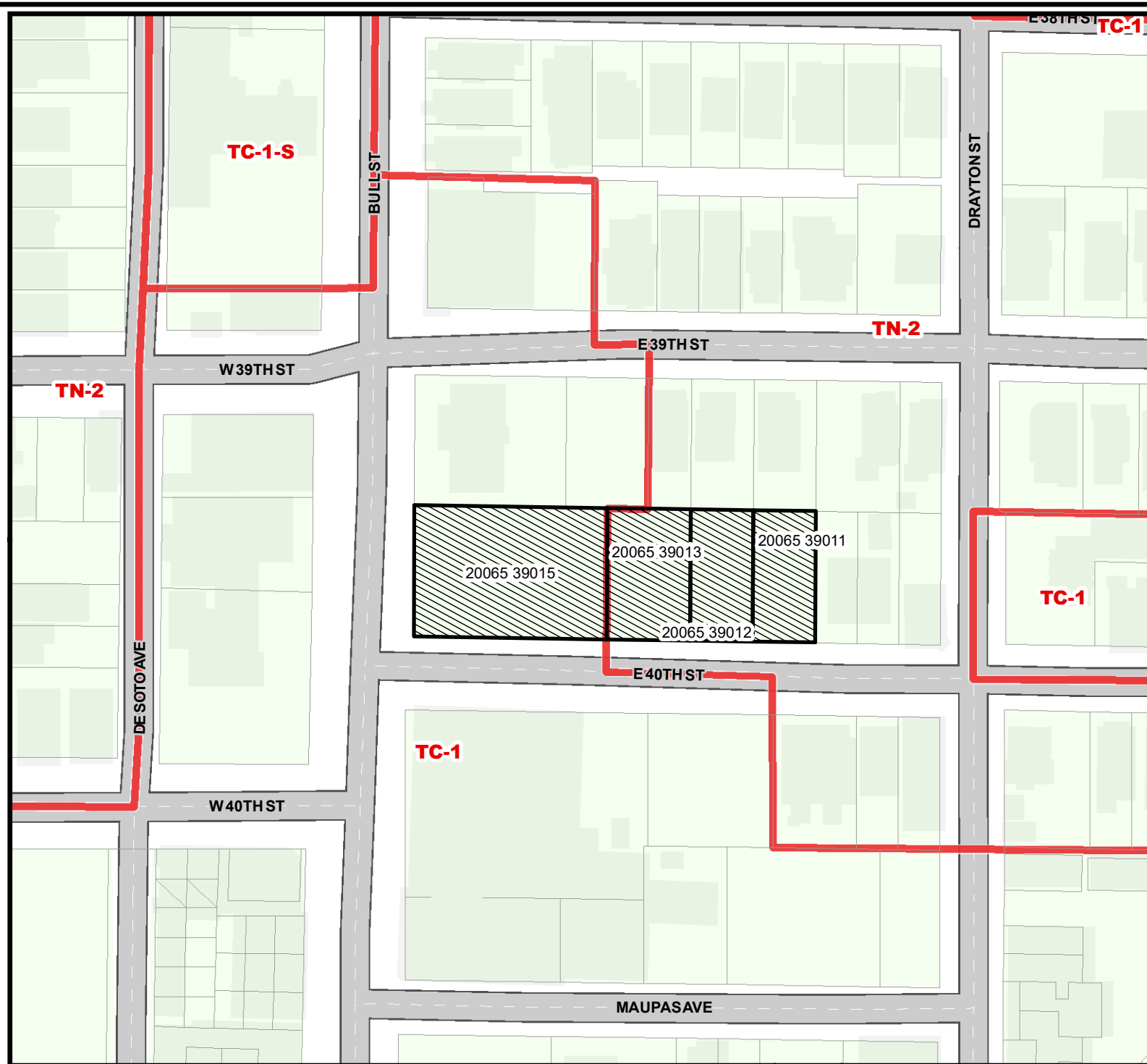


THIS MAP IS A COMPILATION OF INFORMATION FROM VARIOUS SOURCES AND SCALES. IN MOST CASES THE INFORMATION HAS NOT BEEN FIELD VERIFIED. USE THIS MAP FOR GENERAL PLANNING PURPOSES ONLY.



1 inch = 900 feet

D



ZONING MAP

WITH TAX PARCELS

File: 25-002526-ZA
Address: 0 Bull St, 12, 14, 16 E. 40th St.
Savannah, Ga
Aldermanic District: 2 - Leggett
Commission District: 2 - Hodge
Neighborhood: See Map
Property ID: 20065 39011,012,013,015

NOTES:

See original petition file for more details regarding specific petition property boundary delineations

* Newly annexed parcels may need Aldermanic & County Commission District determination



ZONING



Date: 5/14/2025

CHATHAM COUNTY - SAVANNAH
METROPOLITAN PLANNING COMMISSION
110 E. STATE ST. SAVANNAH, GA 31412-8246 PHONE 912-651-1440

THIS MAP IS A COMPILATION OF INFORMATION FROM VARIOUS SOURCES AND SCALES. IN MOST CASES THE INFORMATION HAS NOT BEEN FIELD VERIFIED. USE THIS MAP FOR GENERAL PLANNING PURPOSES ONLY.



1 inch = 100 feet

D