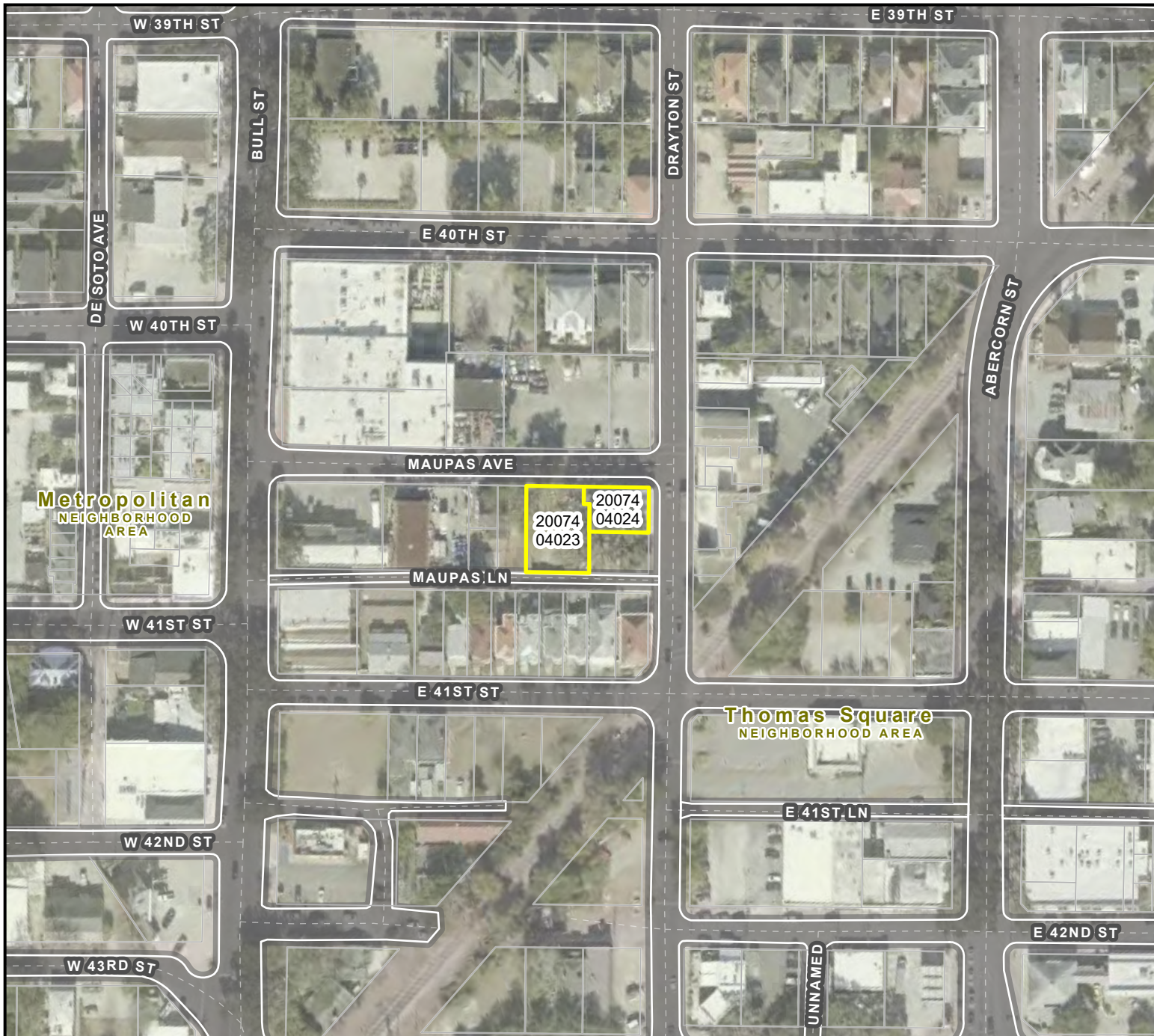


AERIAL MAP

File: 26-002396-ZA
Address: 15 & 25 MAUPAS AVE
Savannah, Ga
Aldermanic District: 2 - Leggett
Commission District: 2 - Hodge
Neighborhood: See Map
Property ID: 20074 04023, 20074 04024



NOTE:
See original petition file for more details regarding specific petition property boundary delineations
Newly annexed parcels may need Aldermanic & County Commission District determination

THIS MAP IS A COMPILATION OF INFORMATION FROM VARIOUS SOURCES AND SCALES. IN MOST CASES THE INFORMATION HAS NOT BEEN FIELD VERIFIED.
USE THIS MAP FOR GENERAL PLANNING PURPOSES ONLY.



SCALE:
1" = 150 feet


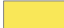
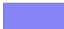


CHATHAM COUNTY - SAVANNAH
METROPOLITAN PLANNING COMMISSION
110 E. STATE ST. SAVANNAH, GA 31412-8246 PHONE 912-651-1440

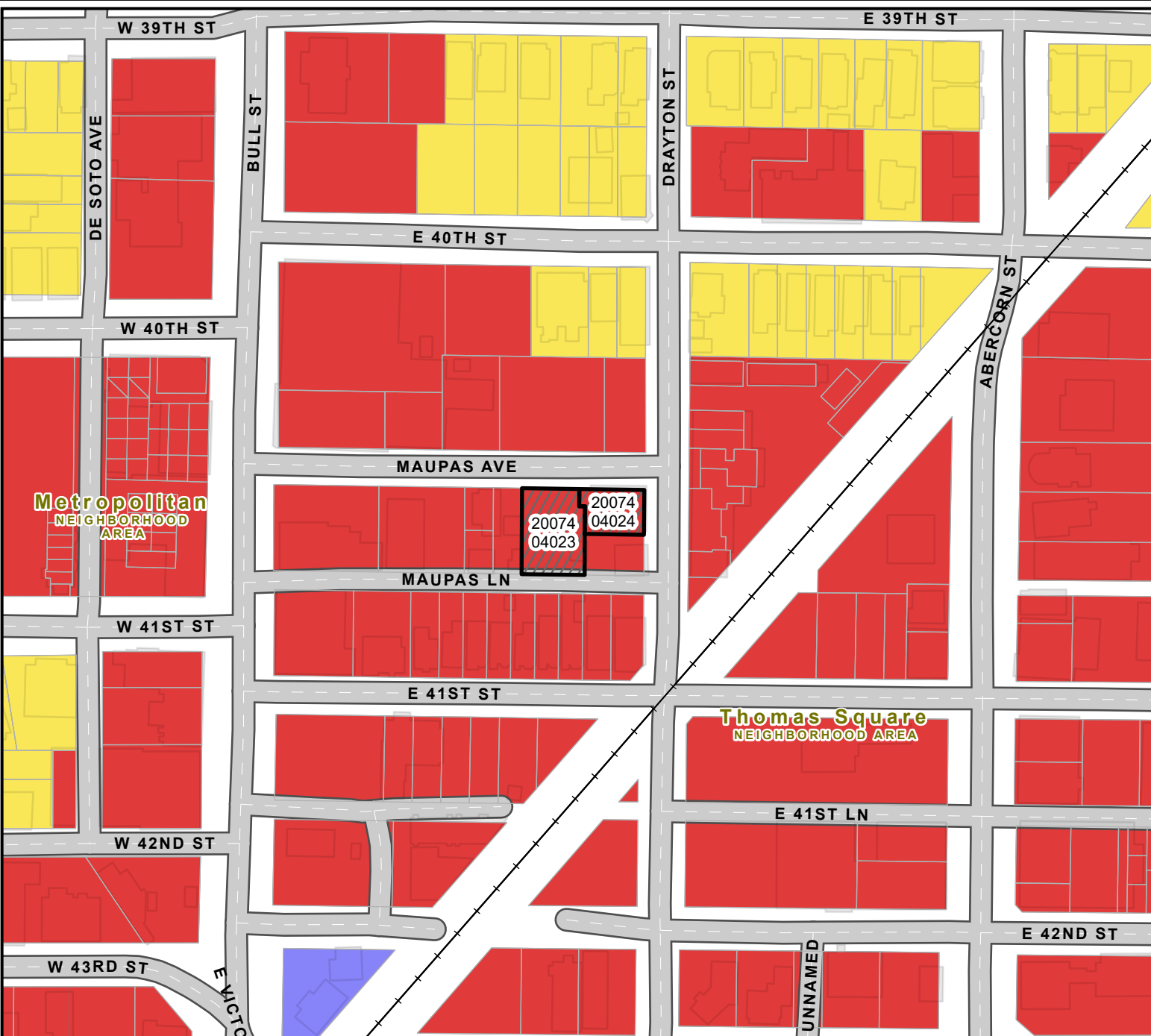
FLU MAP

(FUTURE LAND USE)

File: 26-002396-ZA
Address: 15 & 25 MAUPAS AVE
Savannah, Ga
Aldermanic District: 2 - Leggett
Commission District: 2 - Hodge
Neighborhood: See Map
Property ID: 20074 04023, 20074 04024

-  Traditional Commercial
-  Traditional Neighborhood
-  Civic/Institutional

NOTE:
See original petition file for more details regarding specific petition property boundary delineations
Newly annexed parcels may need Aldermanic & County Commission District determination



THIS MAP IS A COMPILATION OF INFORMATION FROM VARIOUS SOURCES AND SCALES. IN MOST CASES THE INFORMATION HAS NOT BEEN FIELD VERIFIED.
USE THIS MAP FOR GENERAL PLANNING PURPOSES ONLY.



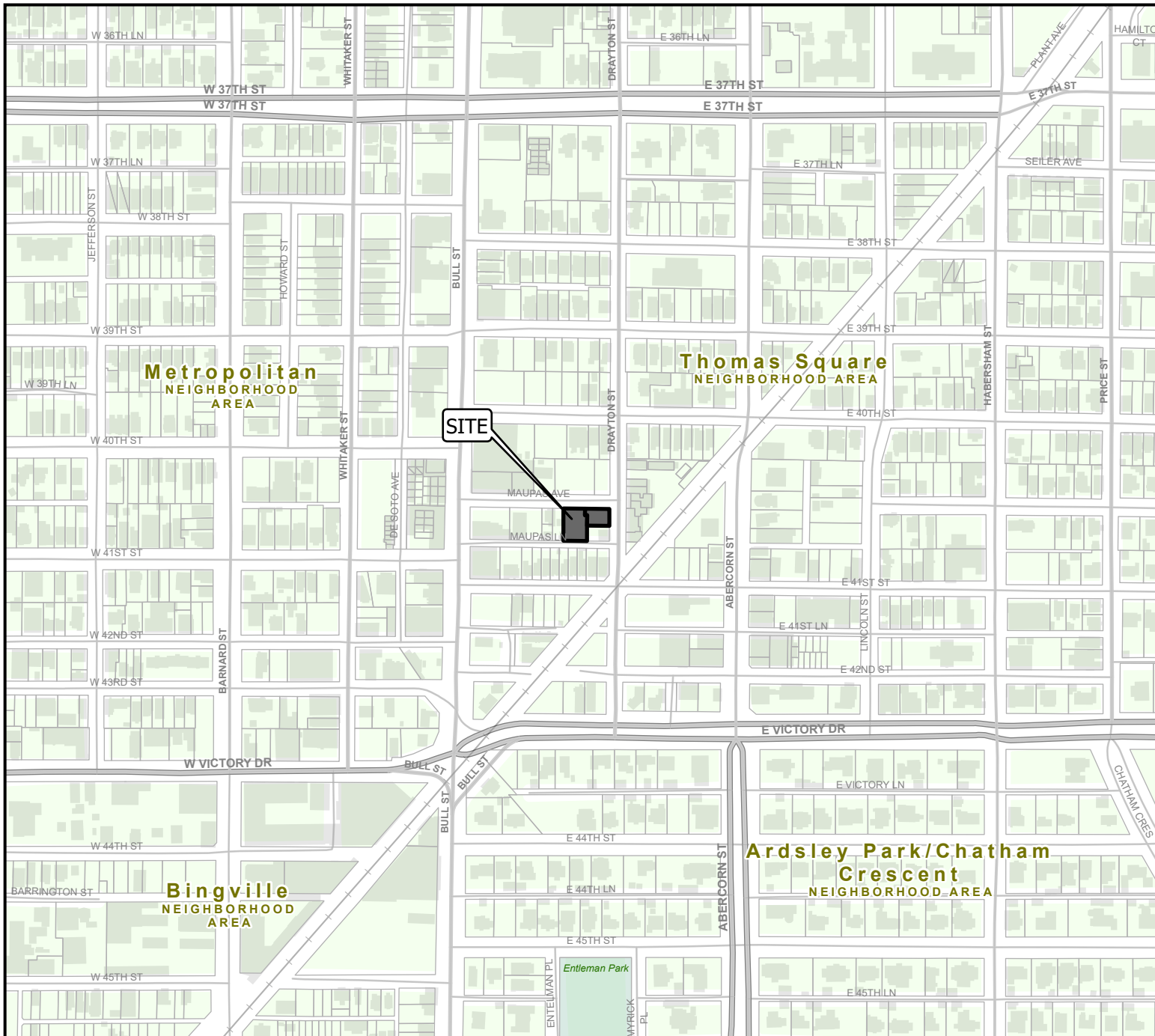
SCALE:
1" = 150 feet



CHATHAM COUNTY - SAVANNAH
METROPOLITAN PLANNING COMMISSION
110 E. STATE ST. SAVANNAH, GA 31412-8246 PHONE 912-651-1440

VICINITY MAP

File: 26-002396-ZA
 Address: 15 & 25 MAUPAS AVE
 Savannah, Ga
 Aldermanic District: 2 - Leggett
 Commission District: 2 - Hodge
 Neighborhood: See Map
 Property ID: 20074 04023, 20074 04024



NOTE:
 See original petition file for more details regarding specific petition property boundary delineations
 Newly annexed parcels may need Aldermanic & County Commission District determination

THIS MAP IS A COMPILATION OF INFORMATION FROM VARIOUS SOURCES AND SCALES. IN MOST CASES THE INFORMATION HAS NOT BEEN FIELD VERIFIED.
USE THIS MAP FOR GENERAL PLANNING PURPOSES ONLY.



SCALE:
 1" = 400 feet



CHATHAM COUNTY - SAVANNAH
METROPOLITAN PLANNING COMMISSION
 110 E. STATE ST. SAVANNAH, GA 31412-8246 PHONE 912-651-1440

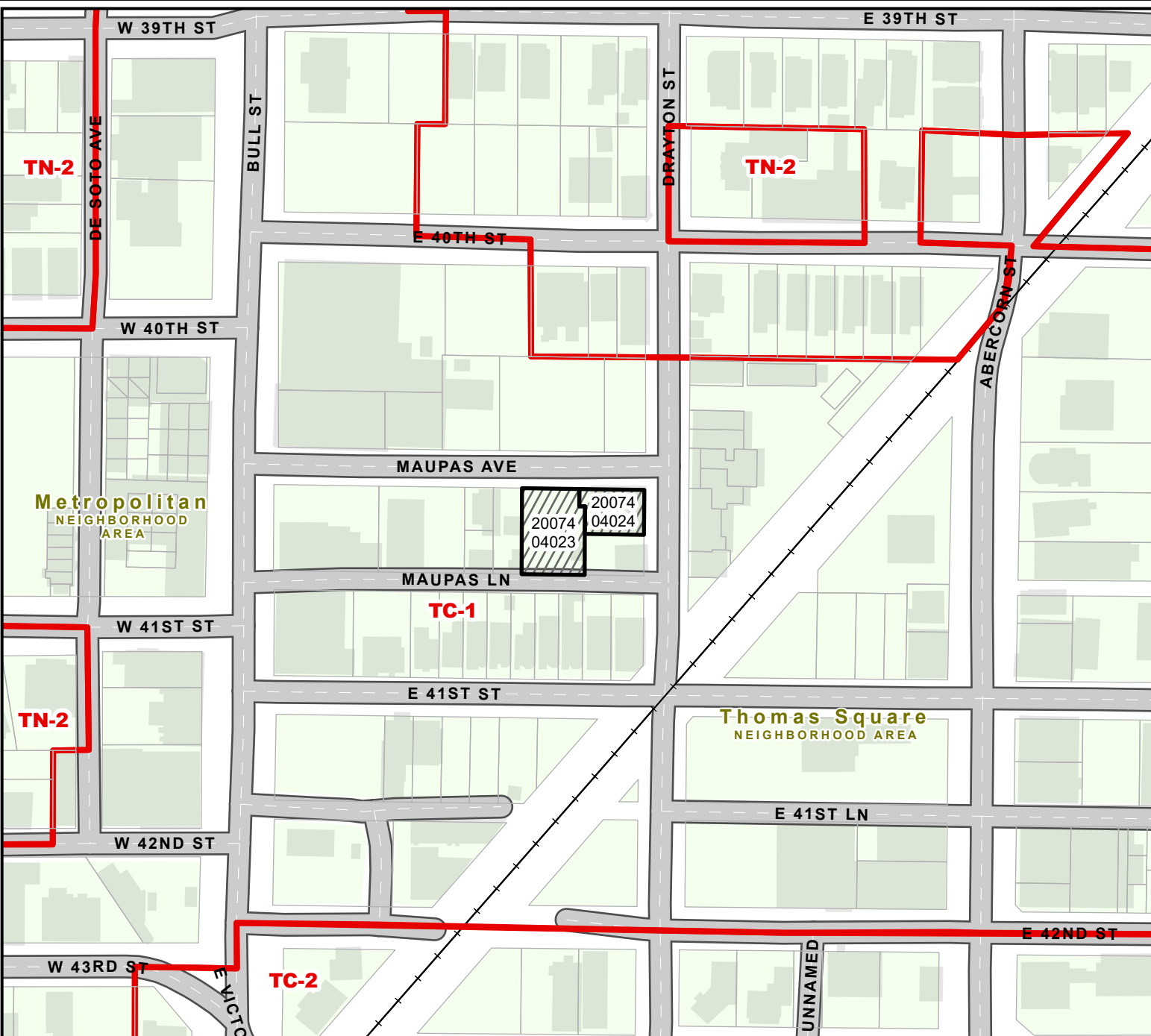
ZONING MAP

WITH PROPERTY LINES

File: 26-002396-ZA
Address: 15 & 25 MAUPAS AVE
Savannah, Ga
Aldermanic District: 2 - Leggett
Commission District: 2 - Hodge
Neighborhood: See Map
Property ID: 20074 04023, 20074 04024

 ZONING

NOTE:
See original petition file for more details regarding specific petition property boundary delineations
Newly annexed parcels may need Aldermanic & County Commission District determination



THIS MAP IS A COMPILATION OF INFORMATION FROM VARIOUS SOURCES AND SCALES. IN MOST CASES THE INFORMATION HAS NOT BEEN FIELD VERIFIED.
USE THIS MAP FOR GENERAL PLANNING PURPOSES ONLY.



SCALE:
1" = 150 feet



CHATHAM COUNTY - SAVANNAH
METROPOLITAN PLANNING COMMISSION
110 E. STATE ST. SAVANNAH, GA 31412-8246 PHONE 912-651-1440