

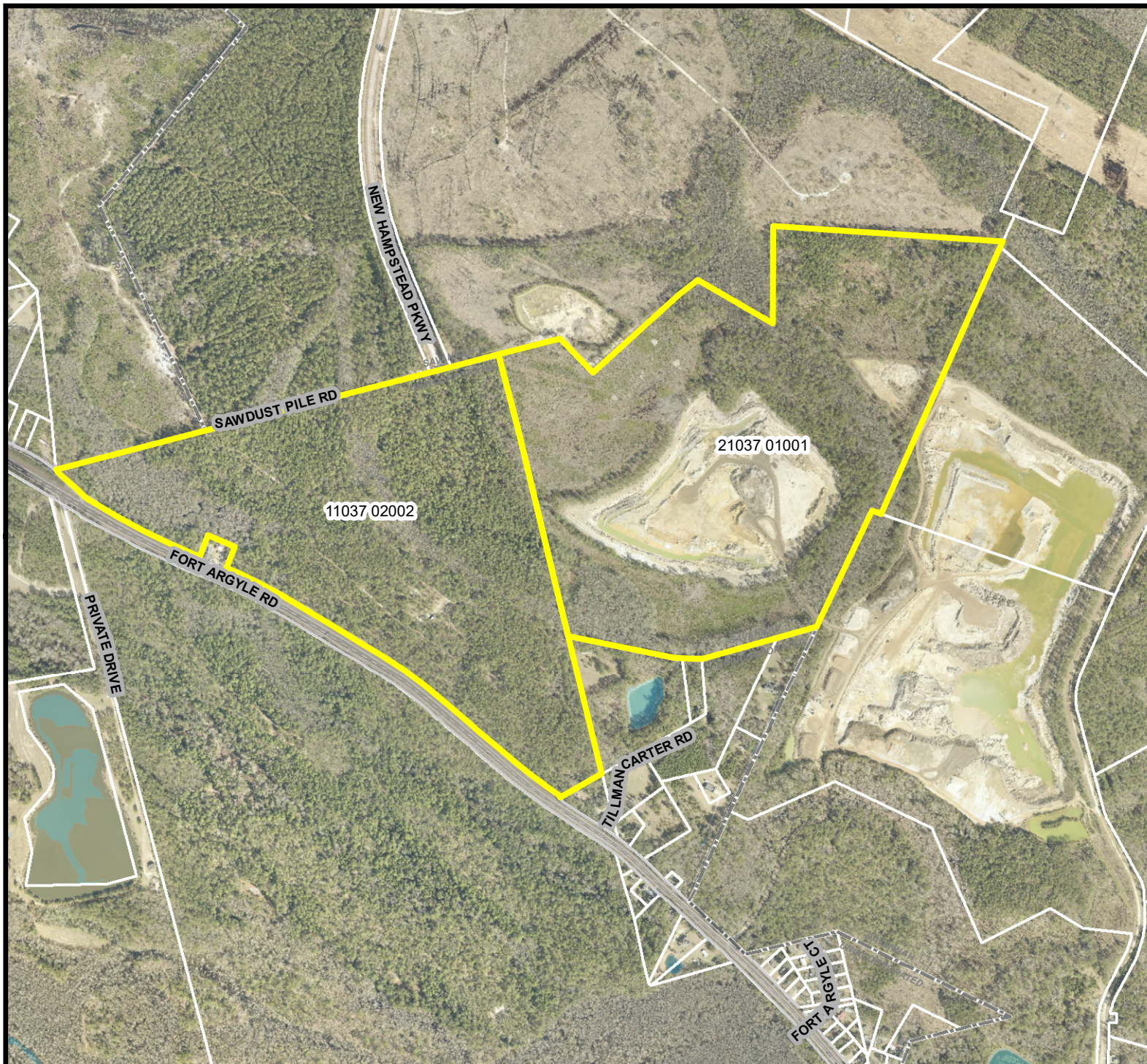
AERIAL MAP

File: 26-001014-ZA
Address: 0 & 1150 Fort Argyle Rd.
Savannah, Ga
Aldermanic District: 5 - Shabazz
Commission District: 7 - Kicklighter
Neighborhood: See Map
Property ID: 11037 02002, 21037 01001
Type: Zoning/Land Use

NOTES:

See original petition file for more details regarding specific petition property boundary delineations

* Newly annexed parcels may need Aldermanic & County Commission District determination



THIS MAP IS A COMPILATION OF INFORMATION FROM VARIOUS SOURCES AND SCALES. IN MOST CASES THE INFORMATION HAS NOT BEEN FIELD VERIFIED. USE THIS MAP FOR GENERAL PLANNING PURPOSES ONLY.



1 inch = 1,000 feet

D



Date: 4/2/2026

CHATHAM COUNTY - SAVANNAH
METROPOLITAN PLANNING COMMISSION
110 E. STATE ST. SAVANNAH, GA 31412-8246 PHONE 912-651-1440

FUTURE LAND USE

File: 26-001014-ZA
 Address: 0 & 1150 Fort Argyle Rd.
 Savannah, Ga
 Aldermanic District: 5 - Shabazz
 Commission District: 7 - Kicklighter
 Neighborhood: See Map
 Property ID: 11037 02002, 21037 01001
 Type: Zoning/Land Use



NOTES:

See original petition file for more details regarding specific petition property boundary delineations

* Newly annexed parcels may need Aldermanic & County Commission District determination

- Open Water
- Residential- Suburban Single Family
- Planned Development
- Transportation/Communication/Utilit
- Conservation- Residential
- Surface Mine

Date: 4/2/2026



CHATHAM COUNTY - SAVANNAH
METROPOLITAN PLANNING COMMISSION
 110 E. STATE ST. SAVANNAH, GA 31412-8246 PHONE 912-651-1440

THIS MAP IS A COMPILATION OF INFORMATION FROM VARIOUS SOURCES AND SCALES. IN MOST CASES THE INFORMATION HAS NOT BEEN FIELD VERIFIED. USE THIS MAP FOR GENERAL PLANNING PURPOSES ONLY.

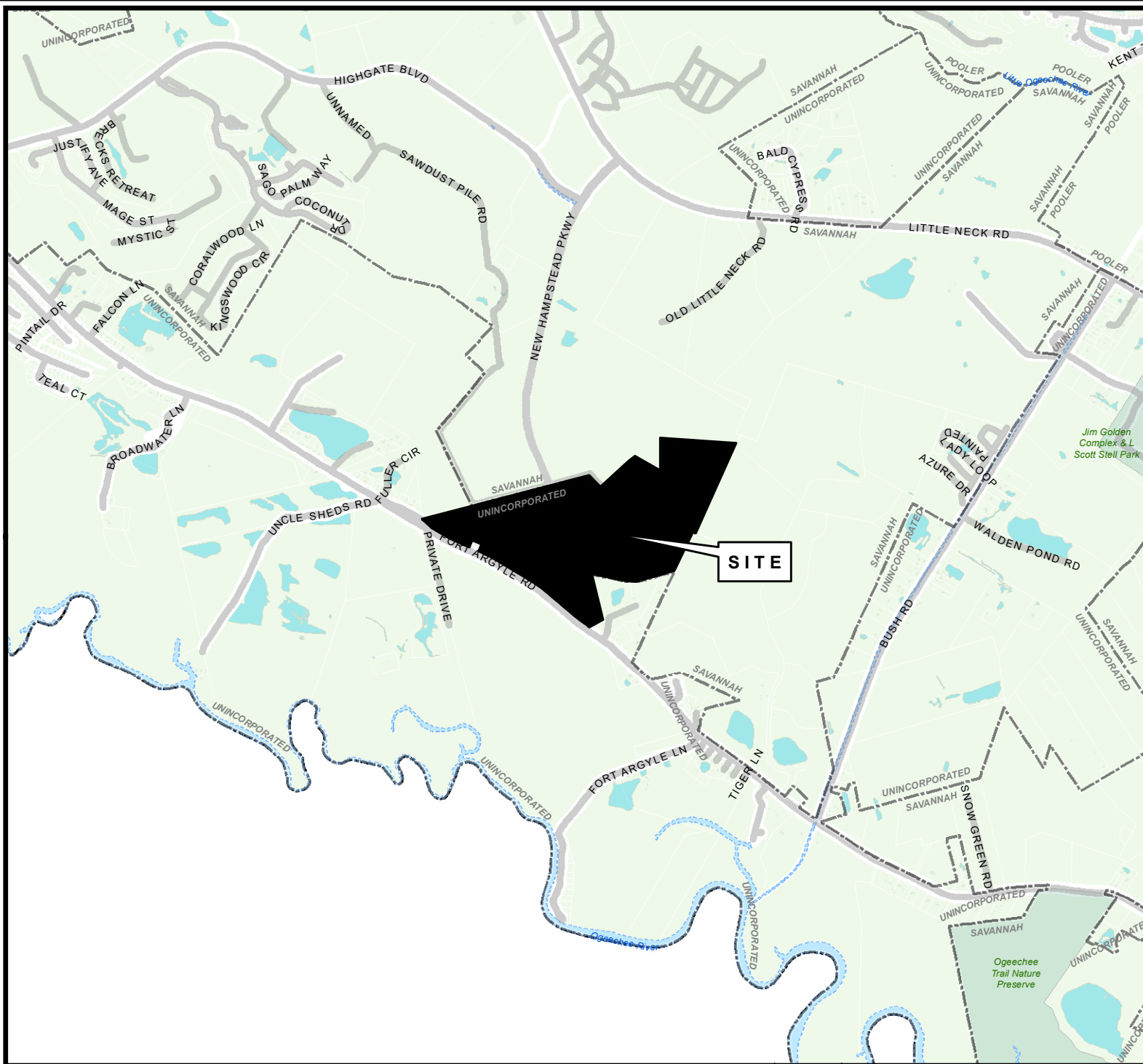


1 inch = 1,000 feet

D

VICINITY MAP

File: 26-001014-ZA
 Address: 0 & 1150 Fort Argyle Rd.
 Savannah, Ga
 Aldermanic District: 5 - Shabazz
 Commission District: 7 - Kicklighter
 Neighborhood: See Map
 Property ID: 11037 02002, 21037 01001
 Type: Zoning/Land Use



NOTES:

See original petition file for more details regarding specific petition property boundary delineations
 * Newly annexed parcels may need Aldermanic & County Commission District determination

Date: 4/2/2026



CHATHAM COUNTY - SAVANNAH
METROPOLITAN PLANNING COMMISSION
 110 E. STATE ST. SAVANNAH, GA 31412-8246 PHONE 912-651-1440

THIS MAP IS A COMPILATION OF INFORMATION FROM VARIOUS SOURCES AND SCALES. IN MOST CASES THE INFORMATION HAS NOT BEEN FIELD VERIFIED. USE THIS MAP FOR GENERAL PLANNING PURPOSES ONLY.



1 inch = 3,000 feet

ZONING MAP

WITH TAX PARCELS

File: 26-001014-ZA
Address: 0 & 1150 Fort Argyle Rd.
Savannah, Ga
Aldermanic District: 5 - Shabazz
Commission District: 7 - Kicklighter
Neighborhood: See Map
Property ID: 11037 02002, 21037 01001
Type: Zoning/Land Use

NOTES:

See original petition file for more details regarding specific petition property boundary delineations

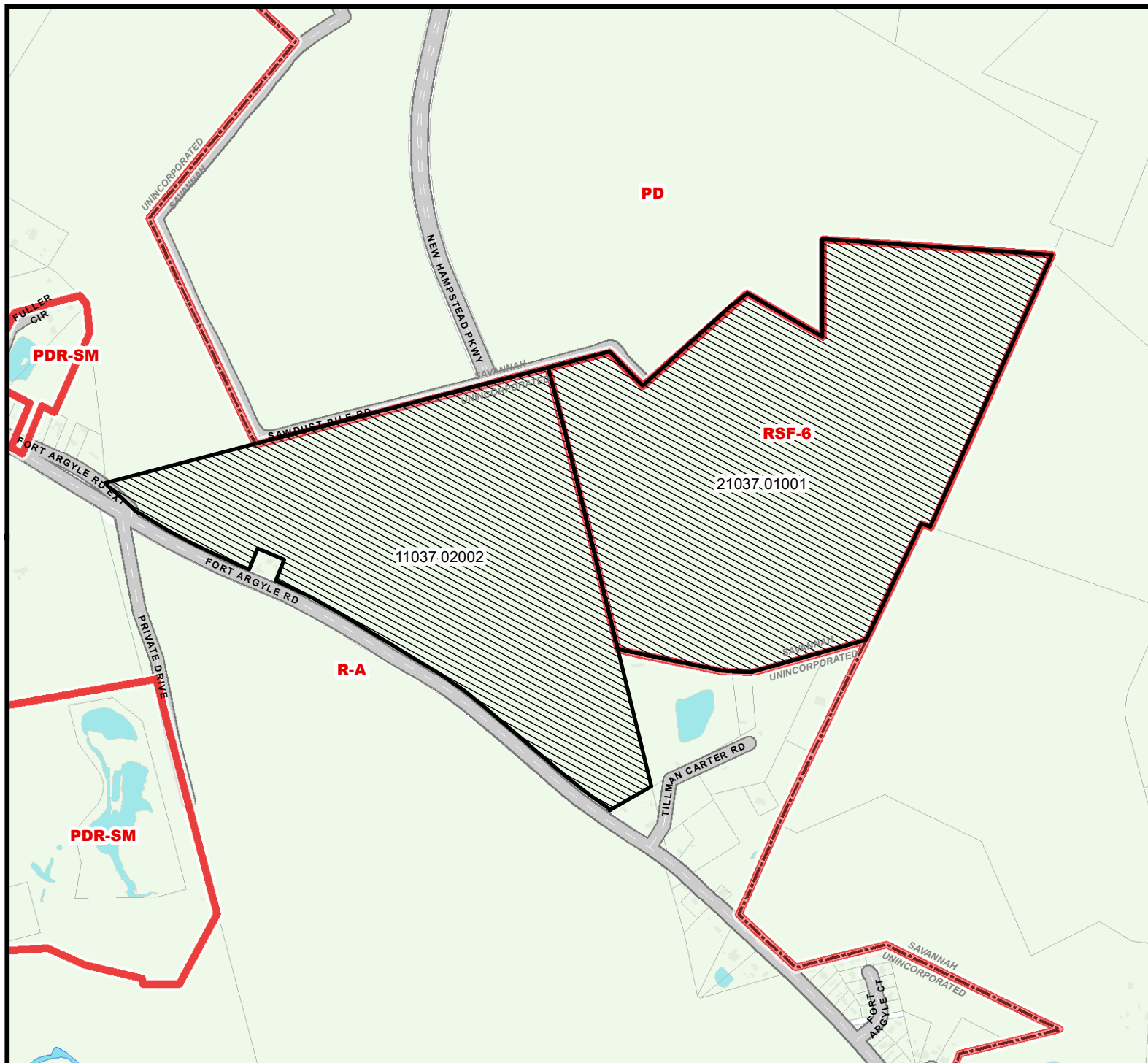
* Newly annexed parcels may need Aldermanic & County Commission District determination

 ZONING

Date: 4/2/2026



CHATHAM COUNTY - SAVANNAH
METROPOLITAN PLANNING COMMISSION
110 E. STATE ST. SAVANNAH, GA 31412-8246 PHONE 912-651-1440



THIS MAP IS A COMPILATION OF INFORMATION FROM VARIOUS SOURCES AND SCALES. IN MOST CASES THE INFORMATION HAS NOT BEEN FIELD VERIFIED. USE THIS MAP FOR GENERAL PLANNING PURPOSES ONLY.



1 inch = 1,000 feet

D