

# AERIAL MAP

File: 24-002501-ZA / 24-002877-ZA  
 Address: 1950 Benton Blvd &  
 76 Highlands Blvd. Savannah, Ga  
 Aldermanic District: 1 - Lanier  
 Commission District: 8 - Adams  
 Neighborhood: See Map  
 Property ID: PIN: 21016 02066,  
 21016 02067, 01017

\* Newly annexed parcels may need  
 Aldermanic & County Commission District  
 determination

Date: 11/26/2024



CHATHAM COUNTY - SAVANNAH  
**METROPOLITAN PLANNING COMMISSION**  
 110 E. STATE ST. SAVANNAH, GA 31412-8246 PHONE 912-651-1440



THIS MAP IS A COMPILATION OF INFORMATION FROM VARIOUS SOURCES AND SCALES. IN MOST CASES THE INFORMATION HAS NOT BEEN FIELD VERIFIED. USE THIS MAP FOR GENERAL PLANNING PURPOSES ONLY.



1 inch = 900 feet

D

# FUTURE LAND USE

File: 24-002501-ZA / 24-002877-ZA  
 Address: 1950 Benton Blvd & 76 Highlands Blvd. Savannah, Ga  
 Aldermanic District: 1 - Lanier  
 Commission District: 8 - Adams  
 Neighborhood: See Map  
 Property ID: PIN: 21016 02066, 21016 02067, 01017

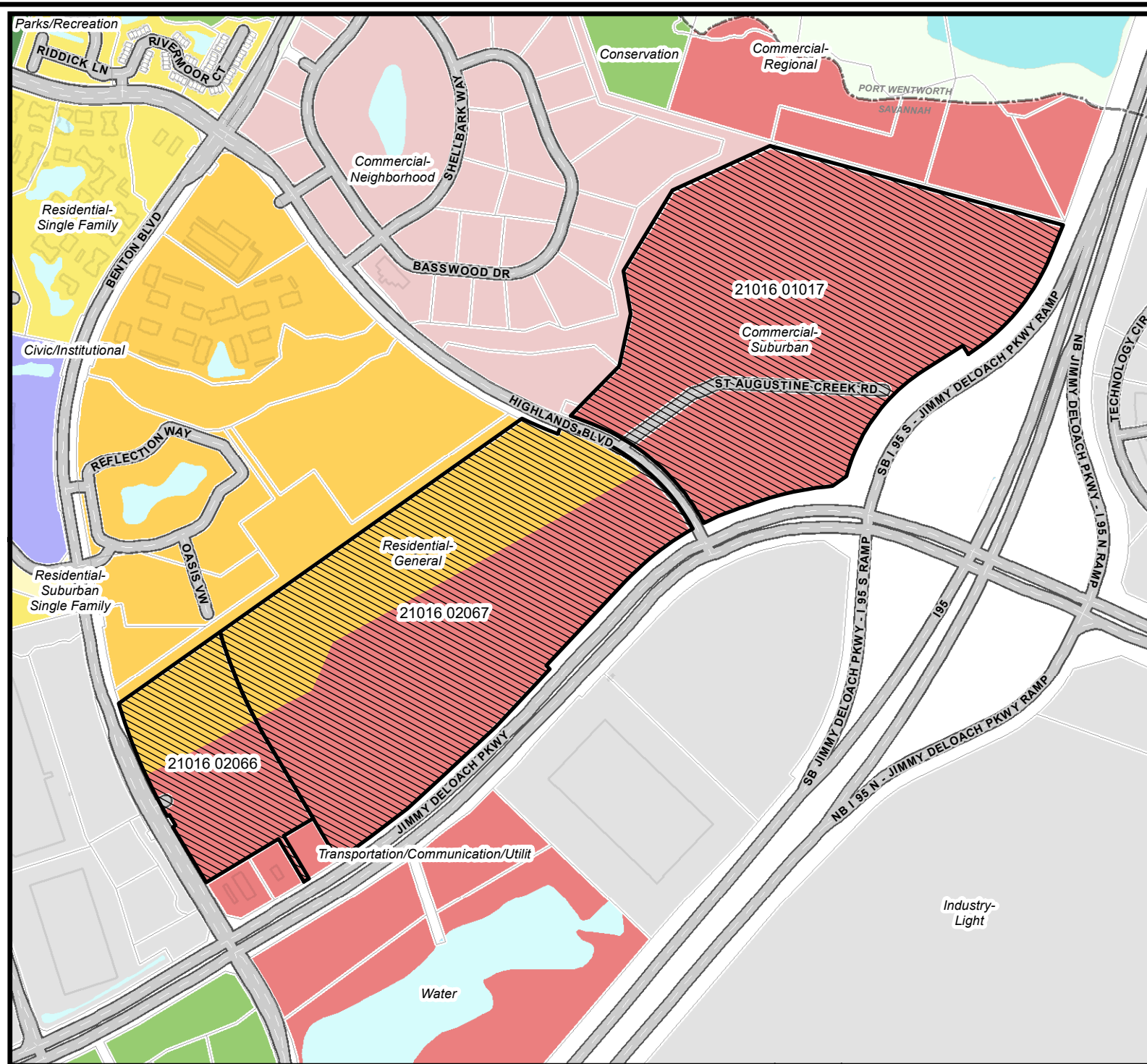
\* Newly annexed parcels may need Aldermanic & County Commission District determination

- Open Water
- Commercial- Neighborhood
- Commercial- Suburban
- Commercial- Regional
- Residential- Suburban Single Family
- Residential- Single Family
- Residential- General
- Industry- Light
- Civic/Institutional
- Transportation/Communication/Utilit
- Parks/Recreation
- Conservation

Date: 11/26/2024



CHATHAM COUNTY - SAVANNAH  
**METROPOLITAN PLANNING COMMISSION**  
 110 E. STATE ST. SAVANNAH, GA 31412-8246 PHONE 912-651-1440



THIS MAP IS A COMPILATION OF INFORMATION FROM VARIOUS SOURCES AND SCALES. IN MOST CASES THE INFORMATION HAS NOT BEEN FIELD VERIFIED. USE THIS MAP FOR GENERAL PLANNING PURPOSES ONLY.



1 inch = 900 feet

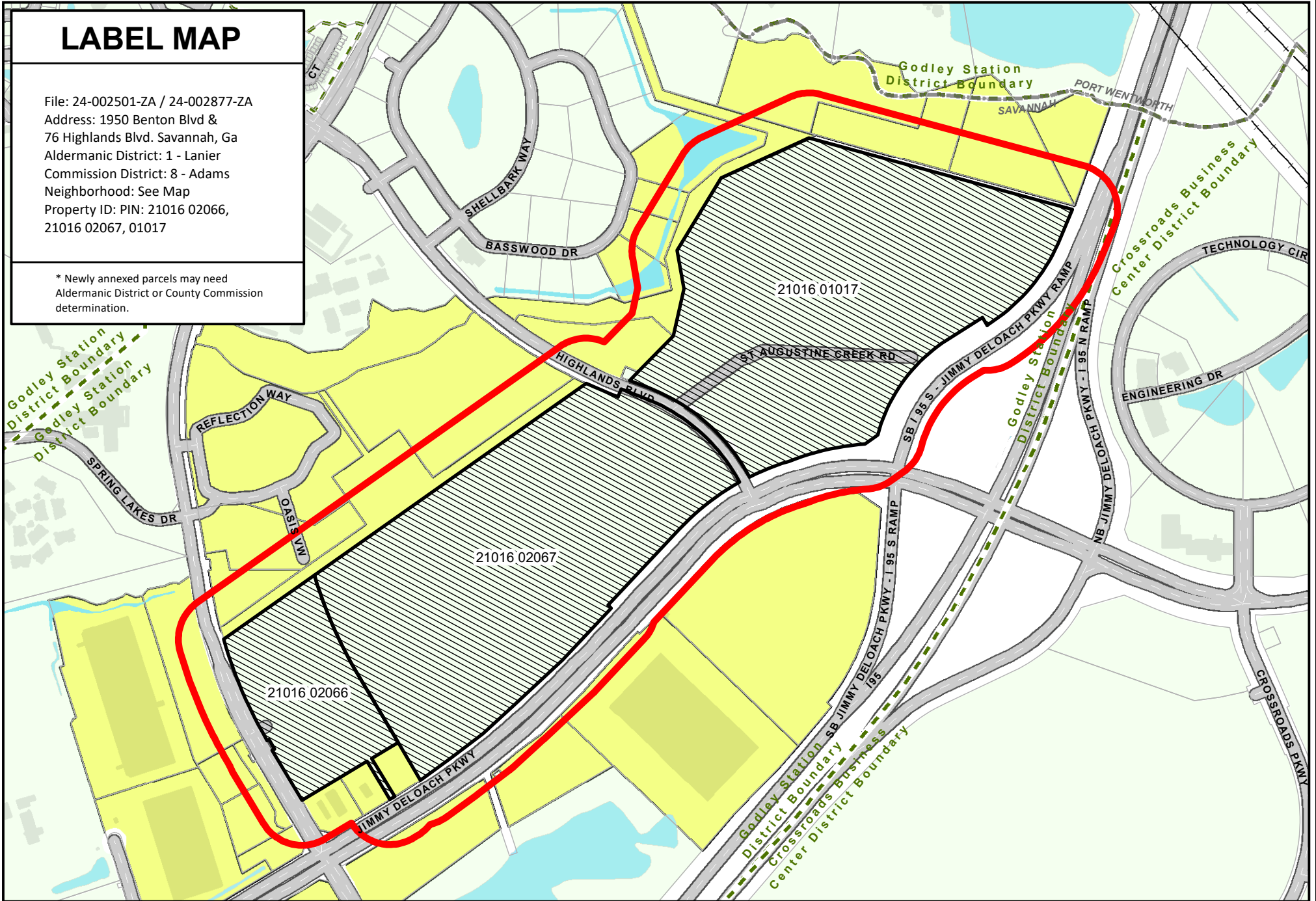
D

# LABEL MAP

File: 24-002501-ZA / 24-002877-ZA  
Address: 1950 Benton Blvd &  
76 Highlands Blvd. Savannah, Ga  
Aldermanic District: 1 - Lanier  
Commission District: 8 - Adams  
Neighborhood: See Map  
Property ID: PIN: 21016 02066,  
21016 02067, 01017

\* Newly annexed parcels may need  
Aldermanic District or County Commission  
determination.

Godley Station  
District Boundary  
Godley Station  
District Boundary



THIS MAP IS A COMPILATION OF INFORMATION FROM VARIOUS SOURCES AND SCALES. IN MOST CASES THE INFORMATION HAS NOT BEEN FIELD VERIFIED.  
**USE THIS MAP FOR GENERAL PLANNING PURPOSES ONLY.**



Date: 11/26/2024

1 inch = 900 feet



CHATHAM COUNTY - SAVANNAH  
**METROPOLITAN PLANNING COMMISSION**  
110 E. STATE ST. SAVANNAH, GA 31412-8246 PHONE 912-651-1440



# ZONING MAP

WITH TAX PARCELS

File: 24-002501-ZA / 24-002877-ZA  
 Address: 1950 Benton Blvd & 76 Highlands Blvd. Savannah, Ga  
 Aldermanic District: 1 - Lanier  
 Commission District: 8 - Adams  
 Neighborhood: See Map  
 Property ID: PIN: 21016 02066, 21016 02067, 01017

\* Newly annexed parcels may need Aldermanic & County Commission District determination



Date: 11/26/2024



CHATHAM COUNTY - SAVANNAH  
**METROPOLITAN PLANNING COMMISSION**  
 110 E. STATE ST. SAVANNAH, GA 31412-8246 PHONE 912-651-1440

THIS MAP IS A COMPILATION OF INFORMATION FROM VARIOUS SOURCES AND SCALES. IN MOST CASES THE INFORMATION HAS NOT BEEN FIELD VERIFIED. USE THIS MAP FOR GENERAL PLANNING PURPOSES ONLY.



1 inch = 900 feet

D