

VICINITY MAP

File: 26-002038-ZA Land Use
 File: 26-002039-ZA Zoning
 Address: 912 Drayton St.
 Savannah, Ga
 Aldermanic District: 2 - Leggett
 Commission District: 2 - Hodge
 Neighborhood: See Map
 Property ID: 20044 20008
 Type: Zoning/Land Use

NOTE:
 See original petition file for more details regarding specific petition property boundary delineations
 Newly annexed parcels may need Aldermanic & County Commission District determination

THIS MAP IS A COMPILATION OF INFORMATION FROM VARIOUS SOURCES AND SCALES. IN MOST CASES THE INFORMATION HAS NOT BEEN FIELD VERIFIED.
USE THIS MAP FOR GENERAL PLANNING PURPOSES ONLY.



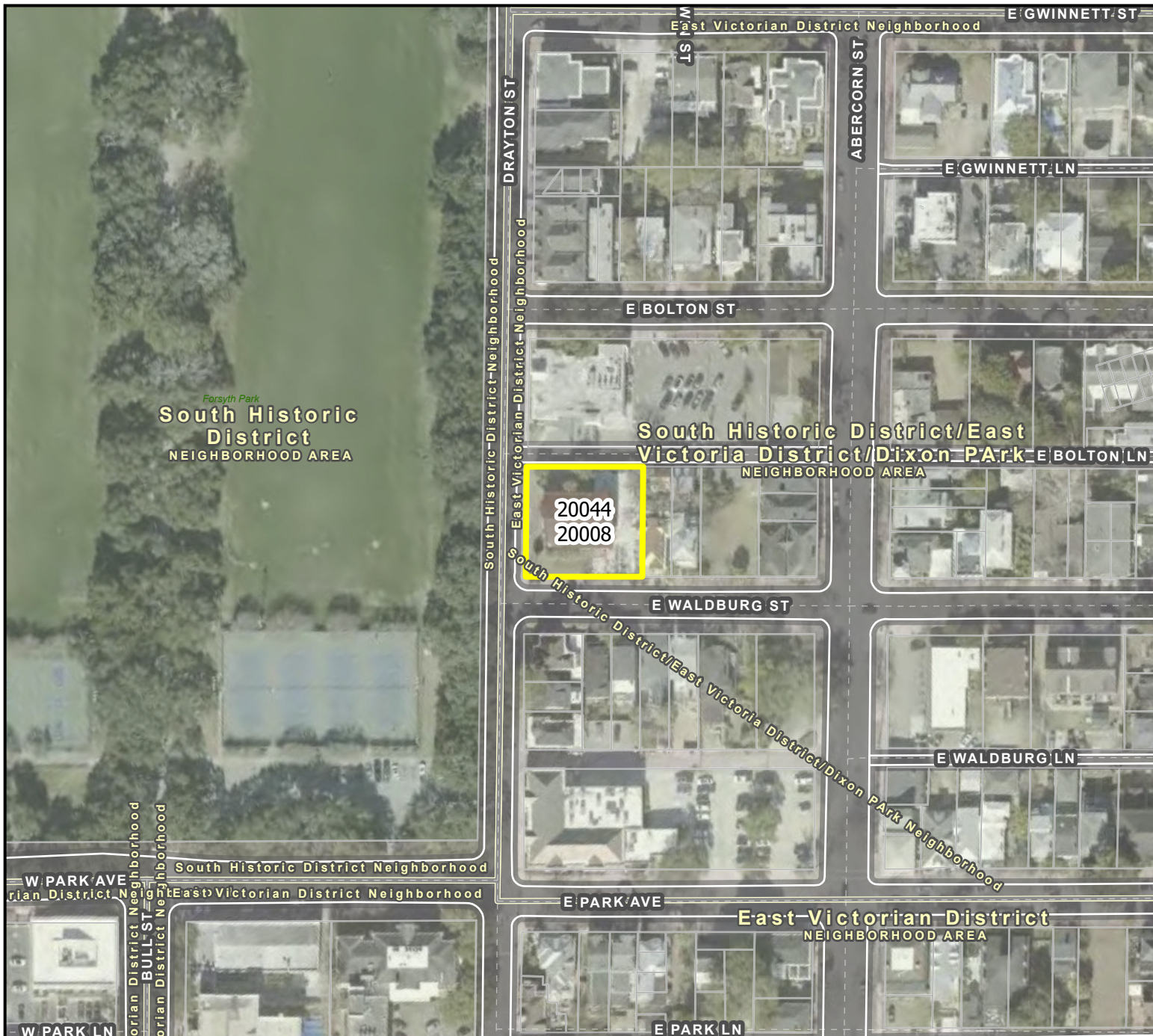
SCALE:
 1" = 800 feet



CHATHAM COUNTY - SAVANNAH
METROPOLITAN PLANNING COMMISSION
 110 E. STATE ST. SAVANNAH, GA 31412-8246 PHONE 912-651-1440

AERIAL MAP

File: 26-002038-ZA Land Use
 File: 26-002039-ZA Zoning
 Address: 912 Drayton St.
 Savannah, Ga
 Aldermanic District: 2 - Leggett
 Commission District: 2 - Hodge
 Neighborhood: See Map
 Property ID: 20044 20008
 Type: Zoning/Land Use



NOTE:
 See original petition file for more details regarding specific petition property boundary delineations
 Newly annexed parcels may need Aldermanic & County Commission District determination

THIS MAP IS A COMPILATION OF INFORMATION FROM VARIOUS SOURCES AND SCALES. IN MOST CASES THE INFORMATION HAS NOT BEEN FIELD VERIFIED.
USE THIS MAP FOR GENERAL PLANNING PURPOSES ONLY.



SCALE:
 1" = 150 feet






CHATHAM COUNTY - SAVANNAH
METROPOLITAN PLANNING COMMISSION
 110 E. STATE ST. SAVANNAH, GA 31412-8246 PHONE 912-651-1440

FLU MAP

(FUTURE LAND USE)

File: 26-002038-ZA Land Use
 File: 26-002039-ZA Zoning
 Address: 912 Drayton St.
 Savannah, Ga
 Aldermanic District: 2 - Leggett
 Commission District: 2 - Hodge
 Neighborhood: See Map
 Property ID: 20044 20008
 Type: Zoning/Land Use

-  Traditional Commercial
-  Traditional Neighborhood
-  Parks/Recreation

NOTE:
 See original petition file for more details regarding specific petition property boundary delineations
 Newly annexed parcels may need Aldermanic & County Commission District determination



Forsyth Park
**South
 Historic District**
 NEIGHBORHOOD AREA

**South Historic District/East
 Victoria District/Dixon Park**
 NEIGHBORHOOD AREA

W PARK AVE

**West
 Victorian District**
 NEIGHBORHOOD AREA

**East Victorian
 District**
 NEIGHBORHOOD AREA

W PARK LN

THIS MAP IS A COMPILATION OF INFORMATION FROM VARIOUS SOURCES AND SCALES. IN MOST CASES THE INFORMATION HAS NOT BEEN FIELD VERIFIED.

USE THIS MAP FOR GENERAL PLANNING PURPOSES ONLY.



Date: 4/23/2026

SCALE:
 1" = 150 feet



CHATHAM COUNTY - SAVANNAH
METROPOLITAN PLANNING COMMISSION
 110 E. STATE ST. SAVANNAH, GA 31412-8246 PHONE 912-651-1440

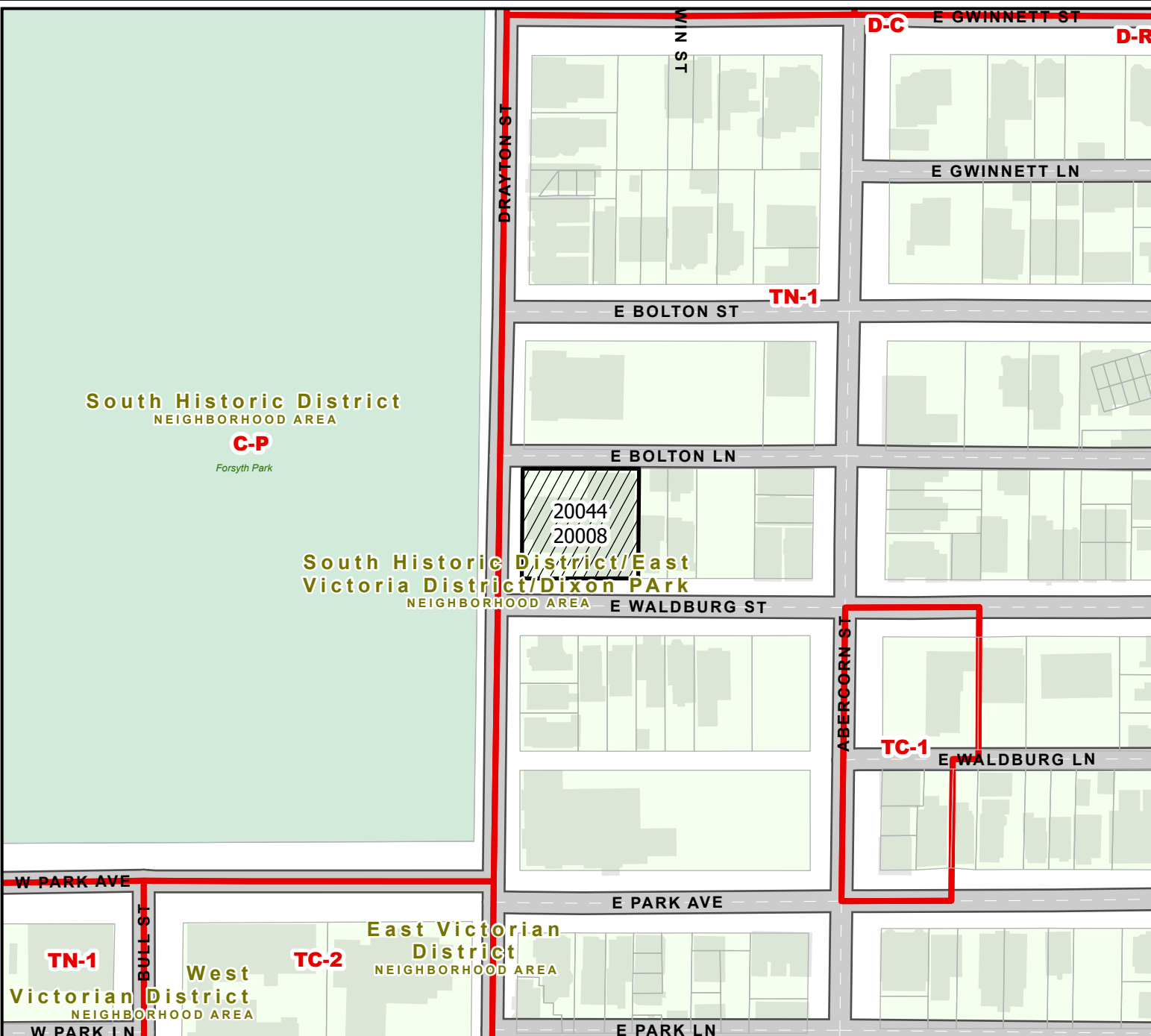
ZONING MAP

WITH PROPERTY LINES

File: 26-002038-ZA Land Use
 File: 26-002039-ZA Zoning
 Address: 912 Drayton St.
 Savannah, Ga
 Aldermanic District: 2 - Leggett
 Commission District: 2 - Hodge
 Neighborhood: See Map
 Property ID: 20044 20008
 Type: Zoning/Land Use

 ZONING

NOTE:
 See original petition file for more details regarding specific petition property boundary delineations
 Newly annexed parcels may need Aldermanic & County Commission District determination



THIS MAP IS A COMPILATION OF INFORMATION FROM VARIOUS SOURCES AND SCALES. IN MOST CASES THE INFORMATION HAS NOT BEEN FIELD VERIFIED.
USE THIS MAP FOR GENERAL PLANNING PURPOSES ONLY.



SCALE:
 1" = 150 feet



CHATHAM COUNTY - SAVANNAH
METROPOLITAN PLANNING COMMISSION
 110 E. STATE ST. SAVANNAH, GA 31412-8246 PHONE 912-651-1440