

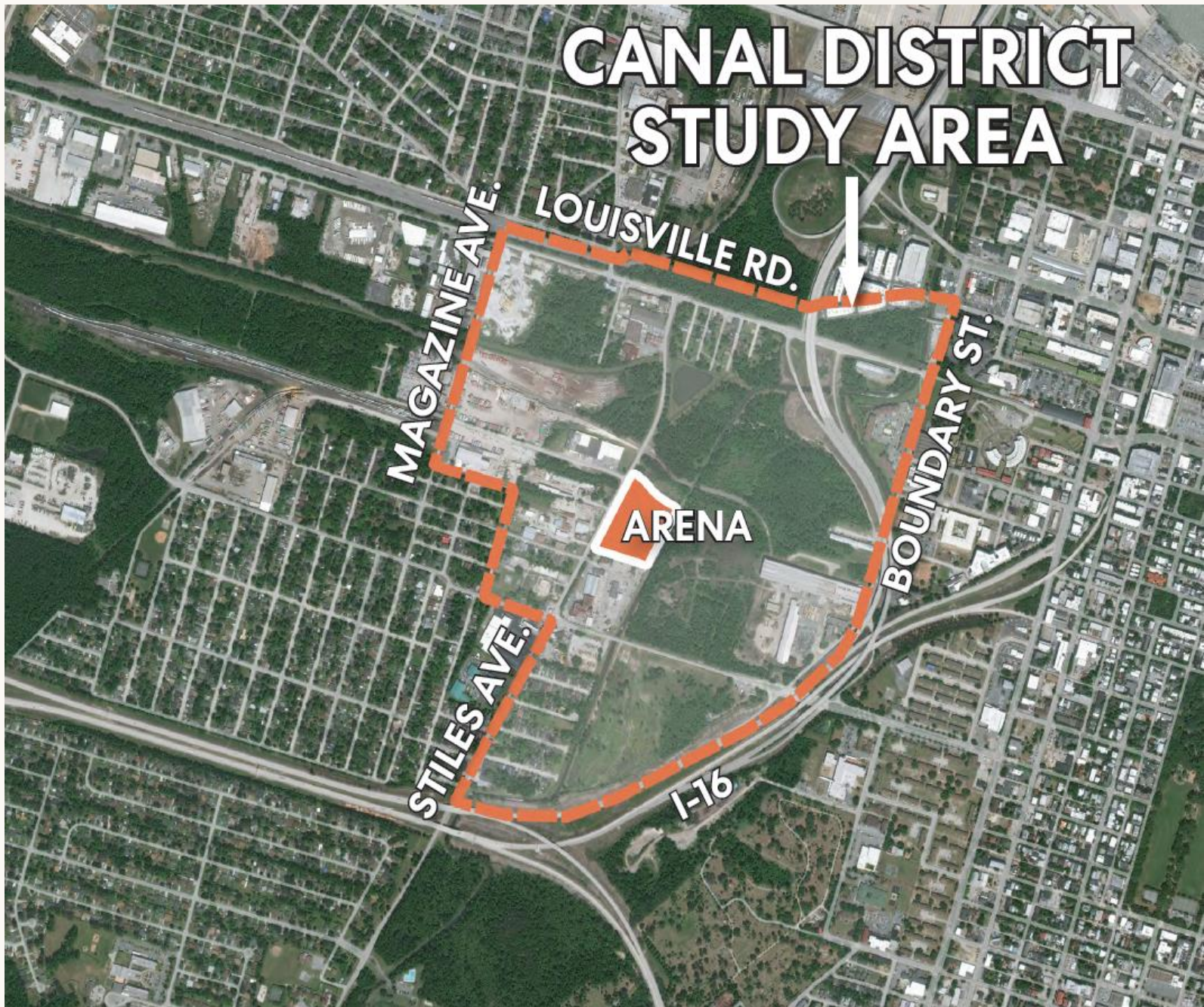
# Savannah Canal District Master Plan

September 10, 2020





# CANAL DISTRICT STUDY AREA







# Vision

**The Canal District is new common ground in Savannah.  
It protects historic communities, rebuilds nature,  
elevates civic life, and allows the City to grow.**

**The Master Plan seeks to coordinate actions and  
communication into a shared perspective, empowering  
Savannah residents and leadership to work together  
to develop resilient places and a stronger City.**

# Built Around Two Geographies

The Canal District Master Plan recognizes that the impact of future action will extend beyond the District's boundaries.

①

**A Master Plan for  
the Canal District**

②

**A Set of Policies  
and Actions for  
the Canal District  
Neighborhoods**

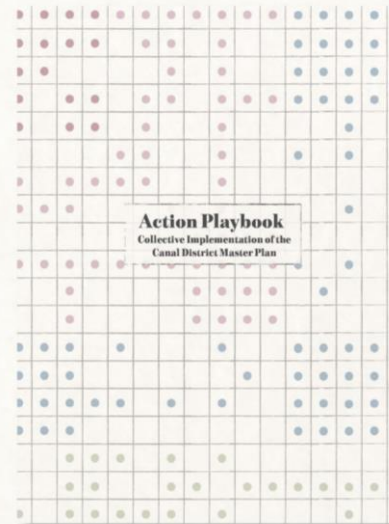






## 01 The Master Plan

A document that focuses on the process, vision, and design recommendations for the Canal District



## 02 The Action Playbook

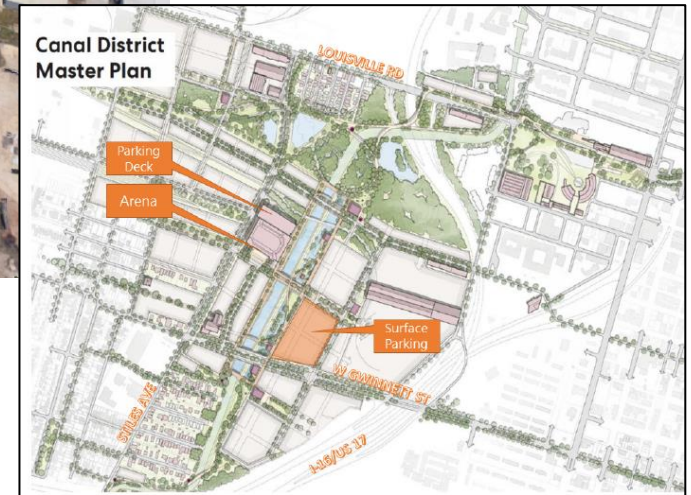
A document that focuses on the actions needed to implement the Master Plan in an equitable and inclusive way



# Parking: Gwinnett Street Lot



- 2,000 spaces
- Access from Gwinnett Street
- Available for daytime use



# Parking: Arena Garage

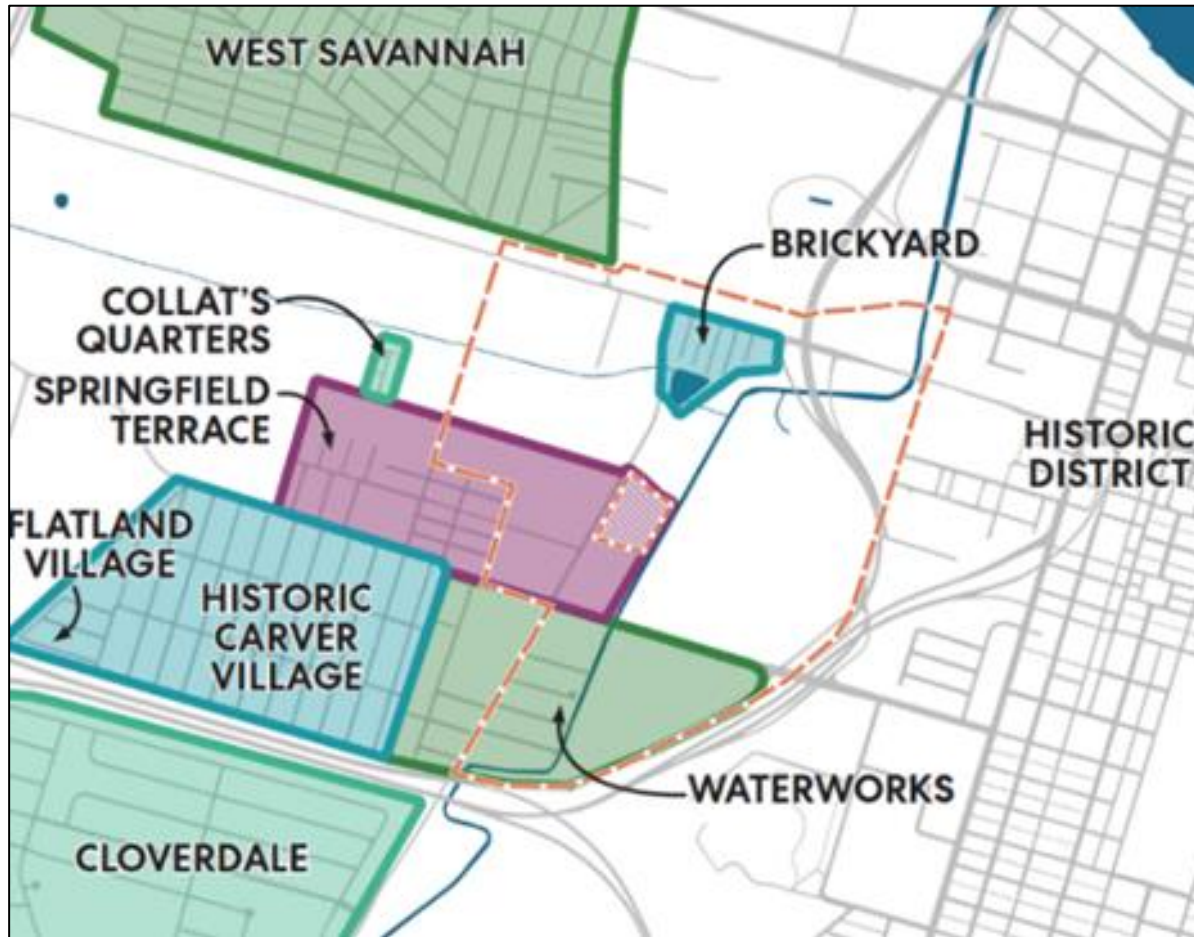


- 400 Spaces
- ADA parking
- Suite/club seat holders
- General daytime use





# Parking: Event Enforcement Zones



## Phase I:

- Historic Carver Village
- Waterworks
- Brickyard
- Springfield Terrace

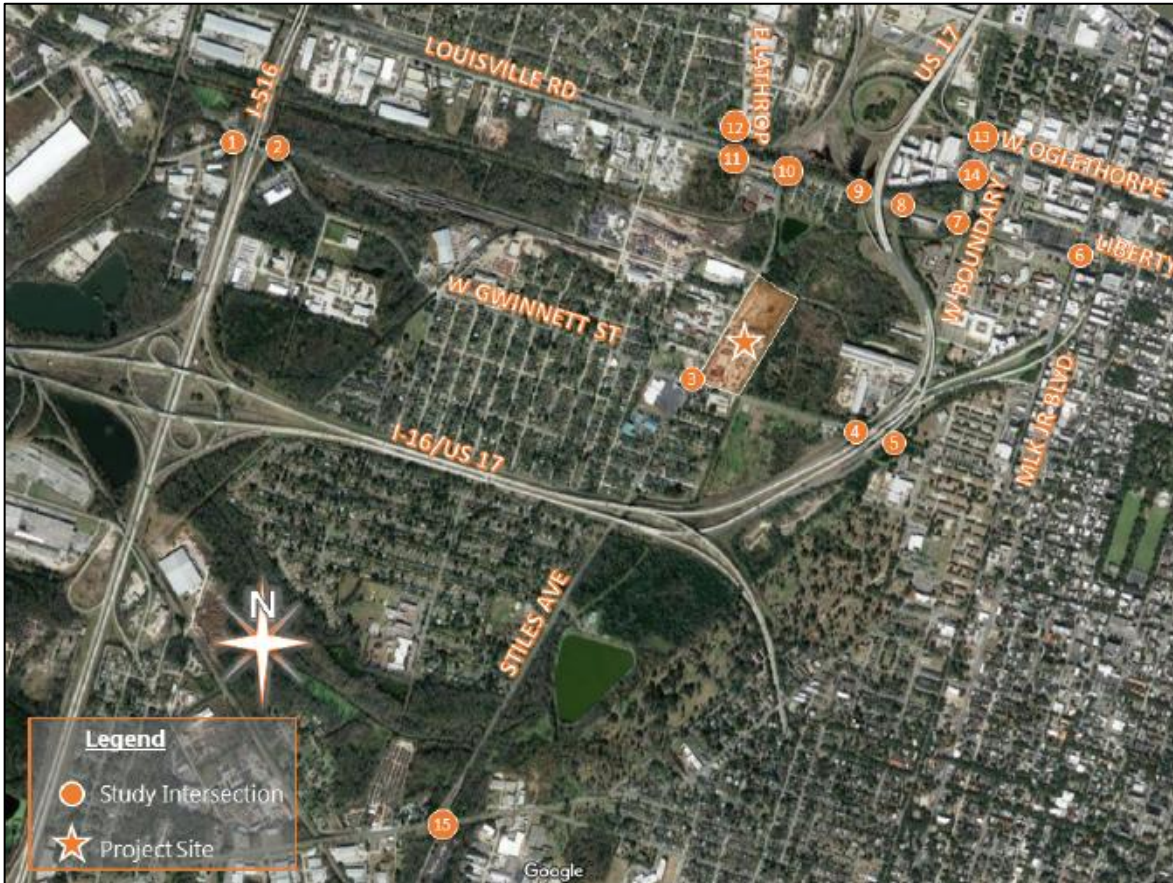
## Phase II (if Necessary):

- Cloverdale
- West Savannah
- Collat's Quarters
- Flatland Village





# Traffic Impact Analysis

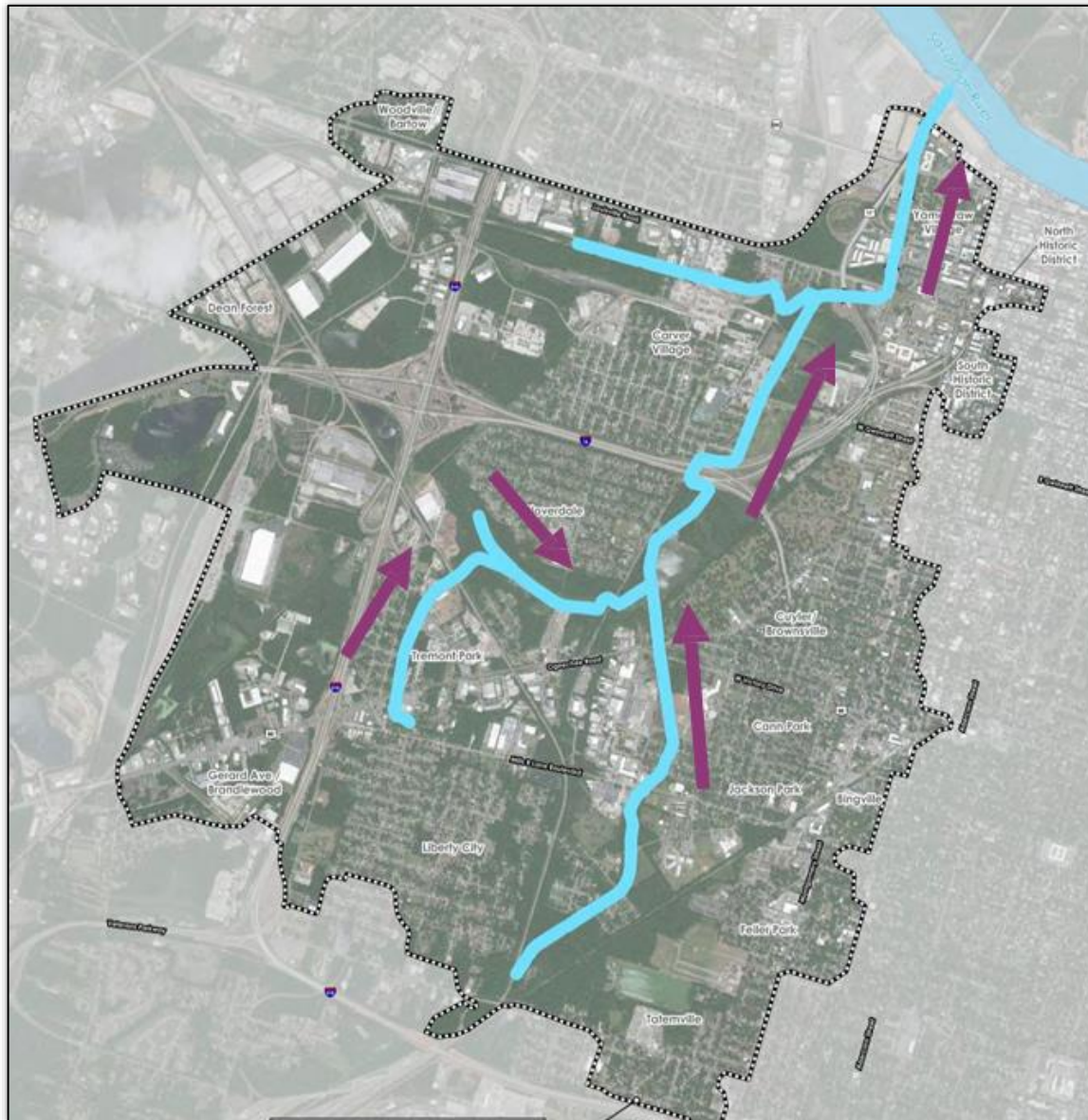


- Existing Conditions
- Traffic projections
- Capacity analysis
- Recommendations

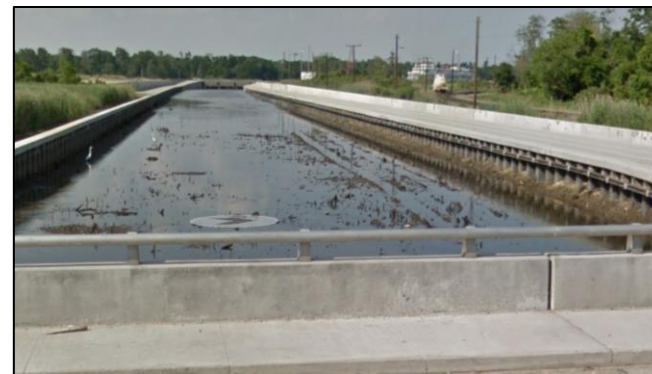
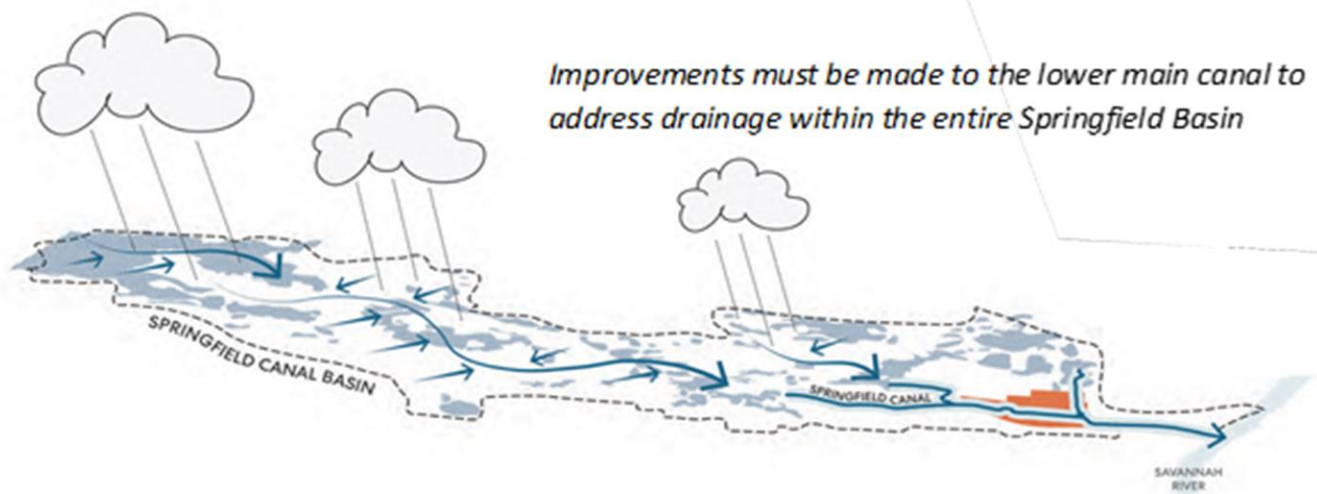




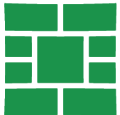
# Springfield Canal Drainage Basin
















# Springfield Canal and Canal District Improvements

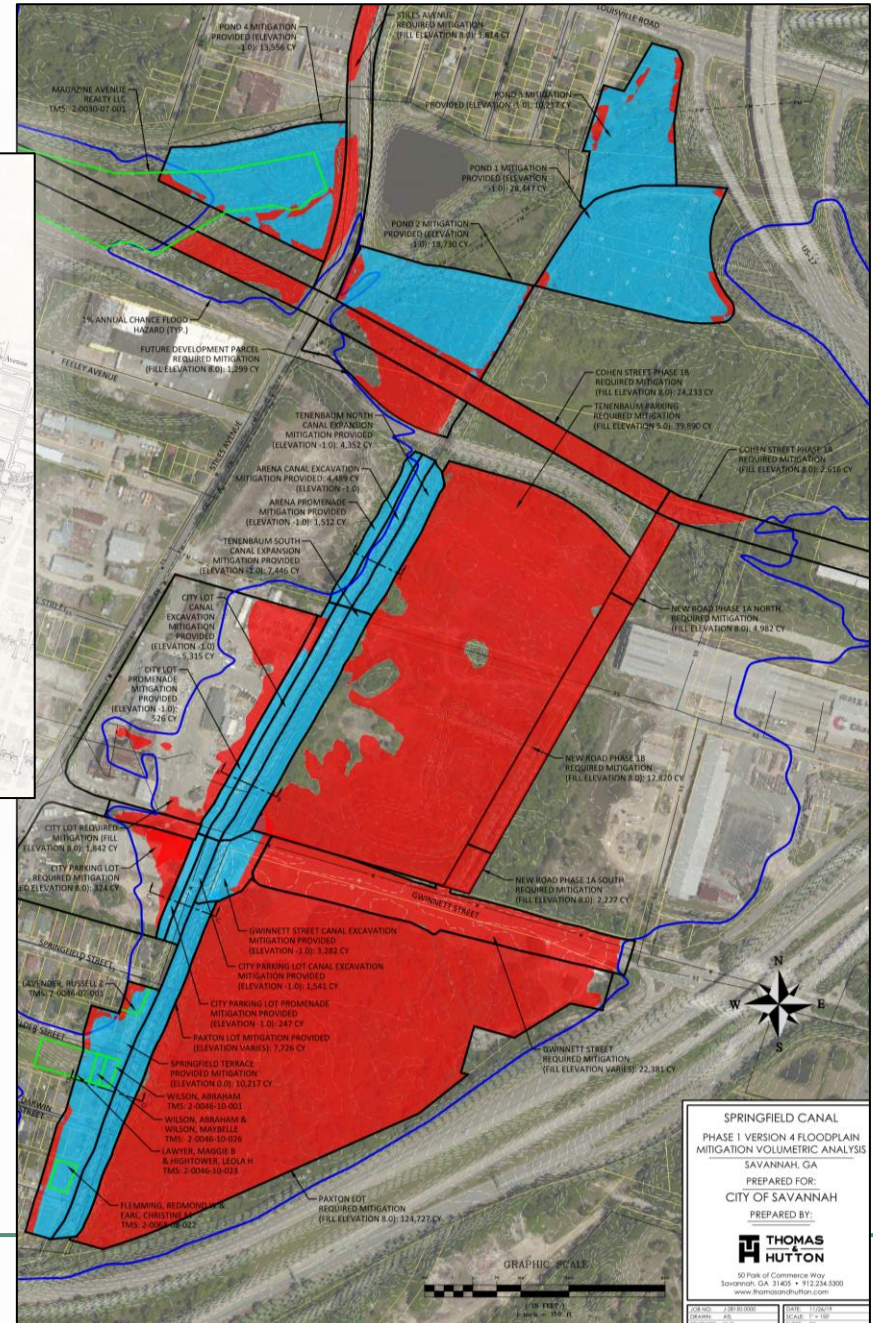
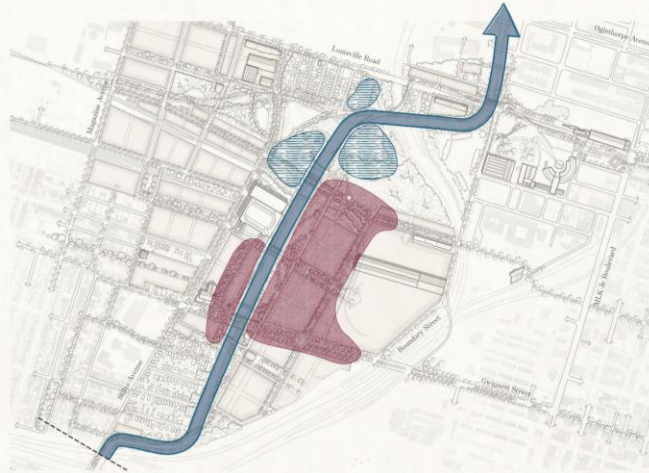
The Savannah Canal District

## Mitigates Flood Concerns

The Canal District Master Plan manage the rise and flow of water while bringing out the natural features of the landscape.

### Floodplain Mitigation

-  Cut Earth for Flood Plain Mitigation
-  Fill Areas for Infrastructure & Redevelopment
-  Widening to Convey 100-Year Flood





An aerial sketch of a city district, likely the Canal District. The sketch shows a network of streets, various types of buildings (residential, commercial, industrial), and a central canal or waterway. The style is a loose, artistic line drawing with some color washes. A brown rectangular box is overlaid on the top right of the image, containing text and a bulleted list.

## Once Canal District Master Plan adopted (Item #27 on Agenda):

- Prioritize capital improvement projects
- Secure funding for implementation of priorities identified
- Coordinate with MPC on Zoning and Land-Use Recommendations