

VICINITY MAP

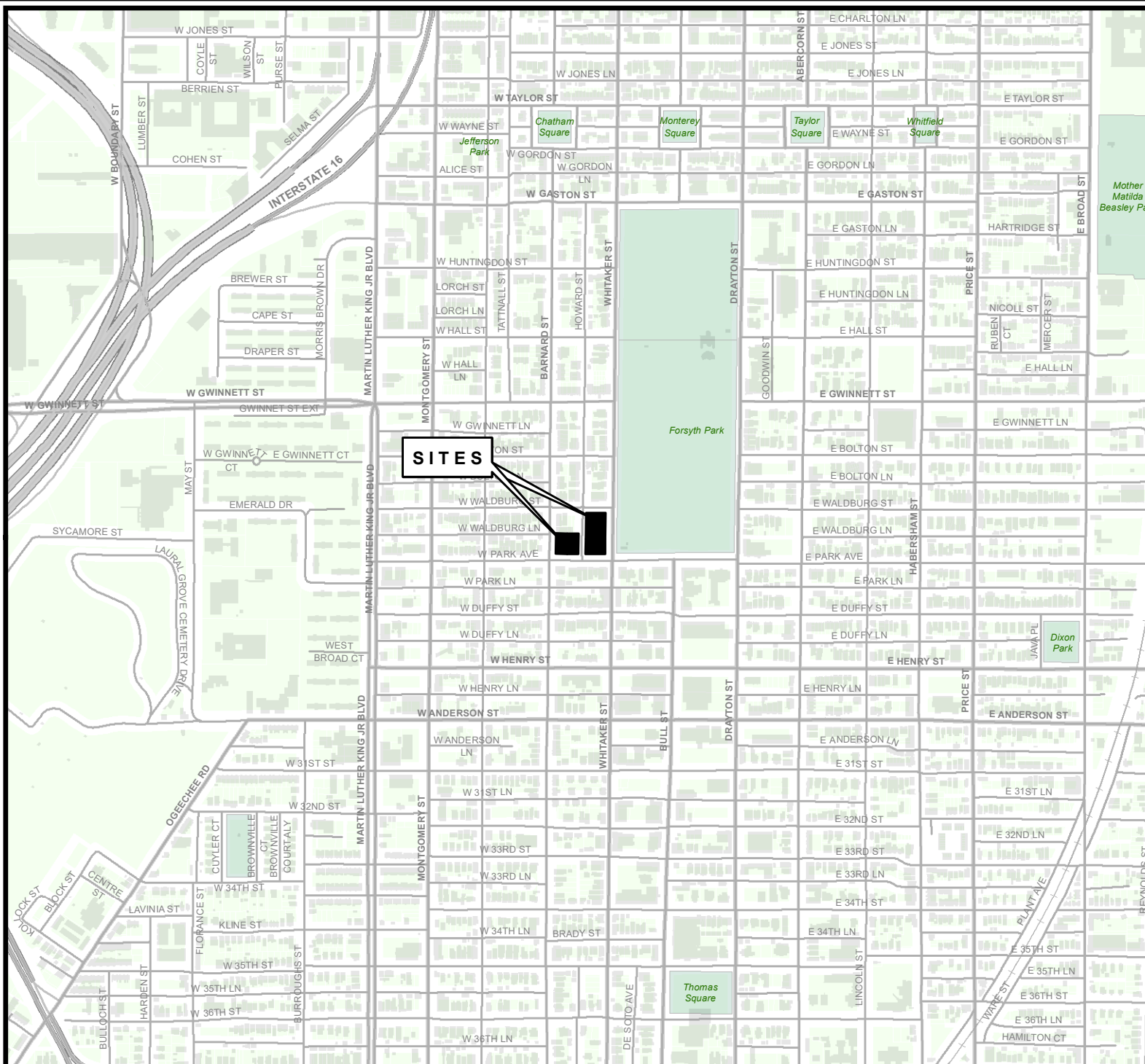
File: 24-005816-ZA (Land Use)
 File: 24-005815-ZA (Zoning)
 Address: 1001, 1015 Whitaker St. & 120, 124 W. Park Ave.
 Savannah, Ga
 Aldermanic District: 2 - Leggett
 Commission District: 2 - Hodge
 Neighborhood: See Map
 Property ID: 20044 25001,-002, -003, & 20044 24002

* Newly annexed parcels may need Aldermanic & County Commission District determination

Date: 10/30/2024



CHATHAM COUNTY - SAVANNAH
METROPOLITAN PLANNING COMMISSION
 110 E. STATE ST. SAVANNAH, GA 31412-8246 PHONE 912-651-1440



THIS MAP IS A COMPILATION OF INFORMATION FROM VARIOUS SOURCES AND SCALES. IN MOST CASES THE INFORMATION HAS NOT BEEN FIELD VERIFIED. USE THIS MAP FOR GENERAL PLANNING PURPOSES ONLY.



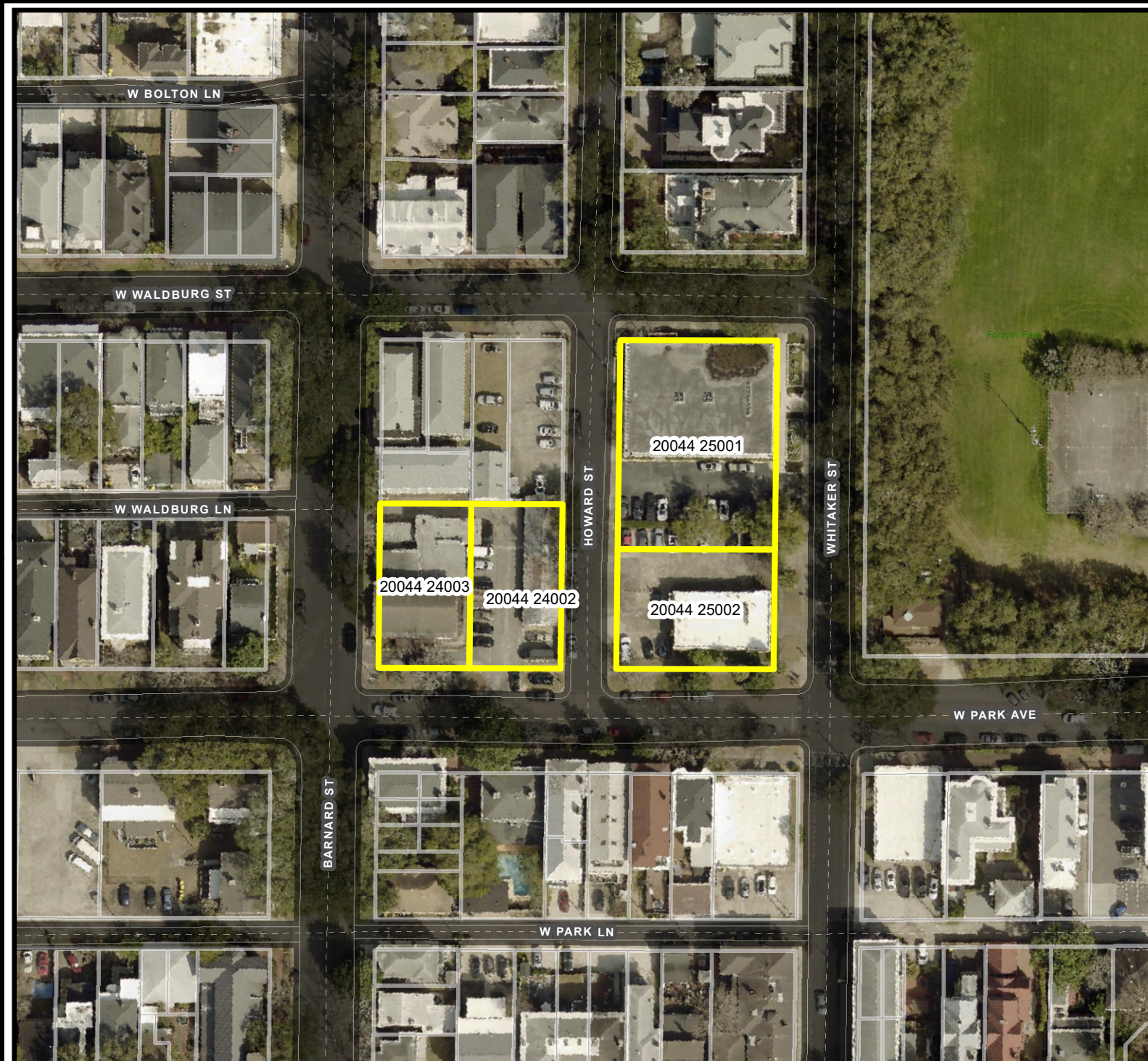
1 inch = 800 feet

D

AERIAL MAP

File: 24-005816-ZA (Land Use)
File: 24-005815-ZA (Zoning)
Address: 1001, 1015 Whitaker St. &
120, 124 W. Park Ave.
Savannah, Ga
Aldermanic District: 2 - Leggett
Commission District: 2 - Hodge
Neighborhood: See Map
Property ID: 20044 25001, -002, -003, &
20044 24002

* Newly annexed parcels may need
Aldermanic & County Commission District
determination



THIS MAP IS A COMPILATION OF INFORMATION FROM VARIOUS SOURCES AND SCALES. IN MOST CASES THE INFORMATION HAS NOT BEEN FIELD VERIFIED. USE THIS MAP FOR GENERAL PLANNING PURPOSES ONLY.



1 inch = 100 feet

D



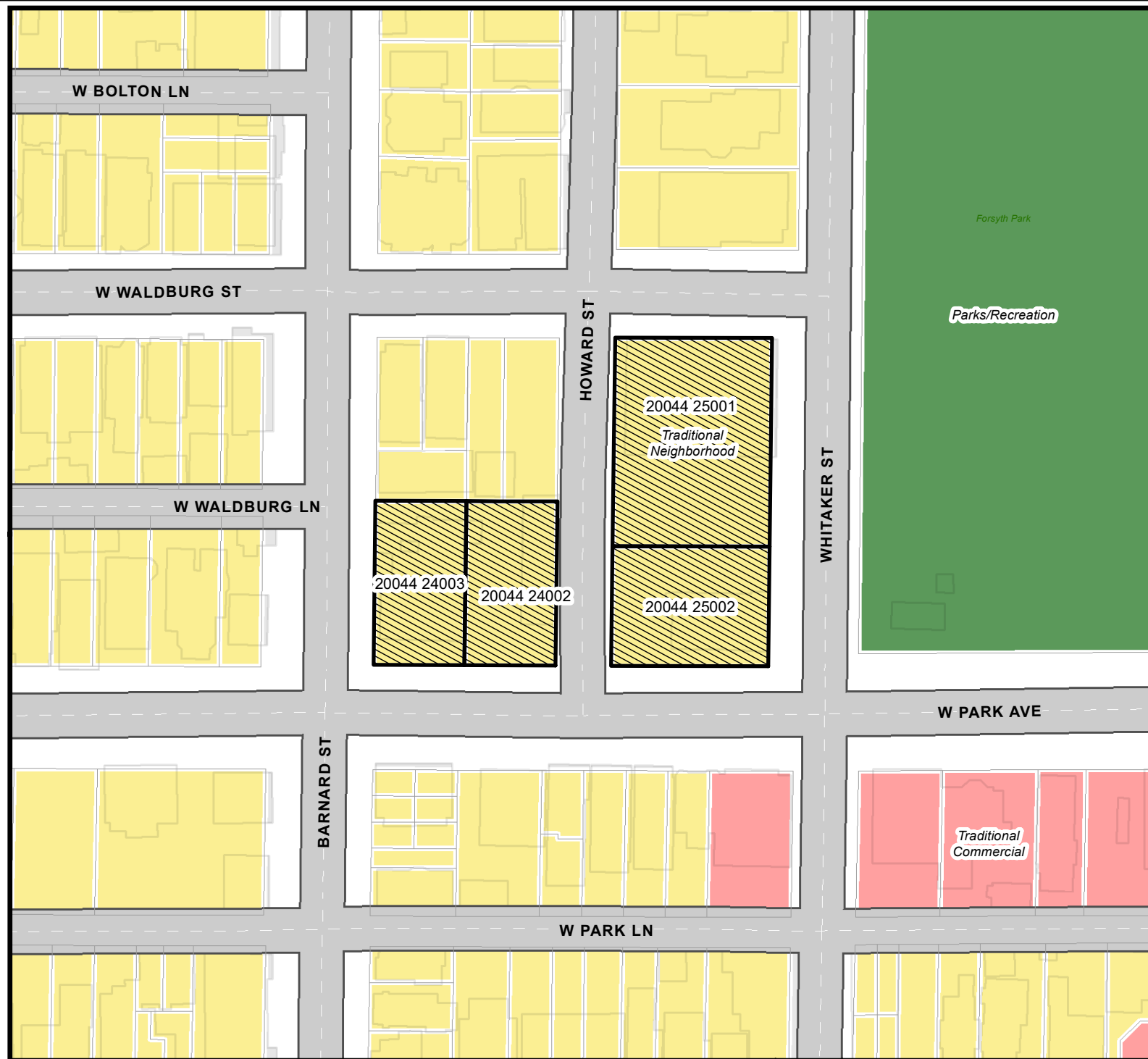
Date: 10/30/2024

CHATHAM COUNTY - SAVANNAH
METROPOLITAN PLANNING COMMISSION
110 E. STATE ST. SAVANNAH, GA 31412-8246 PHONE 912-651-1440

FUTURE LAND USE

File: 24-005816-ZA (Land Use)
 File: 24-005815-ZA (Zoning)
 Address: 1001, 1015 Whitaker St. & 120, 124 W. Park Ave.
 Savannah, Ga
 Aldermanic District: 2 - Leggett
 Commission District: 2 - Hodge
 Neighborhood: See Map
 Property ID: 20044 25001, -002, -003, & 20044 24002

* Newly annexed parcels may need Aldermanic & County Commission District determination



- Traditional Commercial
- Traditional Neighborhood
- Parks/Recreation

Date: 10/30/2024



CHATHAM COUNTY - SAVANNAH
METROPOLITAN PLANNING COMMISSION
 110 E. STATE ST. SAVANNAH, GA 31412-8246 PHONE 912-651-1440

THIS MAP IS A COMPILATION OF INFORMATION FROM VARIOUS SOURCES AND SCALES. IN MOST CASES THE INFORMATION HAS NOT BEEN FIELD VERIFIED. USE THIS MAP FOR GENERAL PLANNING PURPOSES ONLY.



1 inch = 100 feet

D

ZONING MAP

WITH TAX PARCELS

File: 24-005816-ZA (Land Use)
File: 24-005815-ZA (Zoning)
Address: 1001, 1015 Whitaker St. &
120, 124 W. Park Ave.
Savannah, Ga
Aldermanic District: 2 - Leggett
Commission District: 2 - Hodge
Neighborhood: See Map
Property ID: 20044 25001, -002, -003, &
20044 24002

* Newly annexed parcels may need
Aldermanic & County Commission District
determination

 ZONING

Date: 10/30/2024



CHATHAM COUNTY - SAVANNAH
METROPOLITAN PLANNING COMMISSION
110 E. STATE ST. SAVANNAH, GA 31412-8246 PHONE 912-651-1440



THIS MAP IS A COMPILATION OF INFORMATION FROM VARIOUS SOURCES AND SCALES. IN MOST CASES THE INFORMATION HAS NOT BEEN FIELD VERIFIED. USE THIS MAP FOR GENERAL PLANNING PURPOSES ONLY.



1 inch = 100 feet

D