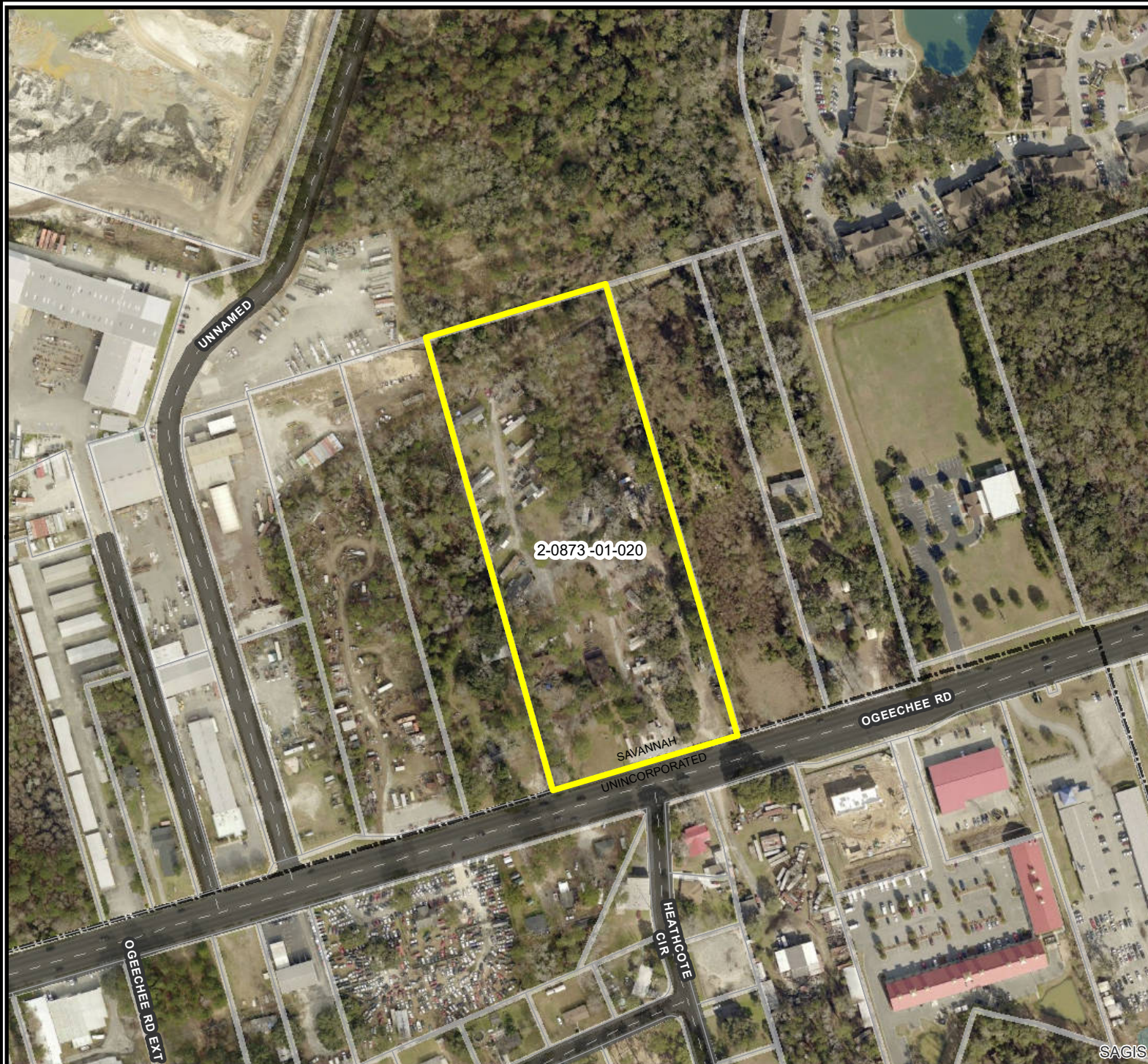


AERIAL MAP

FILE # 19-004404-ZA
Address: 4504 Ogeechee Rd.
Savannah, Ga
Aldermanic District: 1 (Van Johnson)
Commission District: 8 (Chester Ellis)
Neighborhood: Ogeechee/Heathcote
Area
PIN(s): see map



2-0873-01-020

UNNA MED

OGEECHEE RD

SAVANNAH
UNINCORPORATED

HEATHCOTE
CIR

OGEECHEE RD EXT

SAGIS

THIS MAP IS A COMPILATION OF INFORMATION FROM VARIOUS SOURCES AND SCALES. IN MOST CASES THE INFORMATION HAS NOT BEEN FIELD VERIFIED. USE THIS MAP FOR GENERAL PLANNING PURPOSES ONLY.



1 inch = 300 feet

D

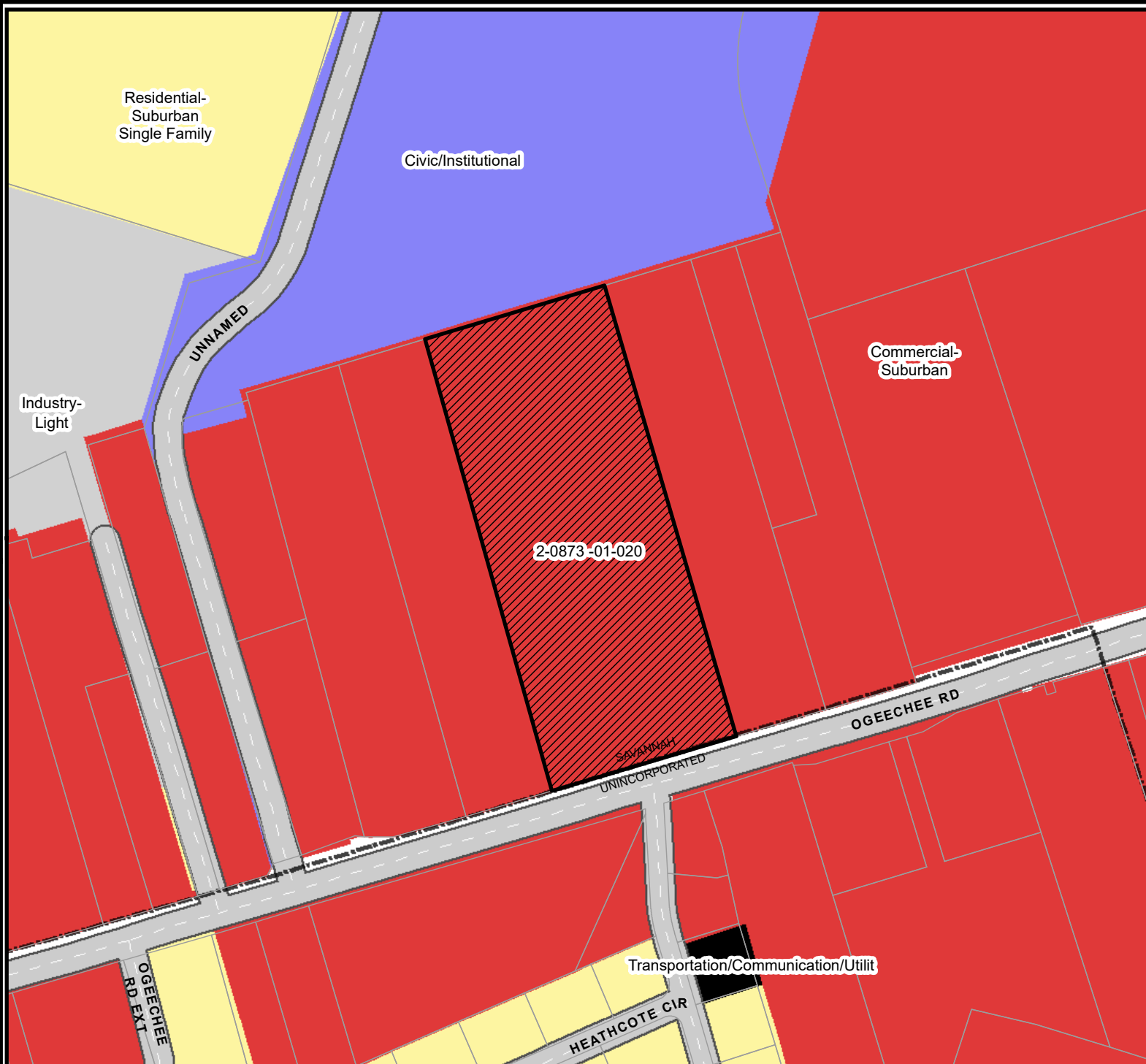


8/8/2019

CHATHAM COUNTY · SAVANNAH
METROPOLITAN PLANNING COMMISSION
110 E. STATE ST. SAVANNAH, GA 31412-8246 PHONE 912-651-1440

FUTURE LAND USE

FILE # 19-004404-ZA
 Address: 4504 Ogeechee Rd.
 Savannah, Ga
 Aldermanic District: 1 (Van Johnson)
 Commission District: 8 (Chester Ellis)
 Neighborhood: Ogeechee/Heathcote Area
 Area
 PIN(s): see map



- Downtown
- Downtown- Expansion
- Traditional Commercial
- Traditional Neighborhood
- Commercial- Neighborhood
- Commercial- Suburban
- Commercial- Regional
- Commercial- Marine
- Residential- Suburban Single Family
- Residential- Single Family
- Residential- General
- Planned Development
- Planned Campus
- Agriculture/Forestry
- Industry- Light
- Industry- Heavy
- Civic/Institutional
- Transportation/Communication/Utilit
- Parks/Recreation
- Conservation
- Conservation- Residential
- Tidal Marsh
- Open Water
- Transition
- Surface Mine
- Landfill
- Right of Way
- AICO+Marsh
- AICO+Water
- AICO+Industry- Light
- AICO+Right of Way
- AICO+Suburban Single Family Residential

THIS MAP IS A COMPILATION OF INFORMATION FROM VARIOUS SOURCES AND SCALES. IN MOST CASES THE INFORMATION HAS NOT BEEN FIELD VERIFIED. USE THIS MAP FOR GENERAL PLANNING PURPOSES ONLY.



1 inch = 300 feet

D



8/8/2019

CHATHAM COUNTY · SAVANNAH
METROPOLITAN PLANNING COMMISSION
 110 E. STATE ST. SAVANNAH, GA 31412-8246 PHONE 912-651-1440