

PUD MASTER PLAN
THE PINES

SAVANNAH, GEORGIA
March 28, 2019
LAST REVISED: 03/04/2025

PREPARED FOR:
FORESTAR (USA) REAL ESTATE GROUP INC.

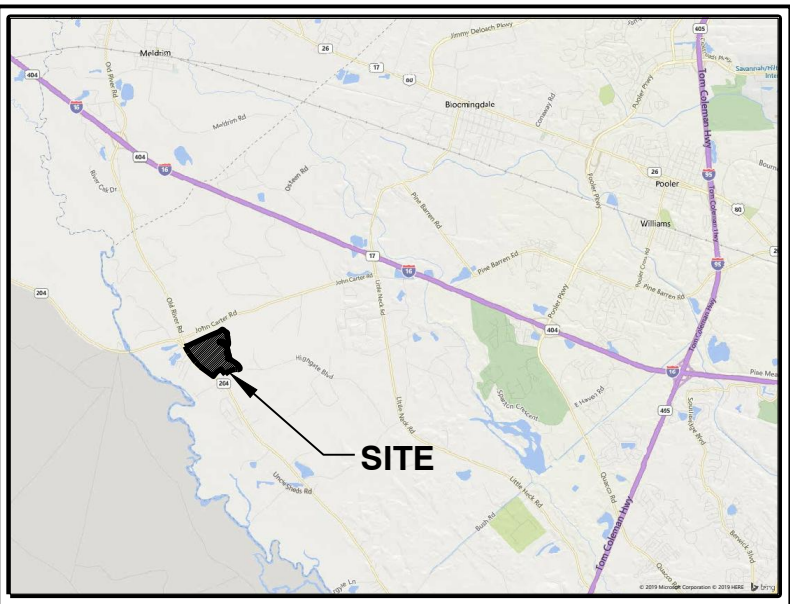
LEGEND:

- Single Family Lots
- Existing Wetland
- Townhome Lots
- Open Space
- Amenity
- Lagoons

OPEN SPACE:

Total Site Acreage:	+/- 200 acres
Total Site Open Space:	+/- 94 acres
Percentage Total Open Space:	+/- 47 %

*According to the New Hampstead PUD open space includes primary road buffers, perimeter buffers, parks, wetlands and wetland buffers. The development must contain 20% open space.



VICINITY MAP



50 Park of Commerce Way
Savannah, GA 31405 • 912.234.5300

www.thomasandhutton.com

This map illustrates a general plan of the development which is for discussion purposes only, does not limit or bind the owner/developer, and is subject to change and revision without prior written notice to the holder. Dimensions, boundaries and position locations are for illustrative purposes only and are subject to an accurate survey and property description.

COPYRIGHT © 2025 THOMAS & HUTTON



PUD MASTER PLAN
THE PINES

SAVANNAH, GEORGIA
March 28, 2019
LAST REVISED: 03/04/2025

PREPARED FOR:
FORESTAR (USA) REAL ESTATE GROUP INC.

LEGEND:

- Single Family Lots
- Existing Wetland
- Townhome Lots
- Open Space
- Amenity
- Lagoons

OPEN SPACE:

Total Site Acreage:	+/- 200 acres
Total Site Open Space:	+/- 94 acres
Percentage Total Open Space:	+/- 47 %

*According to the New Hampstead PUD open space includes primary road buffers, perimeter buffers, parks, wetlands and wetland buffers. The development must contain 20% open space.



VICINITY MAP

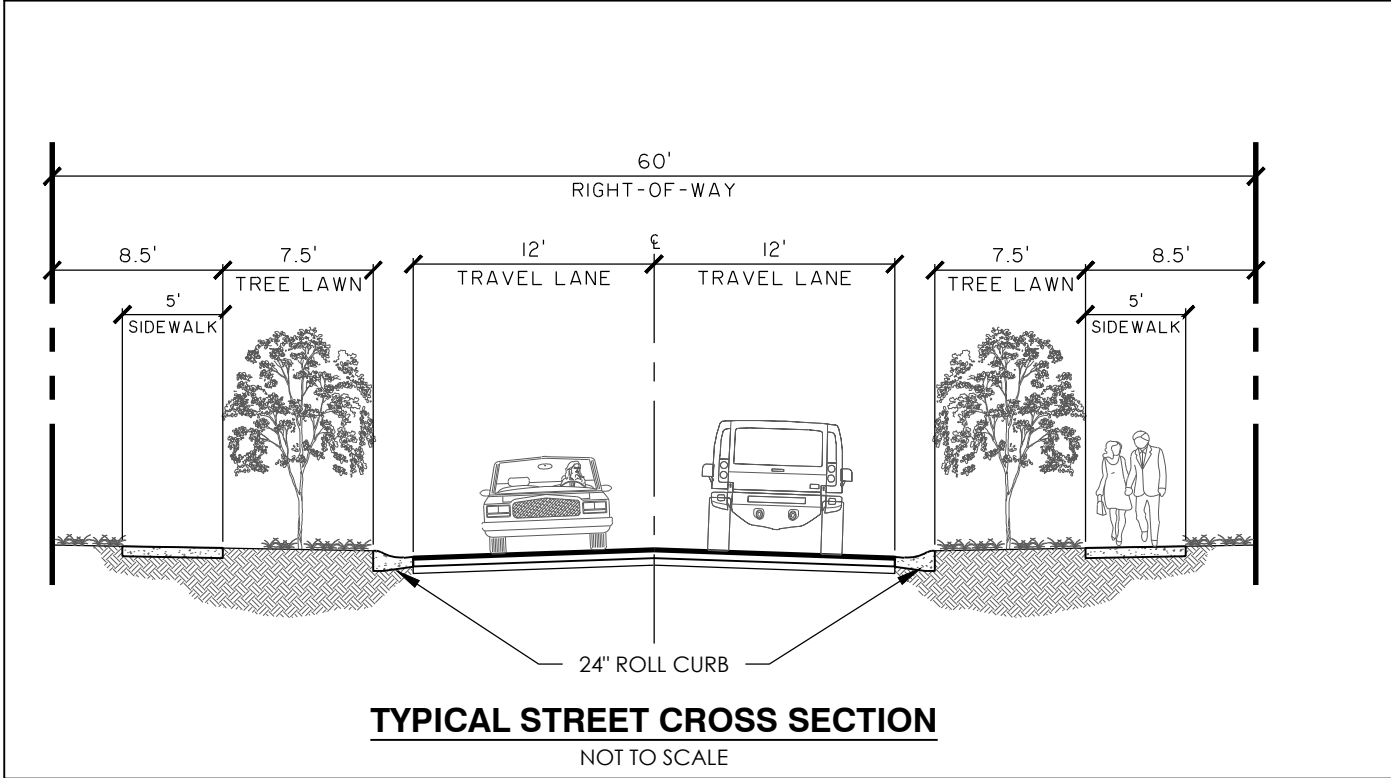


50 Park of Commerce Way
Savannah, GA 31405 • 912.234.5300

www.thomasandhutton.com

This map illustrates a general plan of the development which is for discussion purposes only, does not limit or bind the owner/developer, and is subject to change and revision without prior written notice to the holder. Dimensions, boundaries and position locations are for illustrative purposes only and are subject to an accurate survey and property description.

COPYRIGHT © 2025 THOMAS & HUTTON





PHASING PLAN THE PINES

SAVANNAH, GEORGIA
March 28, 2019
LAST REVISED: 03/04/2025

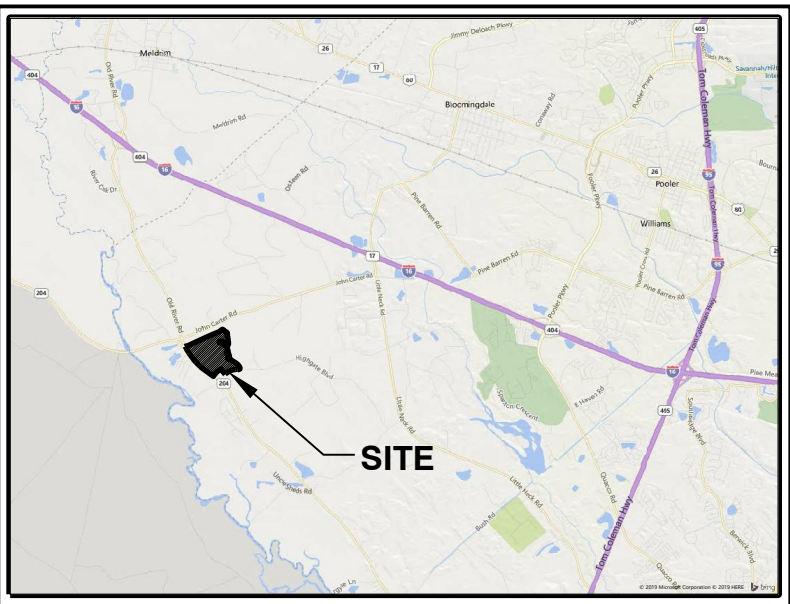
PREPARED FOR:
FORESTAR (USA) REAL ESTATE GROUP INC.

LEGEND:

- Single Family Lots
- Existing Wetland
- Townhome Lots
- Open Space
- Amenity
- Lagoons
- PHASE LINE

PHASING:

PHASE	LOT COUNT	
PHASE 1	61	SINGLE-FAMILY
PHASE 2	48	SINGLE-FAMILY
PHASE 3	41	SINGLE-FAMILY
PHASE 4	52	TOWNHOMES
PHASE 5A	24	SINGLE-FAMILY
	12	TOWNHOMES
PHASE 5B	107	SINGLE-FAMILY
PHASE 6	119	TOWNHOMES
PHASE 7	100	SINGLE-FAMILY
SUBTOTAL:	381	SINGLE-FAMILY
	183	TOWNHOMES
TOTAL:	564	HOMES



VICINITY MAP



50 Park of Commerce Way
Savannah, GA 31405 • 912.234.5300
www.thomasandhutton.com

This map illustrates a general plan of the development which is for discussion purposes only, does not limit or bind the owner/developer, and is subject to change and revision without prior written notice to the holder. Dimensions, boundaries and position locations are for illustrative purposes only and are subject to an accurate survey and property description.

COPYRIGHT © 2025 THOMAS & HUTTON








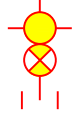
WATER MASTER PLAN

THE PINES

SAVANNAH, GEORGIA
March 28, 2019
LAST REVISED: 03/04/2025

PREPARED FOR:
FORESTAR (USA) REAL ESTATE GROUP INC.

LEGEND:

- 12" WATER MAIN 
- 10" WATER MAIN 
- 8" WATER MAIN 
- 6" WATER MAIN 
- 4" WATER MAIN 
- FIRE HYDRANT 



VICINITY MAP



50 Park of Commerce Way
Savannah, GA 31405 • 912.234.5300
www.thomasandhutton.com

This map illustrates a general plan of the development which is for discussion purposes only, does not limit or bind the owner/developer, and is subject to change and revision without prior written notice to the holder. Dimensions, boundaries and position locations are for illustrative purposes only and are subject to an accurate survey and property description.


COPYRIGHT © 2025 THOMAS & HUTTON

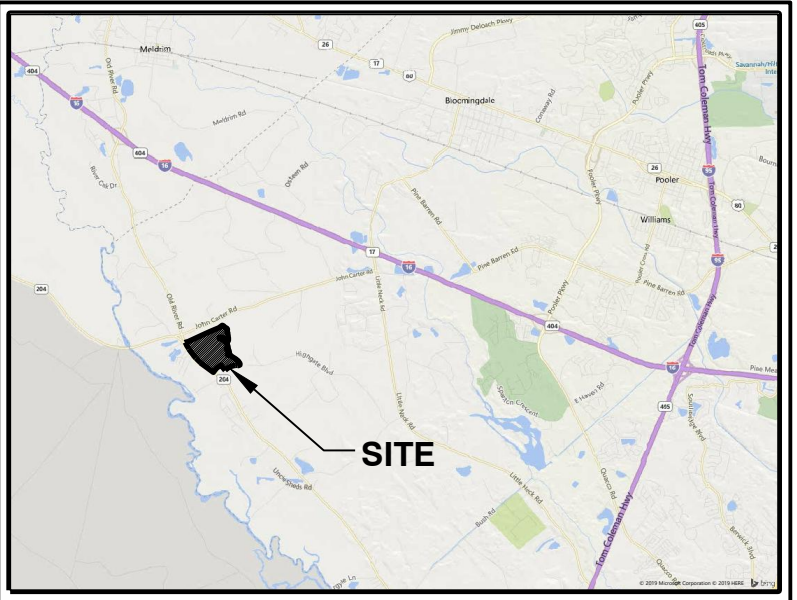
SEWER MASTER
PLAN
THE PINES

SAVANNAH, GEORGIA
March 28, 2019
LAST REVISED: 03/04/2025

PREPARED FOR:
FORESTAR (USA) REAL ESTATE GROUP INC.

LEGEND:

-  PUMP STATION
-  MANHOLE
-  SEWER LINE
-  FORCEMAIN



VICINITY MAP



50 Park of Commerce Way
Savannah, GA 31405 • 912.234.5300

www.thomasandhutton.com

This map illustrates a general plan of the development which is for discussion purposes only, does not limit or bind the owner/developer, and is subject to change and revision without prior written notice to the holder. Dimensions, boundaries and position locations are for illustrative purposes only and are subject to an accurate survey and property description.

COPYRIGHT © 2025 THOMAS & HUTTON

DRAINAGE MASTER PLAN THE PINES

SAVANNAH, GEORGIA
March 28, 2019
LAST REVISED: 03/04/2025

PREPARED FOR:
FORESTAR (USA) REAL ESTATE GROUP INC.

LEGEND:

- PROPOSED LAGOON
- DRAINAGE PIPE
- FLOW DIRECTION
- WETLAND
- BUBBLER
- CONTROL STRUCTURE



VICINITY MAP



50 Park of Commerce Way
Savannah, GA 31405 • 912.234.5300

www.thomasandhutton.com

This map illustrates a general plan of the development which is for discussion purposes only, does not limit or bind the owner/developer, and is subject to change and revision without prior written notice to the holder. Dimensions, boundaries and position locations are for illustrative purposes only and are subject to an accurate survey and property description.

COPYRIGHT © 2025 THOMAS & HUTTON