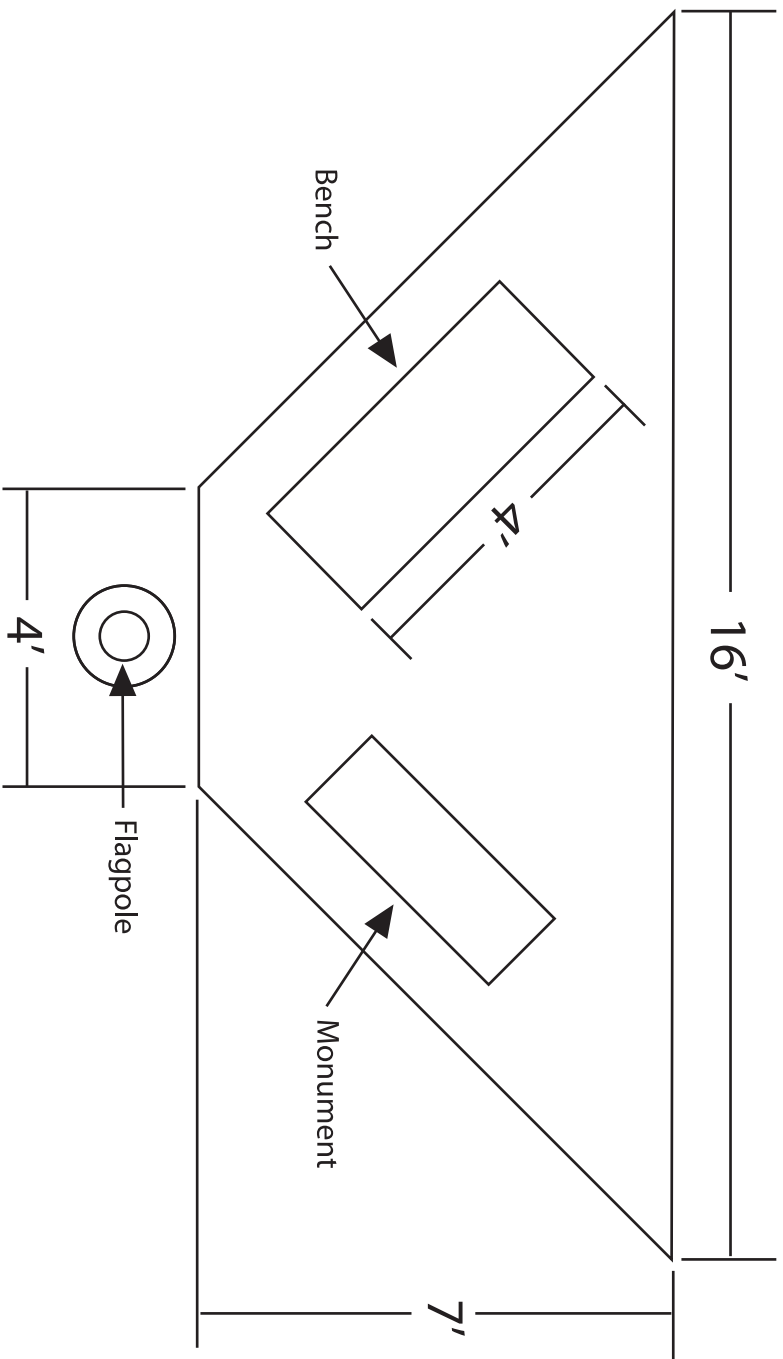
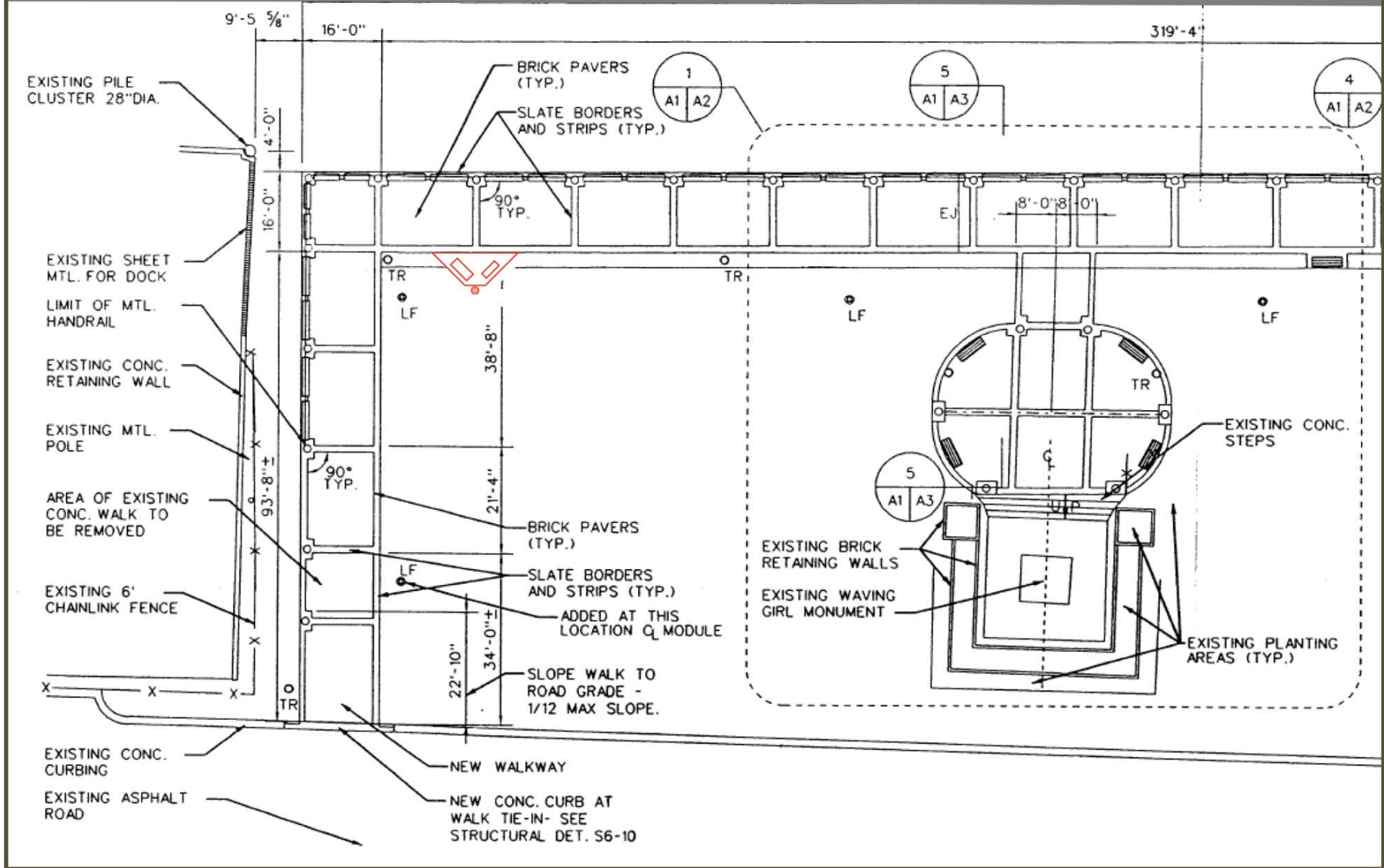


# Supplement To Monument Relocation Project Description Dated Oct. 9th, 2020

• Submitted December 30, 2020 •









PROPOSED  
MARKER  
LOCATION

SAVANNAH RIVER

WAVING GIRL  
MONUMENT

MORELL  
PARK

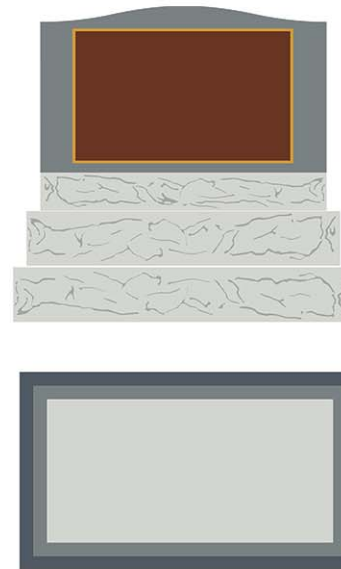
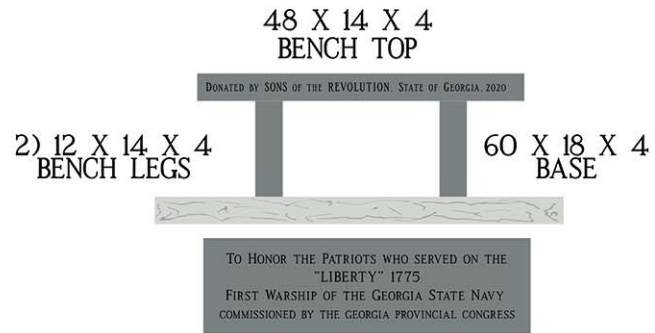
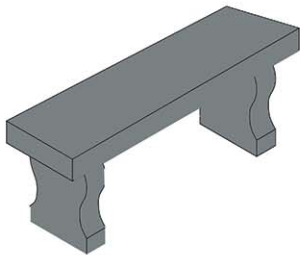
CURRENT  
MARKER LOCATION

RIVER STREET

FACTORS WALK

BROAD STREET





SLANT  
42" X 19" X 30"

SUB BASE  
46" X 25" X 8"

BASE  
50" X 29" X 8"