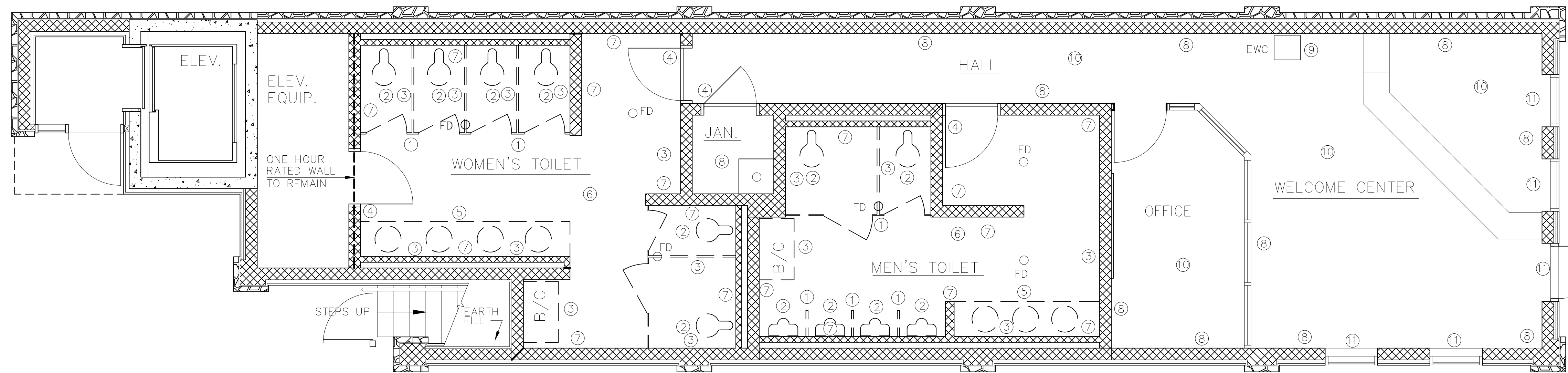


DEMOLITION NOTES:

- ① REMOVE ALL TOILET, URINAL PARTITIONS AND ASSOCIATED HARDWARE IN MENS AND LADIES ROOMS
- ② REMOVE ALL PLUMBING FIXTURES IN MENS AND LADIES RESTROOMS
- ③ REMOVE ALL TOILET ROOM ACCESSORIES
- ④ REMOVE DOOR HINGES FROM ALL METAL DOORS; PREPARE DOORS TO BE PAINTED AND RECEIVE NEW HINGES; MAINTAIN EXISTING LOCKING DEVICES
- ⑤ REMOVE SINKS, COUNTERTOPS; MAINTAIN EXISTING STEEL SUPPORT ANGLES FOR FUTURE USE; CAP LINES DURING REHAB AND PREPARE AREA FOR NEW COUNTERS AND SINKS; LOCATION OF SINKS AND ACCESSORIES TO REMAIN THE SAME; SEE ENLARGED PLAN
- ⑥ REMOVE TILE FLOORING DOWN TO SUBSTRATE; PREPARE AREA TO RECEIVE NEW STAINED EPOXY FILL. MAINTAIN EXISTING SLOPE TO FLOOR DRAINS; CAP DRAINS DURING DEMOLITION
- ⑦ REMOVE EXISTING WALL TILE DOWN TO SUBSTRATE; PREPARE AREA FOR NEW TILE
- ⑧ ASSESS CONDITION OF STUCCO WALLS IN WELCOME CENTER & OFFICE; MAKE NECESSARY REPAIRS AND PREPARE AREA FOR NEW PAINT
- ⑨ REMOVE EXISTING WATER COOLER; CAP LINE AND PREPARE AREA FOR NEW EWC
- ⑩ CLEAN EXISTING TILE FLOOR THOROUGHLY
- ⑪ CLEAN AND VERIFY CONDITION OF ALL STOREFRONT WINDOWS AND DOOR SYSTEMS

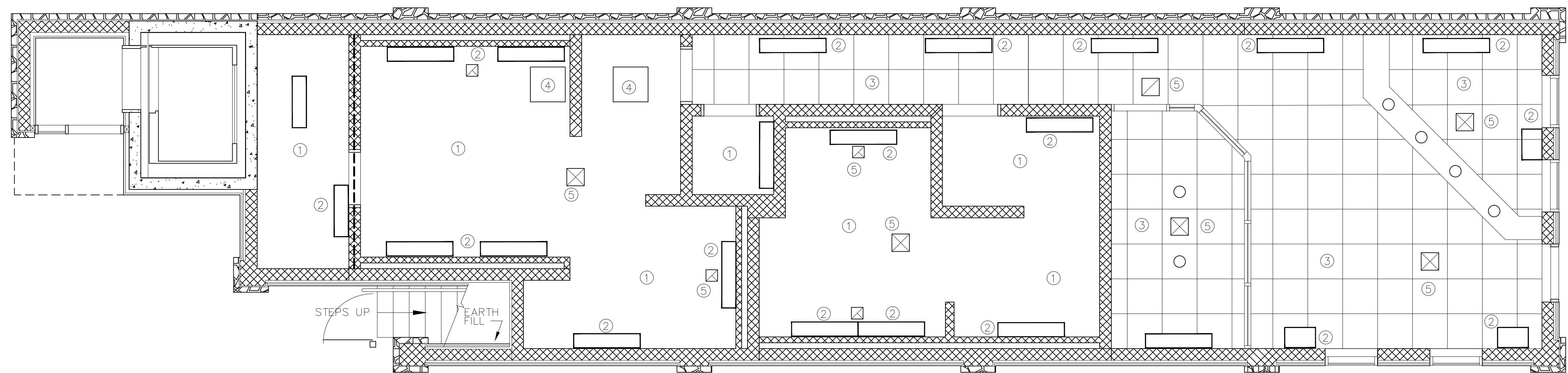


DEMO FLOOR PLAN

SCALE : 1/4" = 1'-0"

RCP DEMOLITION NOTES:

- ① ASSESS CONDITION OF GYP. BD. CEILING; PREPARE AREAS IN NEED OF REPAIRS
- ② REMOVE EXISTING TROUGH LIGHT FIXTURES; CAP LINES AND PREPARE AREAS FOR NEW FIXTURES
- ③ REMOVE ACPS IN WELCOME CENTER AND HALL; PREPARE AREA TO RECEIVE NEW ACPS SYSTEM
- ④ REMOVE EXISTING ACCESS PANELS; CLEAN AND PREPARE FOR PAINT
- ⑤ REMOVE EXISTING DIFUSERS AND RETURN AIR GRILLS; PREPARE FOR INSTALLATION OF NEW ONES



RCP DEMO PLAN

SCALE : 1/4" = 1'-0"

LIST OF ABBREVIATIONS

AB.	ABOVE	EXP.	EXPOSED OR EXPANSION	ORNA.	ORNAMENTAL
ALUM.	ALUMINUM	FD	FLOOR DRAIN	PLYWD.	PLYWOOD
AGG.	AGGREGATE	FF	FINISH FLOOR	PL	PLATE
A.F.F.	ABOVE FINISH FLOOR	FIN.	FINISH	RAD.	RADIUS
BD.	BOARD	GYP.	GYPSUM	RND.	ROUND
BLK.	BLOCK	HDW.	HARDWARE	REINF.	REINFORCING
BRKTS.	BRACKETS	HT.	HEIGHT	RET.	RETAINING
COLS.	COLUMNS	H.	HIGH	STRUCT.	STRUCTURAL
CONT.	CONTINUOUS	HORIZ.	HORIZONTAL	SHT.	SHEET
CTS.	COATS	HR.	HOUR	SUSP.	SUSPENDED
CL.	CENTERLINE	ID.	INSIDE DIAMETER	SQ.	SQUARE
CONC.	CONCRETE	JT.	JOINT	STL.	STEEL
CMU	CONCRETE MASONRY UNIT	MIN.	MINIMUM	SIM.	SIMILAR
CLG.	CEILING	MFG.	MANUFACTURED	ST.	STAINLESS
DWG.	DRAWING	MIDPT.	MIDPOINT	TK.	THICK
DIA.	DIAMETER	MECH.	MECHANICAL	TYP.	TYPICAL
DN.	DOWN	N/A	NOT APPLICABLE	VERT.	VERTICAL
EQ.	EQUAL	NIC	NOT IN CONTRACT	W.	WIDTH
ELEV.	ELEVATOR OR ELEVATION	OC	ON CENTER	W.	WIDE
EQUIP.	EQUIPMENT	O'HANG.	OVERHANG	EA	EACH
EXT.	EXTERIOR	OD	OUTSIDE DIAMETER	E.T.R.	EXISTING TO REMAIN

ARCHITECTURAL LEGEND

- FLOOR DRAIN
- FD
- ▨ REGULAR CMU IN PLAN
- ▧ ACPS CEILING
- LIGHT FIXTURE
- ⊗ CEILING DIFUSER
- LIGHT FIXTURE

Notes:

USE OF THESE FILES AND DRAWINGS CONSTITUTES RECIPIENT'S AGREEMENT TO THE FOLLOWING:

THIS MEDIA IS RESTRICTED TO THE ORIGINAL SITE FOR WHICH IT WAS PREPARED. MATERIAL SHALL NOT BE TRANSFERRED TO ANY OTHER PARTY FOR USE IN OTHER PROJECTS. REUSE OR REPRODUCTION OF THE DOCUMENTS (WHOLE OR IN PART) FOR ANY OTHER PURPOSE THAN THAT FOR WHICH IT WAS INTENDED IS STRICTLY PROHIBITED.

Dwg. by	INT
Ckd. by	INT
Date	08/13/2018

Project Number:

PB-425

Sheet Number:

D-1

Architectural