

An aerial photograph of a suburban neighborhood in Savannah, Georgia. The image shows a mix of residential housing, including large multi-unit apartment complexes with light-colored siding and dark roofs, and smaller single-family homes. There are several green spaces, including a large rectangular field in the upper center and various smaller lawns and parks. The streets are paved and have some parked cars. The overall scene is a typical suburban development with a mix of housing types and greenery.

Neighborhood Livability

Assessing the Quality of Life in Savannah neighborhoods

City Council Work Session - October 8, 2020



City of Savannah

Mission Statement

Key Words

- Exceptional public services
- Residents, businesses and guests
- Safe, healthy and thriving

To provide exceptional public services to residents, businesses and guests, so they may experience a safe, healthy and thriving community.

Fulfilling Our Mission:

How do we know we're on the road to success?

- Strategic Plan Implementation
- Effective Fiscal Planning & Management
- Community Input & Customer Feedback
- Internal Feedback – All Levels of the Organization
- **Tracking Conditions & Measuring Improvement Over Time**

Resilience *vibrancy* *Quality of Life* Livability **Vitality**

Resilient Resilience

The capacity to withstand, adapt and recover from adversity, stress, misfortune or change

Synonyms

Durable, strong, buoyant, pliable, tough, sturdy, flexibility

Vibrant Vibrancy

The degree to which an object or place pulsates with life, energy, vigor or activity

Synonyms

Alive, bustling, busy, flourishing, happening, lively, thriving

Quality of Life

The degree to which a person or place is healthy, safe, comfortable and able to provide for the enjoyment of daily living

Synonyms

General wellbeing, happiness, health, welfare, comfort, standard of living

Livable Livability

The degree to which a place is suitable or good for human living; fit to live in or inhabit

Synonyms

Fit to live in or occupy, habitable, in good repair, suitable for use, tenantable

Vital Vitality

The state of being strong and active; the energy and power to endure; capacity to live and develop

Synonyms

Exuberance, liveliness, robustness, vibrance, vibrancy, vigorousness

How do we measure neighborhood livability/quality of life?



It depends on who you ask. It means something different to different people.

“Access to quality housing, transportation, jobs, education.”

“Access to basic services, such as food, shelter, health services, and safety.”

“Access to shopping and entertainment, convenient parking and other amenities.”

Livability Ratings



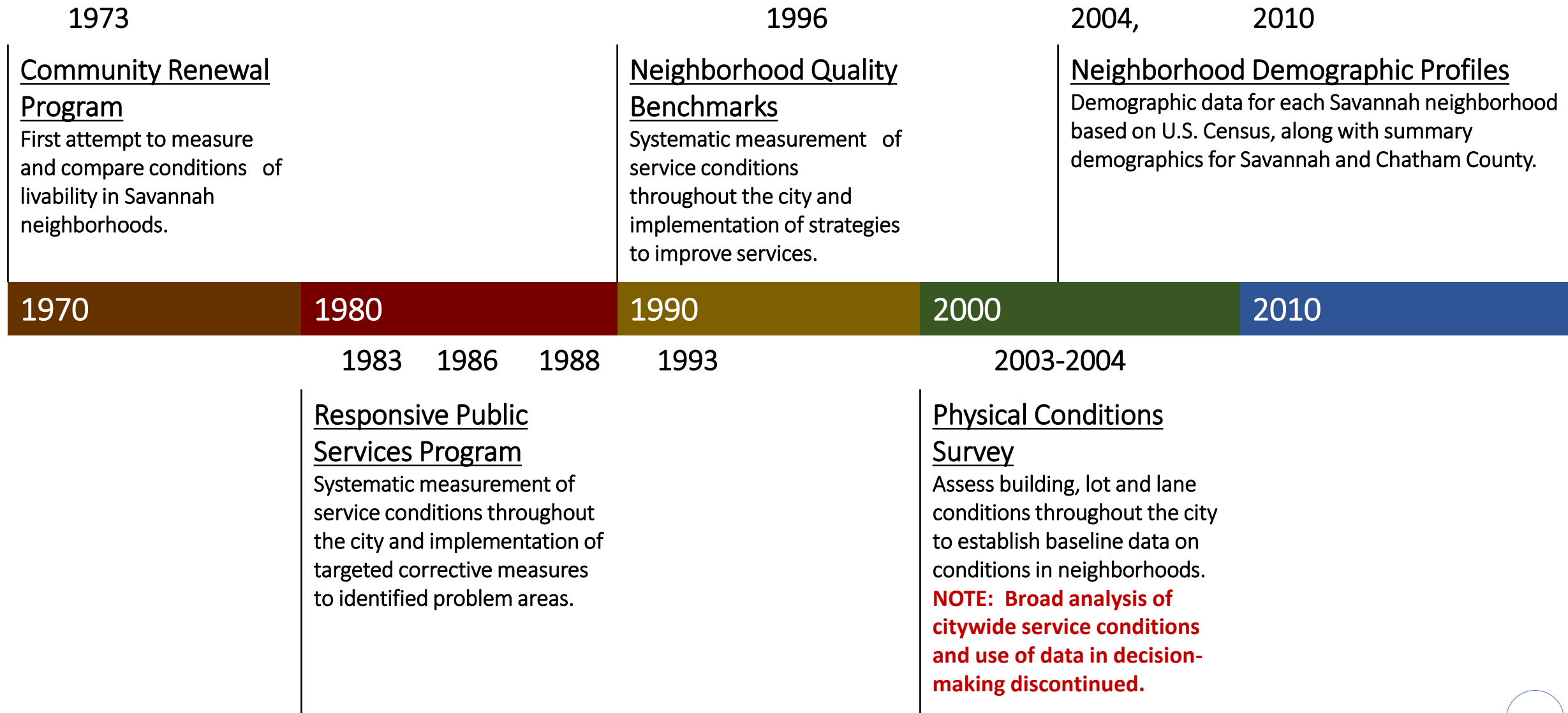


City of Savannah

Assessing Neighborhoods:
Our History



History: Measuring Conditions



History: What we measured

Housing

building conditions,
vacant structures/lots

Cleanliness

streets, lanes, lots,
litter, illegal dumpsites

Recreation/Leisure

recreation facilities,
equipment, landscape

Property Maintenance

lot conditions, wooded
lots, vacant lots

Demographics

Population

Age

Race, Ethnicity

Household Type,
Number

Housing Units

Poverty

Household
Income

Education

Unemployment

Fire Services

fires, response time,
education & awareness

Park and Tree

maintenance, repair,
safety components

Police Services

person/property
crimes, response time

Traffic & Transportation

traffic volume, travel
speed, construction

Streets/Sidewalks

paved/unpaved,
hazards/repair, lighting,
appearance, cleanliness

Sewer System

unserved areas, sewer
line conditions, lift
station conditions

Water System

Distribution system,
fire protection, leaks

Storm Water System

Flooding streets/
ditches, response time,
maintenance

What worked, what didn't

What we did well:

- Measured conditions citywide
- Focused on conditions related to municipal services
- Performed periodic updates over time
- Used data to identify service area deficiencies/gaps
- Used data to inform major decisions: budget/resource allocation, citywide priorities
- Required bureaus/departments to address service area deficiencies as part of annual goals and annual work program

What worked, what didn't

What we didn't do so well:

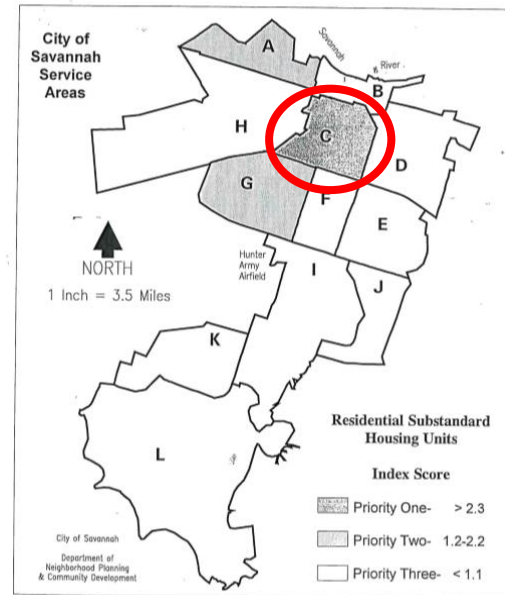
- Did not maintain consistency in types of conditions measured, or study frequency
- Did not analyze data comparatively over time
- Did not evaluate effectiveness of strategies, corrective measures
- Bureaus/departments allowed to “opt out”, in subsequent years, weakening the study's utility
- Stopped using citywide data to inform decision-making
- Cautionary Tale: “Area C”

Area C

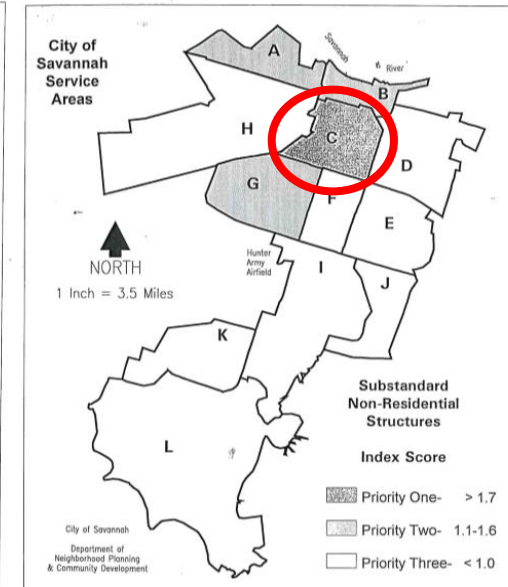
Population: 22,415

Neighborhoods: 12

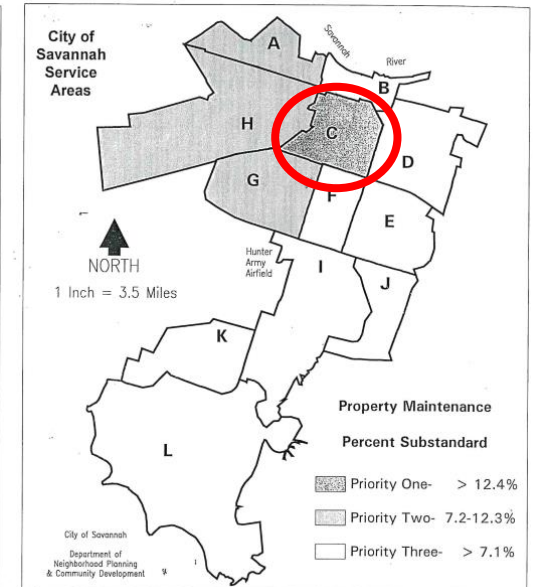
- Kayton-Frazier
- South Historic District
- Beach Institute
- Eastside
- Dixon Park
- East Victorian
- West Victorian
- Cuyler/Brownville
- Metropolitan
- Thomas Square
- Midtown
- Baldwin Park



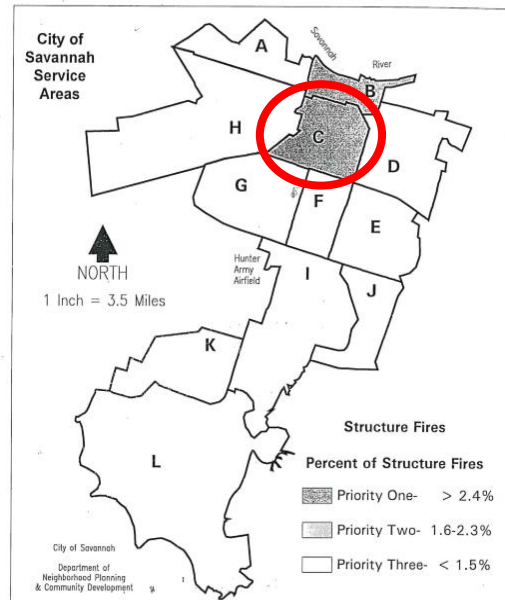
Substandard Residential Units



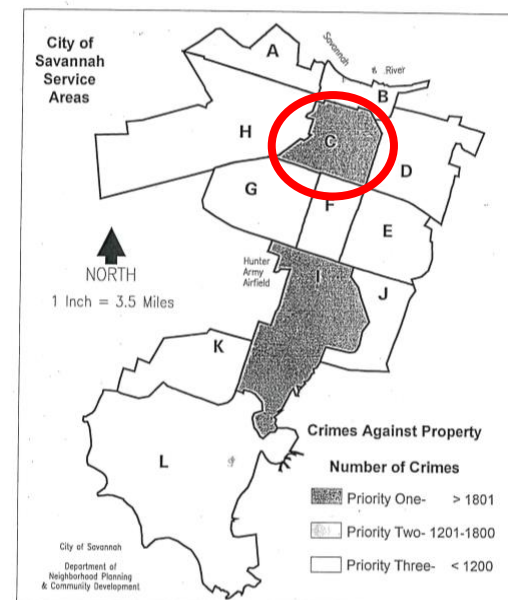
Substandard Non-Residential



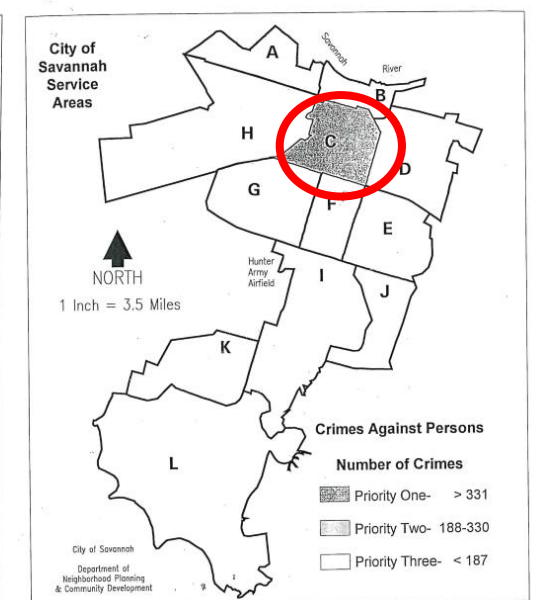
Property Maintenance



Percent of Structural Fires



Crimes Against Persons

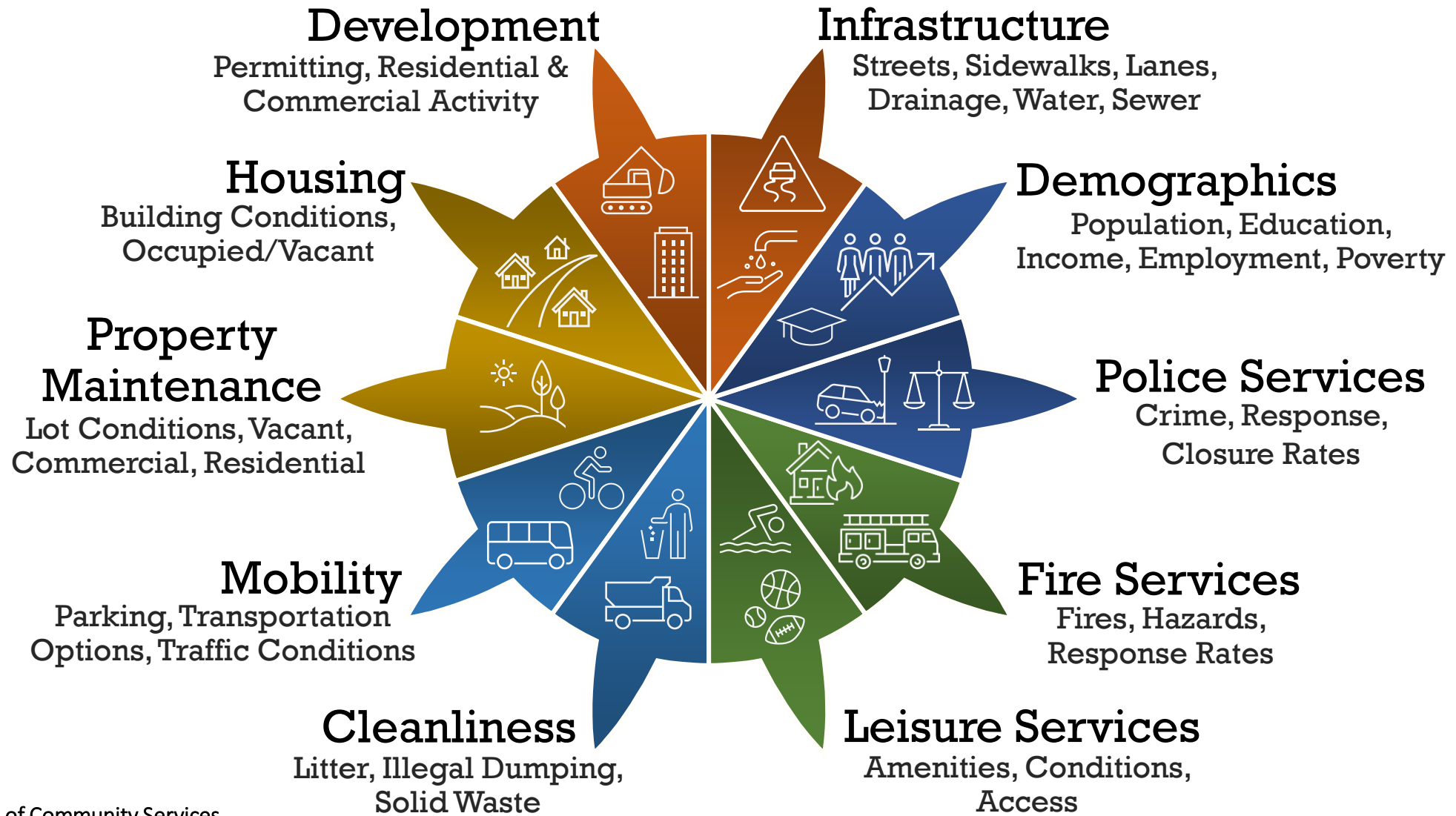


Crimes Against Property

Recommendations for Upcoming Assessment

- Assess conditions related to **core municipal services**
- Include **demographic data** to better understand population needs
- **Avoid duplication**, where data already exists
- Plan to **perform assessment periodically**, every few years
- Establish **minimum service level standards** for all Savannah neighborhoods
- Compare **neighborhoods to the standard**, not to:
 - other neighborhoods or a “magic number” that suggests “best”, “worst”, “livable”
- Use data to **make informed decisions**, focus resources, plan interventions

Proposed Neighborhood Conditions



Resource Needs

- ✓ People (Field Survey Team)
- ✓ Survey Instrument (Software/Hardware)
- ✓ Funding (approx. \$20-25K)

Note: Project Timeline depends on availability of personnel/resources.

Thank You !