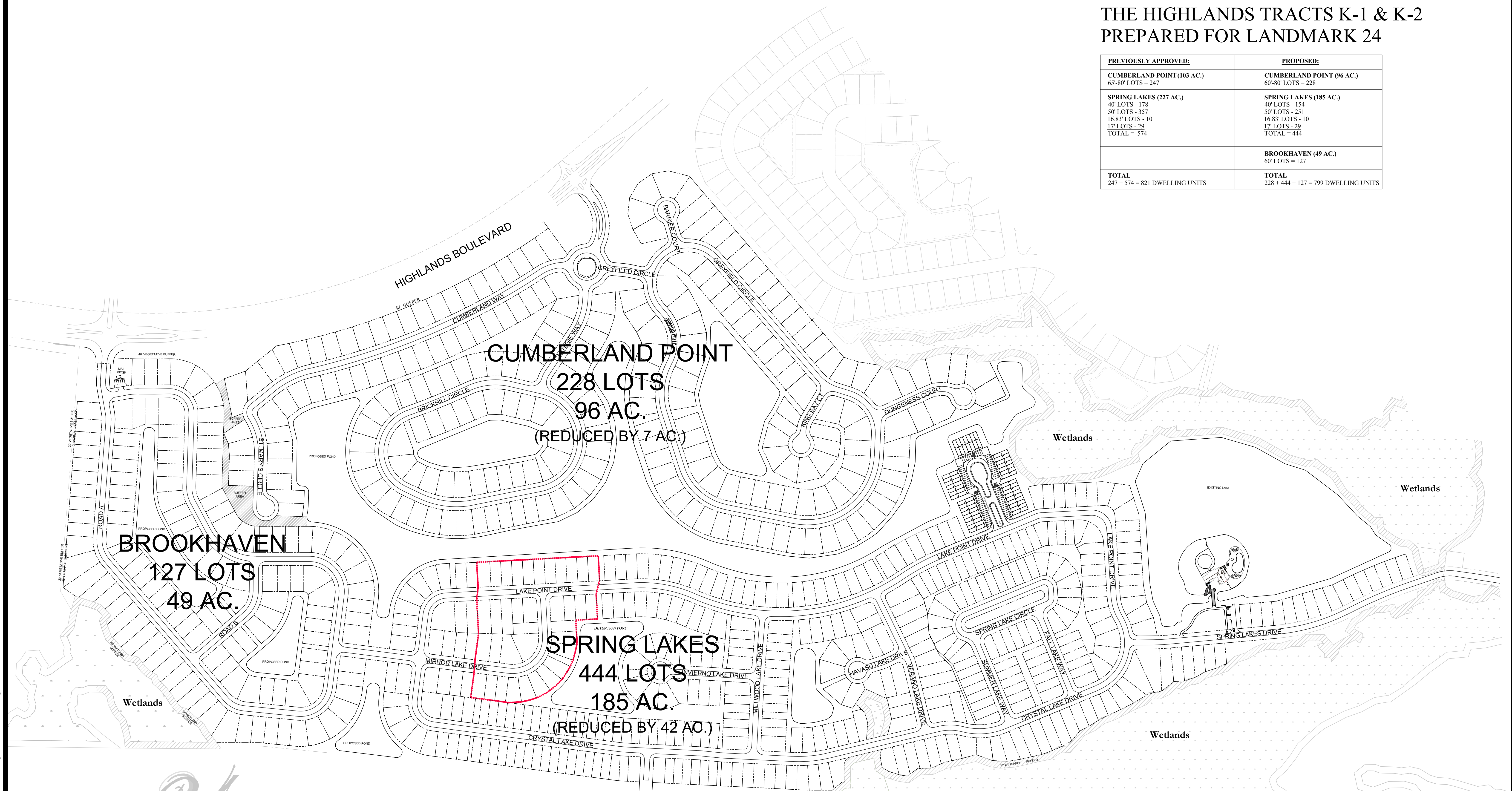


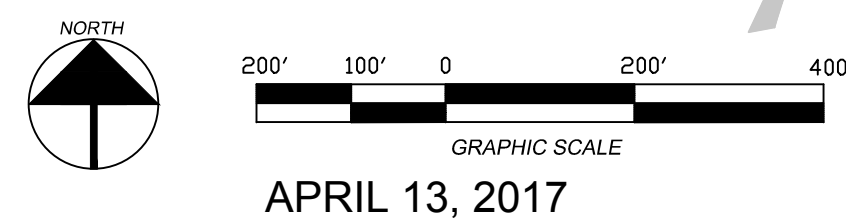
PROPOSED MASTER PLAN REVISION

THE HIGHLANDS TRACTS K-1 & K-2
PREPARED FOR LANDMARK 24

PREVIOUSLY APPROVED:	PROPOSED:
CUMBERLAND POINT (103 AC.) 65'-80' LOTS = 247	CUMBERLAND POINT (96 AC.) 60'-80' LOTS = 228
SPRING LAKES (227 AC.) 40' LOTS - 178 50' LOTS - 357 16.83' LOTS - 10 17' LOTS - 29 TOTAL = 574	SPRING LAKES (185 AC.) 40' LOTS - 154 50' LOTS - 251 16.83' LOTS - 10 17' LOTS - 29 TOTAL = 444
	BROOKHAVEN (49 AC.) 60' LOTS = 127
TOTAL 247 + 574 = 821 DWELLING UNITS	TOTAL 228 + 444 + 127 = 799 DWELLING UNITS



a **LANDMARK** master planned community



NOTES:
1. Pricing, features, plans, specifications, options, dimensions, designs and details described or depicted are approximate and proposed only and are subject to change without notice or obligation. Photographs, drawings and renderings, including amenities, green space and common areas are conceptual and are for illustrative purposes only. Availability is not guaranteed. Oral representations cannot be relied upon as correctly stating representations of the developer or the builder.
2. This is not an offer to sell lots. Buyer must purchase a complete home with the lot. Other restrictions may apply.

ENGINEERS SURVEYORS
COLEMAN COMPANY, INC.
17 PARK OF COMMERCE | SUITE 201
SAVANNAH, GA 31405
(O) 912.200.3041 | (F) 912.200.3056