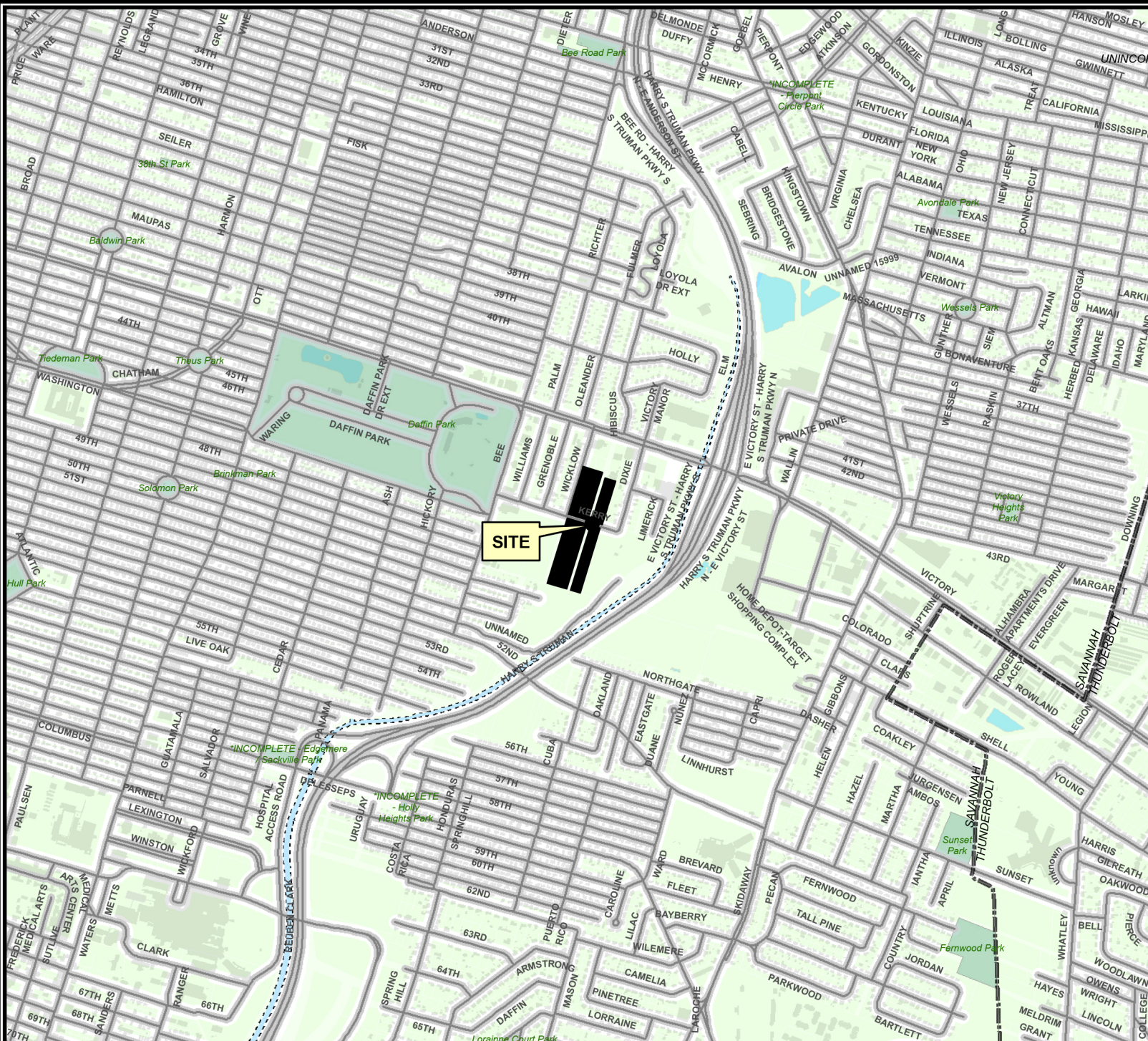


# VICINITY MAP

21-004883-ZA  
 Wicklow St/Kerry St. Area  
 Savannah, Ga  
 Aldermanic District: 3 - Wilder-Bryan  
 Commission District: 2 - Rivers  
 Neighborhood: See Map  
 Property / PIN(s): See Map



THIS MAP IS A COMPILATION OF INFORMATION FROM VARIOUS SOURCES AND SCALES. IN MOST CASES THE INFORMATION HAS NOT BEEN FIELD VERIFIED. USE THIS MAP FOR GENERAL PLANNING PURPOSES ONLY.



1 inch = 1,500 feet

D

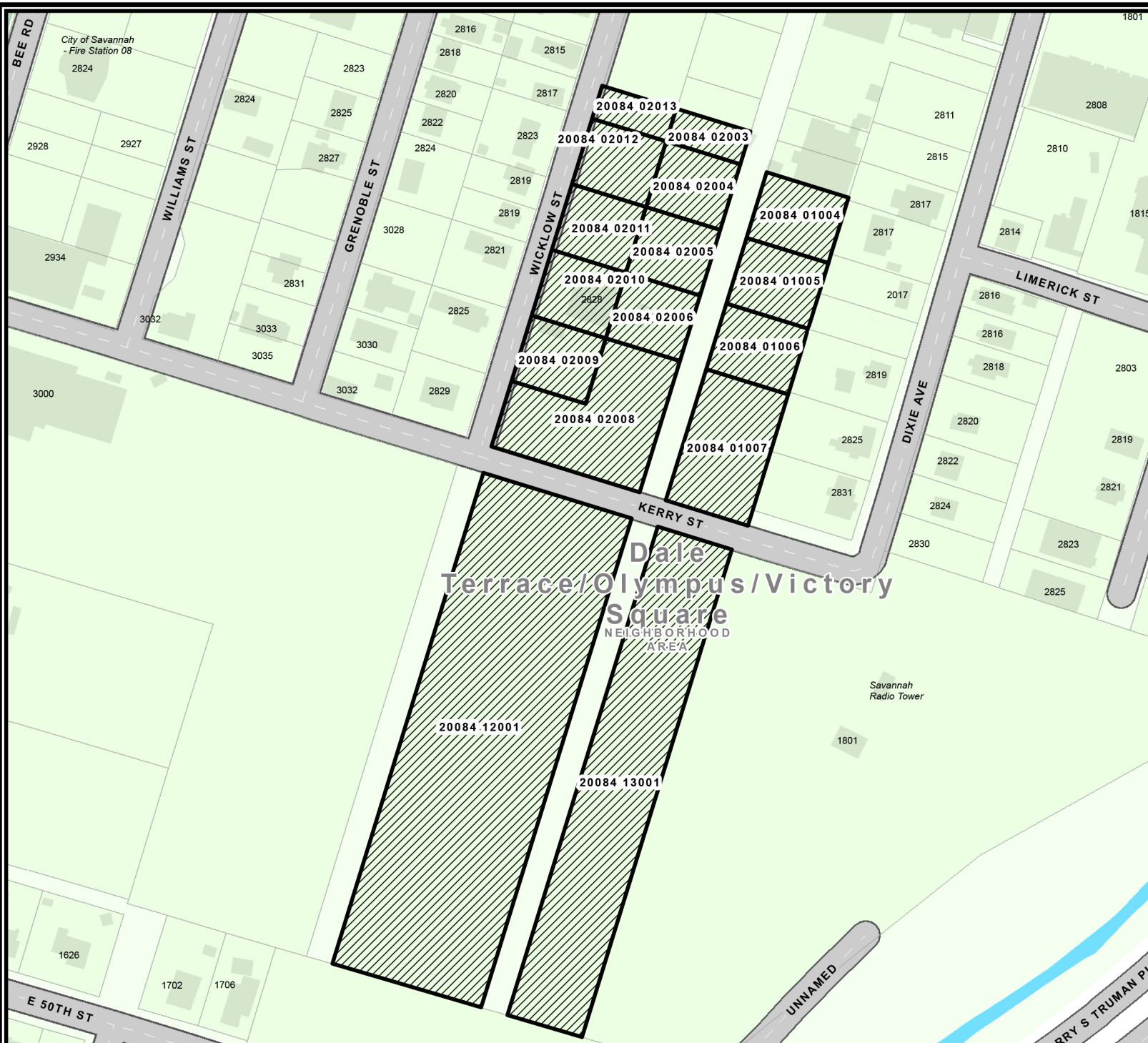


Date: 9/3/2021

CHATHAM COUNTY - SAVANNAH  
**METROPOLITAN PLANNING COMMISSION**  
 110 E. STATE ST. SAVANNAH, GA 31412-8246 PHONE 912-651-1440

# TAX MAP

21-004883-ZA  
 Wicklow St/Kerry St. Area  
 Savannah, Ga  
 Aldermanic District: 3 - Wilder-Bryan  
 Commission District: 2 - Rivers  
 Neighborhood: See Map  
 Property / PIN(s): See Map



THIS MAP IS A COMPILATION OF INFORMATION FROM VARIOUS SOURCES AND SCALES. IN MOST CASES THE INFORMATION HAS NOT BEEN FIELD VERIFIED. USE THIS MAP FOR GENERAL PLANNING PURPOSES ONLY.



1 inch = 200 feet

D



Date: 9/3/2021

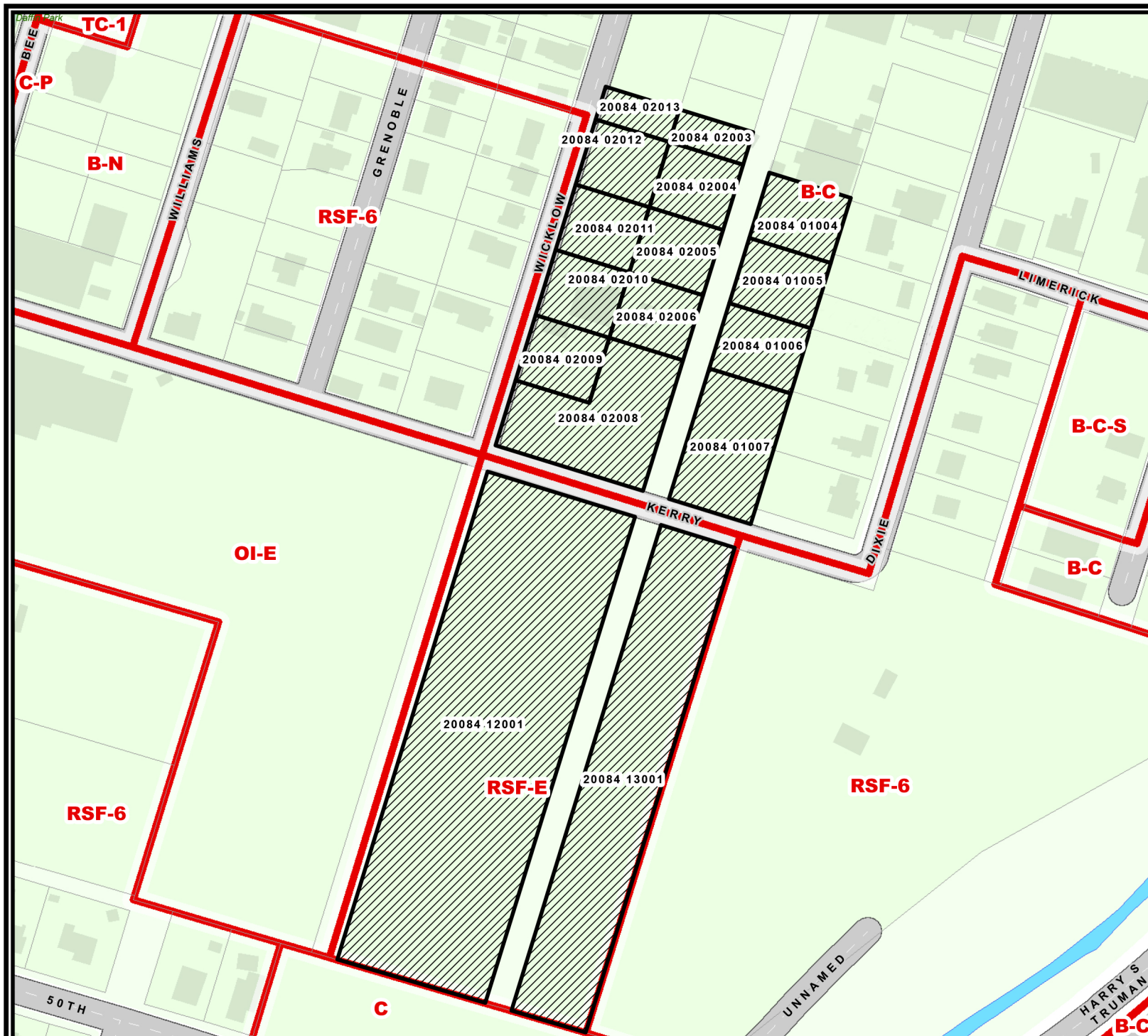
CHATHAM COUNTY - SAVANNAH  
**METROPOLITAN PLANNING COMMISSION**  
 110 E. STATE ST. SAVANNAH, GA 31412-8246 PHONE 912-651-1440

# ZONING MAP

21-004883-ZA  
 Wicklow St/Kerry St. Area  
 Savannah, Ga  
 Aldermanic District: 3 - Wilder-Bryan  
 Commission District: 2 - Rivers  
 Neighborhood: See Map  
 Property / PIN(s): See Map

Current property zoning(s) is primarily  
 B-C, RSF-E  
 Proposed property zoning:  
 RMF-3

City of Savannah NewZo Zoning When Applicable



ZONING

Date: 9/3/2021



CHATHAM COUNTY · SAVANNAH  
**METROPOLITAN PLANNING COMMISSION**  
 110 E. STATE ST. SAVANNAH, GA 31412-8246 PHONE 912-651-1440

THIS MAP IS A COMPILATION OF INFORMATION FROM VARIOUS SOURCES AND SCALES. IN MOST CASES THE INFORMATION HAS NOT BEEN FIELD VERIFIED. USE THIS MAP FOR GENERAL PLANNING PURPOSES ONLY.

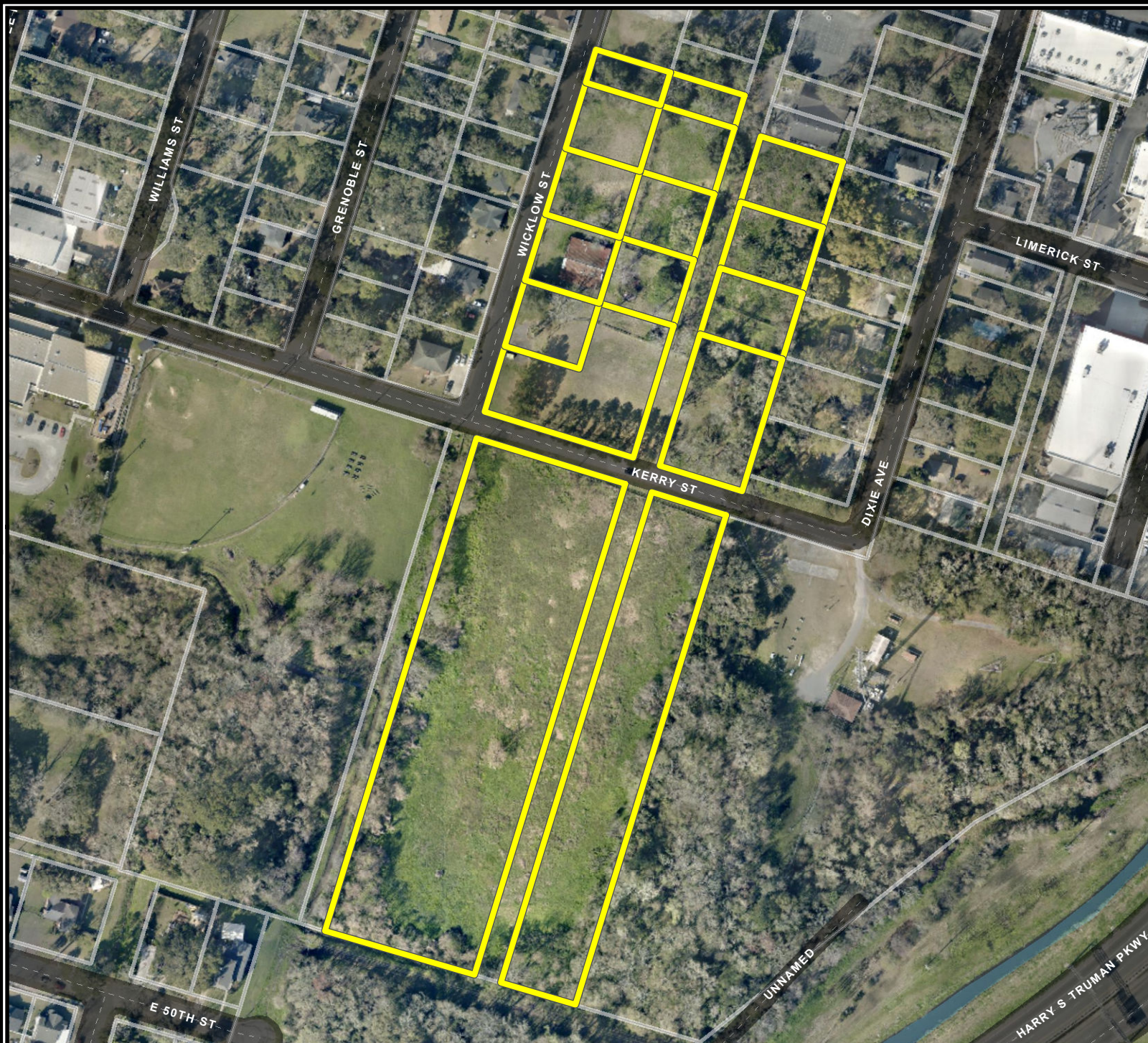


1 inch = 200 feet

D

# AERIAL MAP

21-004883-ZA  
Wicklow St/Kerry St. Area  
Savannah, Ga  
Aldermanic District: 3 - Wilder-Bryan  
Commission District: 2 - Rivers  
Neighborhood: See Map  
Property / PIN(s): See Map



THIS MAP IS A COMPILATION OF INFORMATION FROM VARIOUS SOURCES AND SCALES. IN MOST CASES THE INFORMATION HAS NOT BEEN FIELD VERIFIED. USE THIS MAP FOR GENERAL PLANNING PURPOSES ONLY.



1 inch = 200 feet

D

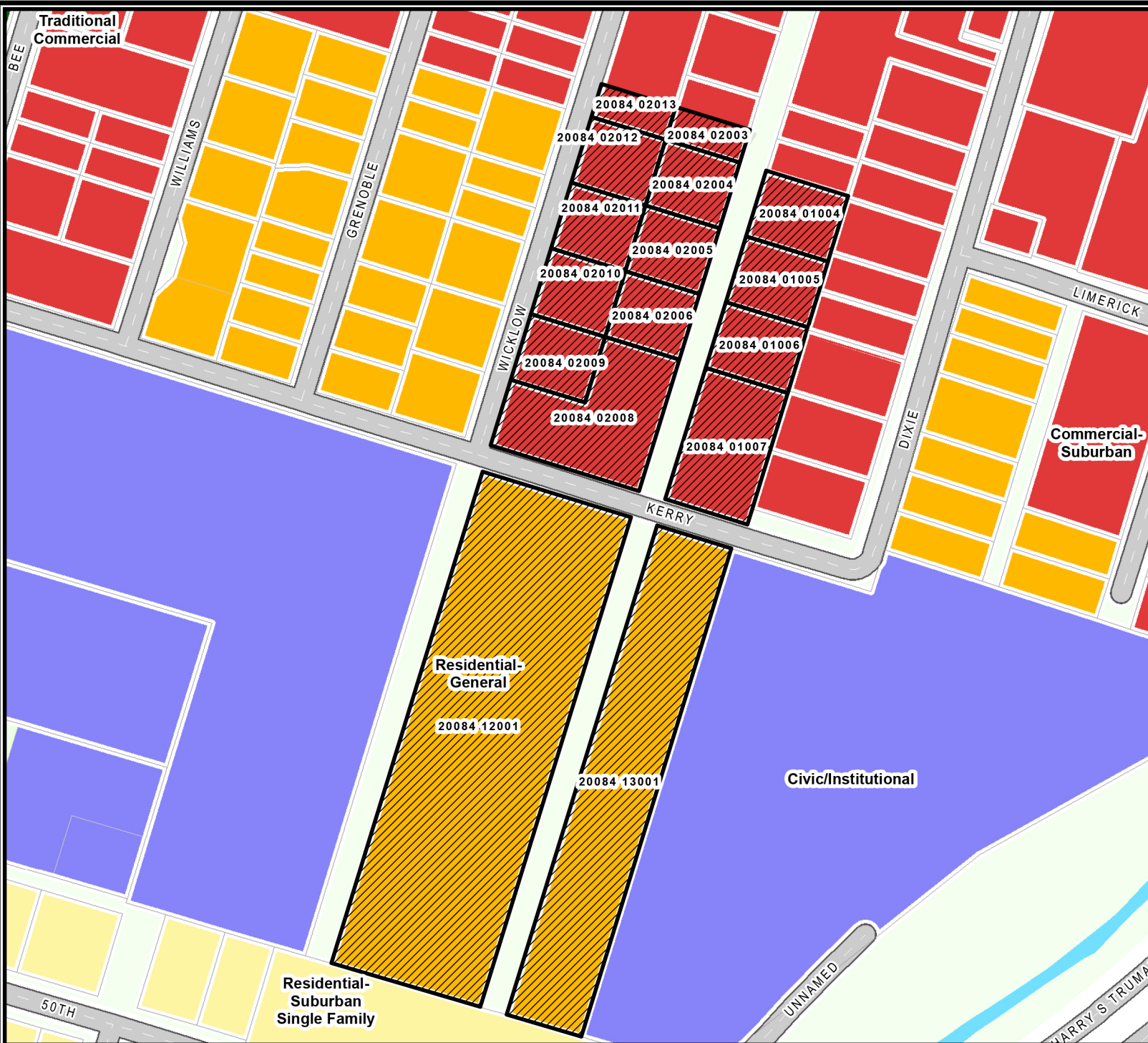


Date: 11/17/2021

CHATHAM COUNTY - SAVANNAH  
**METROPOLITAN PLANNING COMMISSION**  
110 E. STATE ST. SAVANNAH, GA 31412-8246 PHONE 912-651-1440

# FUTURE LAND USE

21-004883-ZA  
 Wicklow St/Kerry St. Area  
 Savannah, Ga  
 Aldermanic District: 3 - Wilder-Bryan  
 Commission District: 2 - Rivers  
 Neighborhood: See Map  
 Property / PIN(s): See Map



- Traditional Commercial
- Commercial- Suburban
- Residential- Suburban Single Family
- Residential- General
- Civic/Institutional
- Parks/Recreation

Date: 9/3/2021



CHATHAM COUNTY - SAVANNAH  
**METROPOLITAN PLANNING COMMISSION**  
 110 E. STATE ST. SAVANNAH, GA 31412-8246 PHONE 912-651-1440

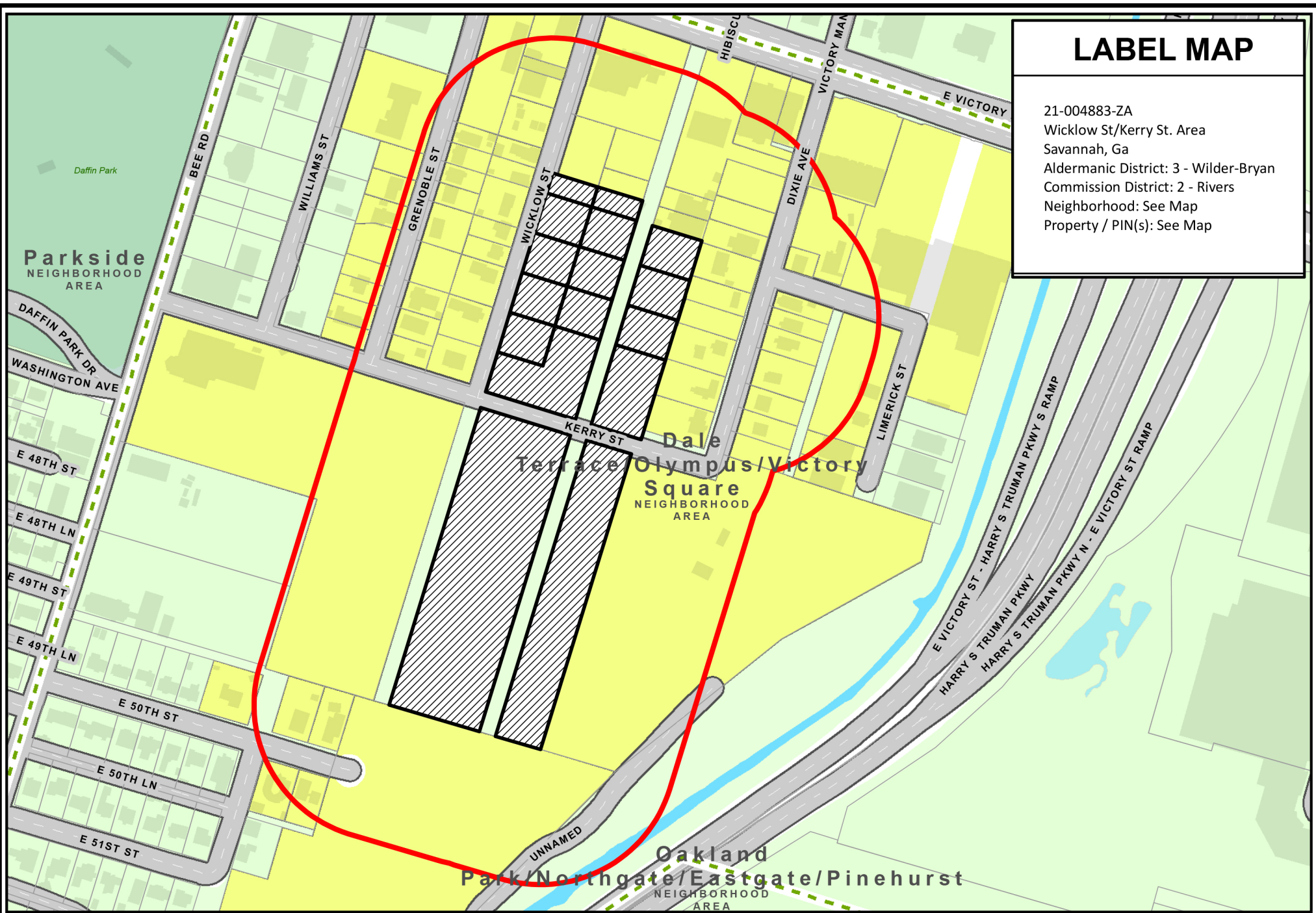
THIS MAP IS A COMPILATION OF INFORMATION FROM VARIOUS SOURCES AND SCALES. IN MOST CASES THE INFORMATION HAS NOT BEEN FIELD VERIFIED. USE THIS MAP FOR GENERAL PLANNING PURPOSES ONLY.



1 inch = 200 feet

# LABEL MAP

21-004883-ZA  
Wicklow St/Kerry St. Area  
Savannah, Ga  
Aldermanic District: 3 - Wilder-Bryan  
Commission District: 2 - Rivers  
Neighborhood: See Map  
Property / PIN(s): See Map



THIS MAP IS A COMPILATION OF INFORMATION FROM VARIOUS SOURCES AND SCALES. IN MOST CASES THE INFORMATION HAS NOT BEEN FIELD VERIFIED.  
**USE THIS MAP FOR GENERAL PLANNING PURPOSES ONLY.**



Date: 9/3/2021

1 inch = 300 feet



CHATHAM COUNTY - SAVANNAH  
**METROPOLITAN PLANNING COMMISSION**  
110 E. STATE ST. SAVANNAH, GA 31412-8246 PHONE 912-651-1440