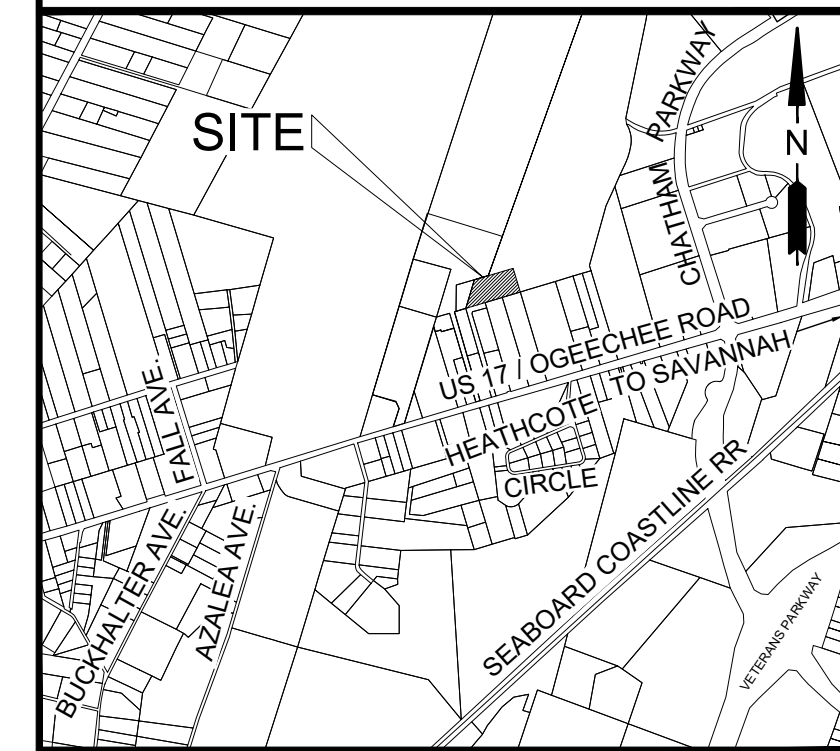


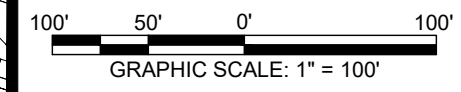
THIS BLOCK RESERVED FOR THE CLERK OF THE SUPERIOR COURT.

VICINITY MAP

NOT TO SCALE



NO.	BY	DATE
-	-	-
-	-	-
-	-	-



LINE	LENGTH	BEARING
L1	26.03'	N00°47'37"W
L2	31.12'	N00°40'32"W
L3	75.46'	S73°20'10"W
L4	58.80'	S73°11'31"W
L5	149.91'	S73°28'33"W
L6	30.07'	S16°24'40"E
L7	158.35'	S73°31'22"W
L8	47.11'	N13°26'32"E
L9	70.88'	N51°36'23"E
L10	70.88'	S51°36'23"W
L11	12.35'	S13°26'32"W

CURVE	LENGTH	RADIUS	DELTA	CHORD BRG	CHORD LENGTH
C1	243.12'	365.00'	38°09'51"	S32°31'28"W	238.65'
C2	88.06'	245.00'	20°35'35"	N41°18'35"E	87.58'
C3	169.28'	305.00'	31°47'58"	N35°42'24"E	167.11'
C4	203.16'	305.00'	38°09'51"	S32°31'28"W	199.42'

- NOTES:**
1. GEORGIA STATE COORDINATE SYSTEM - ZONE EAST, VERTICAL DATUM- NAVD 88.
 2. THE PROPERTY IS LOCATED IN ZONE X, NOT A SPECIAL FLOOD HAZARD AREA, AS DETERMINED BY FEMA COMMUNITY #13051C PANEL 0145F, DATED SEPT. 26, 2008.
 3. PARENT TRACT PIN NUMBER: 2-0873-01-008
 4. E.O.C. PLAT: 1/260,619
 5. E.O.C. FIELD: 1/51,818
 6. ADJUSTMENT METHOD: COMPASS RULE
 7. EQUIPMENT USED: TOPCON 303GTS
 8. FIELD SURVEY WAS COMPLETED ON: 11/20/13

EMC ENGINEERING SERVICES, INC.
 10 Chatham Center S, Suite 100
 Savannah, GA 31405
 Ph: (912) 232-6533
 Fax: (912) 233-4580
 savannah@emc-eng.com
 www.emc-eng.com

CIVIL MARINE ENVIRONMENTAL

ALBANY • ATLANTA • AUGUSTA • BRUNSWICK
 COLUMBUS • SAVANNAH • STATESBORO
 THOMASTON • VALDOSTA • WARNER ROBINS

EASEMENT PLAT


TRACT B OF THE HENDRIX MACHINERY COMPANY TRACT, 7TH G.M. DISTRICT SAVANNAH, CHATHAM COUNTY, GEORGIA

Prepared for:
MACALJON / SCL

PROJECT NO.:	20-0109
DRAWN BY:	CFM
DESIGNED BY:	-
SURVEYED BY:	EMC
SURVEY DATE:	11/20/2013
CHECKED BY:	-
SCALE:	1" = 100'
DATE:	OCTOBER 2020

SHEET
1
 OF 1

SURVEYORS CERTIFICATION



The property hereon lies completely within a jurisdiction which does not review or approve any plats or this type of plat prior to recording. RECORDATION OF THIS PLAT DOES NOT IMPLY APPROVAL OF ANY LOCAL JURISDICTION, AVAILABILITY OF PERMITS, COMPLIANCE WITH LOCAL REGULATIONS OR REQUIREMENTS, OR SUITABILITY FOR ANY USE OR PURPOSE OF THE LAND. Furthermore, the undersigned land surveyor certifies that this plat complies with the minimum technical standards for property surveys in Georgia as set forth in the rules and regulations of the Georgia Board of Registration for Professional Engineers and Land Surveyors and as set forth in O. C. G. A. Section 15-6-67.

GA REG. L. S. LIC. NO. 3343 _____ DATE _____

O:\2020\20-0109 MACALJON EASEMENT PLAT.DWG\20-0109V_S01.DWG 10/16/2020 11:47 AM