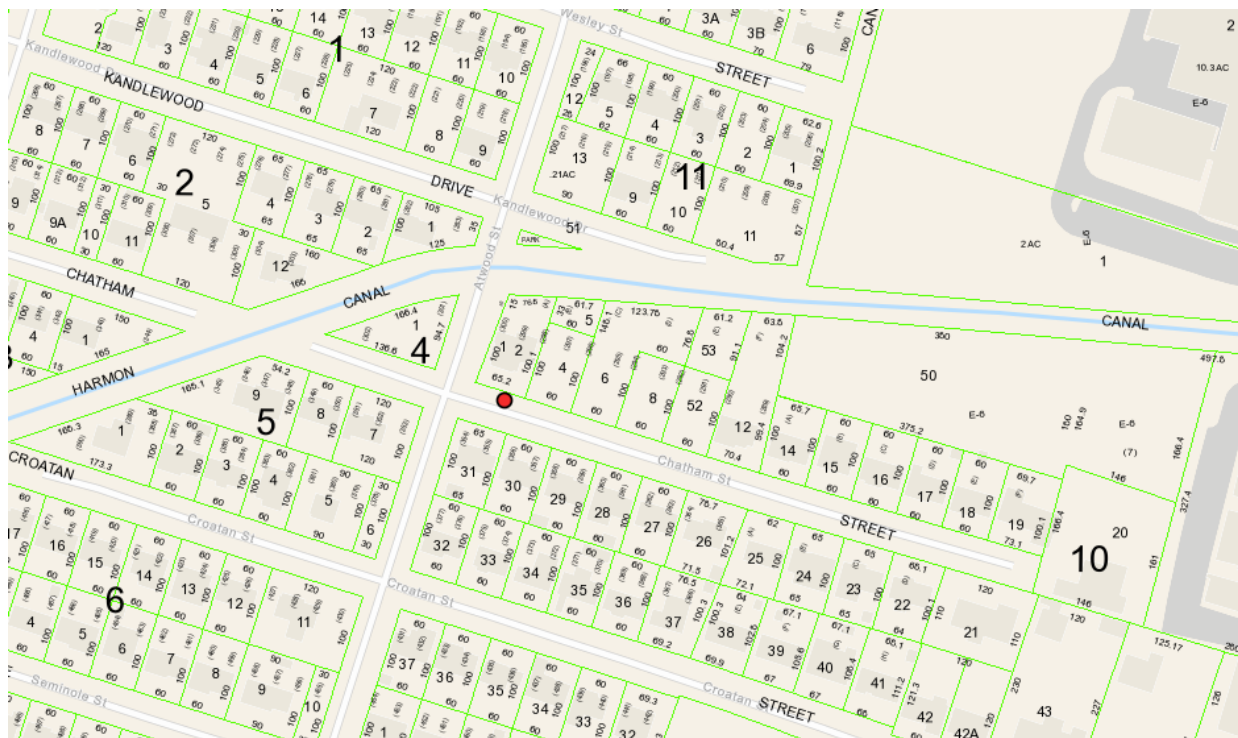
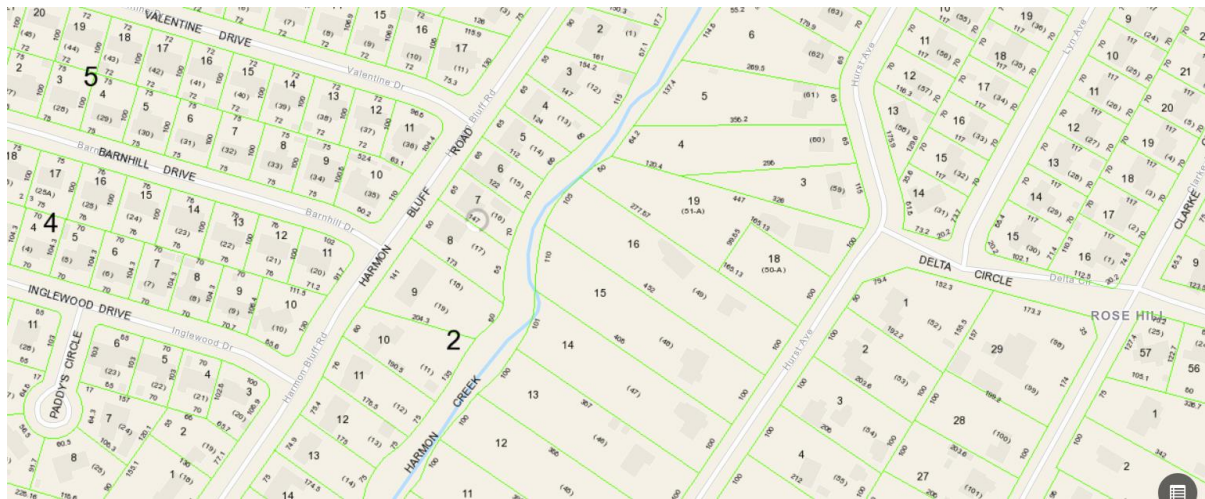
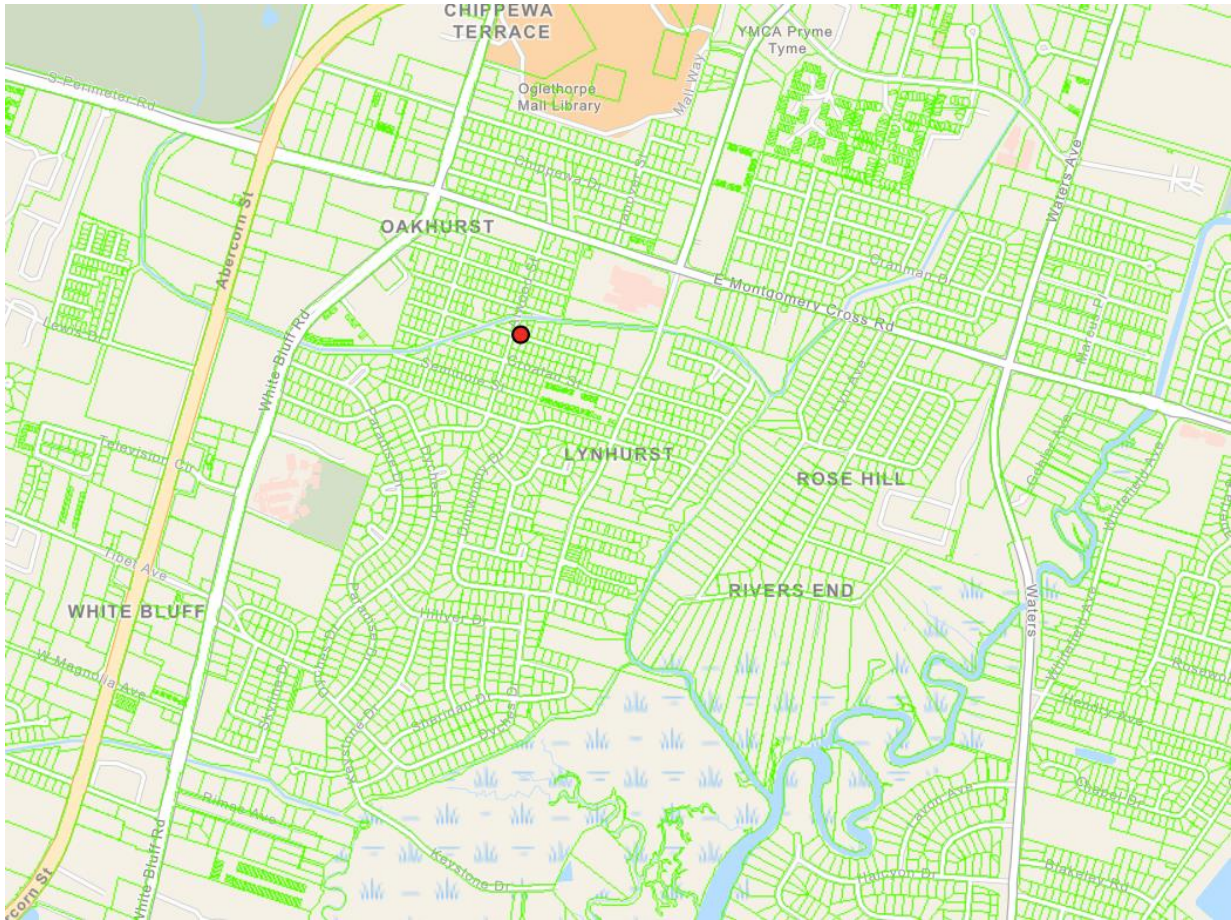


Proposed “Vernon Branch Park” Background

- The area was annexed into the Savannah City Limits in 1978 ([GA Law. page 3998](#)).
- The City of Savannah bought the lot (PT LTS 298 + 300 ALL LT 299 + R A OAKHURST SUB) on June 19, 2015 (sagis.org).
- The current sagis.org map of the area identifies the body of water cutting through the park as “Harmon Canal.” Harmon Canal connects to “Harmon Creek” which then connects to the “Vernon River” (sagis.org).





- A 1911 soil map housed in the Georgia Archives does not name the canal or creek, but shows how the waterways connect to the Vernon River
(<https://vault.georgiaarchives.org/digital/collection/cmfi/id/295/rec/3>).



- The 1888 Blandford Map, housed in the Chatham County Engineering Office, labels the waterway cutting through the park as “Harmon Canal.”

