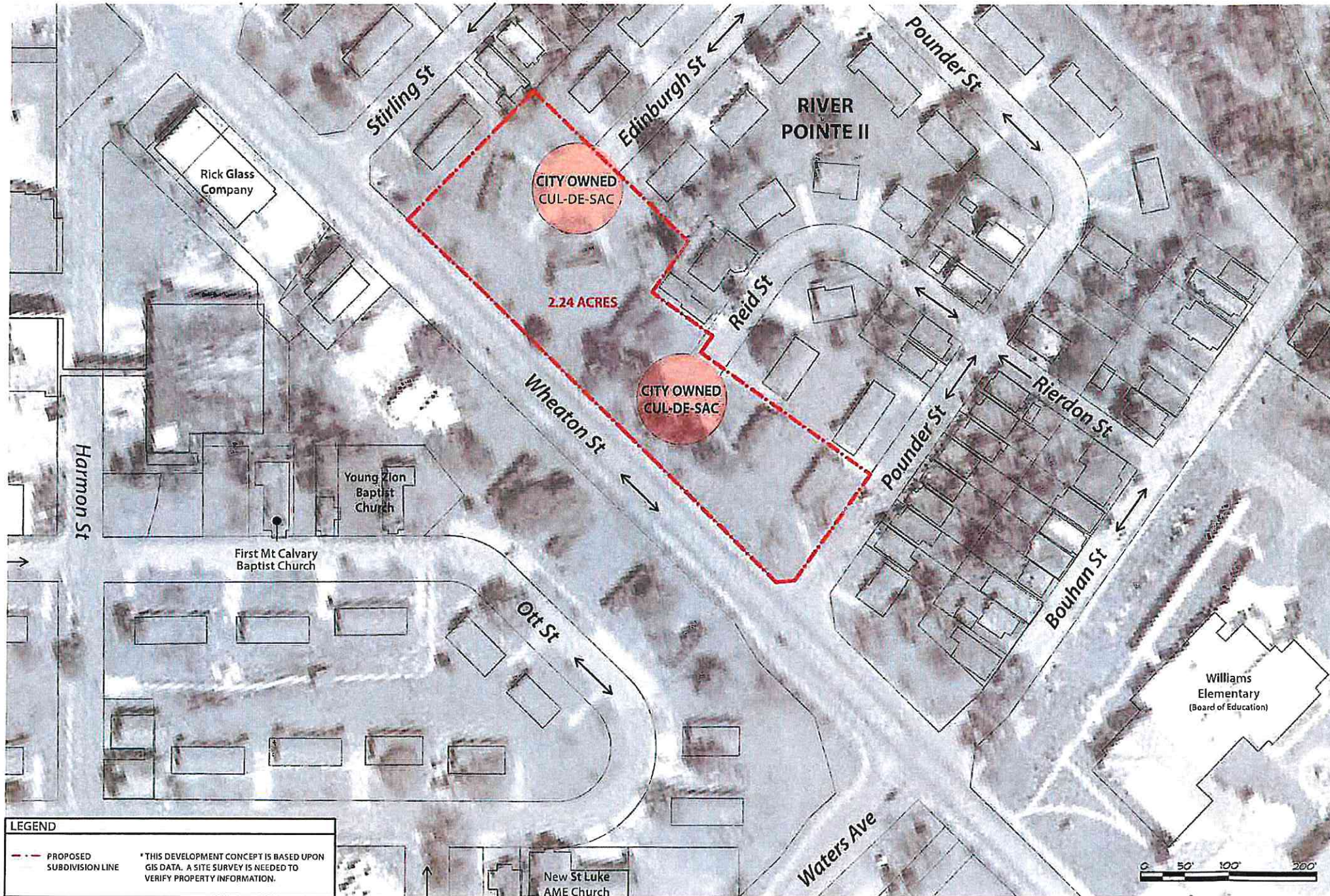


EXHIBIT A



LEGEND

--- PROPOSED SUBDIVISION LINE

* THIS DEVELOPMENT CONCEPT IS BASED UPON GIS DATA. A SITE SURVEY IS NEEDED TO VERIFY PROPERTY INFORMATION.

Kitchen & Associates

Architecture
Engineering
Planning
Interiors

154 Hillier Avenue
College Park, GA 30088
478.284.1100
kitchenandassociates.com

Date:	02-26-2019
Job #:	19021
Drawn:	CR/TJS
Mgr:	Planning
19021_PPI_Savannah	

Project North

River Pointe II - Phase II

Wheaton Street Savannah, GA

SP-00
PROPOSED DEVELOPMENT AREA

19021_Site-Clean.dwg 1:17 PM Wednesday, March 13, 2019
 All planning and architectural elements shown on this document are the intellectual property of Kitchen & Associates.