

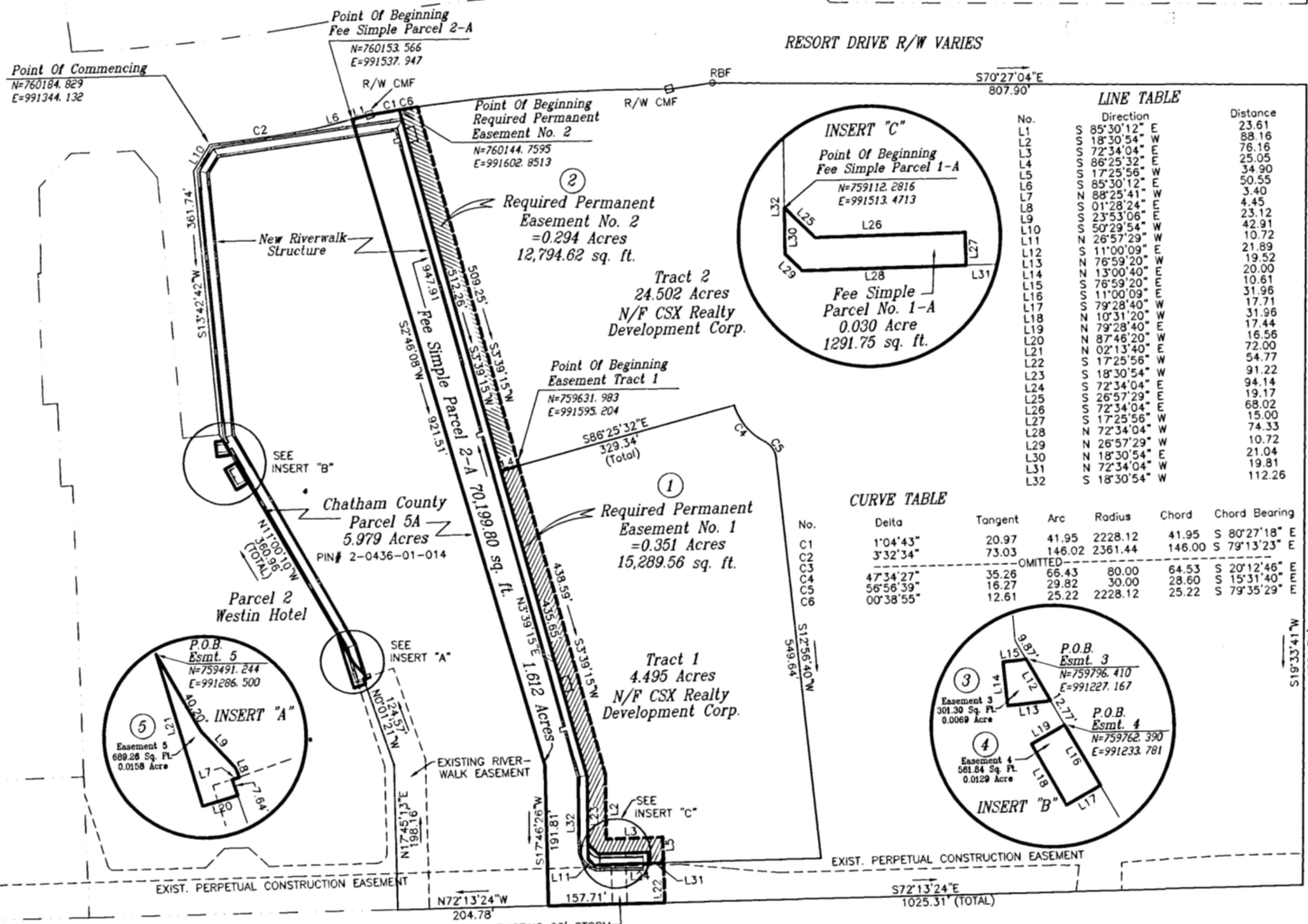


U.S. Army Corps of Engineers Depot
PIN# 2-0164-01-001

REFERENCES:
SUBDIVISION PLAT OF SAVANNAH HARBOR BY THOMAS & HUTTON ENGINEERING CO. DATED 3/3/00
SMB 19 "S" PG 99
PLAT OF PARCEL 5 SAVANNAH HARBOR SUBDIVISION BY THOMAS & HUTTON ENGINEERING CO.

ANGULAR ERROR: 1" PER POINT
ERROR OF CLOSURE: FIELD 1/28,854
ERROR OF CLOSURE: PLAT 1/898,000
EQUIPMENT USED: SOKKIA SET 4 TOTAL STATION
ADJUSTMENT METHOD: COMPASS RULE

CMS = CONCRETE MONUMENT SET
 CMF = CONCRETE MONUMENT FOUND
 IPF = IRON PIPE FOUND
 RBF = REBAR FOUND
 IPS = IRON PIPE SET



LINE TABLE

No.	Direction	Distance
L1	S 85°30'12" E	23.61
L2	S 18°30'54" W	88.16
L3	S 72°34'04" W	76.16
L4	S 86°25'32" E	25.05
L5	S 17°25'56" W	34.90
L6	S 85°30'12" E	50.55
L7	N 88°25'41" W	3.40
L8	S 01°28'24" E	4.45
L9	S 23°53'06" W	23.12
L10	S 50°29'54" W	42.91
L11	N 26°57'29" W	10.72
L12	S 11°00'09" E	21.89
L13	N 76°59'20" W	19.52
L14	N 13°00'40" W	20.00
L15	S 76°59'20" E	10.61
L16	S 11°00'09" W	31.96
L17	S 79°28'40" W	17.71
L18	N 10°31'20" W	31.96
L19	N 79°28'40" E	17.44
L20	N 87°46'20" W	16.56
L21	N 02°13'40" E	72.00
L22	S 17°25'56" W	54.77
L23	S 18°30'54" W	91.22
L24	S 72°34'04" E	94.14
L25	S 26°57'29" W	19.17
L26	S 72°34'04" E	68.02
L27	S 17°25'56" W	15.00
L28	N 72°34'04" W	74.33
L29	N 26°57'29" W	10.72
L30	N 18°30'54" E	21.04
L31	N 72°34'04" W	19.81
L32	S 18°30'54" W	112.26

CURVE TABLE

No.	Delta	Tangent	Arc	Radius	Chord	Chord Bearing
C1	1°04'43"	20.97	41.95	2228.12	41.95	S 80°27'18" E
C2	3°32'34"	73.03	146.02	2361.44	146.00	S 79°13'23" E
C3						
C4	47°34'27"	35.26	66.43	80.00	64.53	S 20°12'46" E
C5	56°56'39"	16.27	29.82	30.00	28.60	S 15°31'40" E
C6	00°38'55"	12.61	25.22	2228.12	25.22	S 79°35'29" E



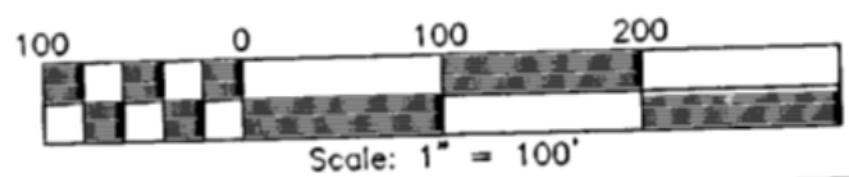
TO THE BEST OF MY KNOWLEDGE, INFORMATION AND BELIEF THE PROVISIONS RELATIVE TO GEORGIA CODE SECTION 15-6-67 (d) DO NOT REQUIRE APPROVAL OF THIS PLAT BY ANY GOVERNING AUTHORITY PRIOR TO THE RECORDING WITH THE CLERK OF SUPERIOR COURT.

THIS PLAT WAS COMPILED FROM VARIOUS MAPS, PLATS AND DEEDS OF RECORD AND HAS NOT BEEN VERIFIED IN ITS ENTIRETY BY FIELD SURVEY.

TO THE BEST OF MY KNOWLEDGE, INFORMATION AND BELIEF, ALL ANGLES, BEARINGS, MEASUREMENT OF COURSES, DISTANCES AND MONUMENT LOCATIONS ARE AS SHOWN AND HAVE BEEN PROVEN BY LAND SURVEY, AND IN MY OPINION THIS IS A CORRECT REPRESENTATION OF THE LAND PLATTED AND HAS BEEN PREPARED IN CONFORMITY WITH THE MINIMUM STANDARDS AND REQUIREMENTS OF GEORGIA LAW, 1978.

HBD
A Bell Company

Hussey, Gay, Bell, & DeYoung, Inc.
Consulting Engineers
329 Commercial Drive P.O. Box 14247
Savannah, Georgia, 31416
Tel. (912) 354-4626 Fax. (912) 354-6754
www.hgd.com



PLAT SHOWING REQUIRED PERMANENT EASEMENTS THROUGH VARIOUS PROPERTIES ON HUTCHINSON ISLAND, CITY OF SAVANNAH, CHATHAM COUNTY, GEORGIA.

FOR
CHATHAM COUNTY 25-P-4

REVISED: JULY 3, 2002
PLAT DATE: JUNE 19, 2002
DATE OF FIELD SURVEY: APRIL 8, 2002