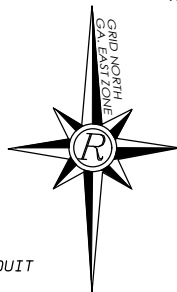


ABBREVIATION LEGEND

- LLL - LAND LOT LINE
- AKA - ALSO KNOWN AS
- BEF - BOUNDARY EVIDENCE FOUND
- CONC - CONCRETE
- POB - POINT OF BEGINNING
- POC - POINT OF COMMENCEMENT
- PL - PROPERTY LINE
- RBF - REBAR FOUND
- R/W - RIGHT OF WAY
- RWM - RIGHT OF WAY MONUMENT
- AG- - ABANDONED GAS LINE
- G- - GAS LINE
- UC- - UNDERGROUND COMMUNICATION
- UCC- - UNDERGROUND COMMUNICATION CONDUIT
- UE- - UNDERGROUND ELECTRIC
- W- - WATER LINE



50' UTILITY EASEMENT PER
EASEMENT AGREEMENT
RECORDED WITH STATE
PROPERTIES COMMISSION
8/28/1998 (009080)

EASEMENT DESCRIPTION

All that tract or parcel of land lying and being in the 2nd Georgia Militia District, Chatham County, Georgia and being more particularly described as follows:

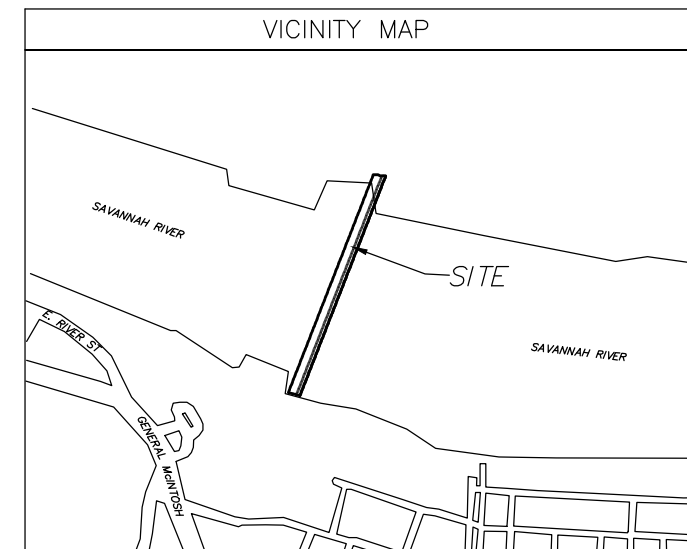
Beginning at a point on the land of now or formerly SRL Land Venture, LLC and having State Plane Coordinates of North 757719.21 and East 992685.11, Georgia East Zone; Thence proceeding across the Savannah River North 21 degrees 19 minutes 13 seconds East a distance of 982.24 feet to a point on the northern shoreline of the Savannah River; Thence along the northern shoreline of the Savannah River and the lands of now or formerly United States Corps of Engineers North 83 degrees 37 minutes 46 seconds East a distance of 8.56 feet to a point; Thence along the shoreline of now or formerly Georgia Port Authority North 81 degrees 26 minutes 26 seconds East a distance of 7.61 feet to a point; Thence proceeding across the Savannah River South 21 degrees 19 minutes 13 seconds West a distance of 986.23 feet to a point on the southern shoreline of the Savannah River; Thence along the southern shoreline of the Savannah River and the lands of now or formerly SRL Land Venture, LLC North 74 degrees 57 minutes 49 seconds West a distance of 15.09 feet to THE POINT OF BEGINNING.

Said tract or parcel of land contains 0.34 acres

50' CHATHAM
COUNTY EASEMENT
1.13 ACRES

50.0'

15.0'
15' AGL EASEMENT
0.34 AC



SURVEYOR'S NOTES

1. THE INFORMATION SHOWN HEREON IS BASED ON FIELD DATA DATED 02/20/19 & 2/21/19.
2. THIS PLAT HAS BEEN CALCULATED FOR CLOSURE AND IS FOUND TO BE ACCURATE WITHIN ONE FOOT IN 1,270,036 FEET. A TRIMBLE S-SERIES ROBOTIC TOTAL STATION WAS USED FOR ANGULAR AND LINEAR MEASUREMENTS.
3. THE HORIZONTAL DATUM FOR THIS SURVEY IS THE NORTH AMERICAN DATUM OF 1983 (NAD 83 GEORGIA EAST ZONE) AND THE VERTICAL DATUM USED IS THE NORTH AMERICAN VERTICAL DATUM OF 1988 (NAVD88) AS DETERMINED BY UTILIZING GPS. THE EQUIPMENT USED TO OBTAIN THIS DATA WAS A DUAL FREQUENCY TRIMBLE (R10) GNSS GPS RECEIVER WITH A TRIMBLE TSC3 DATA COLLECTOR RECEIVING RTK CORRECTIONS VIA A WIRELESS NETWORK FROM BASE STATIONS OPERATED BY TRIMBLE NAVIGATION. THE AVERAGE RELATIVE POSITIONAL ACCURACY OBTAINED ON THE POSITIONS UTILIZED IN THIS SURVEY WAS 0.04 FT. HORIZONTAL AND 0.07 FT. VERTICAL. THESE VALUES WERE DERIVED FROM GPS PROCESSING SOFTWARE. THE REMAINDER OF THE FIELD WORK WAS PERFORMED WITH CONVENTIONAL EQUIPMENT AS DESCRIBED ABOVE.
4. THIS SURVEY WAS PREPARED WITHOUT THE BENEFIT OF A CURRENT TITLE COMMITMENT; THEREFORE EXCEPTION IS MADE HEREIN TO ANY EASEMENTS, RESERVATIONS, RIGHTS OF WAY AND RESTRICTIONS OF RECORD, WHICH MAY EXIST. FURTHERMORE, THIS PROPERTY MAY BE SUBJECT TO EASEMENTS, RESERVATIONS, RIGHTS OF WAY, OR RESTRICTIONS, WHICH ARE NOT RECORDED OR NOT DISCLOSED BY THE TITLE COMMITMENT OR OTHERWISE UNKNOWN TO THE SURVEYOR; THEREFORE EXCEPTION IS TAKEN TO ANY SUCH ITEMS.
5. THIS PROPERTY MAY OR MAY NOT CONTAIN WETLAND AREAS. NO EFFORTS HAVE BEEN MADE BY THIS SURVEYOR TO IDENTIFY OR LOCATE ANY WETLAND AREAS ON THIS PROPERTY. A QUALIFIED WETLAND SPECIALIST OR BIOLOGIST, PRIOR TO ANY LAND DISTURBANCE, SHOULD PERFORM WETLAND IDENTIFICATION AND DELINEATION.

THIS BLOCK RESERVED FOR THE CLERK OF THE SUPERIOR COURT

SURVEYOR'S CERTIFICATION

I hereby certify to all parties interested in the title to the tract(s) of land (unless otherwise stated, hereinafter collectively referred to in the certificate and hereon as "the Land") surveyed and platted hereon, that this plat: (A) Is the result of a field survey and is an accurate, current and complete representation of the land surveyed and platted hereon; (B) Was prepared in conformity with, pursuant to, and is in compliance with: (1) the minimum standards and requirements of law; (2) OCGA §§ 15-6-67 - 69 amended through the date of this certificate; and (3) all applicable local, county, and municipal ordinances, statutes and specifications; (C) Shows that the Land is tied (in compliance with OCGA §§ 44-4-20 - 31 as amended through the date of this certificate) to the Georgia Coordinate System of 1985, East Zone, and shows the state plane coordinates of at least two permanent monuments on the survey, expressed in American Survey Feet, and also shows when a National Geodetic Survey monument is within 500 feet of any point on the property mapped or platted, or any point of reference shown thereon; (D) Shows that all bearings are referenced to Grid North, Georgia Coordinate System of 1985, East Zone; (E) Shows that all corners have been established and marked by either iron pins or concrete monuments which have been found, verified, labeled as to type and left in place; (F) Labels hereon a point of beginning which is located on the perimeter boundary; (G) Shows hereon in a "legend" the meanings of all abbreviations and symbols used; (H) Shows hereon the number, date and nature of all revisions of this plat; (I) Is eligible for recording to the Plat Book records in the office of the Clerk of Superior Court of any county or counties in which the Land totally or partially lies, and clearly indicates acres, land lots, sections, district by county(ies); and (J) Incorporates each specifically required item including any as set out in that certain services agreement(s) regarding this plat between the undersigned and _____ agency; and (K) an area map indicating the location of the property.

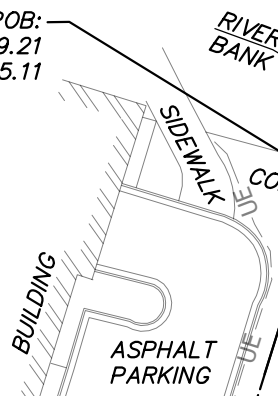


JARROD D. BLACK, GEORGIA RLS #003288 DATE OF PLAT OR MAP
jblack@rochester-assoc.com
Rochester and Associates, Inc.
LSF-000484
www.rochester-assoc.com

SAVANNAH RIVER

N/F
COLUMBIA PROPERTIES
SAVANNAH, LLC

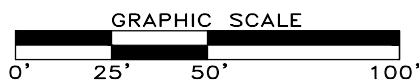
POB:
N: 757719.21
E: 992685.11



SEAWALL AT SOUTH
BANK OF RIVER

N/F
SRL LAND VENTURE LLC

CALL	BEARING	DISTANCE
L1	N21°19'13"E	982.24'
L2	N83°37'46"E	8.56'
L3	S81°26'26"E	7.61'
L4	S21°19'13"W	986.23'
L5	N74°57'49"W	15.09'



425 Oak Street N.W.
Gainesville, Georgia 30501
(770)718.0600 (770)718.9090 Fax
www.rochester-assoc.com

STATE OF GEORGIA
PROPERTIES COMMISSION

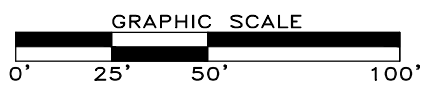
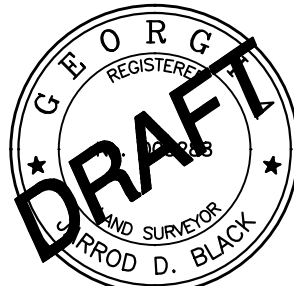
PERMANENT EASEMENT EXHIBIT

DRAWN	AJA	APPROVED	MSA	SCALE	1" = 50'
CHECKED	MSA	APPROVED	JDB		
CHECKED	JDB	FIELD DATE	2/20/19 & 2/21/19		GAS ESMT-EXH
PROJECT	G219016.AGL	PLAT DATE	7/24/19		SHEET 1 OF 2

THIS BLOCK RESERVED FOR THE CLERK OF THE SUPERIOR COURT

SURVEYOR'S CERTIFICATION
 I hereby certify to all parties interested in the title to the tract(s) of land (unless otherwise stated, hereinafter collectively referred to in the certificate and hereon as "the Land") surveyed and platted hereon, that this plat: (A) is the result of a field survey and is an accurate, current and complete representation of the land surveyed and platted hereon; (B) Was prepared in conformity with, pursuant to, and is in compliance with: (1) the minimum standards and requirements of law; (2) OCGA §§ 15-6-67 - 69 amended through the date of this certificate; and (3) all applicable local, county, and municipal ordinances, statutes and specifications; (C) Shows that the Land is tied (in compliance with OCGA §§ 44-4-20 - 31 as amended through the date of this certificate) to the Georgia Coordinate System of 1985, East Zone, and shows the state plane coordinates of at least two permanent monuments on the survey, expressed in American Survey Feet, and also shows when a National Geodetic Survey monument is within 500 feet of any point on the property mapped or platted, or any point of reference shown thereon; (D) Shows that all bearings are referenced to Grid North, Georgia Coordinate System of 1985, East Zone; (E) Shows that all corners have been established and marked by either iron pins or concrete monuments which have been found, verified, labeled as to type and left in place; (F) Labels hereon a point of beginning which is located on the perimeter boundary; (G) Shows hereon in a "legend" the meanings of all abbreviations and symbols used; (H) Shows hereon the number, date and nature of all revisions of this plat; (I) is eligible for recording to the Plat Book records in the office of the Clerk of Superior Court of any county or counties in which the Land totally or partially lies, and clearly indicates acres, land lots, sections, district by county(ies); and (J) Incorporates each specifically required item including any as set out in that certain services agreement(s) regarding this plat between the undersigned and _____ agency; and (K) an area map indicating the location of the property.

JARROD D. BLACK, GEORGIA RLS #003288
 DATE OF PLAT OR MAP _____
 jblack@rochester-assoc.com
 Rochester and Associates, Inc.
 LSF-000484
 www.rochester-assoc.com



MATCHLINE SHEET 2 SHEET 1

- ABBREVIATION LEGEND**
- LLL - LAND LOT LINE
 - AKA - ALSO KNOWN AS
 - BEF - BOUNDARY EVIDENCE FOUND
 - CONC - CONCRETE
 - POB - POINT OF BEGINNING
 - POC - POINT OF COMMENCEMENT
 - PL - PROPERTY LINE
 - RBF - REBAR FOUND
 - R/W - RIGHT OF WAY
 - RWM - RIGHT OF WAY MONUMENT
 - AG- - ABANDONED GAS LINE
 - G- - GAS LINE
 - UC- - UNDERGROUND COMMUNICATION
 - UCC- - UNDERGROUND COMMUNICATION CONDUIT
 - UE- - UNDERGROUND ELECTRIC
 - W- - WATER LINE

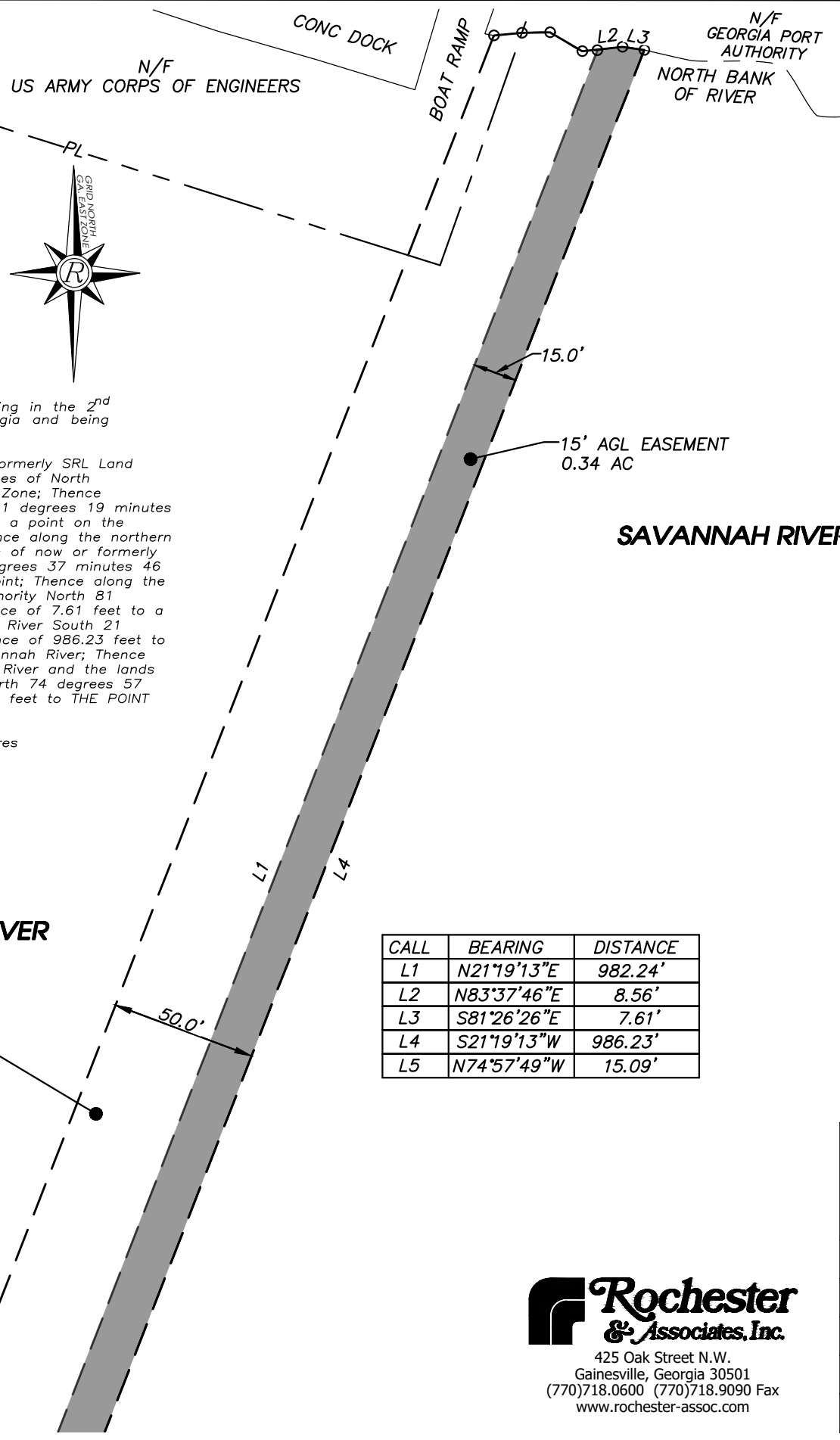
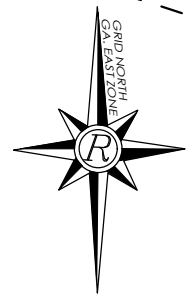
EASEMENT DESCRIPTION
 All that tract or parcel of land lying and being in the 2nd Georgia Militia District, Chatham County, Georgia and being more particularly described as follows:

Beginning at a point on the land of now or formerly SRL Land Venture, LLC and having State Plane Coordinates of North 757719.21 and East 992685.11, Georgia East Zone; Thence proceeding across the Savannah River North 21 degrees 19 minutes 13 seconds East a distance of 982.24 feet to a point on the northern shoreline of the Savannah River; Thence along the northern shoreline of the Savannah River and the lands of now or formerly United States Corps of Engineers North 83 degrees 37 minutes 46 seconds East a distance of 8.56 feet to a point; Thence along the shoreline of now or formerly Georgia Port Authority North 81 degrees 26 minutes 26 seconds East a distance of 7.61 feet to a point; Thence proceeding across the Savannah River South 21 degrees 19 minutes 13 seconds West a distance of 986.23 feet to a point on the southern shoreline of the Savannah River; Thence along the southern shoreline of the Savannah River and the lands of now or formerly SRL Land Venture, LLC North 74 degrees 57 minutes 49 seconds West a distance of 15.09 feet to THE POINT OF BEGINNING.

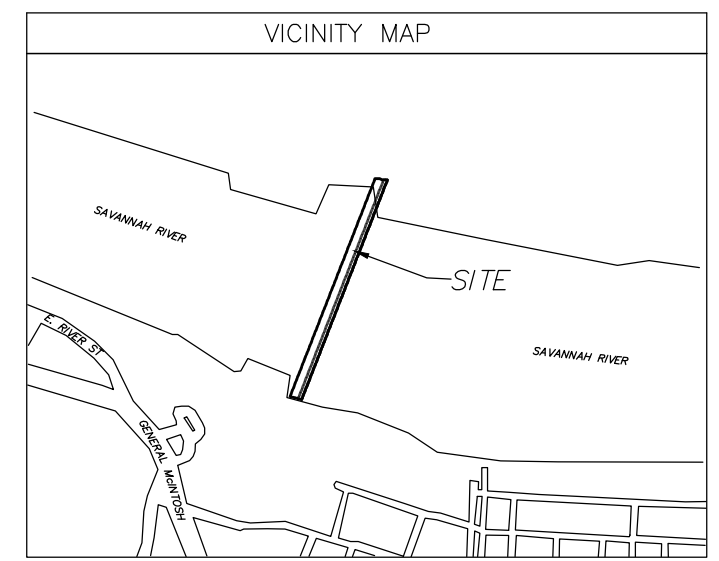
Said tract or parcel of land contains 0.34 acres

50' CHATHAM EASEMENT
1.13 ACRES

50' UTILITY EASEMENT PER
EASEMENT AGREEMENT
RECORDED WITH STATE
PROPERTIES COMMISSION
8/28/1998 (009080)



CALL	BEARING	DISTANCE
L1	N21°19'13"E	982.24'
L2	N83°37'46"E	8.56'
L3	S81°26'26"E	7.61'
L4	S21°19'13"W	986.23'
L5	N74°57'49"W	15.09'



- SURVEYOR'S NOTES**
1. THE INFORMATION SHOWN HEREON IS BASED ON FIELD DATA DATED 02/20/19 & 2/21/19.
 2. THIS PLAT HAS BEEN CALCULATED FOR CLOSURE AND IS FOUND TO BE ACCURATE WITHIN ONE FOOT IN 1,270,036 FEET. A TRIMBLE S-SERIES ROBOTIC TOTAL STATION WAS USED FOR ANGULAR AND LINEAR MEASUREMENTS.
 3. THE HORIZONTAL DATUM FOR THIS SURVEY IS THE NORTH AMERICAN DATUM OF 1983 (NAD 83 GEORGIA EAST ZONE) AND THE VERTICAL DATUM USED IS THE NORTH AMERICAN VERTICAL DATUM OF 1988 (NAVD88) AS DETERMINED BY UTILIZING GPS. THE EQUIPMENT USED TO OBTAIN THIS DATA WAS A DUAL FREQUENCY TRIMBLE (R10) GNSS GPS RECEIVER WITH A TRIMBLE TSC3 DATA COLLECTOR RECEIVING RTK CORRECTIONS VIA A WIRELESS NETWORK FROM BASE STATIONS OPERATED BY TRIMBLE NAVIGATION. THE AVERAGE RELATIVE POSITIONAL ACCURACY OBTAINED ON THE POSITIONS UTILIZED IN THIS SURVEY WAS 0.04 FT. HORIZONTAL AND 0.07 FT. VERTICAL. THESE VALUES WERE DERIVED FROM GPS PROCESSING SOFTWARE. THE REMAINDER OF THE FIELD WORK WAS PERFORMED WITH CONVENTIONAL EQUIPMENT AS DESCRIBED ABOVE.
 4. THIS SURVEY WAS PREPARED WITHOUT THE BENEFIT OF A CURRENT TITLE COMMITMENT; THEREFORE EXCEPTION IS MADE HEREIN TO ANY EASEMENTS, RESERVATIONS, RIGHTS OF WAY AND RESTRICTIONS OF RECORD, WHICH MAY EXIST. FURTHERMORE, THIS PROPERTY MAY BE SUBJECT TO EASEMENTS, RESERVATIONS, RIGHTS OF WAY, OR RESTRICTIONS, WHICH ARE NOT RECORDED OR NOT DISCLOSED BY THE TITLE COMMITMENT OR OTHERWISE UNKNOWN TO THE SURVEYOR; THEREFORE EXCEPTION IS TAKEN TO ANY SUCH ITEMS
 5. THIS PROPERTY MAY OR MAY NOT CONTAIN WETLAND AREAS. NO EFFORTS HAVE BEEN MADE BY THIS SURVEYOR TO IDENTIFY OR LOCATE ANY WETLAND AREAS ON THIS PROPERTY. A QUALIFIED WETLAND SPECIALIST OR BIOLOGIST, PRIOR TO ANY LAND DISTURBANCE, SHOULD PERFORM WETLAND IDENTIFICATION AND DELINEATION.

STATE OF GEORGIA PROPERTIES COMMISSION			
PERMANENT EASEMENT EXHIBIT			
DRAWN	AJA	APPROVED	MSA
CHECKED	MSA	APPROVED	JDB
CHECKED	JDB	FIELD DATE	2/20/19 & 2/21/19
PROJECT	G219016.AGL	PLAT DATE	7/24/19
			SCALE 1" = 50'
			GAS ESMT-EXH
			SHEET 2 OF 2

Rochester & Associates, Inc.
 425 Oak Street N.W.
 Gainesville, Georgia 30501
 (770)718.0600 (770)718.9090 Fax
 www.rochester-assoc.com