



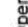

THIS MAP IS A COMPILATION OF INFORMATION FROM VARIOUS SOURCES AND SCALES. IN MOST CASES THE INFORMATION HAS NOT BEEN FIELD VERIFIED. USE THIS MAP FOR GENERAL PLANNING PURPOSES ONLY.



1 inch = 1,200 feet

# FUTURE LAND USE

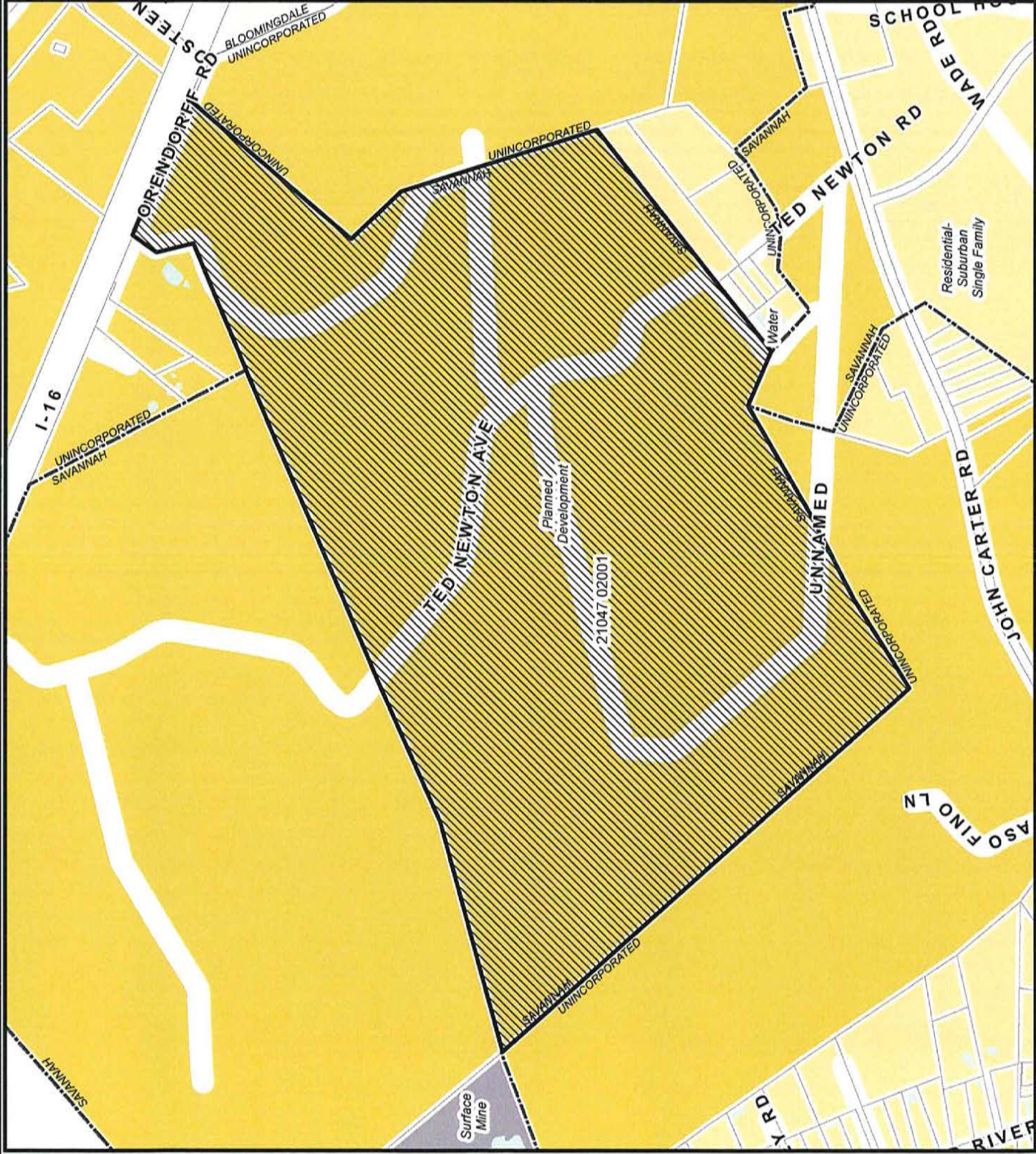
File: 22-000807-ZA  
 Address: 500 John Carter Rd.  
 Savannah, Ga  
 Aldermanic District: -  
 Commission District: 7 - Kicklighter  
 Neighborhood: See Map  
 Property ID: See Map

-  Open Water
-  Residential- Suburban Single Family
-  Planned Development
-  Surface Mine

Date: 2/24/2022



CHATHAM COUNTY - SAVANNAH  
**METROPOLITAN PLANNING COMMISSION**  
 110 E. STATE ST. SAVANNAH, GA 31412-8246 PHONE 912-851-1440

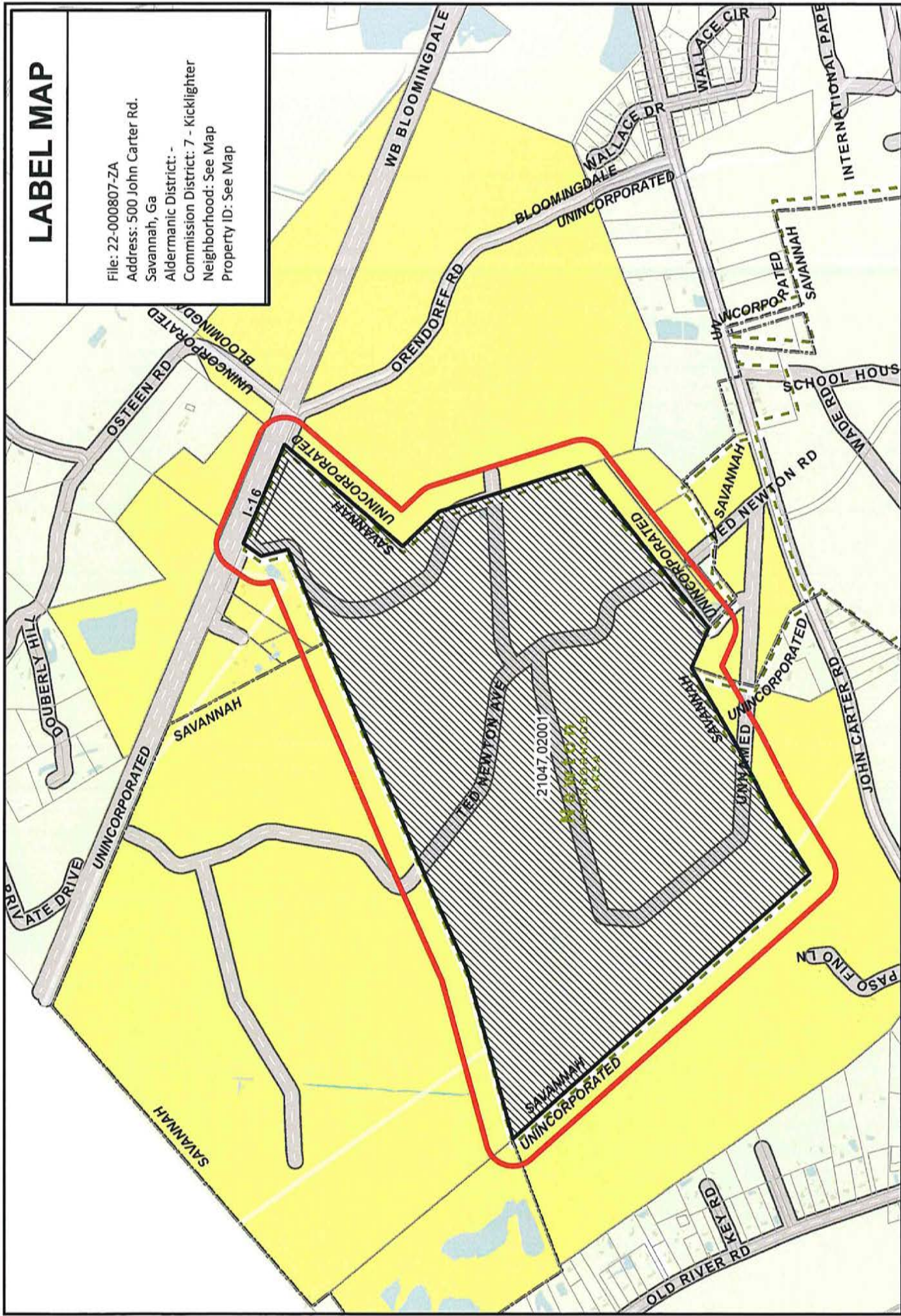


1 inch = 1,200 feet

THIS MAP IS A COMPILATION OF INFORMATION FROM VARIOUS SOURCES AND SCALES. IN MOST CASES THE INFORMATION HAS NOT BEEN FIELD VERIFIED. USE THIS MAP FOR GENERAL PLANNING PURPOSES ONLY.

# LABEL MAP

File: 22-000807-ZA  
Address: 500 John Carter Rd.  
Savannah, Ga  
Aldermanic District: -  
Commission District: 7 - Kicklighter  
Neighborhood: See Map  
Property ID: See Map



CHATHAM COUNTY - SAVANNAH  
**METROPOLITAN PLANNING COMMISSION**  
110 E. STATE ST. SAVANNAH, GA 31412-8246 PHONE 912-651-1440



1 inch = 1,500 feet



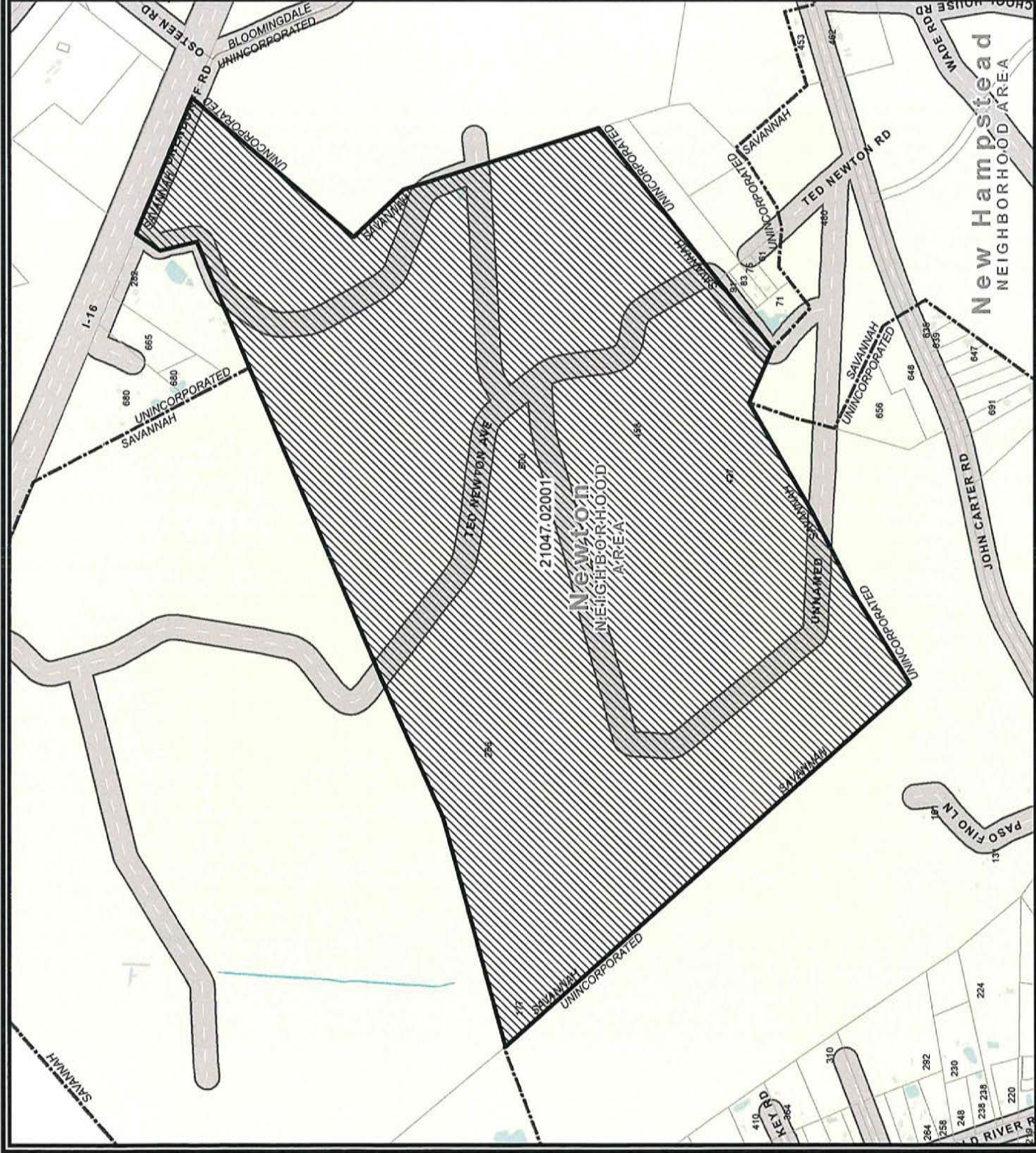
Date: 2/24/2022

THIS MAP IS A COMPILATION OF INFORMATION FROM VARIOUS SOURCES AND SCALES. IN MOST CASES THE INFORMATION HAS NOT BEEN FIELD VERIFIED.  
**USE THIS MAP FOR GENERAL PLANNING PURPOSES ONLY.**

# TAX MAP

File: 22-000807-ZA  
Address: 500 John Carter Rd.  
Savannah, Ga  
Aldermanic District: -  
Commission District: 7 - Kicklighter  
Neighborhood: See Map  
Property ID: See Map

Date: 2/24/2022  
  
CHATHAM COUNTY - SAVANNAH  
METROPOLITAN PLANNING COMMISSION  
110 E. STATE ST. SAVANNAH, GA 31412-8245 PHONE 912-651-1440



1 inch = 1,200 feet

THIS MAP IS A COMPILATION OF INFORMATION FROM VARIOUS SOURCES AND SCALES. IN MOST CASES THE INFORMATION HAS NOT BEEN FIELD VERIFIED. USE THIS MAP FOR GENERAL PLANNING PURPOSES ONLY.

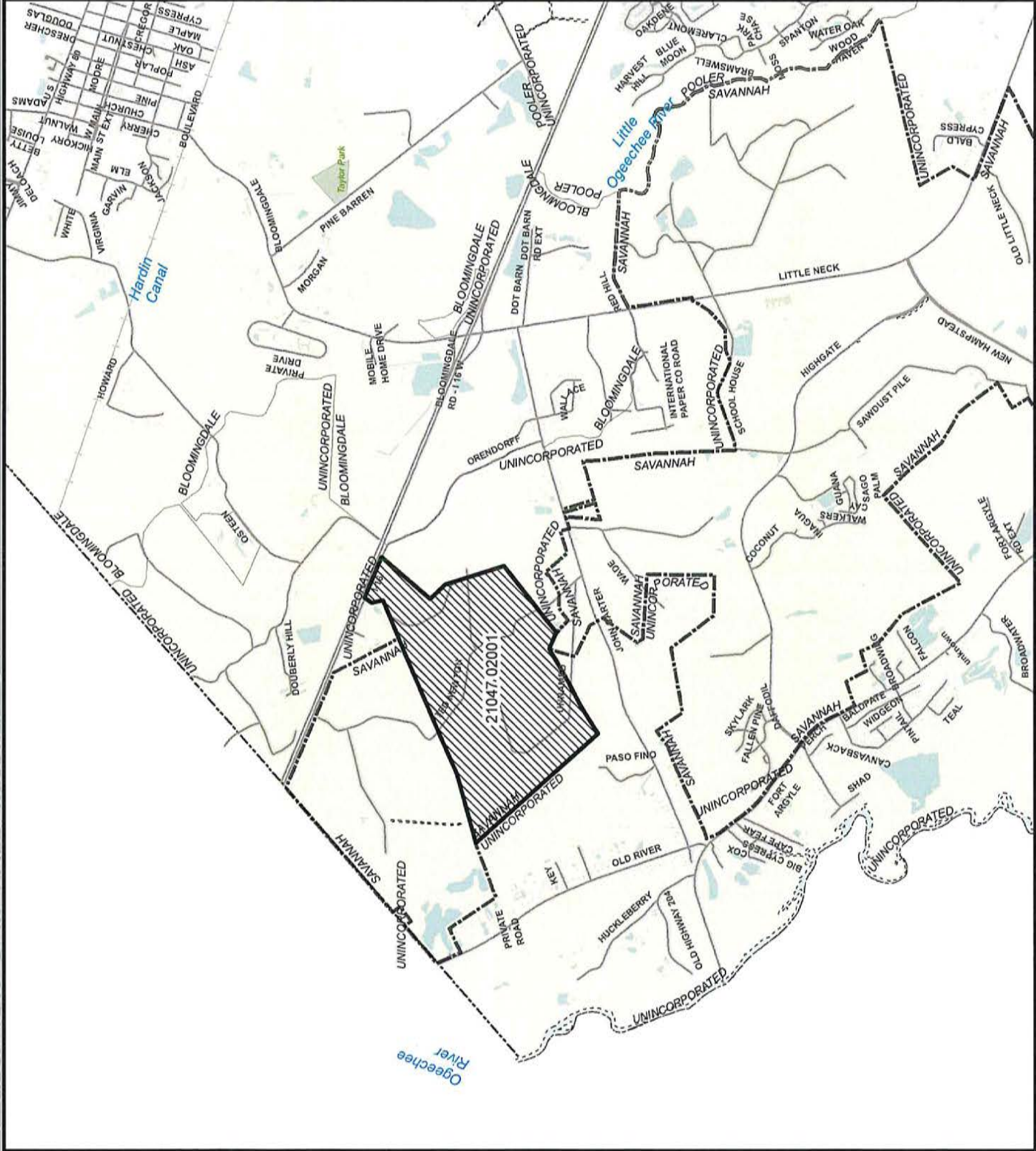
# VICINITY MAP

File: 22-000807-ZA  
 Address: 500 John Carter Rd.  
 Savannah, Ga  
 Aldermanic District: -  
 Commission District: 7 - Kicklighter  
 Neighborhood: See Map  
 Property ID: See Map

Date: 2/24/2022

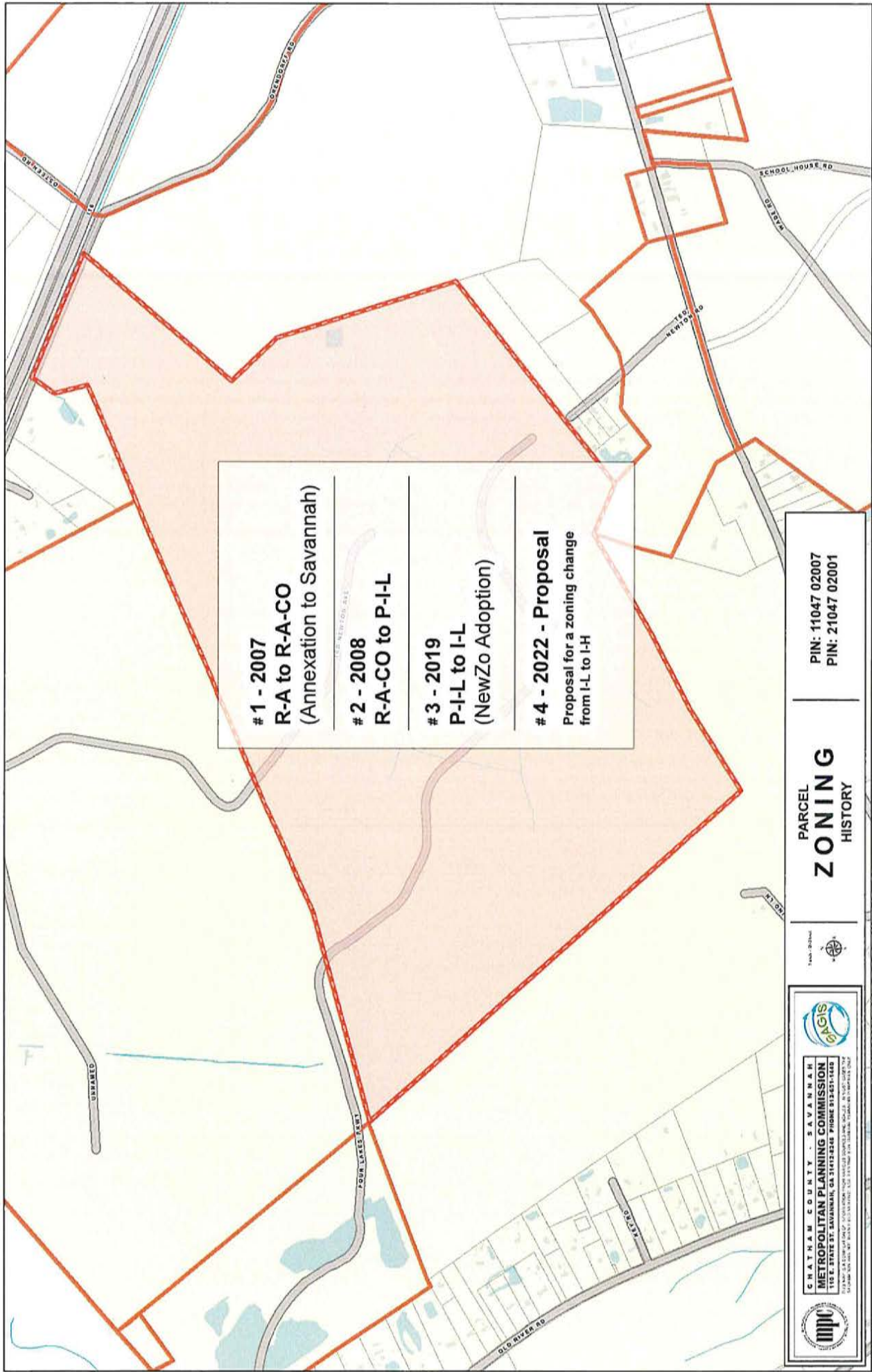


CHATHAM COUNTY - SAVANNAH  
 METROPOLITAN PLANNING COMMISSION  
 110 E. STATE ST. SAVANNAH, GA 31412-9246 PHONE 912-551-1440



1 inch = 4,000 feet

THIS MAP IS A COMPILATION OF INFORMATION FROM VARIOUS SOURCES AND SCALES. IN MOST CASES THE INFORMATION HAS NOT BEEN FIELD VERIFIED. USE THIS MAP FOR GENERAL PLANNING PURPOSES ONLY.



# 1 - 2007  
R-A to R-A-CO  
(Annexation to Savannah)

---

# 2 - 2008  
R-A-CO to P-I-L

---

# 3 - 2019  
P-I-L to I-L  
(NewZo Adoption)

---

# 4 - 2022 - Proposal  
Proposal for a zoning change  
from I-L to I-H

PIN: 11047 02007  
PIN: 21047 02001

PARCEL  
**ZONING**  
HISTORY



CHATHAM COUNTY SAVANNAH  
METROPOLITAN PLANNING COMMISSION  
110 S. BRIDGE ST., SAVANNAH, GA 31401-1404 PHONE: 912.321.1118  
WWW.MPC-SAVANNAH.COM FAX: 912.321.1119



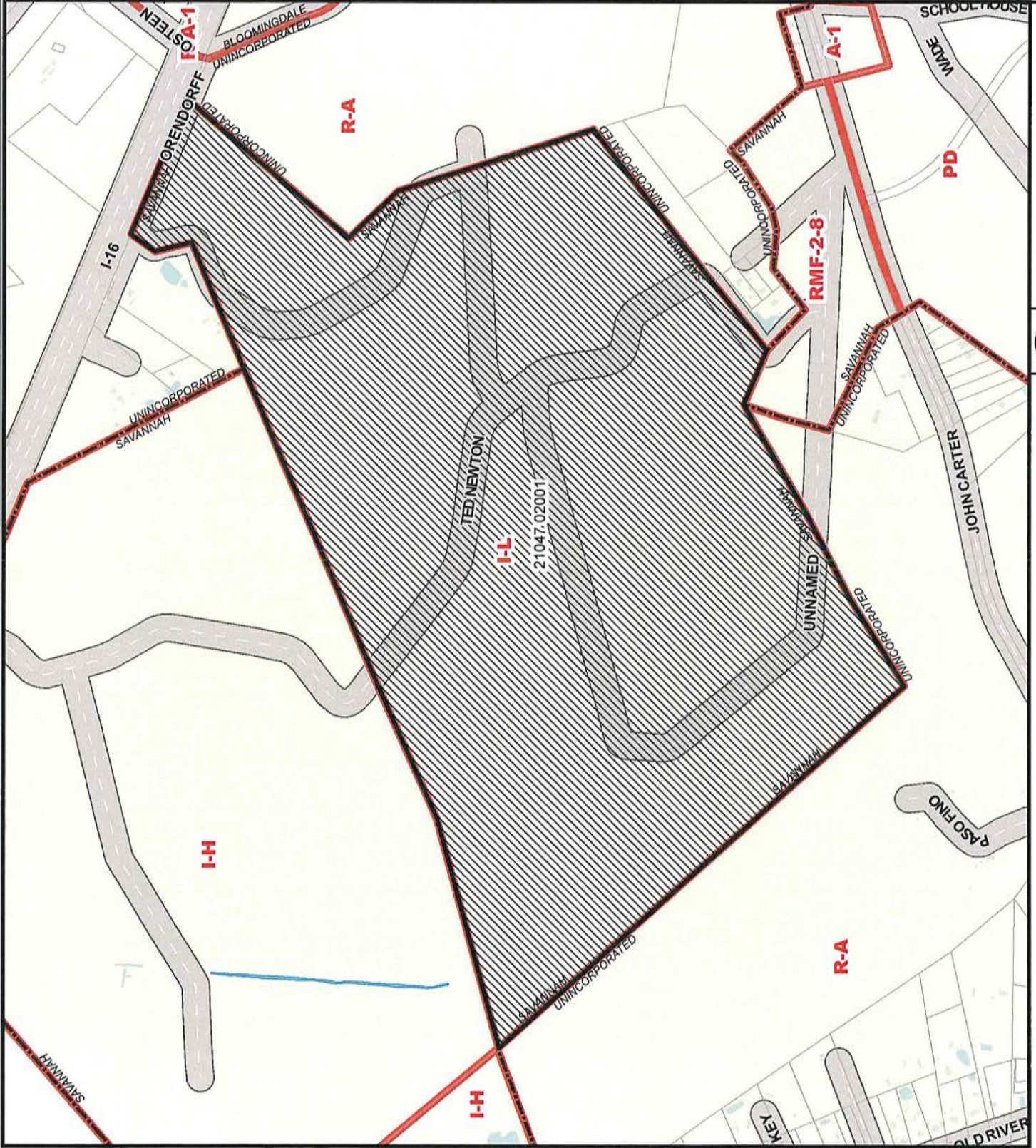

# ZONING MAP

File: 22-000807-ZA  
 Address: 500 John Carter Rd.  
 Savannah, Ga  
 Aldermanic District: -  
 Commission District: 7 - Kicklighter  
 Neighborhood: See Map  
 Property ID: See Map

Date: 2/24/2022



CHATHAM COUNTY - SAVANNAH  
 METROPOLITAN PLANNING COMMISSION  
 110 E. STATE ST. SAVANNAH, GA 31412-5246 PHONE 912-651-1440



1 inch = 1,200 feet

THIS MAP IS A COMPILATION OF INFORMATION FROM VARIOUS SOURCES AND SCALES. IN MOST CASES THE INFORMATION HAS NOT BEEN FIELD VERIFIED. USE THIS MAP FOR GENERAL PLANNING PURPOSES ONLY.