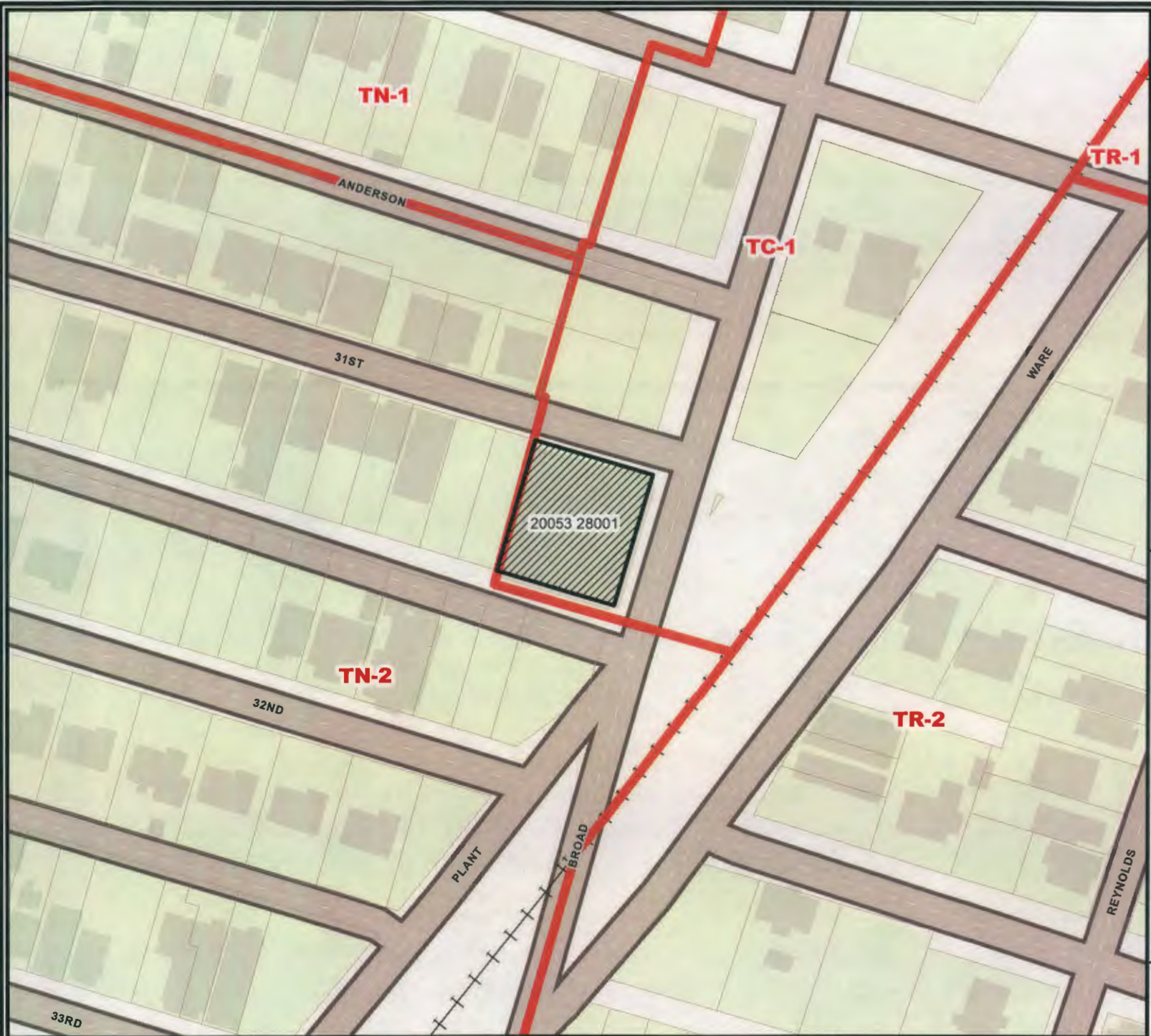



ZONING MAP

SPECIAL USE APPLICATION

File: 22-003392-ZA
Address: 1501 E. Broad St.
Savannah, Ga
Aldermanic District: 2 - Leggett
Commission District: 2 - Rivers
Neighborhood: See Map
Property ID: See Map



 ZONING

Date: 7/28/2022



CHATHAM COUNTY - SAVANNAH
METROPOLITAN PLANNING COMMISSION
110 E. STATE ST. SAVANNAH, GA 31412-8246 PHONE 912-651-1440

THIS MAP IS A COMPILATION OF INFORMATION FROM VARIOUS SOURCES AND SCALES. IN MOST CASES THE INFORMATION HAS NOT BEEN FIELD VERIFIED. USE THIS MAP FOR GENERAL PLANNING PURPOSES ONLY.



1 inch = 100 feet



TAX MAP

SPECIAL USE APPLICATION

File: 22-003392-ZA
 Address: 1501 E. Broad St.
 Savannah, Ga
 Aldermanic District: 2 - Leggett
 Commission District: 2 - Rivers
 Neighborhood: See Map
 Property ID: See Map

1501
 20053 28001

Midtown
 NEIGHBORHOOD
 AREA

Dixon Park
 NEIGHBORHOOD
 AREA

Eastside
 NEIGHBORHOOD
 AREA

THIS MAP IS A COMPILATION OF INFORMATION FROM VARIOUS SOURCES AND SCALES. IN MOST CASES THE INFORMATION HAS NOT BEEN FIELD VERIFIED. USE THIS MAP FOR GENERAL PLANNING PURPOSES ONLY.

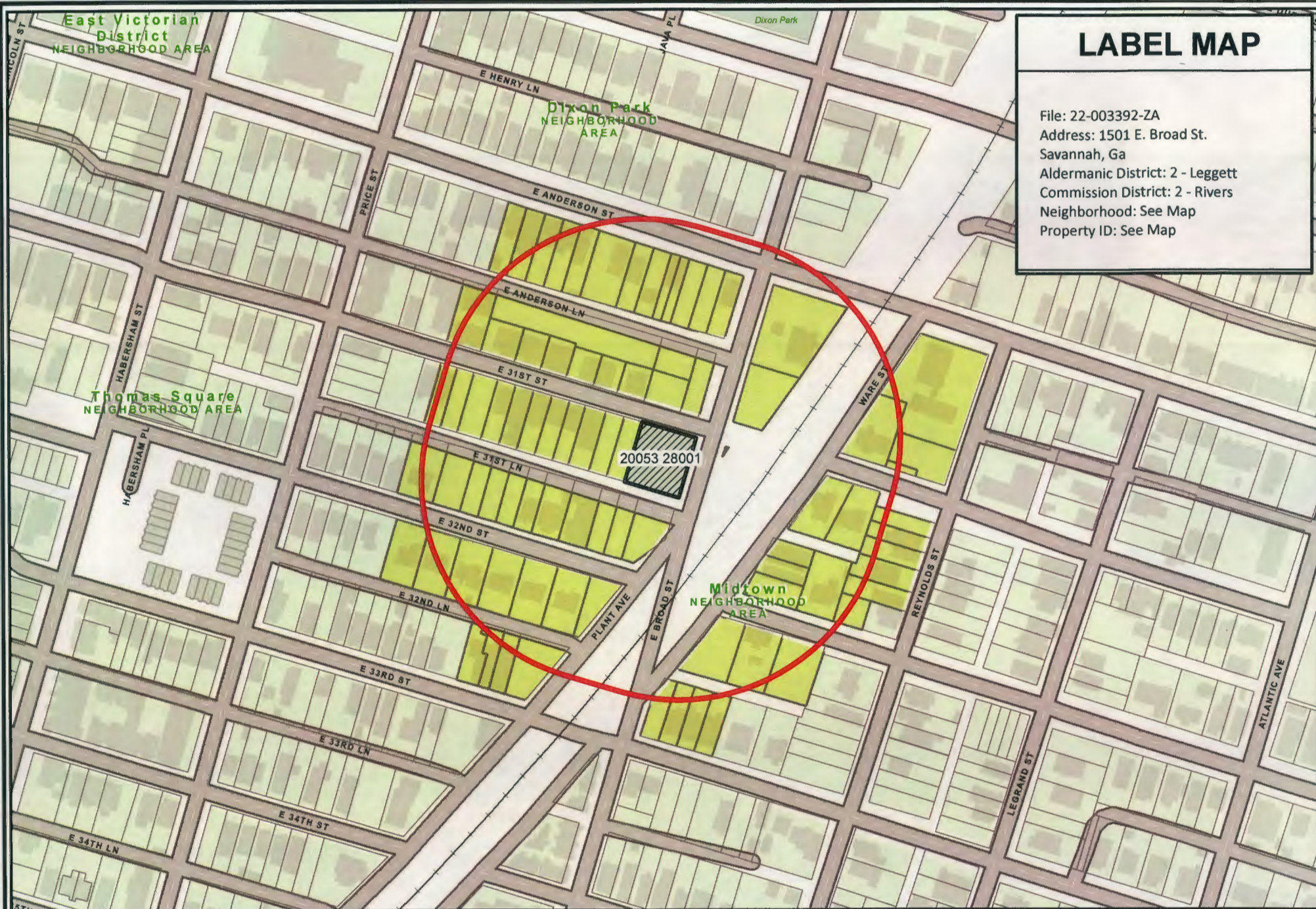


1 inch = 100 feet



Date: 7/28/2022

CHATHAM COUNTY - SAVANNAH
METROPOLITAN PLANNING COMMISSION
 110 E. STATE ST. SAVANNAH, GA 31412-8248 PHONE 912-651-1440



LABEL MAP

File: 22-003392-ZA
 Address: 1501 E. Broad St.
 Savannah, Ga
 Aldermanic District: 2 - Leggett
 Commission District: 2 - Rivers
 Neighborhood: See Map
 Property ID: See Map

THIS MAP IS A COMPILATION OF INFORMATION FROM VARIOUS SOURCES AND SCALES. IN MOST CASES THE INFORMATION HAS NOT BEEN FIELD VERIFIED.
USE THIS MAP FOR GENERAL PLANNING PURPOSES ONLY.



1 inch = 200 feet

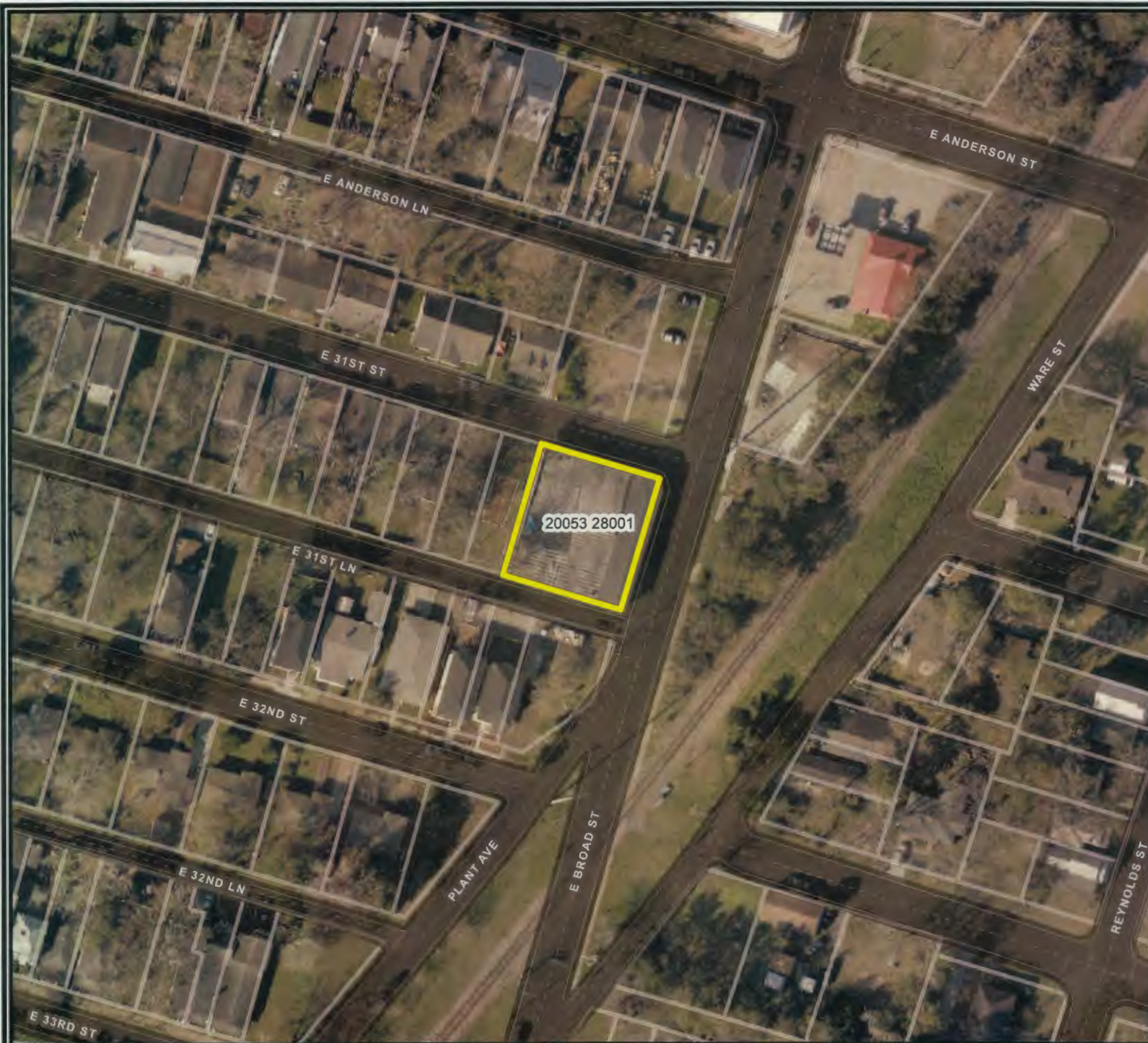


CHATHAM COUNTY - SAVANNAH
METROPOLITAN PLANNING COMMISSION
 110 E. STATE ST. SAVANNAH, GA 31412-8246 PHONE 912-651-1440

AERIAL MAP

SPECIAL USE APPLICATION

File: 22-003392-ZA
Address: 1501 E. Broad St.
Savannah, Ga
Aldermanic District: 2 - Leggett
Commission District: 2 - Rivers
Neighborhood: See Map
Property ID: See Map



20053 28001

Date: 7/28/2022



CHATHAM COUNTY - SAVANNAH
METROPOLITAN PLANNING COMMISSION
110 E. STATE ST. SAVANNAH, GA 31412-8246 PHONE 912-651-1440

THIS MAP IS A COMPILATION OF INFORMATION FROM VARIOUS SOURCES AND SCALES. IN MOST CASES THE INFORMATION HAS NOT BEEN FIELD VERIFIED. USE THIS MAP FOR GENERAL PLANNING PURPOSES ONLY.



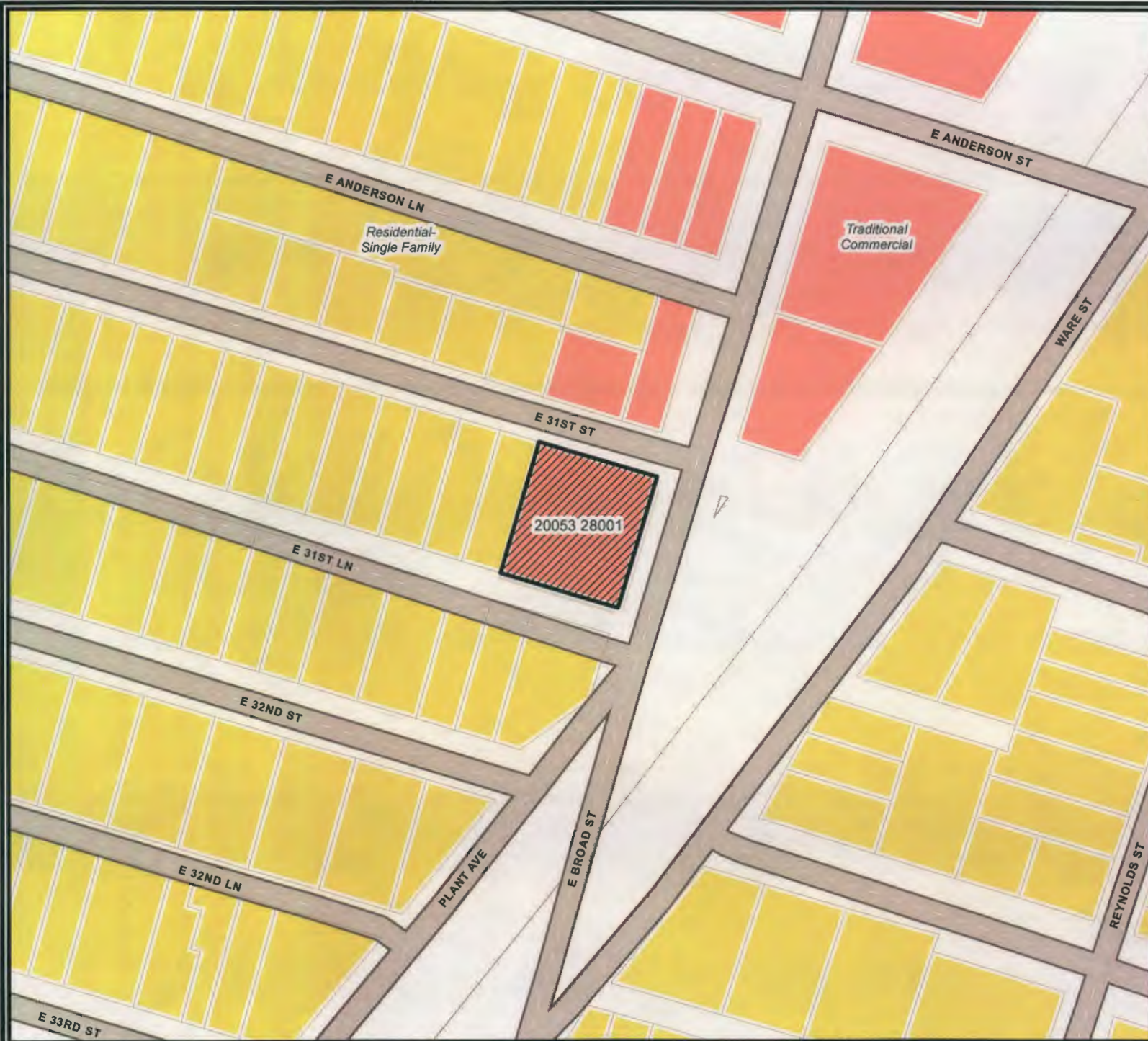
1 inch = 100 feet

D

FUTURE LAND USE

SPECIAL USE APPLICATION

File: 22-003392-ZA
Address: 1501 E. Broad St.
Savannah, Ga
Aldermanic District: 2 - Leggett
Commission District: 2 - Rivers
Neighborhood: See Map
Property ID: See Map



Traditional Commercial
Residential- Single Family

Date: 7/28/2022



CHATHAM COUNTY - SAVANNAH
METROPOLITAN PLANNING COMMISSION
110 E. STATE ST. SAVANNAH, GA 31412-8246 PHONE 912-651-1440

THIS MAP IS A COMPILATION OF INFORMATION FROM VARIOUS SOURCES AND SCALES. IN MOST CASES THE INFORMATION HAS NOT BEEN FIELD VERIFIED. USE THIS MAP FOR GENERAL PLANNING PURPOSES ONLY.



1 inch = 100 feet

D