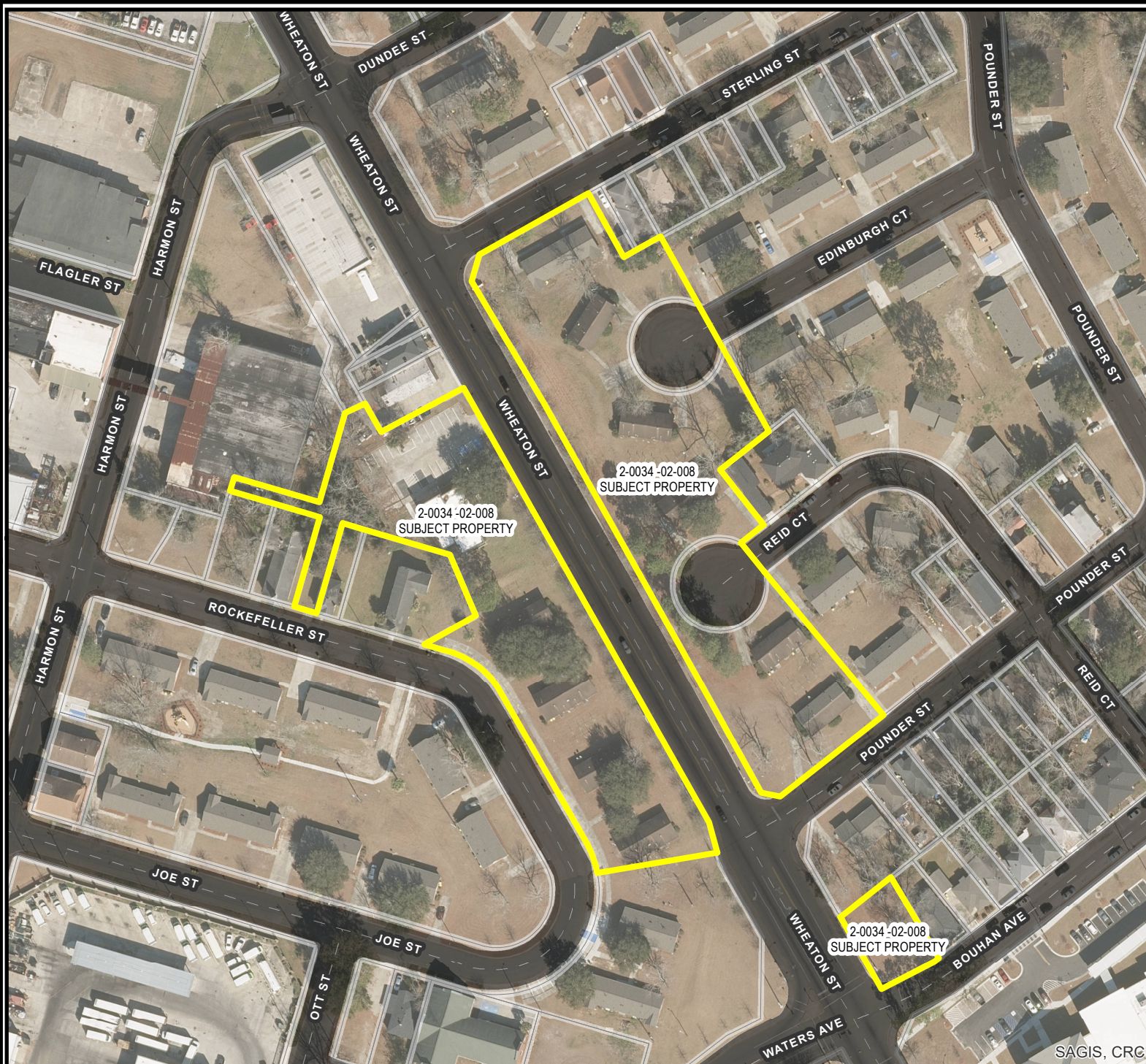


AERIAL MAP

FILE # 19-000874-ZA
Address: Wheaton St.
Savannah, Ga
Aldermanic District: 3 (Hall) & 2 (Durrence)
Commission District: 2 (Holmes)
Neighborhood: Blackshear/Eastside
Benjamin Van Clark Park Area
PIN(s): See Map



THIS MAP IS A COMPILATION OF INFORMATION FROM VARIOUS SOURCES AND SCALES. IN MOST CASES THE INFORMATION HAS NOT BEEN FIELD VERIFIED. USE THIS MAP FOR GENERAL PLANNING PURPOSES ONLY.



1 inch = 150 feet

D



2/21/2019

CHATHAM COUNTY · SAVANNAH
METROPOLITAN PLANNING COMMISSION
110 E. STATE ST. SAVANNAH, GA 31412-8246 PHONE 912-651-1440