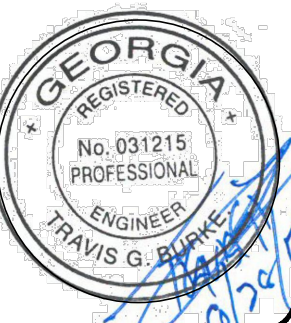


GRID NORTH - DRAW IMAGES

COLEMAN COMPANY, INC.
17 PARK OF COMMERCE, SUITE 201
SAVANNAH, GA 31405
(404) 912.200.3041 | (7) 912.200.3056



REVISION	DATE	BY
10/25/2016	REVISIONS PER NCS & CITY OF SAVANNAH COMMENTS	
11/30/2016	REVISIONS PER CITY OF SAVANNAH COMMENTS	
2/17/2017	REVISIONS PER LOT WIDTH	

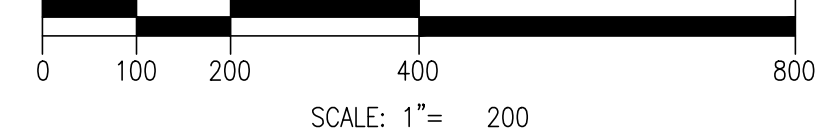
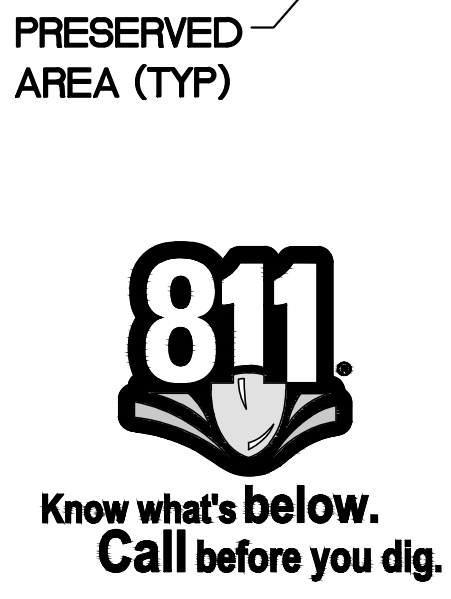
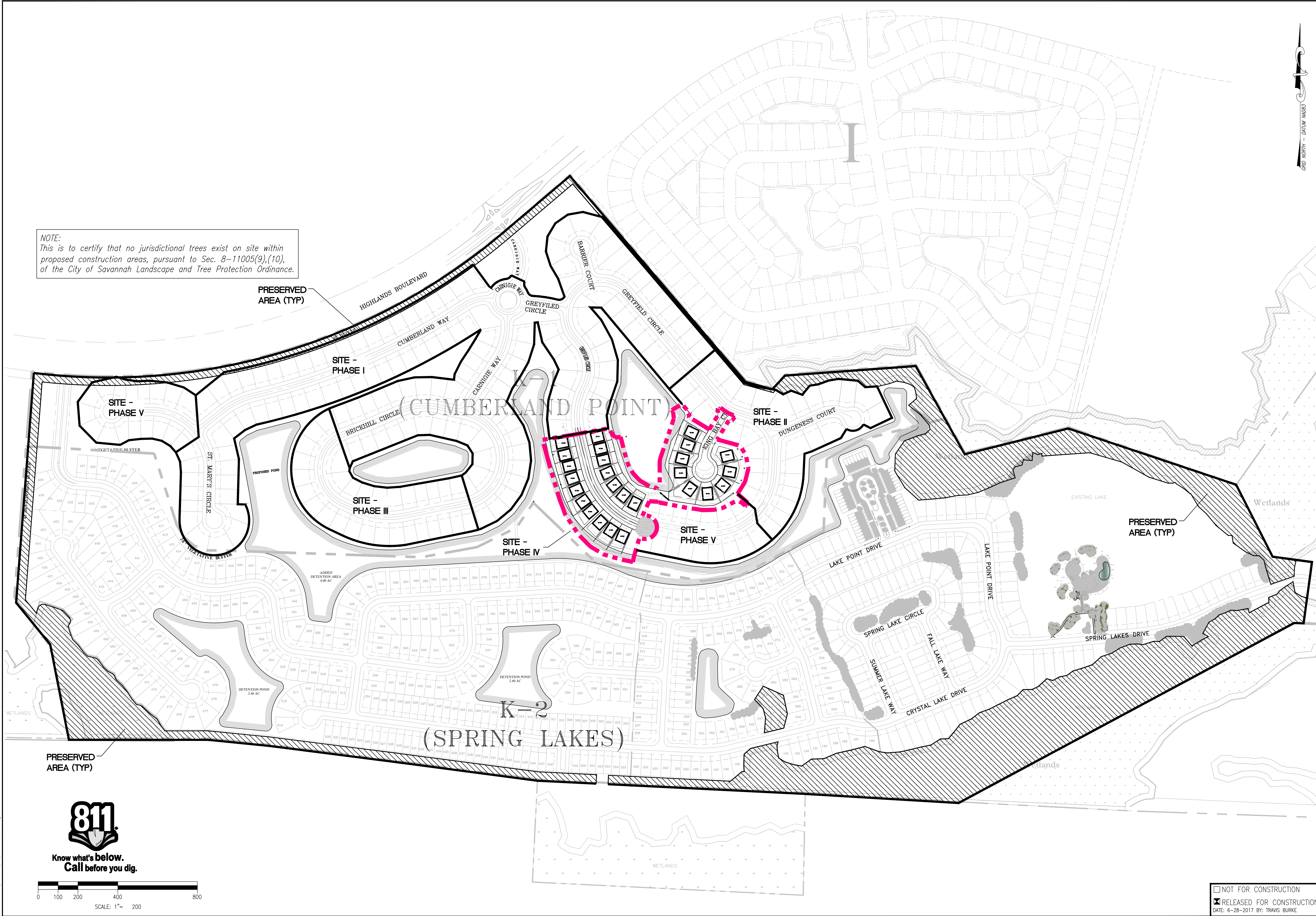
CIVIL CONSTRUCTION PLANS FOR
CUMBERLAND POINT PHASE IV AT THE HIGHLANDS
LOCATED IN: SAVANNAH, GEORGIA
PREPARED FOR: COASTAL GEORGIA DEVELOPMENT GROUP, INC.

MASTER PLAN

DATE: 2/20/2017
SCALE: 1"=200'
JOB #: 16-170.000
DRAWN BY: MDP
CHECKED BY: TGB

SHEET
CM-1.3

NOTE:
This is to certify that no jurisdictional trees exist on site within proposed construction areas, pursuant to Sec. 8-11005(9),(10), of the City of Savannah Landscape and Tree Protection Ordinance.



NOT FOR CONSTRUCTION
 RELEASED FOR CONSTRUCTION
 DATE: 6-28-2017 BY: TRAVIS BURKE

Thu, 24 May 2018 10:57:00 AM
DRAWING: 16-170.000 (CM-1.3) (16-170.000)_061718.dwg