

SAVANNAH DOWNTOWN STREETSCAPES

CITY COUNCIL WORKSHOP

AUGUST 17, 2017



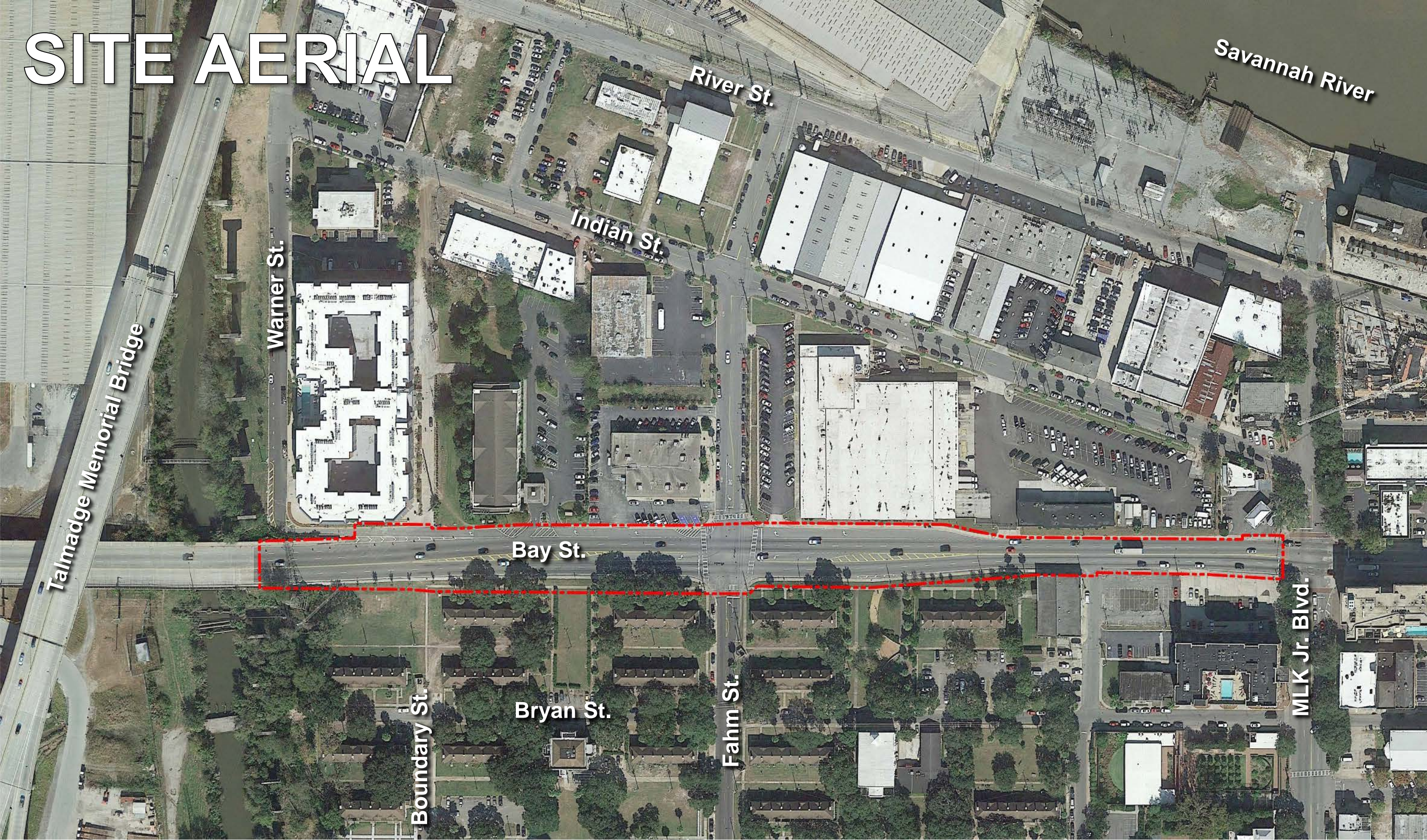
PROJECT GOALS

- Improve historic downtown's most prominent urban corridors
 - Broughton Street
 - Bay Street
 - River Street
- Realize each street's full potential as a rich and varied pedestrian experience
- Build design solutions on previous studies
 - Downtown Master Plan (2011)
 - Broughton Street Streetscape Improvement Plan (2008)
 - Broughton Street Landscape Analysis and Plan (2005)
 - Draft River Street Vision and Gateway Plan (2010)
 - Downtown Streetscape Initiative (2015)
 - Parking Matters (2017)
- Focus on implementation

SITE AERIAL



SITE AERIAL



Savannah River

River St.

Indian St.

Warner St.

Bay St.

Boundary St.

Bryan St.

Fahm St.

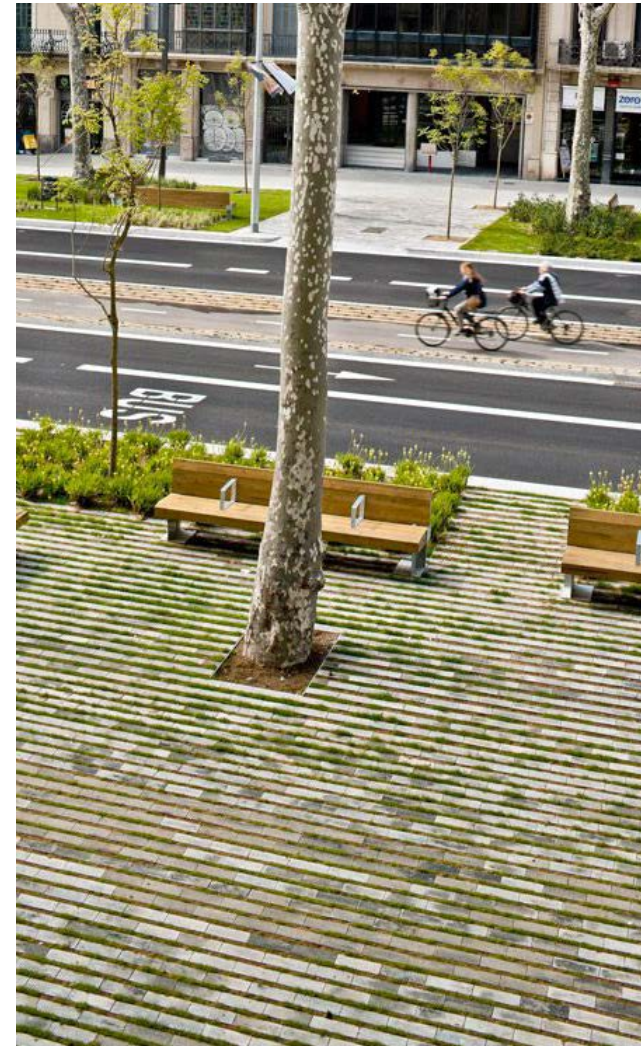
MLK Jr. Blvd.

Talmadge Memorial Bridge

FOCUS AREAS

- Pedestrian and ADA Safety
- Bicycle Safety
- Vehicular Functionality
- Smart Transportation Design
- Historic Preservation
- Visual Identity
- Activities and Events

**RESIDENT AND
GUEST
EXPERIENCE!**



CONCEPTUAL DESIGN PROCESS

- Utilize findings from both the analysis and the **stakeholder input** to drive the conceptual design.
- Design each street to its **complete, ultimate state**.
- Develop **comprehensive design**—not limited by budgets and/or timelines.
- Able to **phase in specific elements** as funding becomes available.
- Ensure a **unified, cohesive, and high quality design** that addresses all of the needs discovered during the process.

CONCEPTUAL THEMES

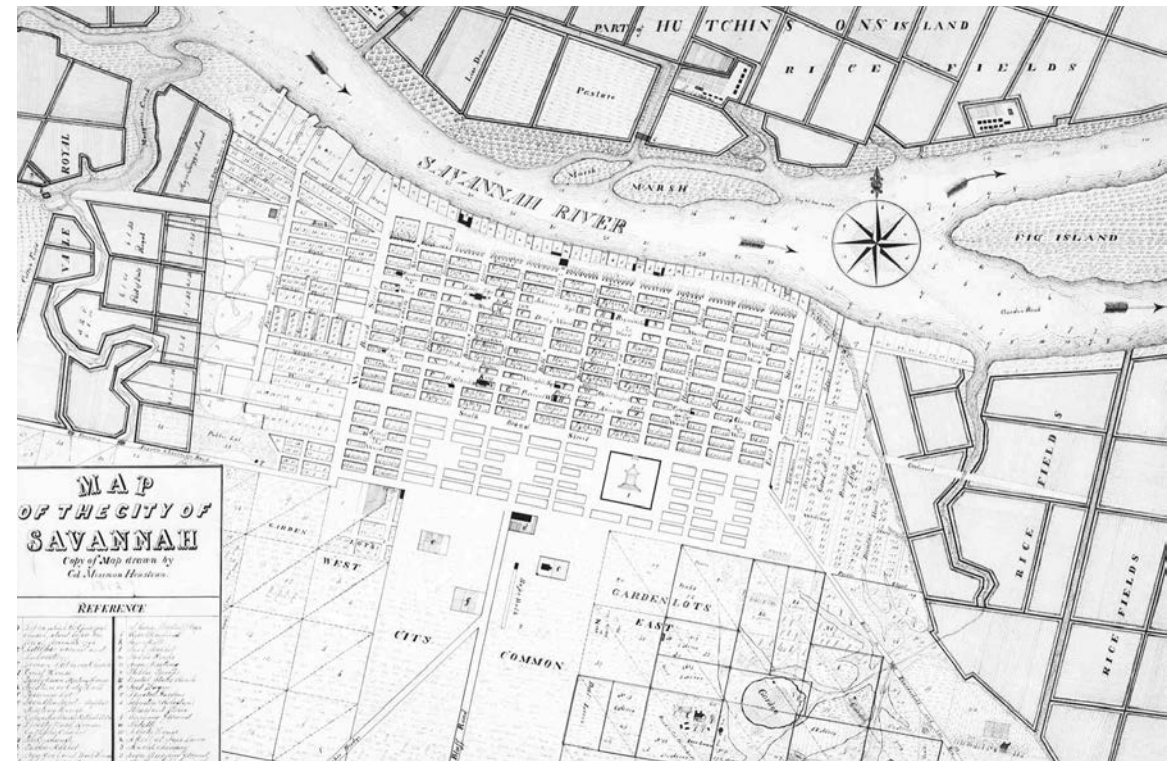
1. Coastal Savannah

Embraces Savannah's deep relationship with water, and focuses on connecting people to it.



2. Historic Savannah

Restores the street's historic quality and blur the line between past, present, and future.



FINAL CONCEPT



River Street

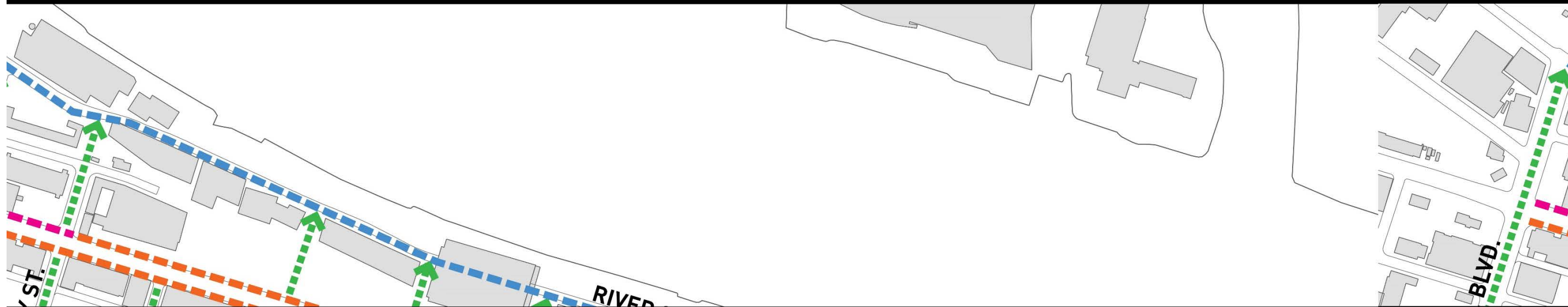
Bay Street

Broughton Street

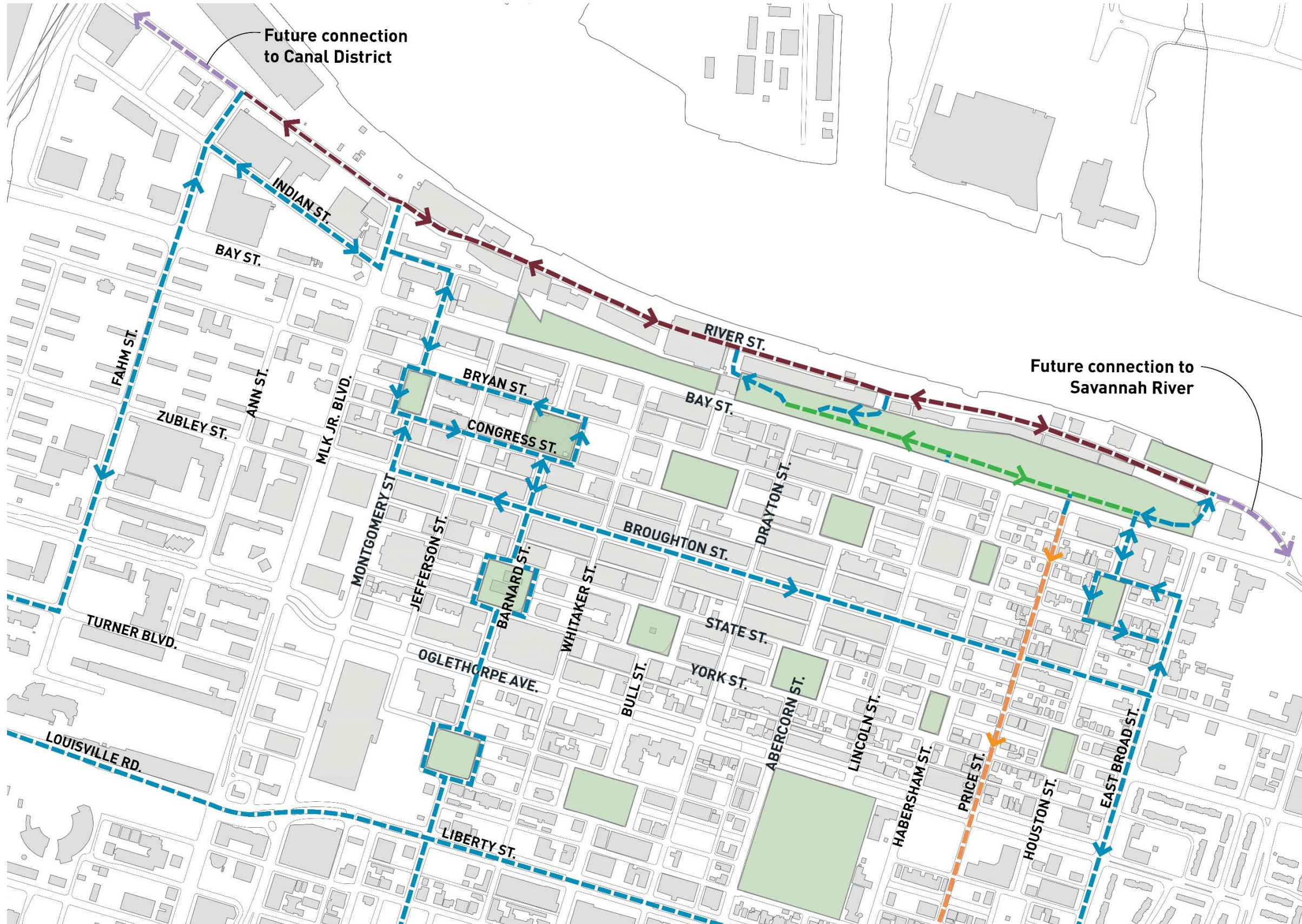
PEDESTRIAN CONNECTIVITY PLAN

LEGEND






- Connections to River
- New Walkway
- Enhanced Walkway
- Widened and Enhanced Walkway



BIKE CONNECTIVITY PLAN



LEGEND

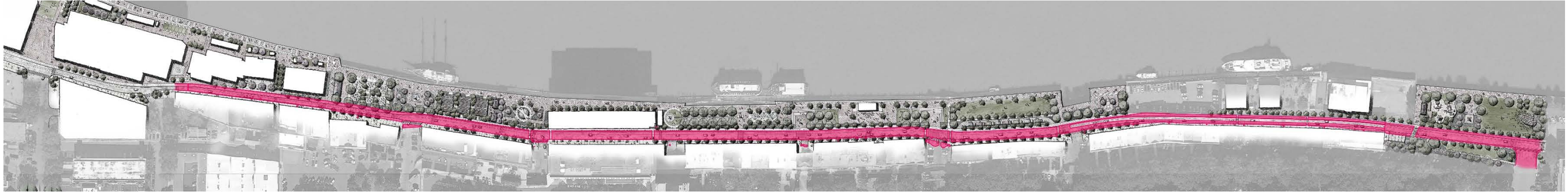
-  Existing Dedicated Bike Lane
-  Proposed Dedicated Bike Lane
-  Proposed Shared Use Bike Lane
-  Proposed Multi Use Path
-  Existing Park / Open Space

HISTORIC FEATURES

Historical features 50 years or older...

- Granite Curbs
- Slate Curbs
- Access Plates
- Plaques
- Light wells
- Brick Sidewalks
- Belgian Block
- Light Posts
- Misc.

River Street



Bay Street



Broughton Street



Historic Elements within the Public Right-of-Way

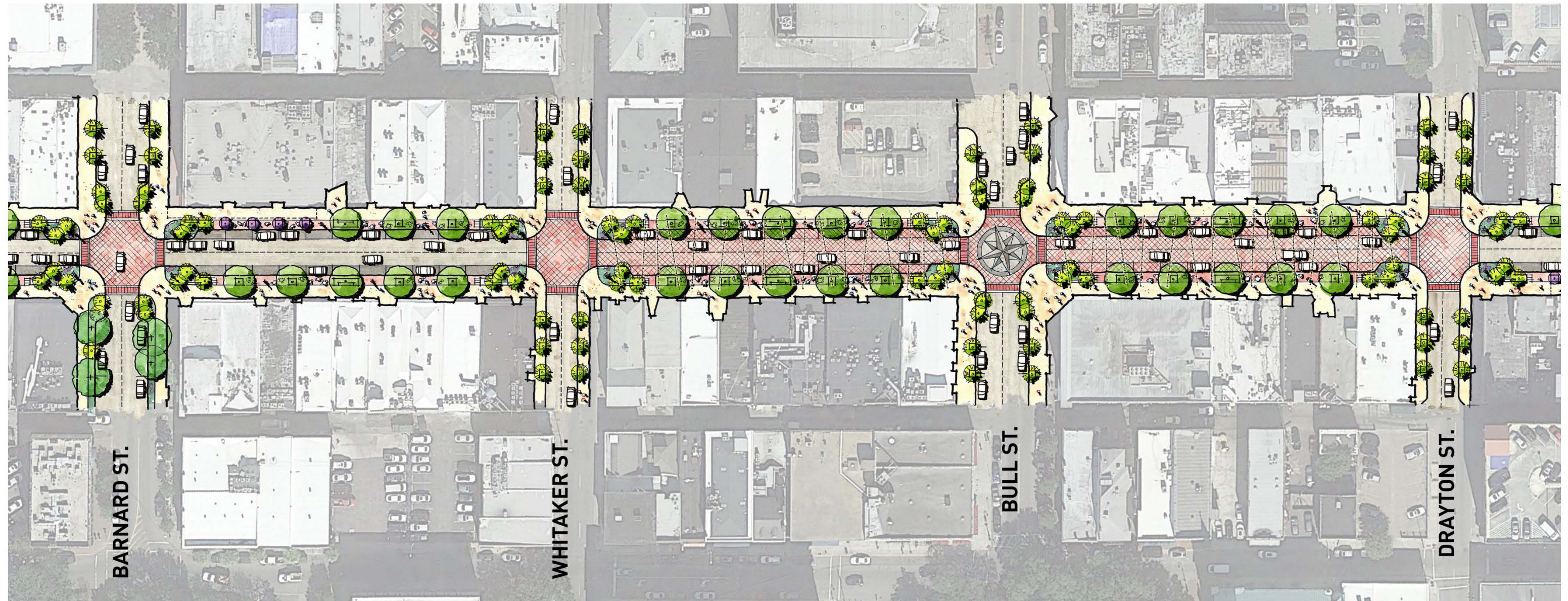
Historic Elements Adjacent to the Public Right-of-Way

BROUGHTON STREET

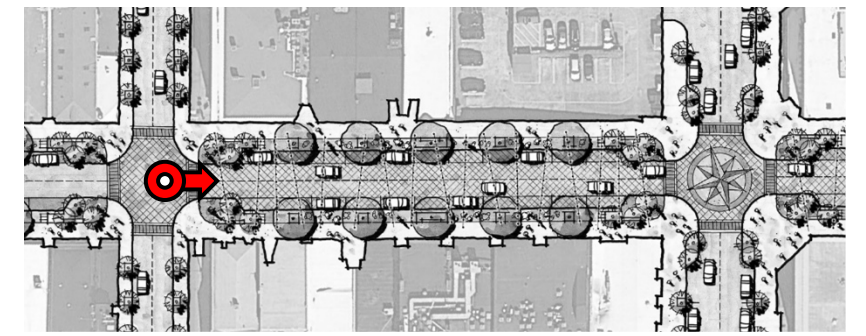


BROUGHTON STREET

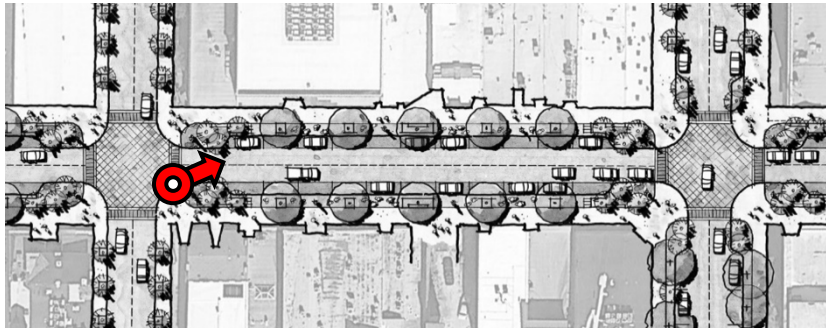
Illustrative Plan



BROUGHTON STREET



BROUGHTON STREET



BAY STREET

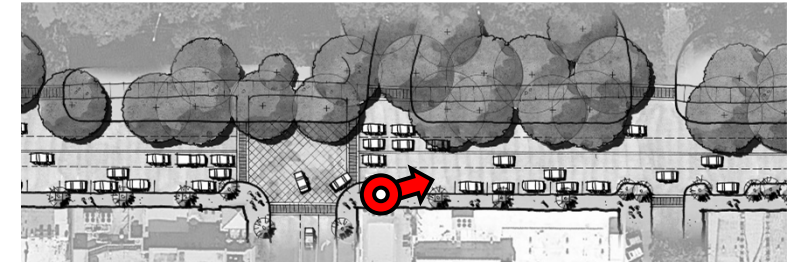


BAY STREET

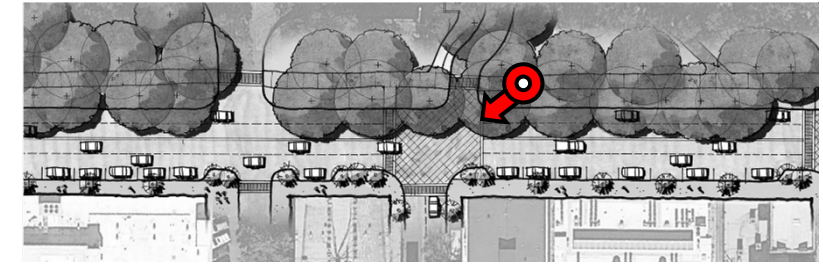
Illustrative Plan



BAY STREET



BAY STREET



BAY STREET – LONG TERM APPROACH

What is a Road Diet?

Removing vehicle lanes from an existing roadway to reallocate extra space for other uses such as **parking, widened sidewalks, bicycle lanes, transit, turn lanes, medians, and pedestrian refuge islands.**

Benefits of the Bay Street Road Diet:

- Enhanced pedestrian experience by creating café zones, providing buffered sidewalks, and preserving historic oak trees
- Dedicated turn lanes to all south bound connections off of Bay Street
- Dedicated bike lanes safely buffered from roadways
- Planted medians to provide refuge for pedestrians at crosswalks
- Overall reduction of speed



Road Configuration Before Road Diet



Road Configuration After Road Diet

BAY STREET ROAD DIET

Bay Street is an important arterial roadway with traffic counts of **24,000-27,000 ADT** (Average Daily Traffic.) Currently, it is dominated by heavy vehicular traffic. In order for Bay Street to become a true **complete street**, a 'road diet' is necessary. The Federal Highway's recommendation is **against** road diets for streets with ADT counts **above 20,000**.

How can we successfully implement a road diet on Bay Street?...

- A viable route alternative for trucks traveling to and from neighboring manufacturing industries
- A comprehensive traffic analysis on Bay Street to better understand specific needs and traffic counts
- Current signalization needs to be maintained as it benefits pedestrians
- Street improvements to adjacent road networks within the downtown grid system

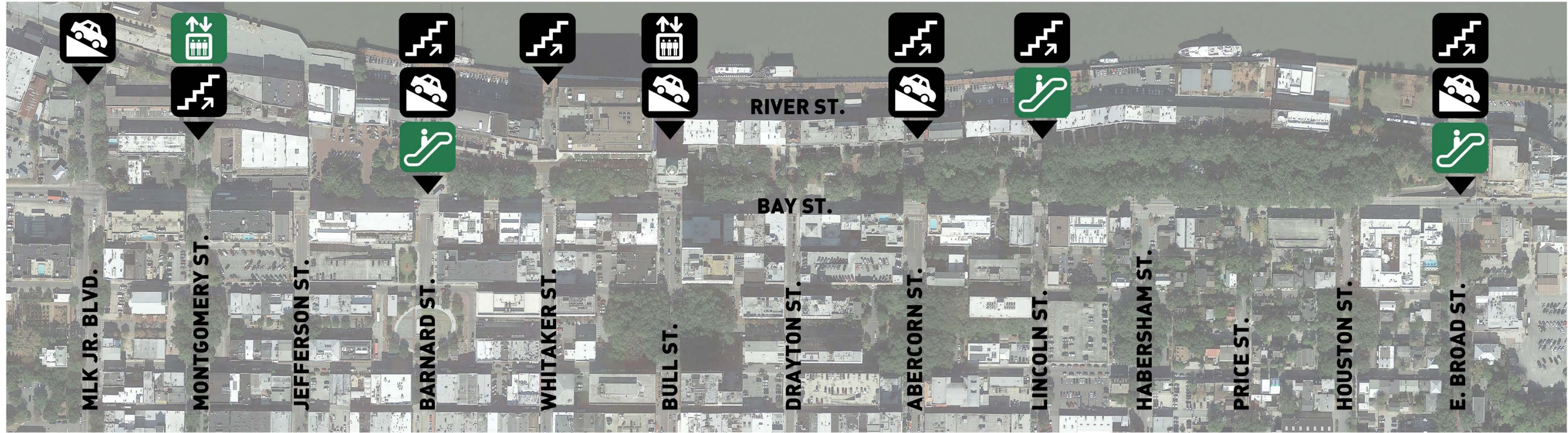


RIVER STREET



RIVER STREET

River Street Access Diagram



-  Existing Ramp
-  Existing Elevator
-  Existing Stair
-  Proposed Covered Escalator
-  Future Elevator



RIVER STREET

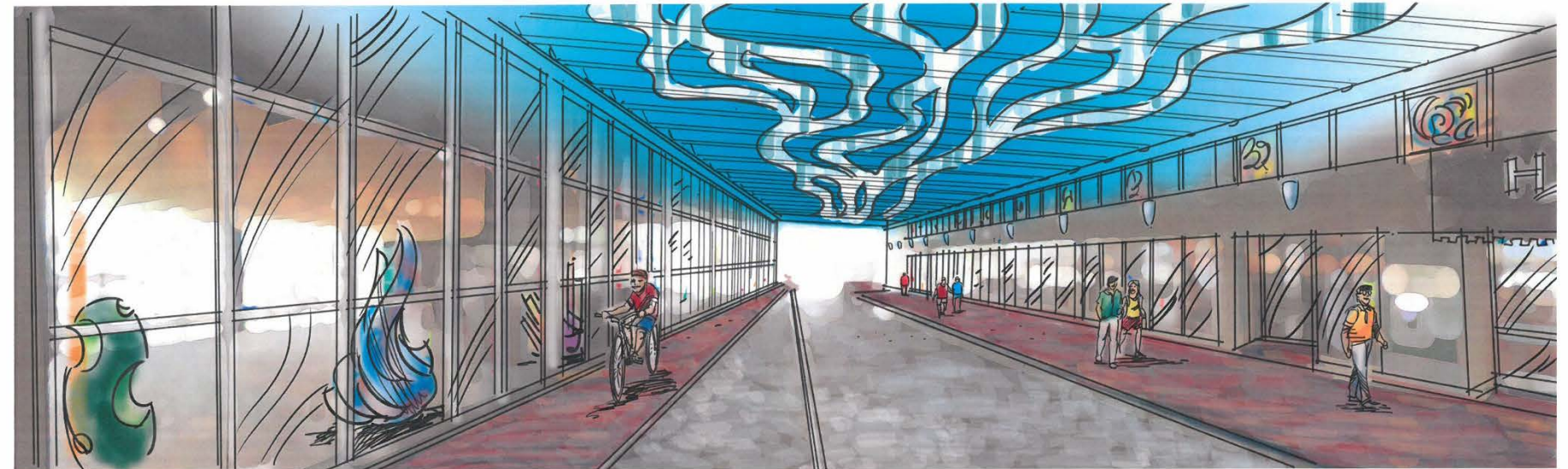
Illustrative Plan



RIVER STREET

Hyatt Regency Savannah

STAINLESS STEEL WITH LED BACKLIGHTING REPRESENTS SAVANNAH RIVER + DELTA



RIVER OF LIGHT

LIGHT REFLECTS OFF OF GLASS ADDING TO THE EFFECT

PROGRAMMABLE LED LIGHT TAPE IN EXISTING RECESSED
- SOLID COLOR OR MULTIPLE COLORS SLOWLY MOVING FROM ONE END TO THE OTHER



Existing Condition



OPP. FOR ROTATING ART PIGGIES IN BALLROOM

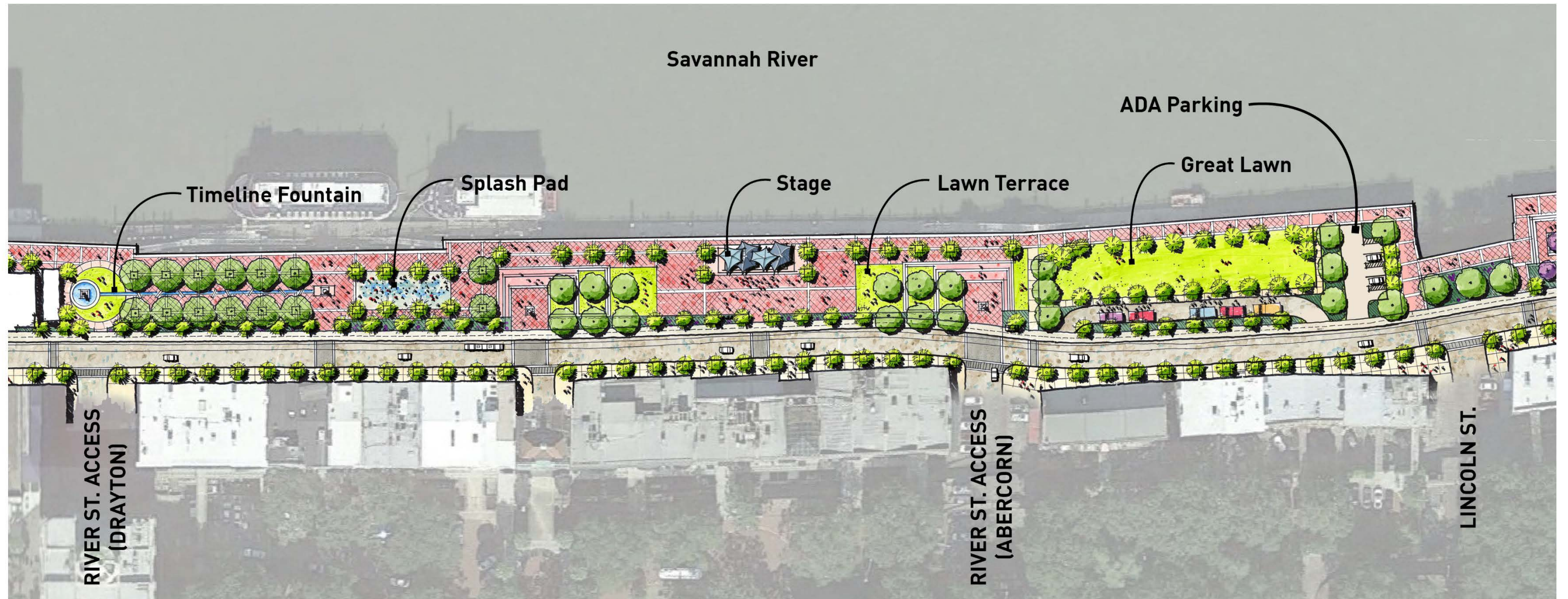
NEW BRICK PAVING BOTH SIDES

OPPORTUNITIES FOR ART IN EXISTING GLASS PANEES ABOVE -
- REPLACE GLAZES WITH MODERN SCONCES

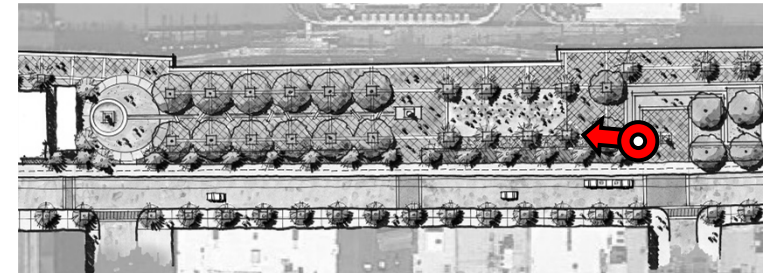
KALEIDOSCOPE

RIVER STREET

Illustrative Plan



RIVER STREET

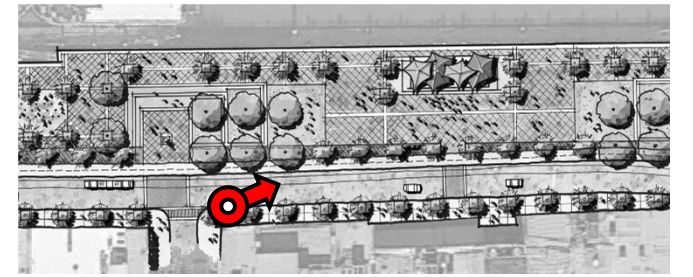


RIVER STREET

Illustrative Plan



RIVER STREET



NEXT STEPS

Tentative Deadlines

- Construction plans begin: Underway
- Project bidding begins: 4th Quarter 2017
- Phase I Construction begins: End of the 1st Quarter 2018
[After St. Patrick's Day]

West Bay Street

- Public Meeting 1: Tuesday, August 22
- Public Meeting 2: Tuesday, October 10
- Public Meeting 3: Tuesday, December 19

Coastal Georgia Center
305 Fahm Street