



# ALCOHOLIC BEVERAGES ORDINANCE



Council Workshop

Thursday, September 27, 2018



# REQUEST

- August 16, 2018: Council directed City Manager and City Attorney to investigate, advise, and offer an opportunity to implement distance requirements between convenience stores licensed to sell alcohol
- The following revisions to the Alcoholic Beverages Ordinance are being considered:
  - Define a convenience store and include in the “Definitions” section of the ordinance;
  - Add alcoholic beverage license classification of Class K for convenience stores to sell malt beverages and wine; and
  - Include a distance requirement between convenience stores



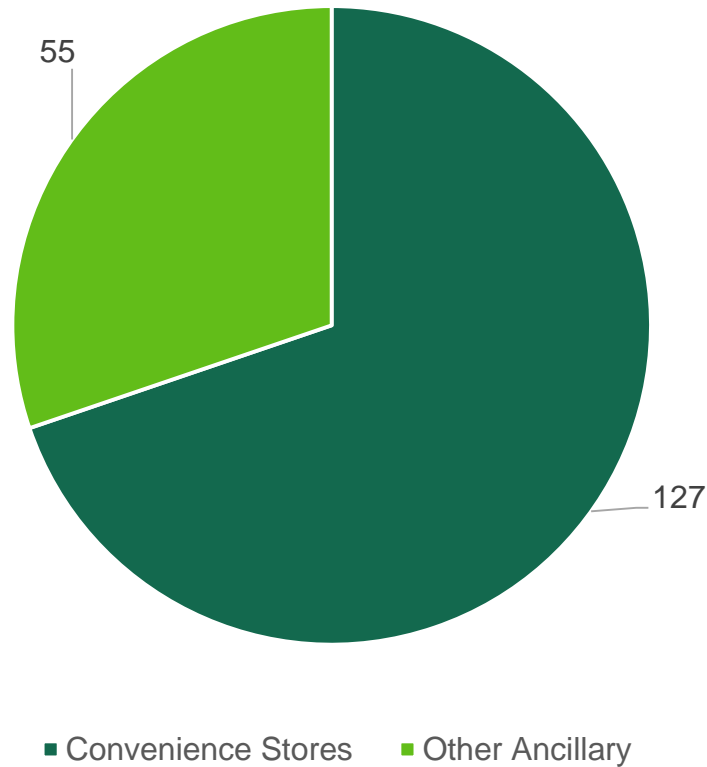
# CURRENT ORDINANCE

Sec. 6-1204. - Definitions; general provisions.

- Ancillary retail package store means a Class E license holder and refers to an establishment that:
  - Engages in the retail sale of malt beverages or wine in unbroken packages, not for consumption on the premises; and
  - Derives from such retail sale of malt beverages or wine in unbroken packages less than 25% of its total annual gross sales



# CURRENT CLASS E LICENSES: ANCILLARY RETAIL PACKAGE STORES



# PROPOSE NEW DEFINITION

- Sec. 6-1204. - Definitions; general provisions.
- Convenience Store:
  - Engages in the retail sale of malt beverages or wine in unbroken packages, not for consumption on the premises;
  - Derives from such retail sale of malt beverages or wine in unbroken packages less than 25% of its total annual gross sales;
  - May or may not have fuel/gas sales;
  - Is primarily engaged in retailing a limited line of goods that generally include milk, bread, soda, and snacks; and
  - May include on-site food preparation



# PROPOSE NEW LICENSE CLASS

License class	Applicant classification	Distilled spirits	Malt beverage	Wine
<b>A</b>	Licensed Alcohol Caterer	1 (A1 is incompatible with Class E, F and G uses)	2 (A2 is incompatible with Class E, F and G uses)	3 (A3 is incompatible with Class E, F and G uses)
<b>B</b>	Manufacturer (Distiller = B1) (Brewer = B2)	1	2	3
<b>C</b>	Retail Consumption Dealer (on-premises consumption)	1	2	3
<b>D</b>	Retail Package Store (off-premises consumption)	1 (C1 and D1 are incompatible uses)	2 (C2 and D2 are incompatible uses)	3
<b>E</b>	Ancillary Retail Package Store	X (ineligible use)	2	3
<b>F</b>	Wholesaler	1	2	3
<b>G</b>	Complimentary Service	X (ineligible use)	2	3
<b>H</b>	Samples	1 (B1 is only compatible use)	2	3
<b>I</b>	Underage License	—	—	—
<b>J</b>	Event Venues	1 (J1 is incompatible with all other uses)	2 (J2 is incompatible with all other uses)	3 (J3 is incompatible with all other uses)
<b>K</b>	<b>Convenience Store</b>	<b>X</b> <b>(ineligible use)</b>	<b>2</b>	<b>3</b>



# OTHER CONSIDERATIONS

- Distance between convenience stores
  - 500, 1000, 1500 feet
  - Property line to property line
- Location on street type
  - Arterial
  - Collector
  - Local
- Additional feedback?

