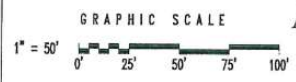
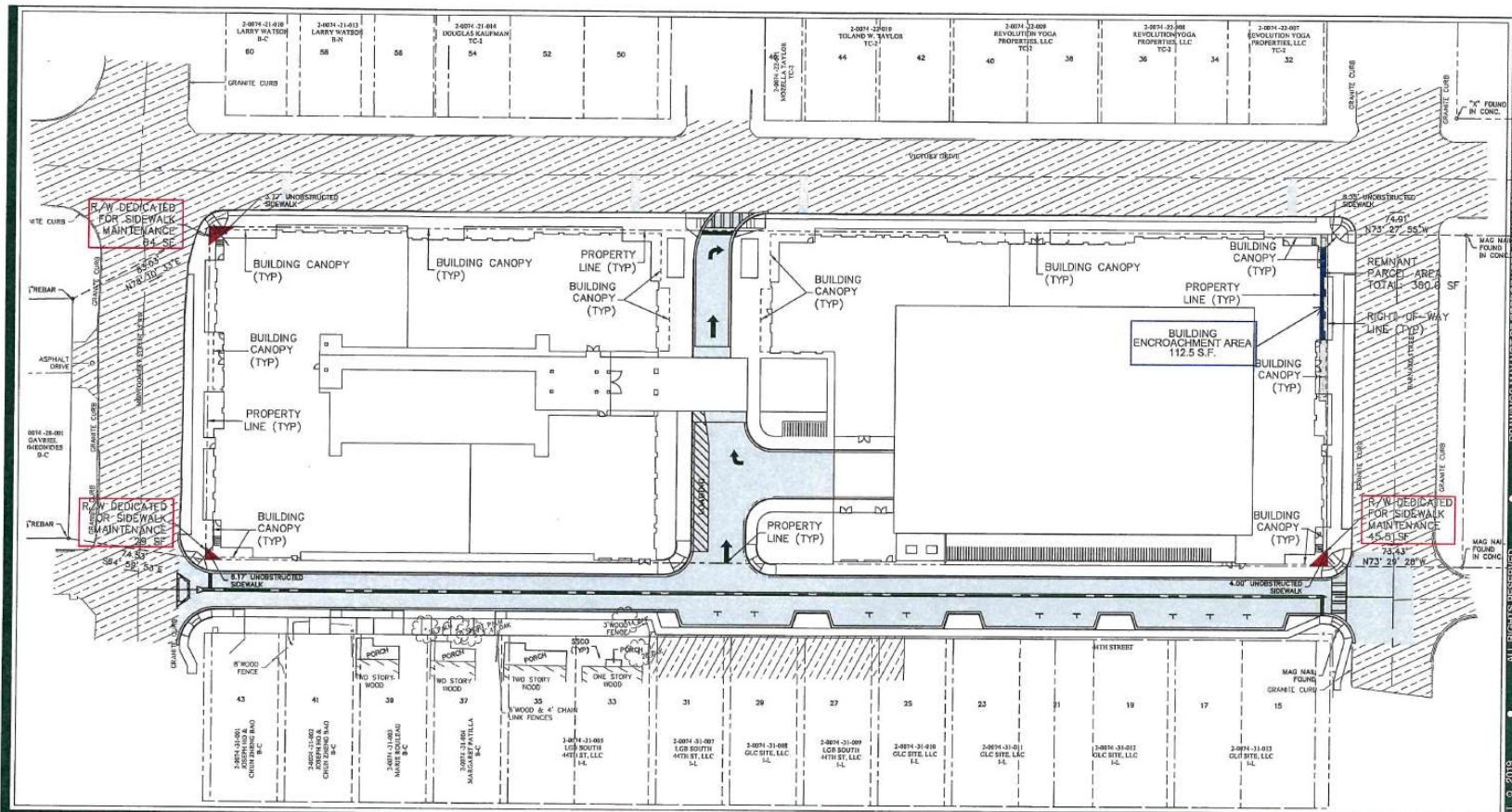


SCAD Victory Village II Development



□ - Property to City of Savannah (Total of 138.5 Square Feet)

□ - Property to SCAD (Total of 112.5 Square Feet)



ABOVE GROUND R.O.W. ENCROACHMENTS  
SCAD VICTORY VILLAGE II  
DATE: JULY 15, 2019

**HUSSEY GAY BELL**  
Established 1958  
329 COMMERCIAL DRIVE, SAVANNAH, GA 31406 / T:912.354.4526



**EXHIBIT**  
**A**  
SHEET: 1 OF 2

DRAWINGS SHALL NOT BE REPRODUCED OR USED FOR ANY OTHER PROJECT WITHOUT THE WRITTEN PERMISSION OF HUSSEY GAY BELL. ALL RIGHTS RESERVED. © 2019. E:\BatesForum\118030001 SCAD Victory Village 2 SDP (BATESFORUM)\Cadd Files\Exhibits\Right-of-Way Encroachment\2019-07-15\_Encroachment Exhibit.dwg