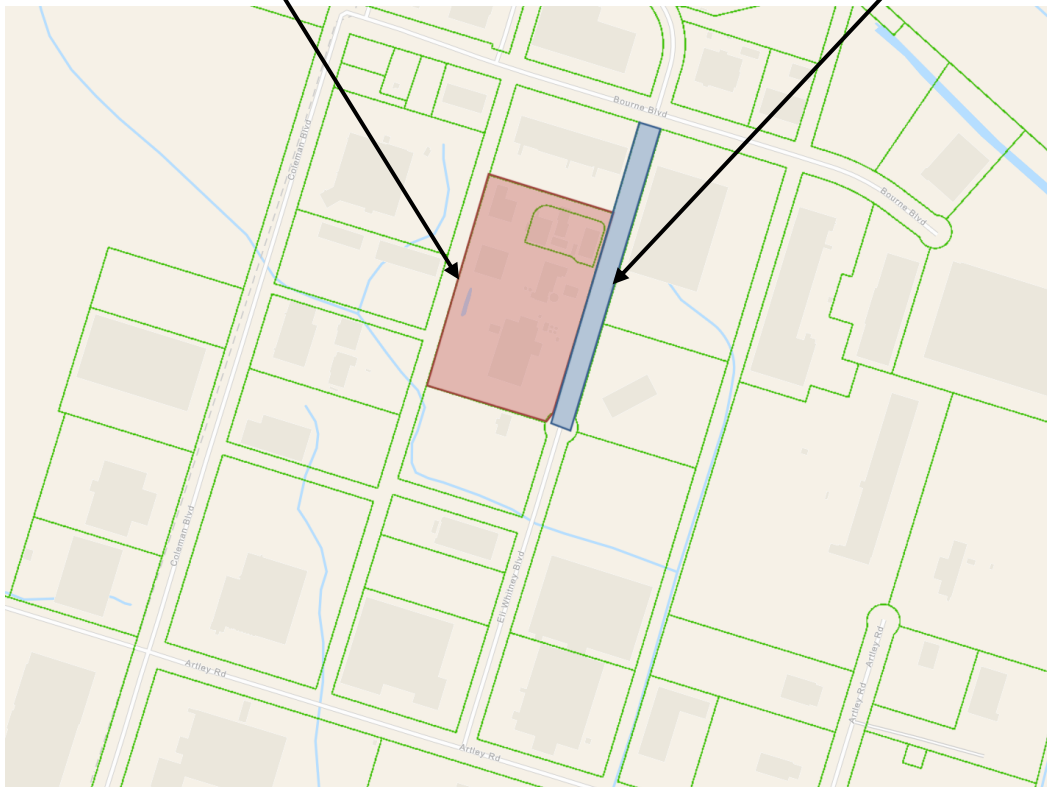
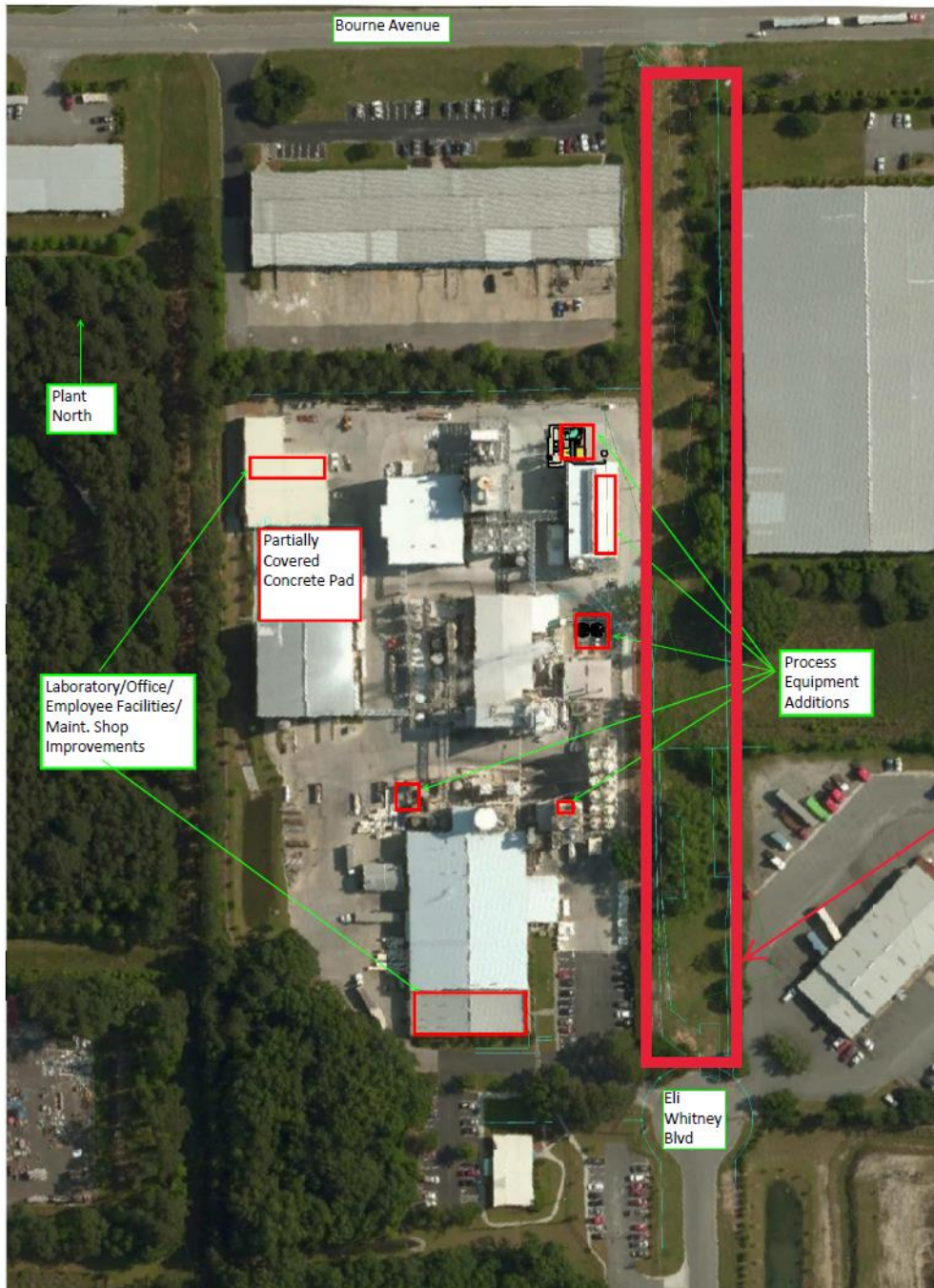


Johnson Matthey Process Technologies, Inc. Expansion Site

Requested Temporary Easement





Johnson Matthey A&D Plant
Expansion
P.I.N. (#2-0985-04-021&
#2-0985-04-022)
115 ELI WHITNEY BLVD.
SAVANNAH, GA 31408

Unopened R/W

JOHNSON MATTHEY
A&D PLANT EXPANSION
SITE PLAN
2024.11.15