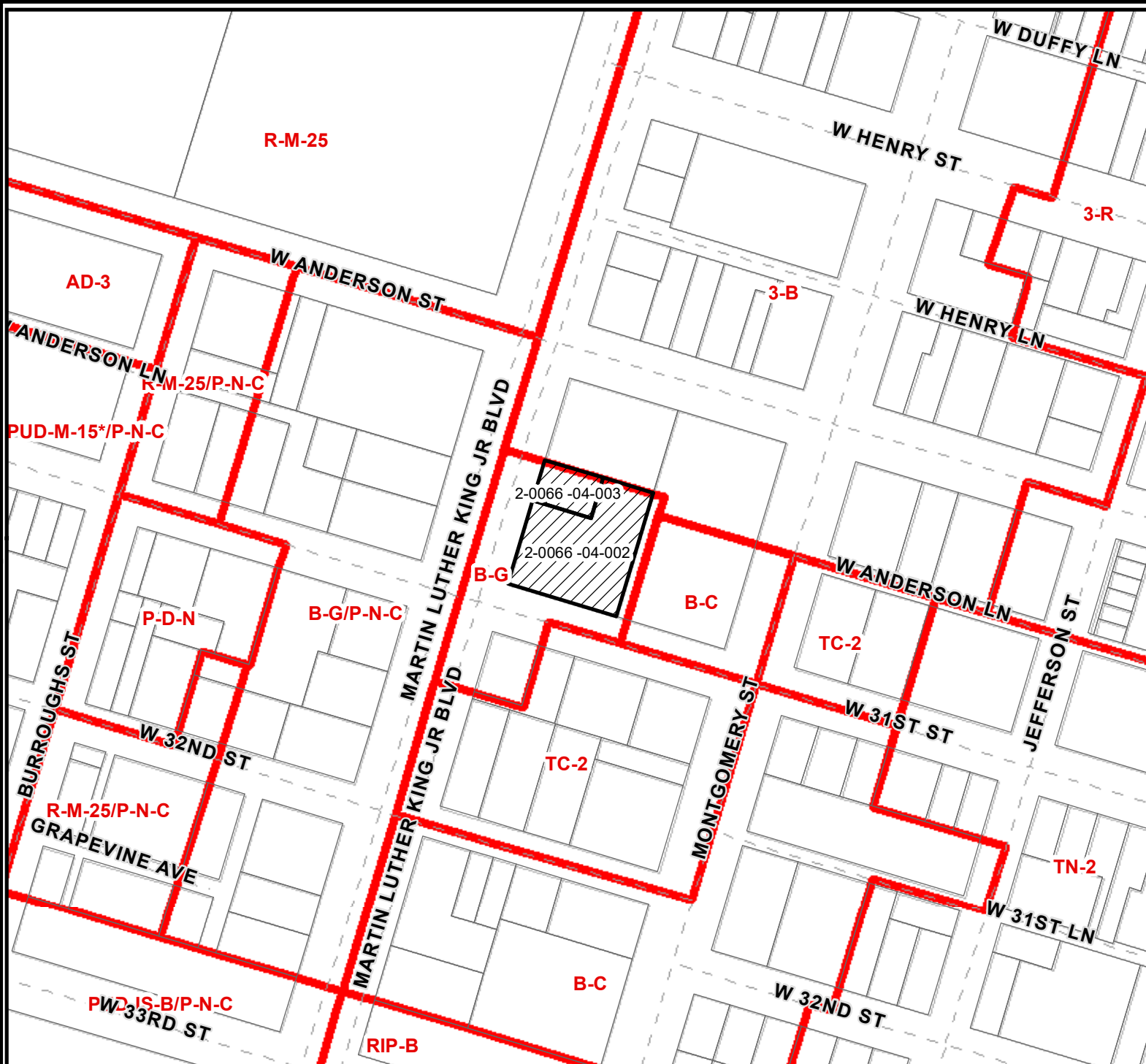


ZONING MAP



FILE # 18-006343-ZA
 Address: 1408, 1410 Martin Luther King Jr. Blvd. Savannah, Ga
 Aldermanic District: 2 Bill Durrance
 Commission District: John J. Holmes
 Neighborhood: Metropolitan
 PIN(s): See Map

Current property zoning(s)
 B-G
 Proposed property zoning:
 TC-2

THIS MAP IS A COMPILATION OF INFORMATION FROM VARIOUS SOURCES AND SCALES. IN MOST CASES THE INFORMATION HAS NOT BEEN FIELD VERIFIED. USE THIS MAP FOR GENERAL PLANNING PURPOSES ONLY.



1 inch = 150 feet

D

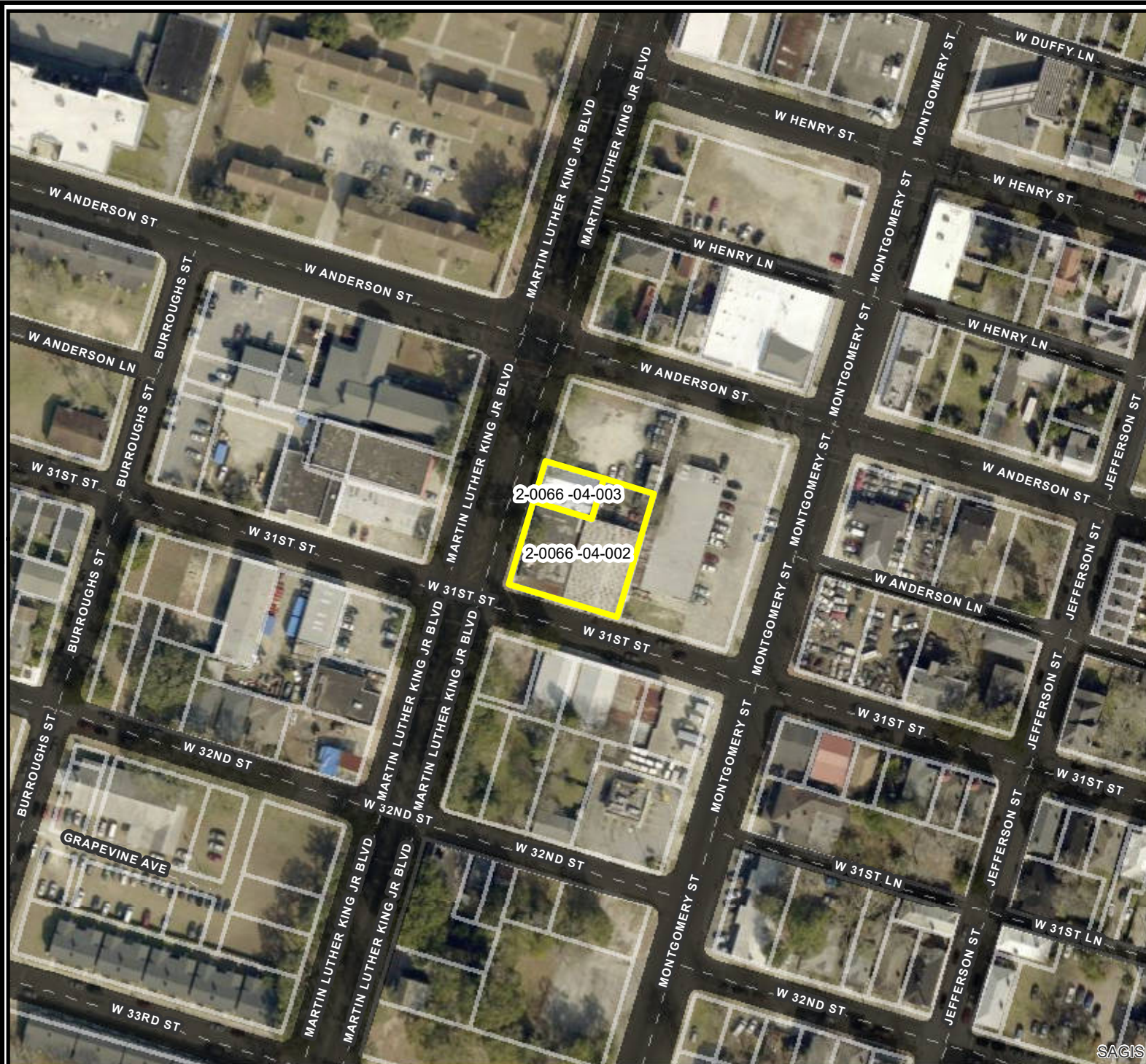


11/20/2018

CHATHAM COUNTY · SAVANNAH
METROPOLITAN PLANNING COMMISSION
 110 E. STATE ST. SAVANNAH, GA 31412-8246 PHONE 912-651-1440

AERIAL MAP

FILE # 18-006343-ZA
Address: 1408, 1410 Martin Luther King Jr. Blvd. Savannah, Ga
Aldermanic District: 2 Bill Durrance
Commission District: John J. Holmes
Neighborhood: Metropolitan
PIN(s): See Map



THIS MAP IS A COMPILATION OF INFORMATION FROM VARIOUS SOURCES AND SCALES. IN MOST CASES THE INFORMATION HAS NOT BEEN FIELD VERIFIED. USE THIS MAP FOR GENERAL PLANNING PURPOSES ONLY.



1 inch = 150 feet

SAGIS



11/20/2018

CHATHAM COUNTY · SAVANNAH
METROPOLITAN PLANNING COMMISSION
110 E. STATE ST. SAVANNAH, GA 31412-8246 PHONE 912-651-1440