

Arena Guaranteed Maximum Price Overview

August 13, 2020 City Council Workshop



1974 - 2022



Opening Early 2022

Agenda

- A. Project Overview**
- B. Project Delivery**
- C. Project Scope**
- D. Project Schedule**
- E. Construction Sequence**
- F. Project Budget**
- G. L/DBE Participation**





Guaranteed Maximum Price Timeline

Sept. 12, 2019: First early-release package approved (\$23.5 million)

Sept. 13, 2019: Arena Groundbreaking

February 18, 2020: Final construction documents complete

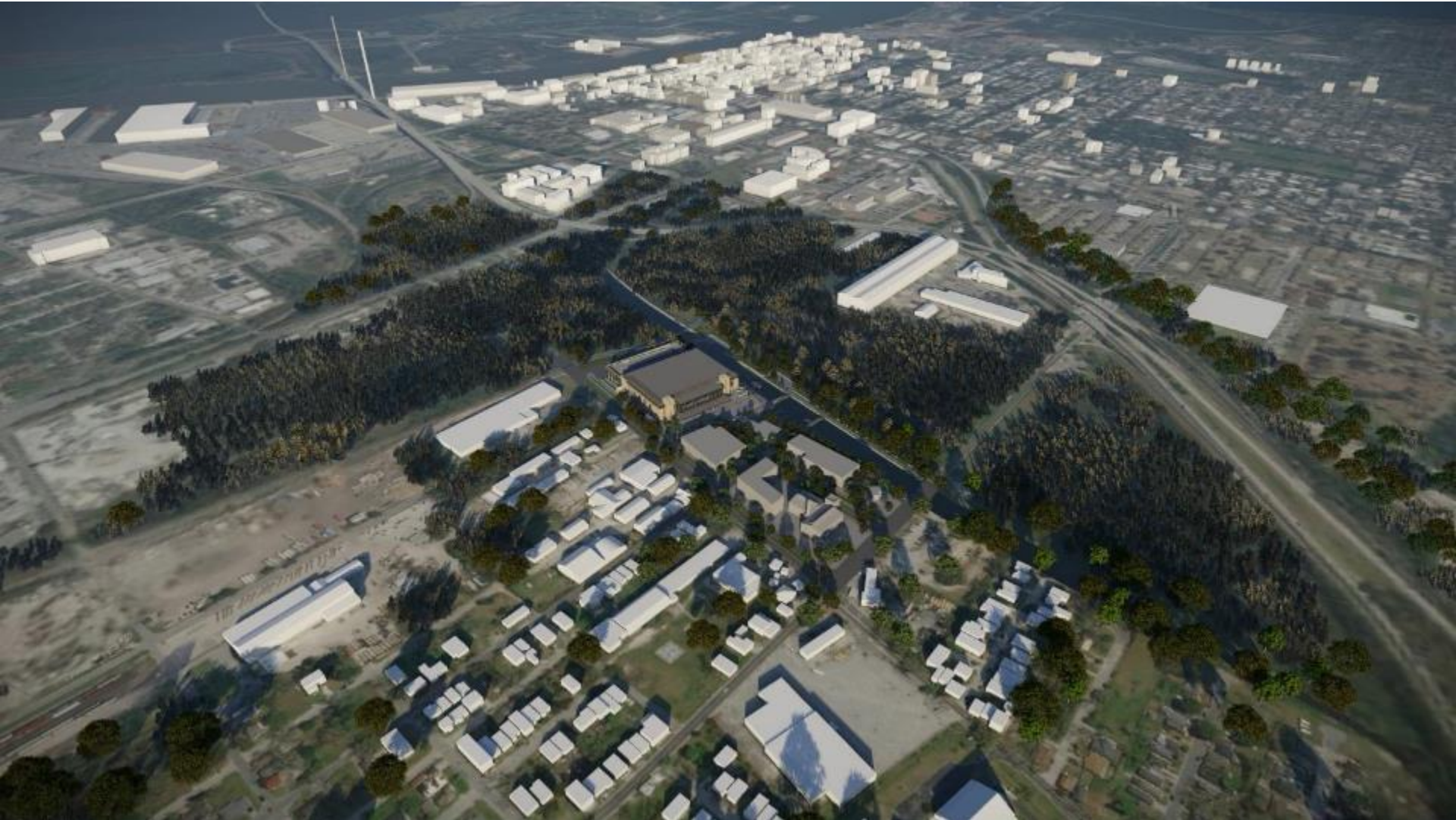
May 29, 2020: Second early-release package approved (\$22 million)

August 13, 2020: Requested approval of GMP (\$147.6 million)

Dec. 31, 2021: Substantial construction complete

Q1 2022: Arena holds first event

Savannah Arena



Savannah Arena



Savannah Arena



Perkins&Will



Savannah Arena



Perkins & Will



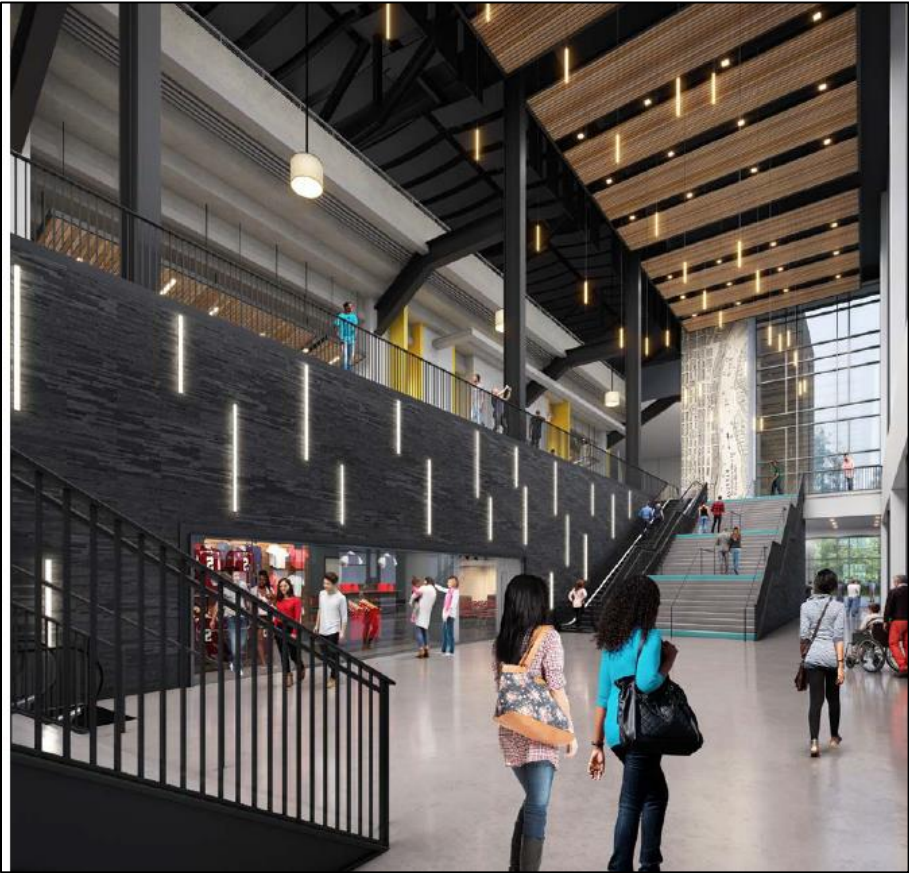
Savannah Arena



Perkins & Will



Savannah Arena



Lobby/Event Level



Lobby/Concourse



Savannah Arena



Concourse Balcony



Savannah Arena



East Club

Savannah Arena



North Club Level



Savannah Arena

Arena Interior



Performance Bowl



Overlook Level

Savannah Arena



Project Team



Project Delivery

Construction Manager at Risk (“CMAR”) – AECOM Hunt

Owner Benefits:

- DBE: Owner/CM collaboration for DBE outreach and procurement
- Cost: Early cost assurance
- Design: Optimized design decisions
- Schedule: Fastest project delivery
- Risk: Minimizes risk
- Control: Maximized transparency

Guaranteed Maximum Price (“GMP”)

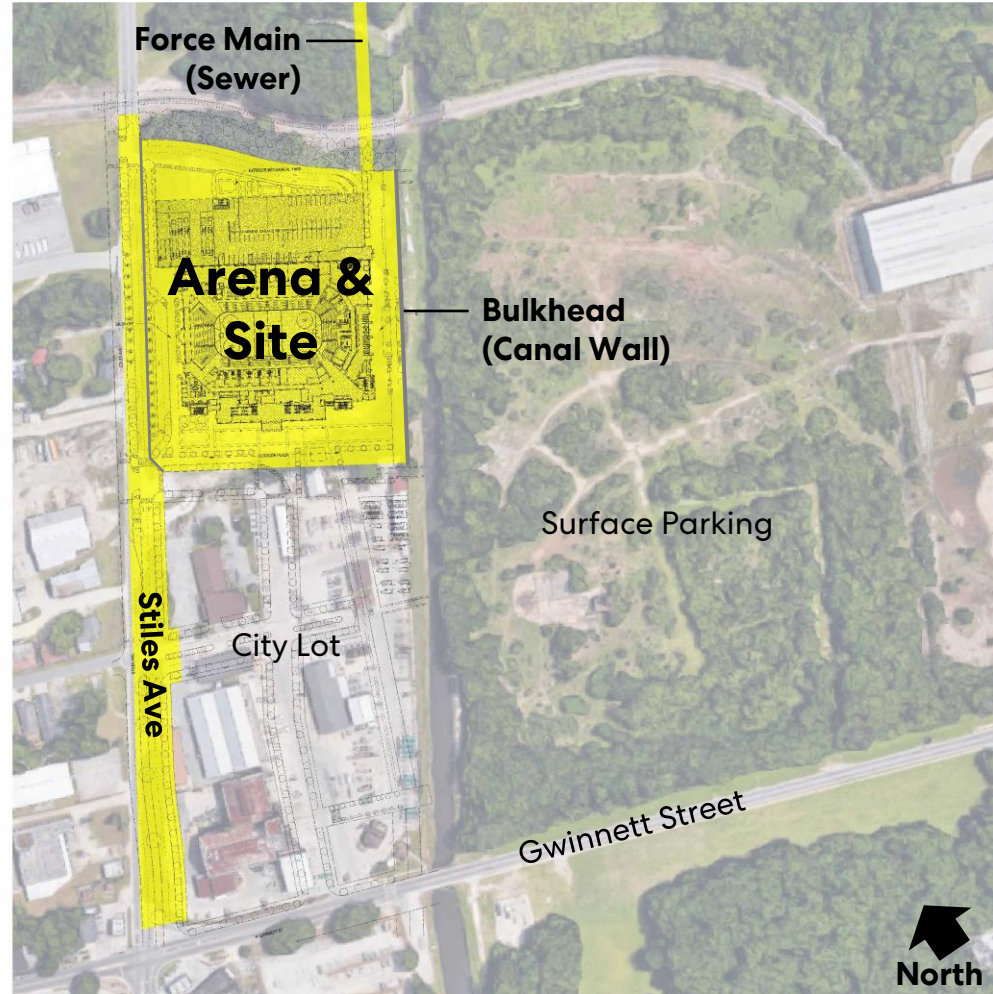
- Guarantees final cost of construction for current design
- Includes contingencies and allowances for unforeseen/unknown conditions

Project Scope

- **Arena & Site**
- **Stiles Ave Widening**
- **Force Main**
- **Bulkhead (Canal Wall)**

Excluded Scope:

- Attached Parking Garage
- Stiles from RR to Louisville Rd.
- Surface Parking
- City Lot
- Other Canal District Projects



Savannah Arena



Construction Sequence

2020											2021													
DEC	JAN	FEB	MAR	APR	MAY	JUN	JUL	AUG	SEP	OCT	NOV	DEC	JAN	FEB	MAR	APR	MAY	JUN	JUL	AUG	SEP	OCT	NOV	DEC

Savannah Arena

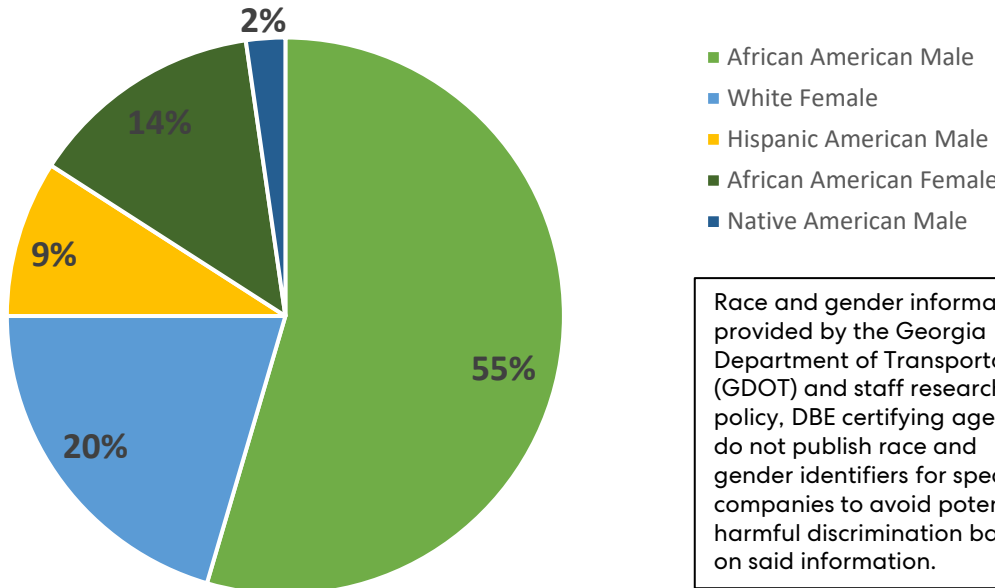


Local / Disadvantaged Business Enterprise Participation

Subcontractor L/DBE Participation		
Potential Overall DBE Participation	Potential LDBE Participation	Local Savannah Participation
26.10%	12.90%	23.40%
\$32,859,635	\$16,228,148	\$29,496,367

Additional DBE Participation	
JLL	30%
Perkins & Will	22%
OVG	75%
AECOM Hunt	25%

Arena L/DBE Subcontractor Race/Gender Distribution



Race and gender information provided by the Georgia Department of Transportation (GDOT) and staff research. As policy, DBE certifying agencies do not publish race and gender identifiers for specific companies to avoid potentially harmful discrimination based on said information.



Thank You!