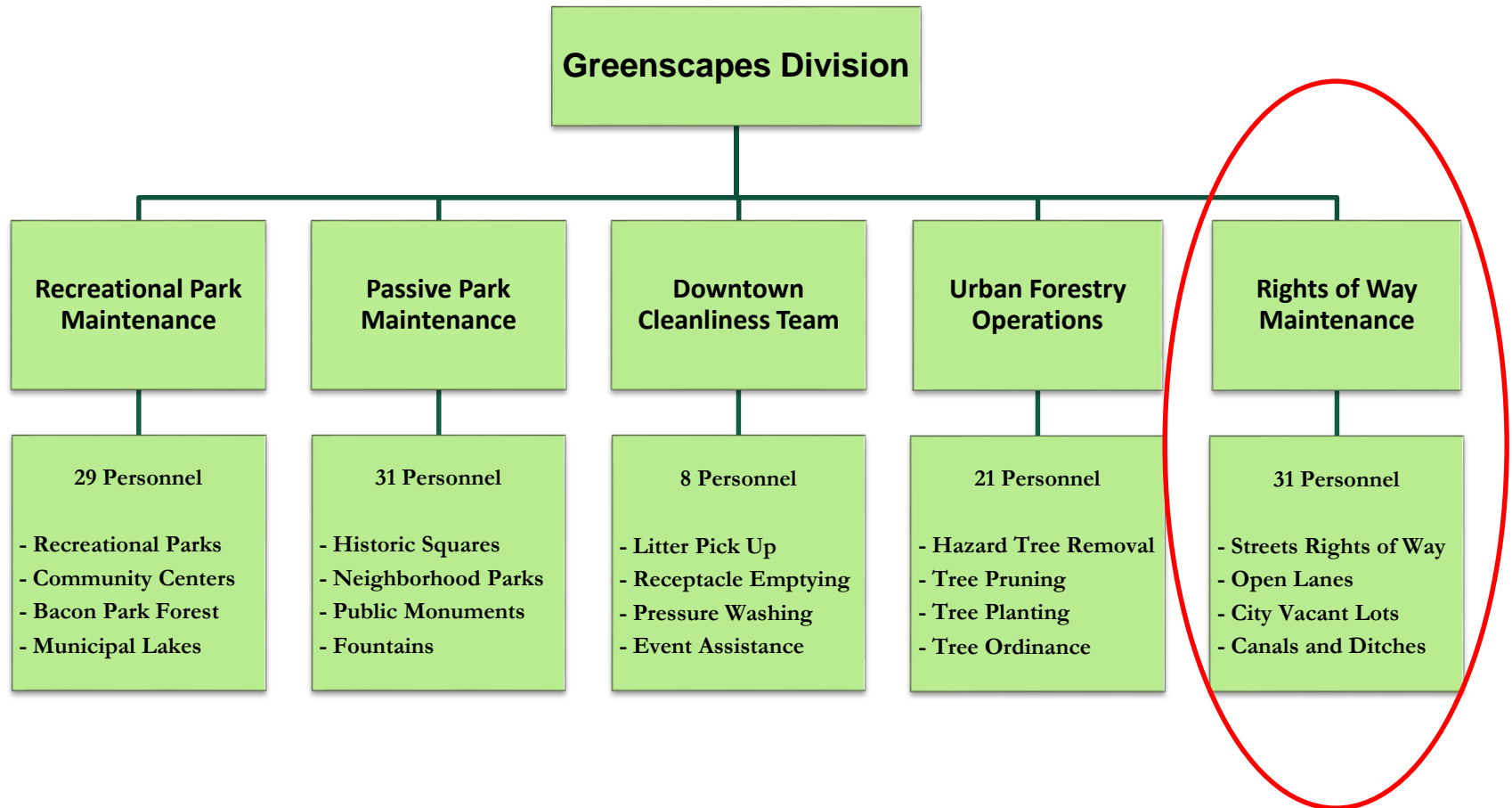




# Greenscapes Division

## *2018 Update*





# Rights of Way Maintenance Program

- **Areas of Responsibilities**
- **Zones and Maintenance Cycles**
- **Aligning Expectations**

- 410 miles of streets right of way
- 125 miles of canals and ditches



# Rights of Way Maintenance Program

- **Areas of Responsibilities**
- Zones and Maintenance Cycles
- Aligning Expectations



# Areas of Responsibilities

## Problems of the Past

- Multiple Departments managing adjacent areas with different cycles and different schedules
- Nothing ever looked completed



# Areas of Responsibilities

## Past Problems

**Streets  
Maintenance**

**Stormwater**



**Park and Tree**



# Areas of Responsibilities

## Future Solutions

### Right of Way Maintenance Program

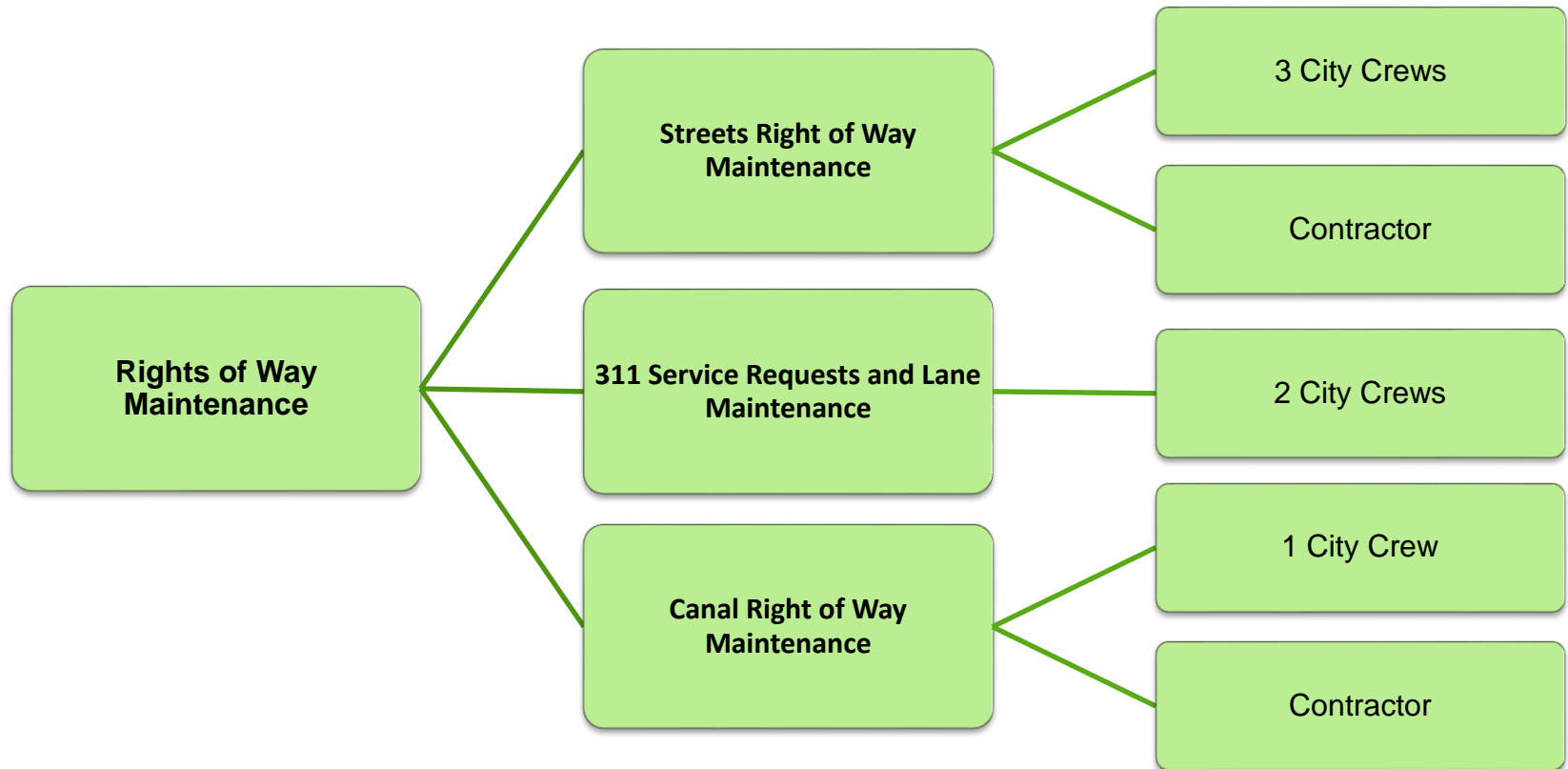
Right of  
Way  
Maintenance  
Program



Right of  
Way  
Maintenance  
Program



# Areas of Responsibilities



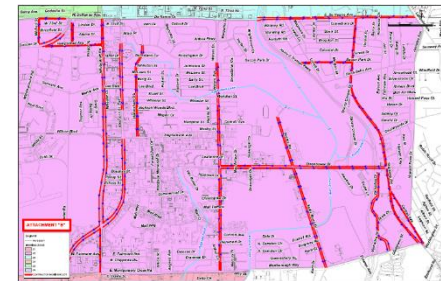
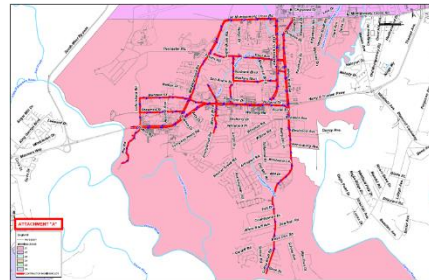
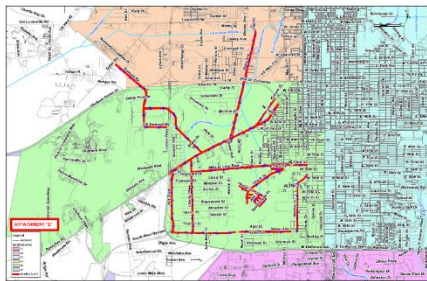
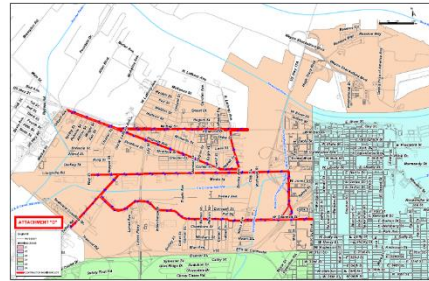
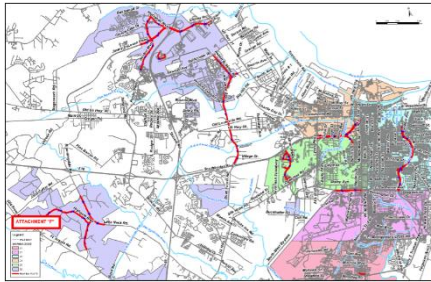


# Rights of Way Maintenance Program

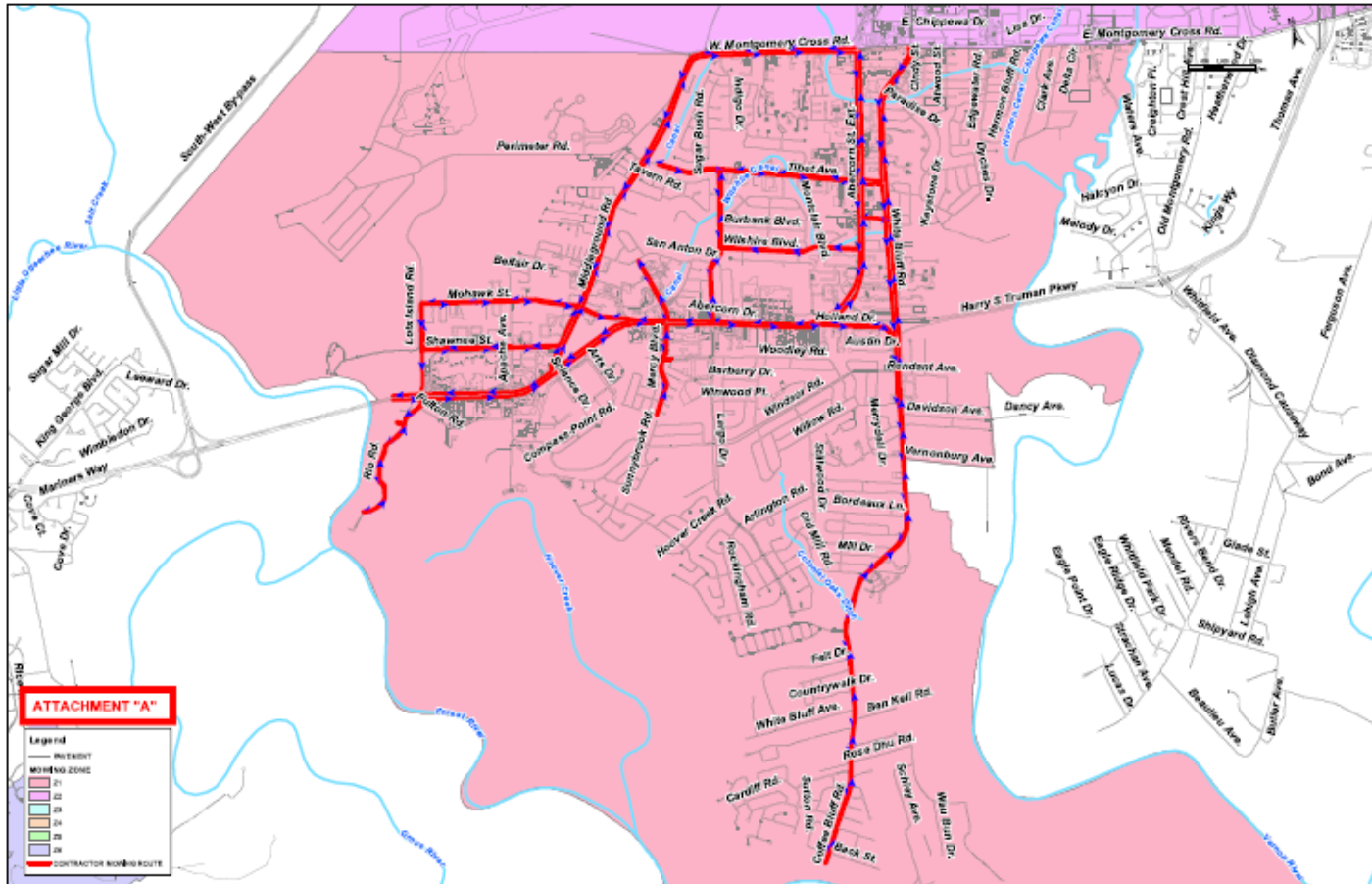
- Areas of Responsibilities
- **Zones and Maintenance Cycles**
- Aligning Expectations



# Zones and Maintenance Cycles



# Zones and Maintenance Cycles



# Zones and Maintenance Cycles

## City Standards for Rights of Way Maintenance

- 4 Week Mowing Cycle
  - Street & Lane Rights Of Way
  - City Owned Vacant Lots
  - Grass Height Not To Exceed 10”
- 4 Month Mowing Cycle
  - Ditches & Canal Slopes
  - Grass Height - Residential Areas Not To Exceed 18-24”
  - Grass Height - Non-Residential Areas Not To Exceed 24-30”



# Zones and Maintenance Cycles

## City Standards for Rights of Way Maintenance



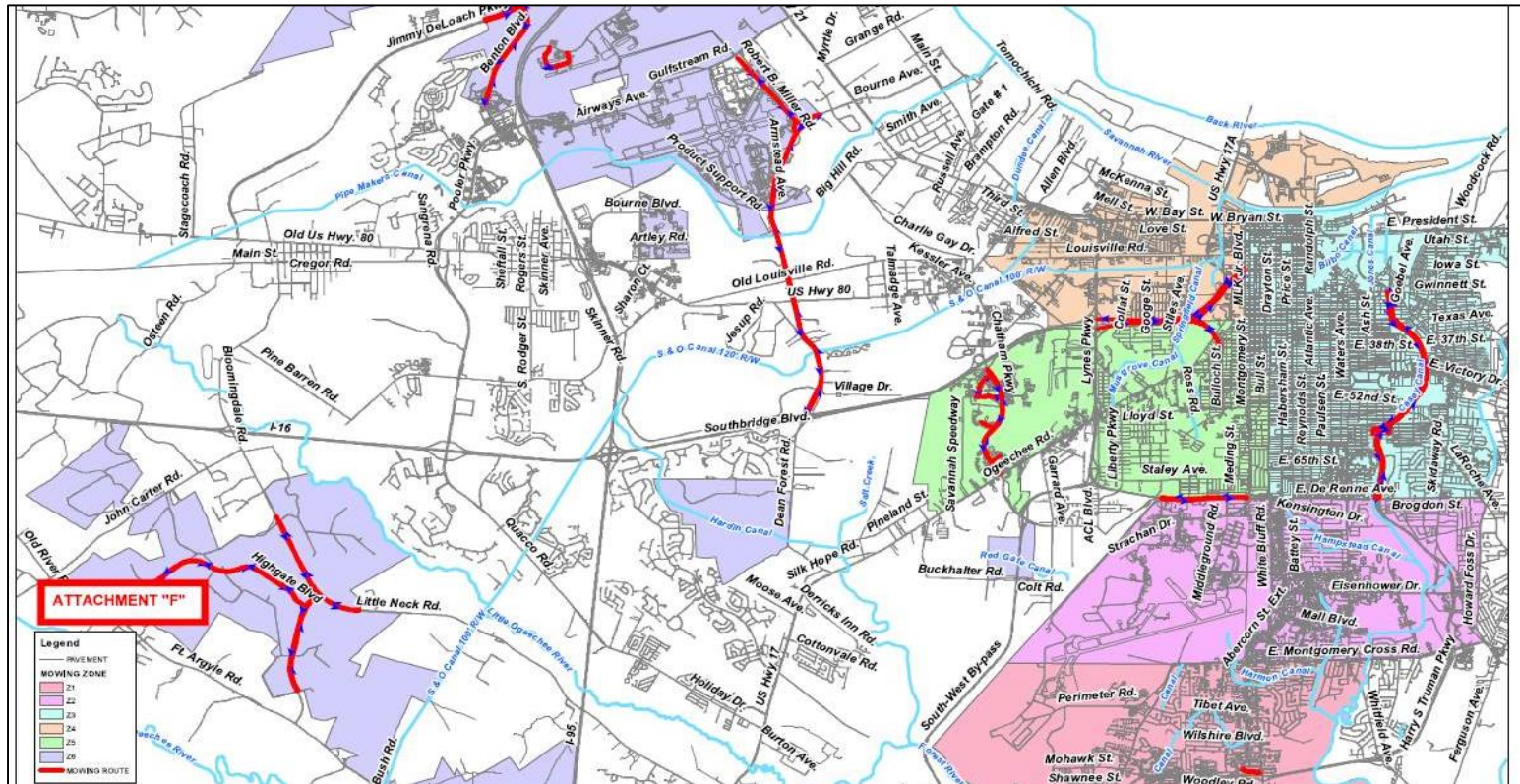
### Strategic Goal 3.2 – Maintenance Standards for Grass Heights

<u>Location</u>	<u>Frequency</u>	<u>Height</u>
Street Rights of Way	Every 4 Weeks	6-8"
Lane Rights of Way	Every 4 Weeks	6-8"
Ditch – Residential	Every 4 Months	<18"
Ditch – Non-Residential	Every 4 Months	<24"
Canal – Residential	Every 4 Months	<24"
Canal – Non-Residential	Every 4 Months	<30"





# Vacant Property Mowing Schedule



Zone	General Boundaries	Cutting Dates
1	South of Montgomery Cross Road	Week 2
2	Between DeRenne and Montgomery Cross Road	Week 2
3	North of DeRenne, west boundary being Bull Street up to Victory and then Montgomery Street north to the Savannah River	Week 3
4	West 37 <sup>th</sup> Street north to the River, east boundary being Martin Luther King Jr. Blvd	Week 3
5	Between DeRenne and West 37 <sup>th</sup> Street/Ogeechee Road, east boundary being Bull Street up to Victory and then Montgomery Street south of West 37 <sup>th</sup>	Week 3
6	Areas to the West such as Highlands, Little Neck, Highgate, etc	Week 3



# Rights of Way Maintenance Program

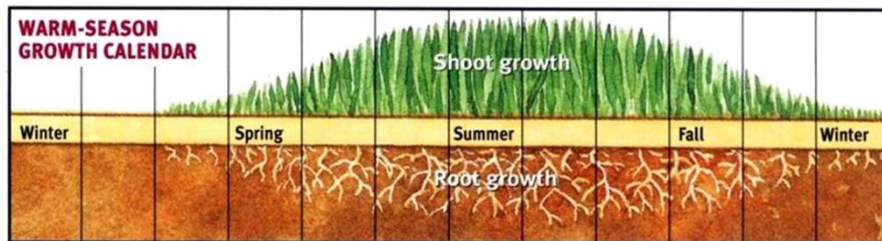
- Areas of Responsibilities
- Zones and Maintenance Cycles
- **Aligning Expectations**



# Aligning Expectations

## Understanding Grass Growth

- Growing Season – April to October
- Monthly Growth Can Range 2” - 6”
- Irrigated Areas Grow Faster
- Bahia Grass Seed Heads





# Aligning Expectations

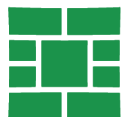
## What We Will Provide

- Mow street rights of ways on a 3-week cycle
- Mow open lanes on a 4 week cycle
- Mow canal/ditch slopes on a 4-month cycle
- Mow vacant City-owned property on a 4-week cycle



## What This May Look Like

- Grass may reach 8” tall, seed heads taller
- Tractor monthly, hand crews quarterly
- Grass on slopes may be 30” tall but top/access will be less
- Grass may reach 10” tall, seed heads taller



# Aligning Expectations

## Results to Expect:

- Areas Completed Before Moving On
- Consistent Right of Way Standards
- Dependable Schedules
- Achievable Cycles





“If It Is Green And Grows We Probably Cut It”

